

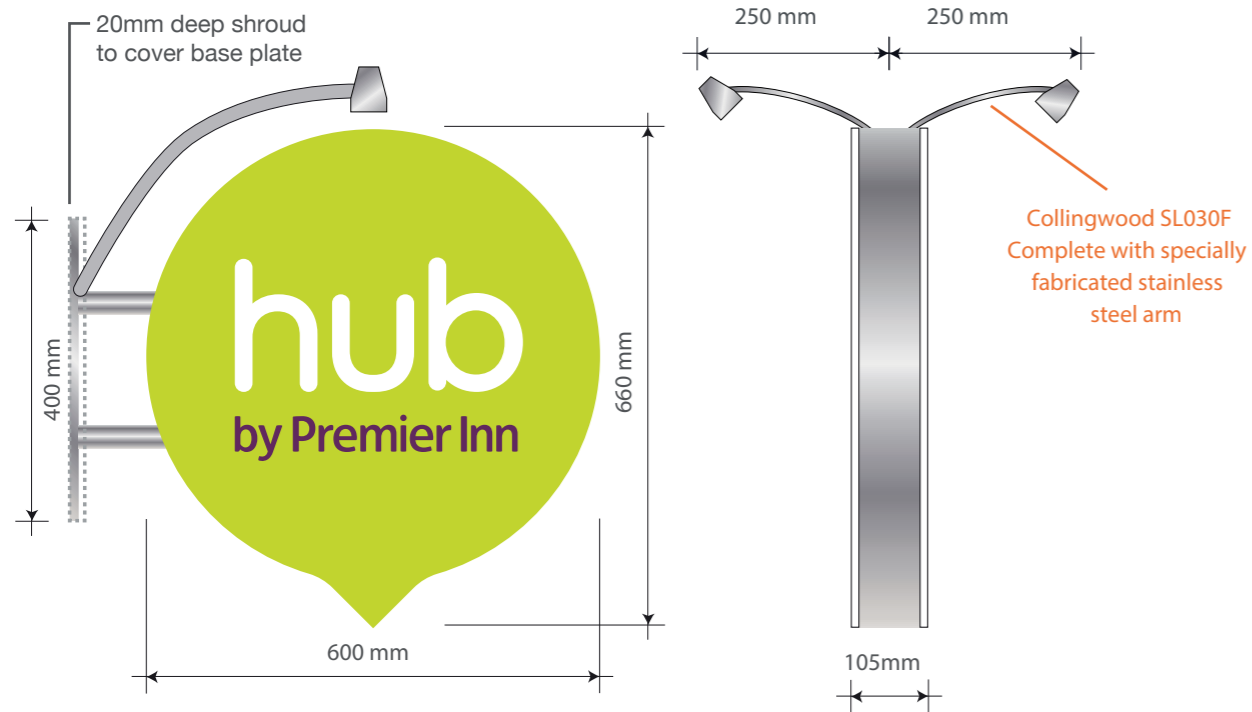
PLANNING DRAWING



ITEM 01 (Qty 1) HUB-EX07

Double sided externally illuminated projecting sign with brushed stainless steel bracket & shroud.  
 Each face to be 10mm thick clear acrylic with graphics applied directly to the rear.  
 Collingwood SL030F - Specially fabricated stainless steel arm fixed to 20mm deep stainless channel to encase cables  
 (impossible to trace through wall).  
 Scale 1:10

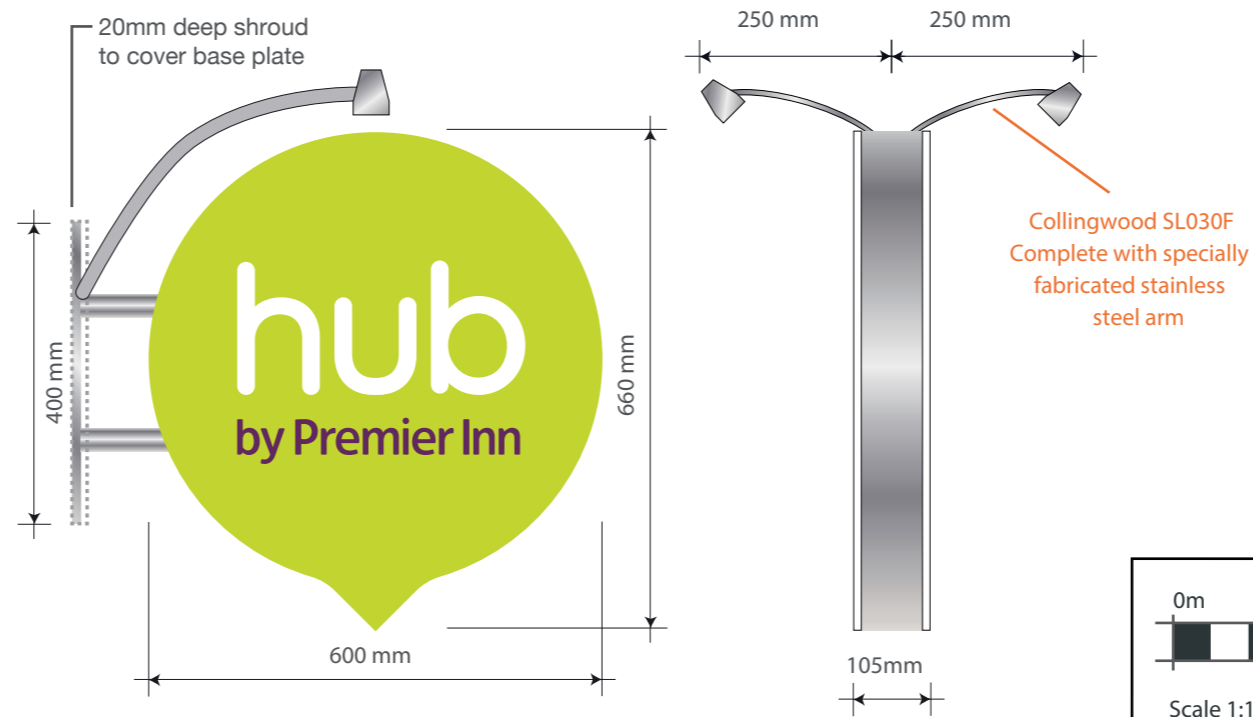
ITEM 02 DELETED



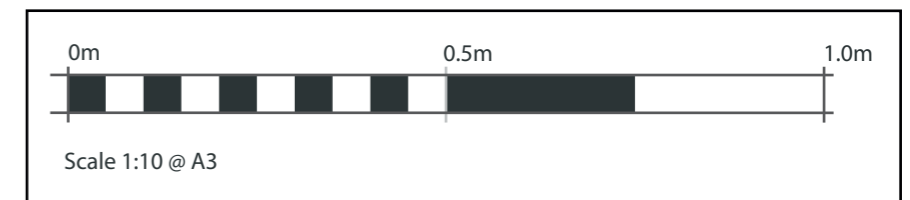
HAG - 3.6M

ITEM 03 (Qty 1) HUB-EX07

Double sided externally illuminated projecting sign with brushed stainless steel bracket & shroud.  
 Each face to be 10mm thick clear acrylic with graphics applied directly to the rear.  
 Collingwood SL030F - Specially fabricated stainless steel arm fixed to 20mm deep stainless channel to encase cables  
 (impossible to trace through wall).  
 Scale 1:10

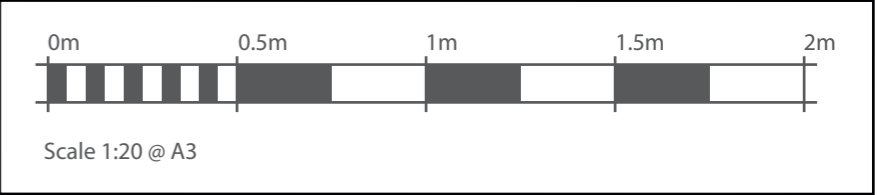
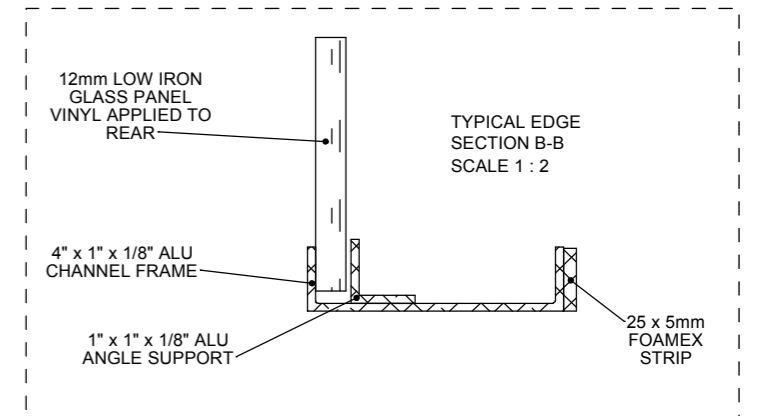
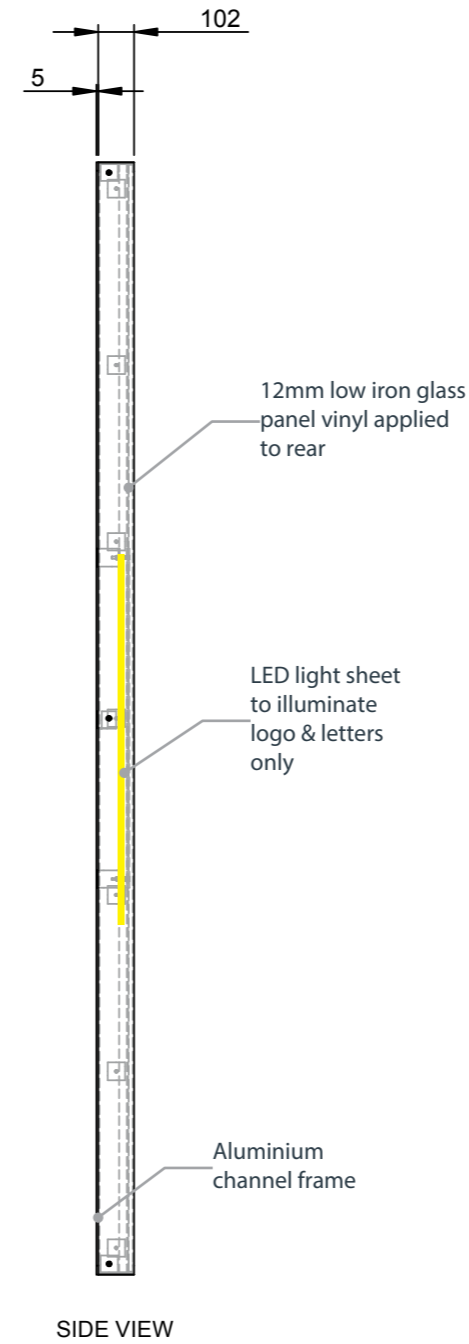


HAG - 3.7M



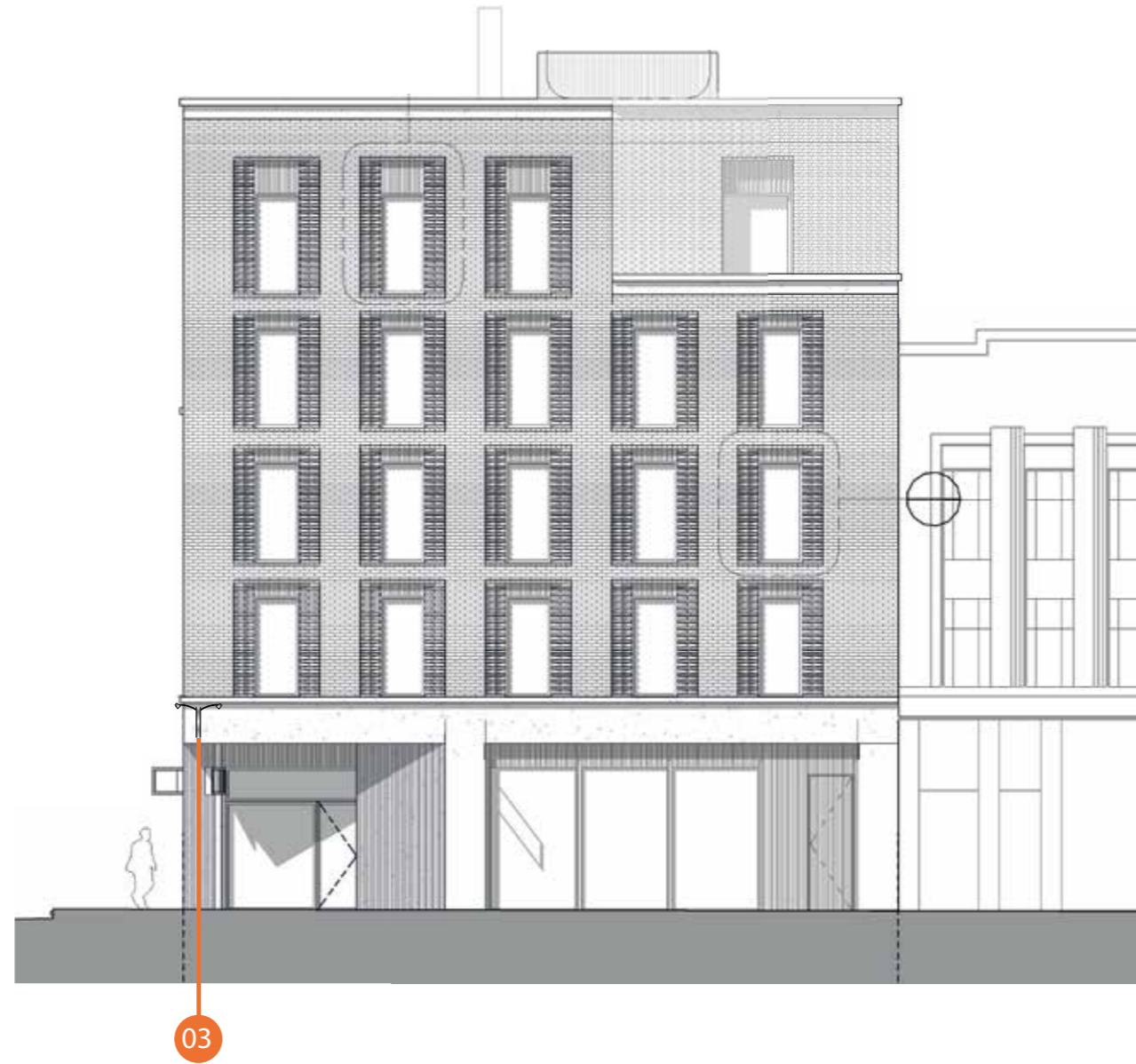
ITEM 04 (Qty 1) HUB-EX11

Steel illuminated frame with glass panel to front & painted Ral 7022 aluminium outer frame.  
 Glass panel to be reverse decorated with grey vinyl & Hub logo.  
 Full illumination to 'Hub' logo & text above & below only, grey remains non illuminated.  
 Illuminated by an internal 5300K light sheet.  
 Scale 1:20

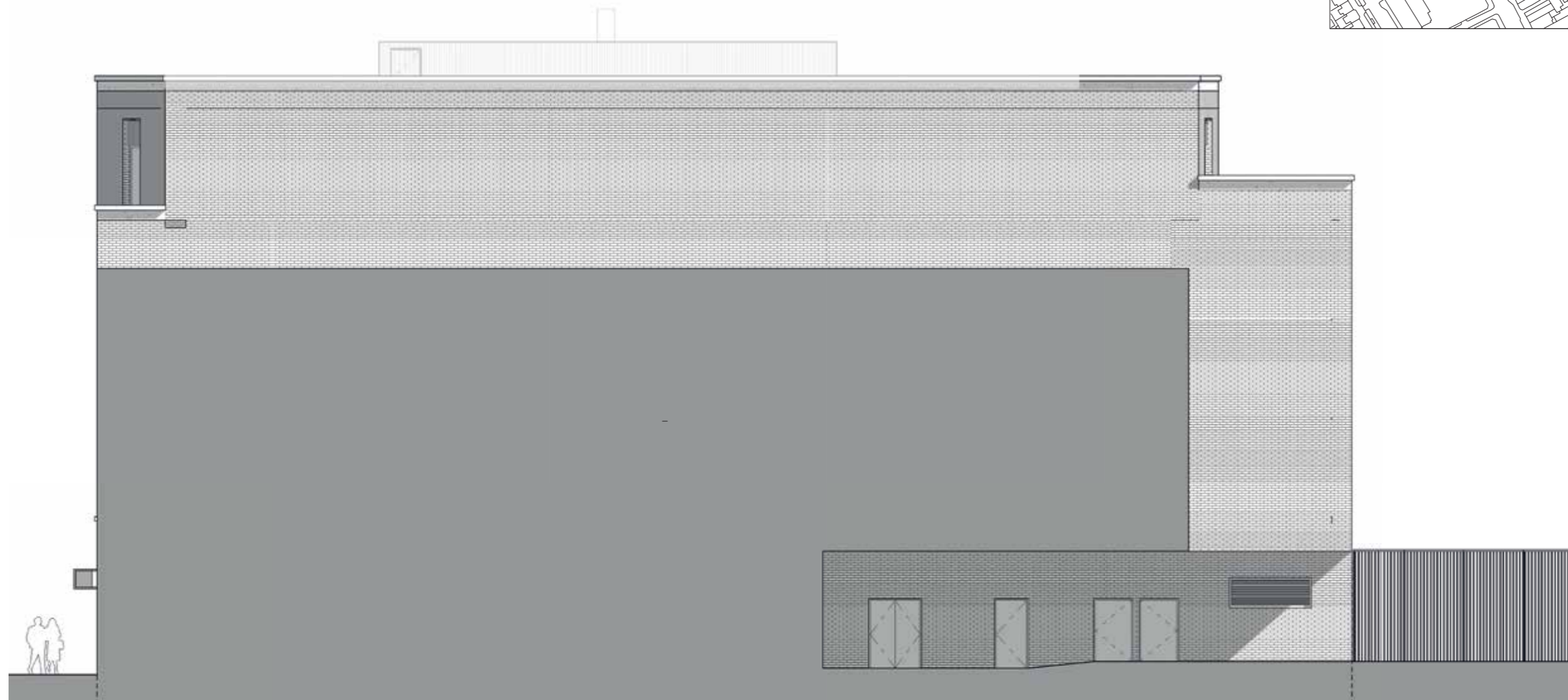




Scale 1:150 @ A3



Scale 1:150 @ A3



Scale 1:150 @ A3



Scale 1:150 @ A3

