

BREAKDOWN OF GROUND FLOOR AREAS
SALES AREA = 166 SQ.M.

OCCUPANCY LEVELS
USING OCCUPANCY FACTORS AS FOLLOWS:
SALES AREAS - 2 PERSON PER 1 SQ.M.
BOH AREAS - 30 PERSON PER 1 SQ.M.

SALES AREA: $166 / 2 = 83$ PEOPLE
BOH AREA: $15 / 30 = 1$ PERSON

TOTAL GROUND FLOOR OCCUPANCY = 84

ESCAPE ROUTES
TOTAL 2NO. ESCAPE ROUTES AS FOLLOWS:
(REFER TO REFS ON DRAWING)

ESCAPE CAPACITY FIGURES TAKEN FROM APPROVED DOCUMENT B, TABLE 4
1) ESCAPE 1, 5945mm CLEAR WIDTH 5945/5 = 1189 PEOPLE
1*) ESCAPE 1 ADJUSTED FOR EQUIPMENT, mm CLEAR WIDTH 2940/5 = 588 PEOPLE
2) ESCAPE 2, 2385mm CLEAR WIDTH 2385/5 = 477 PEOPLE
3) ESCAPE 3, 950mm CLEAR WIDTH 950/5 = 190 PEOPLE

TOTAL ESCAPE CAPACITY = 1255 (ADJUSTED FOR EQUIPMENT)

IN THE EVENT OF A FIRE, ALL OCCUPANTS CAN ESCAPE VIA THE ENTRANCES TO THE FRONT OF THE STORE. SHOULD ONE OF THESE ENTRANCES BE NON PASSABLE THEN THE OCCUPANTS CAN ESCAPE VIA THE ADJACENT ESCAPE.

TRAVEL DISTANCE LIMITATIONS = 45m IN MORE THAN ONE DIRECTION. AS DEFINED IN TABLE 2 OF APPROVED DOCUMENT B.

WITH THE ABOVE THE CASE: IT IS ALSO NOTED THAT THE TRAVEL DISTANCES IN THE SHOP ARE SUCH THAT THEY ALLOW ESCAPE IN A SINGLE DIRECTION (18M MAXIMUM) IN ACCORDNACE WITH TABLE 2.1

IT IS UNDERSTOOD THAT WHILST THE STORE IS CLOSED THERE MAY STILL BE OPPORTUNITY FOR LIMITED RESTOCKING WORKS FOR UP TO 4 STAFF. IN THIS CASE THE SHUTTERS TO THE FRONT ENTRANCES OF THE STORE WILL BE CLOSED. ESCAPE THROUGH THE SHUTTERS WILL BE POSSIBLE VIA THE FIRE ALARM FAIL SAFE OPEN AND MANUAL OVERRIDE.

- C02 C02 FIRE EXTINGUISHER
- H20 H20 FIRE EXTINGUISHER
- 60MINS FIRELINE
- ESCAPE ROUTES
- ALTERNATIVE ESCAPE ROUTES
- FD60S 60MINS FIRE RATED PARTITION
- SALES FLOOR AREA
- BOH FLOOR AREA
- EXIT EN ISO 7010 COMPLIANT ILLUMINATED FIRE ESCAPE SIGNAGE.

THIS DRAWING IS COPYRIGHT OF BROOKER FLYNN ARCHITECTS LTD AND MAY NOT BE REPRODUCED IN ANY FORM NOR TRANSFERRED TO OTHER PARTIES BY ELECTRONIC MEANS WITHOUT PRIOR WRITTEN CONSENT. NO DIMENSIONS TO BE SCALED FROM THIS DRAWING.

| REV | DATE | DESCRIPTION | DRAWN | CHECKED |
|-----|----------|--------------------------------------|-------|---------|
| 03 | 03/05/22 | SCALE BARS ADDED | GB | GB |
| 02 | 11/03/22 | MOE Signage Added for NR Application | GB | GB |
| 01 | 27/01/22 | FIRST ISSUE NEW MOE DOOR | GB | GB |



STORE NAME
WHS - Euston Colonnade

COUNTRY
UK

PROJECT
WHS - Euston Colonnade - Additional MOE Door

DRAWING
PROPOSED FIRE STRATEGY PLAN

CONSULTANT
BROOKER FLYNN ARCHITECTS

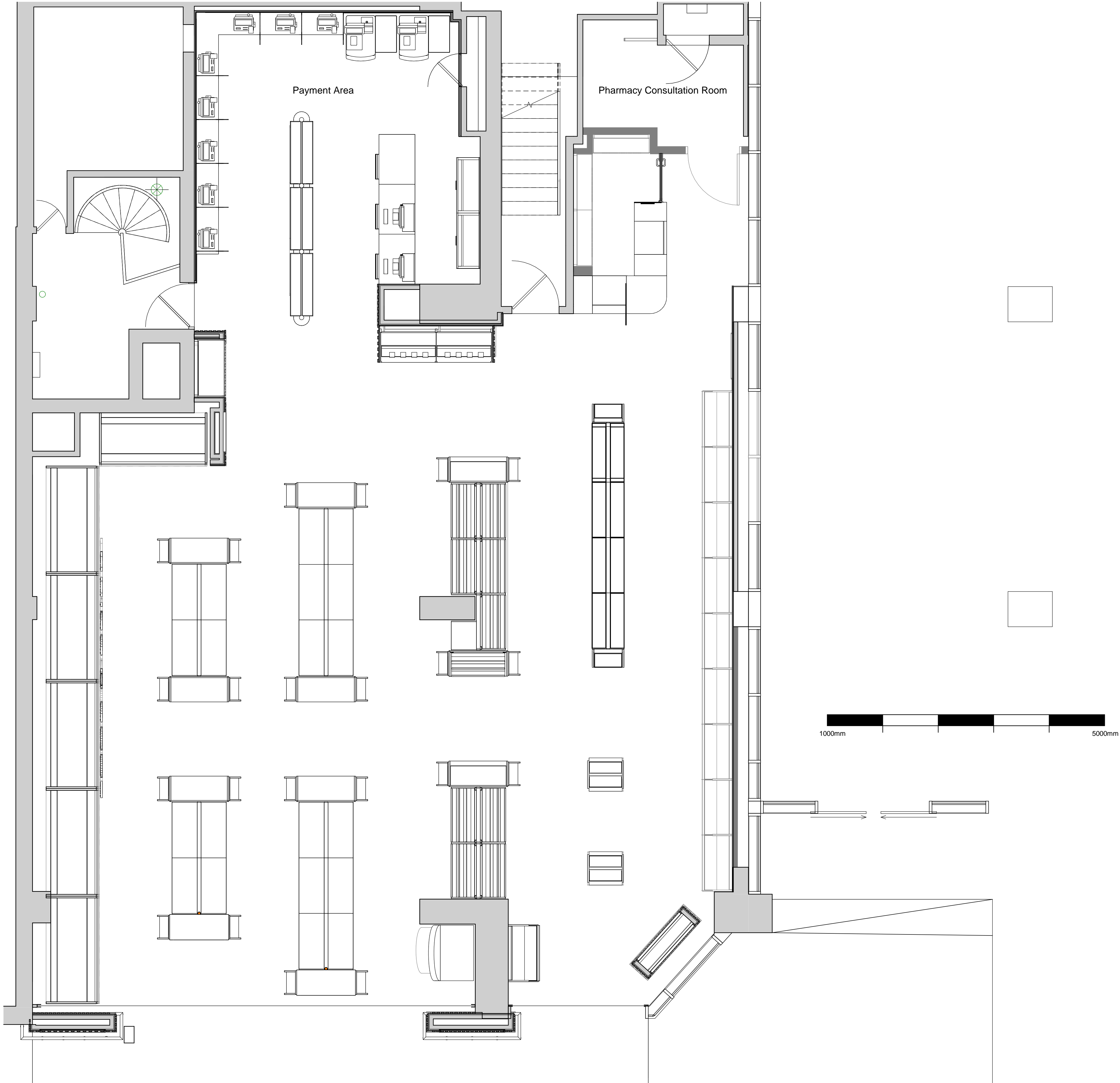
DISCIPLINE DESCRIPTION
ARCHITECTURE

CONSULTANT LOGO

BROOKERFLYNN
architects

| SCALE | PAPER SIZE | DATE | DRAWN | CHECKED |
|-----------------------|------------|-----------------|------------|---------|
| 1 : 35 | A1 | JAN'22 | GB | GB |
| STORE NUMBER | PROJECT No | DISCIPLINE CODE | DRAWING No | |
| TBC | | A | 04001 | |
| CONSULTANT PROJECT No | | STATUS | REV | |
| 20.1020a | | P | 03 | |

FOR APPROVAL



NOTES

THIS DRAWING IS COPYRIGHT OF BROOKER FLYNN ARCHITECTS LTD AND MAY NOT BE REPRODUCED IN ANY FORM NOR TRANSFERRED TO OTHER PARTIES BY ELECTRONIC MEANS WITHOUT PRIOR WRITTEN CONSENT. NO DIMENSIONS TO BE SCALED FROM THIS DRAWING.

| REV | DATE | DESCRIPTION | DRAWN | CHECKED |
|-----|----------|--------------------------|-------|---------|
| 02 | 03/05/22 | SCALE BARS ADDED | GB | GB |
| 01 | 27/01/22 | FIRST ISSUE NEW MOE DOOR | GB | GB |



STORE NAME
WHS - Euston Colonnade

COUNTRY
UK

PROJECT
WHS - Euston Colonnade -
Additional MOE Door

DRAWING
EXISTING GROUND FLOOR
GA PLAN

CONSULTANT
BROOKER FLYNN ARCHITECTS

DISCIPLINE DESCRIPTION
ARCHITECTURE

CONSULTANT LOGO

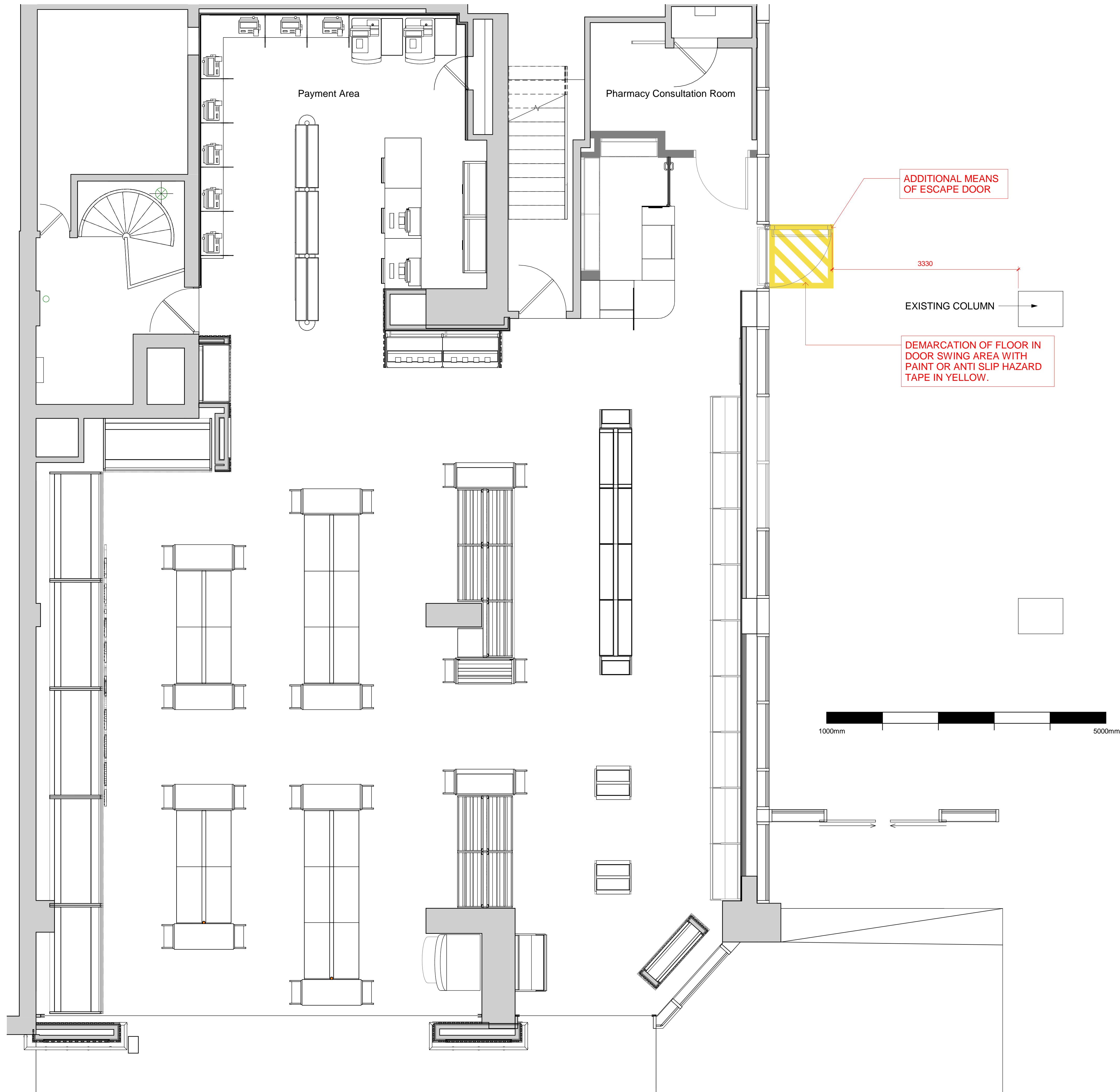


| SCALE | PAPER SIZE | DATE | DRAWN | CHECKED |
|--------|------------|---------|-------|---------|
| 1 : 35 | A1 | JAN '22 | GB | GB |

| STORE NUMBER | PROJECT No | DISCIPLINE CODE | DRAWING No |
|--------------|------------|-----------------|------------|
| TBC | | A | 06001 |

| CONSULTANT PROJECT No | STATUS | REV |
|-----------------------|--------|-----|
| 20.1020a | P | 02 |

FOR APPROVAL



| | | | | |
|-----|----------|--------------------------|-------|---------|
| 03 | 03/05/22 | SCALE BARS ADDED | GB | GB |
| 02 | 08/02/22 | REVISED IN LINE WITH NR | GB | GB |
| 01 | 27/01/22 | FIRST ISSUE NEW MOE DOOR | GB | GB |
| REV | DATE | DESCRIPTION | DRAWN | CHECKED |



STORE NAME
WHS - Euston Colonnade

COUNTRY
UK

PROJECT
WHS - Euston Colonnade -
Additional MOE Door

DRAWING
PROPOSED GROUND
FLOOR GA PLAN

CONSULTANT
BROOKER FLYNN ARCHITECTS

DISCIPLINE DESCRIPTION
ARCHITECTURE

CONSULTANT LOGO



| | | | | |
|-----------------------|------------|-----------------|------------|---------|
| SCALE | PAPER SIZE | DATE | DRAWN | CHECKED |
| 1 : 35 | A1 | JAN '22 | GB | GB |
| STORE NUMBER | PROJECT No | DISCIPLINE CODE | DRAWING No | |
| TBC | | A | 20001 | |
| CONSULTANT PROJECT No | | STATUS | REV | |
| 20.1020a | | P | 03 | |

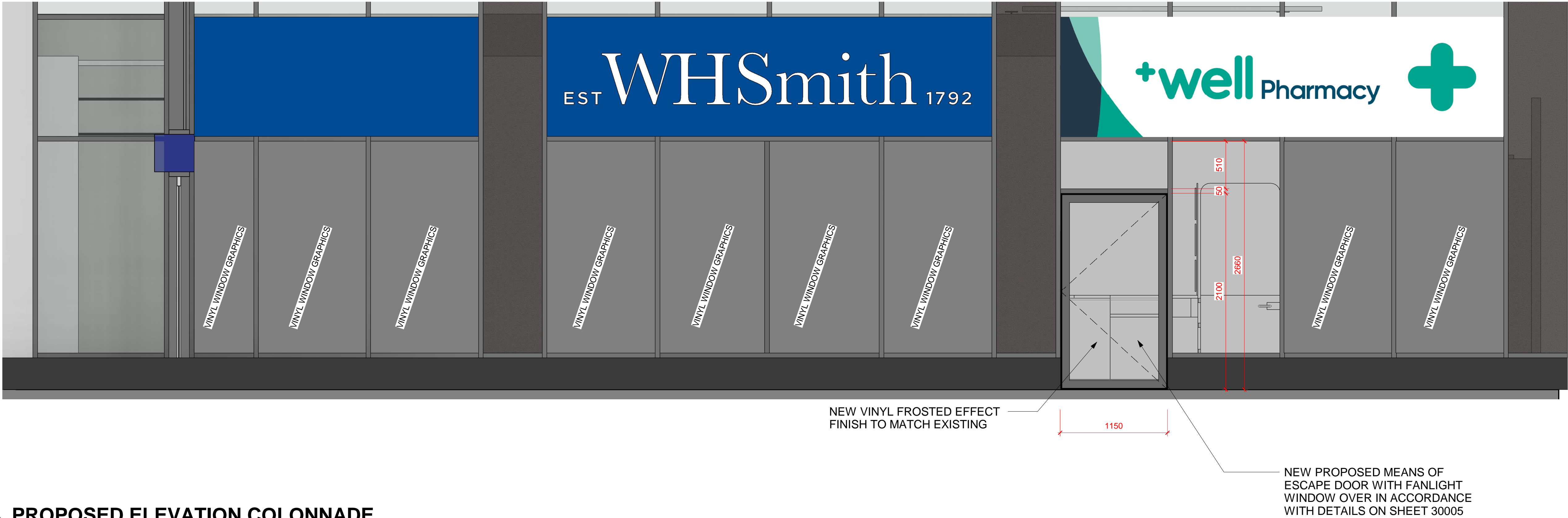
FOR APPROVAL



1

EXISTING ELEVATION COLONNADE

1 : 25



2

PROPOSED ELEVATION COLONNADE

1 : 25



| | | | | |
|----|----------|-----------------------------------|----|----|
| 03 | 03/05/22 | SCALE BARS ADDED | GB | GB |
| 02 | 08/02/22 | REVISED IN LINE WITH NR | GB | GB |
| 01 | 27/01/22 | COMMENTS FIRST ISSUE NEW MOE DOOR | GB | GB |

| REV | DATE | DESCRIPTION | DRAWN | CHECKED |
|-----|------|-------------|-------|---------|
|-----|------|-------------|-------|---------|



STORE NAME
WHS - Euston Colonnade

COUNTRY
UK

PROJECT
WHS - Euston Colonnade - Additional MOE Door

DRAWING
EXISTING AND PROPOSED ELEVATIONS

CONSULTANT
BROOKER FLYNN ARCHITECTS

DISCIPLINE DESCRIPTION
ARCHITECTURE

CONSULTANT LOGO

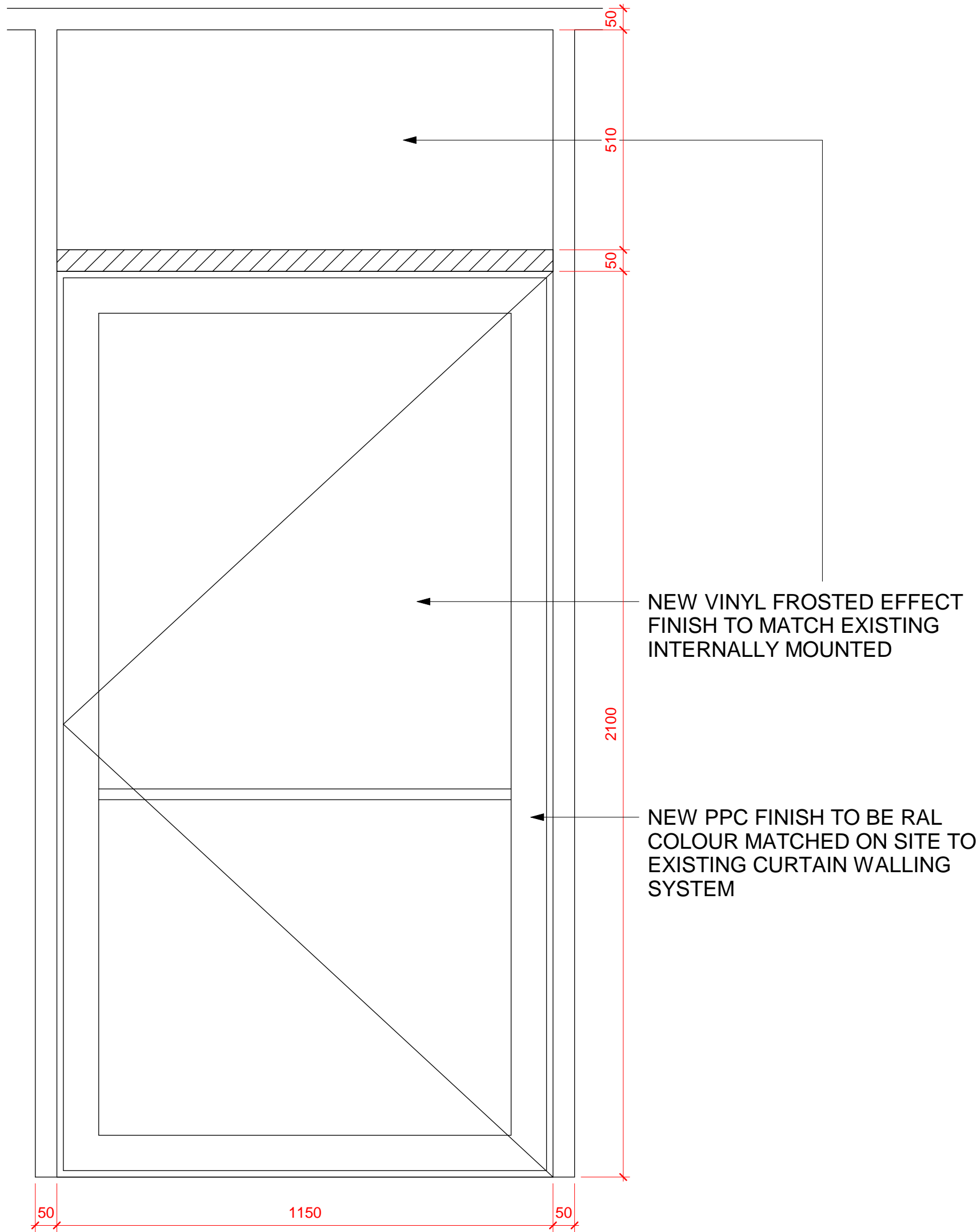
BROOKERFLYNN
architects

| SCALE | PAPER SIZE | DATE | DRAWN | CHECKED |
|--------|------------|----------|-------|---------|
| 1 : 25 | A1 | 01/27/22 | Auth | Checke |

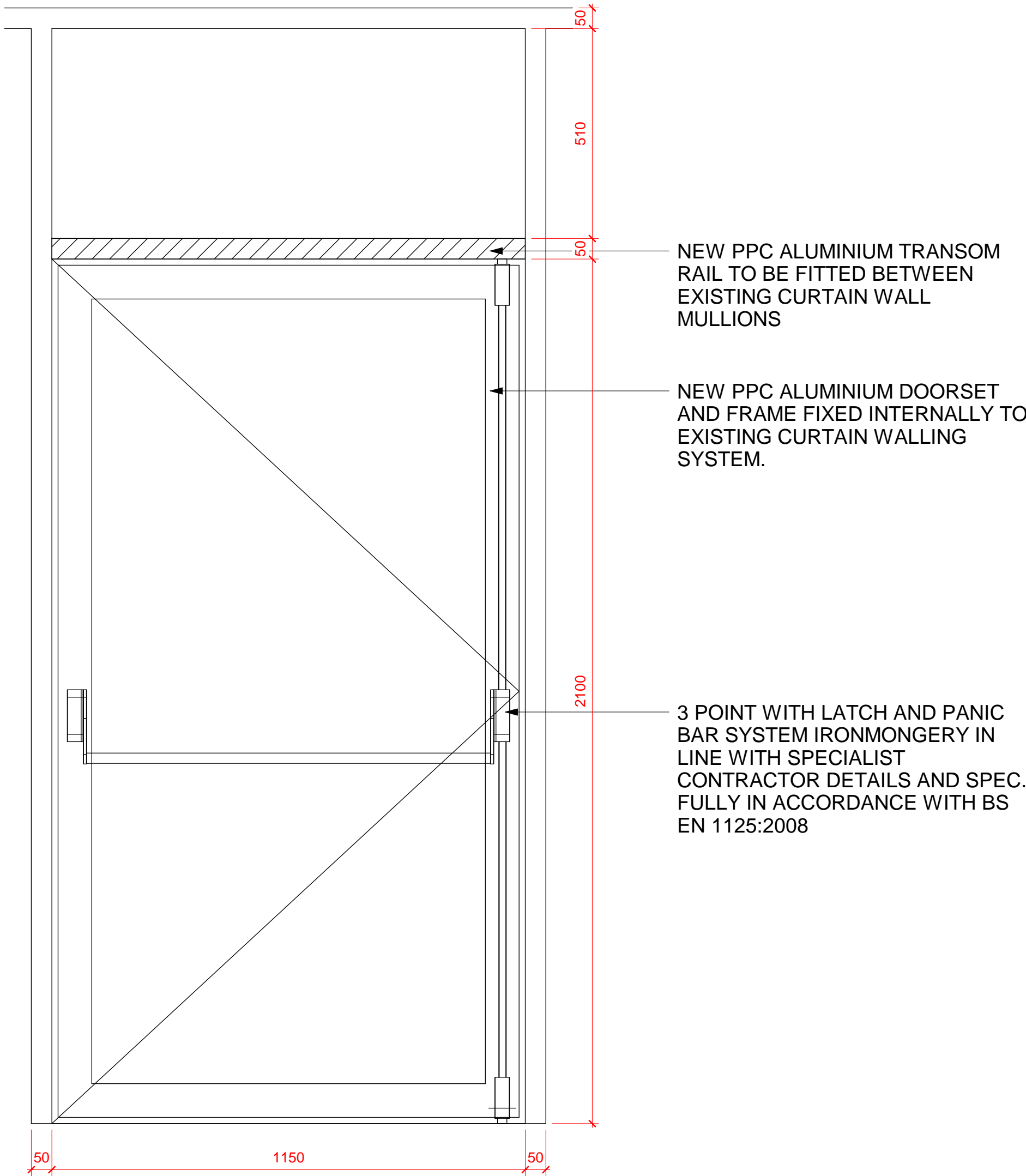
| STORE NUMBER | PROJECT No | DISCIPLINE CODE | DRAWING No |
|--------------|------------|-----------------|------------|
| | | | 23001 |

| CONSULTANT PROJECT No | STATUS | REV |
|-----------------------|--------|-----|
| 20.1020a | P | 03 |

FOR APPROVAL

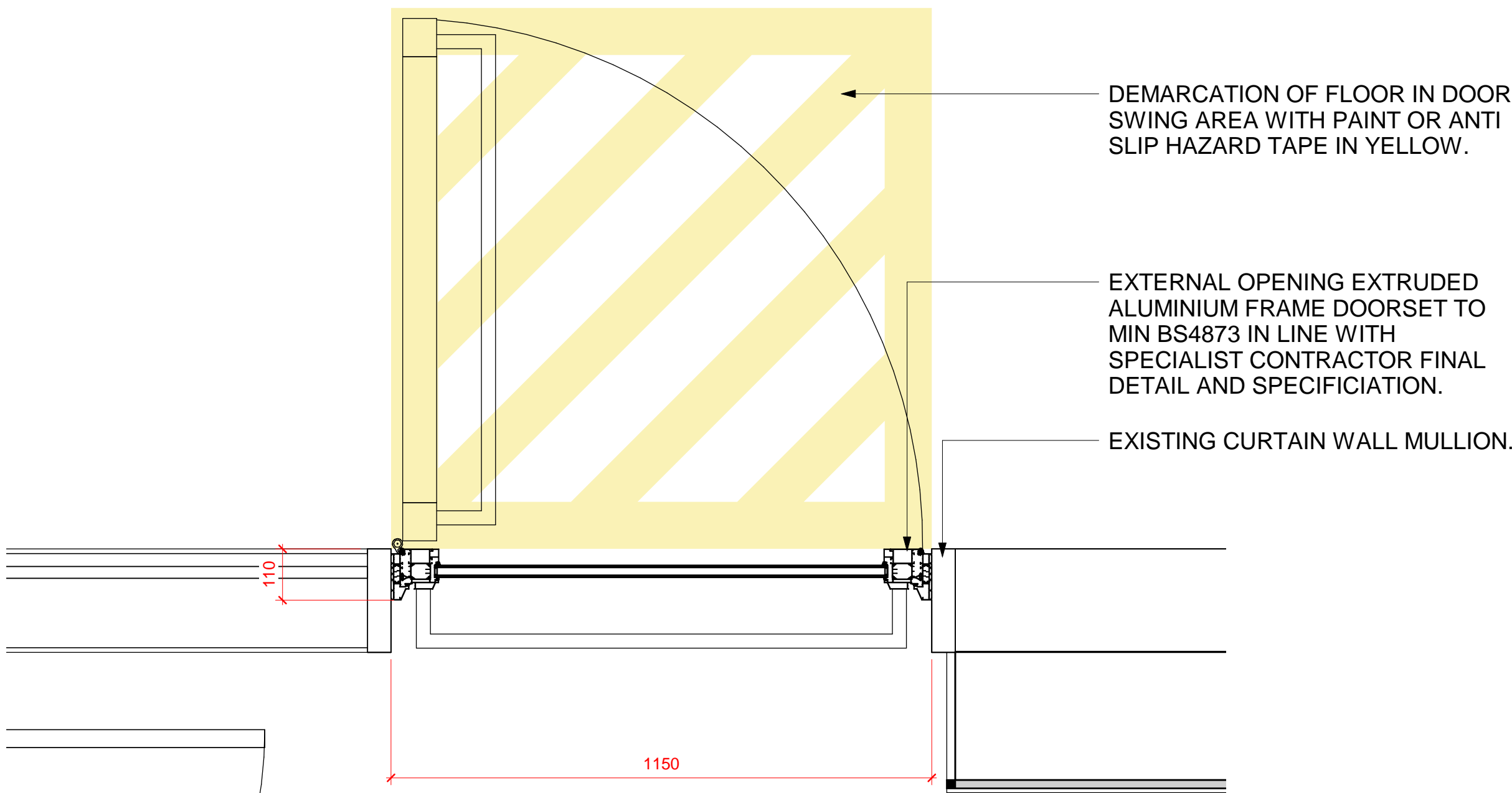


EXTERNAL ELEVATION



INTERNAL ELEVATION

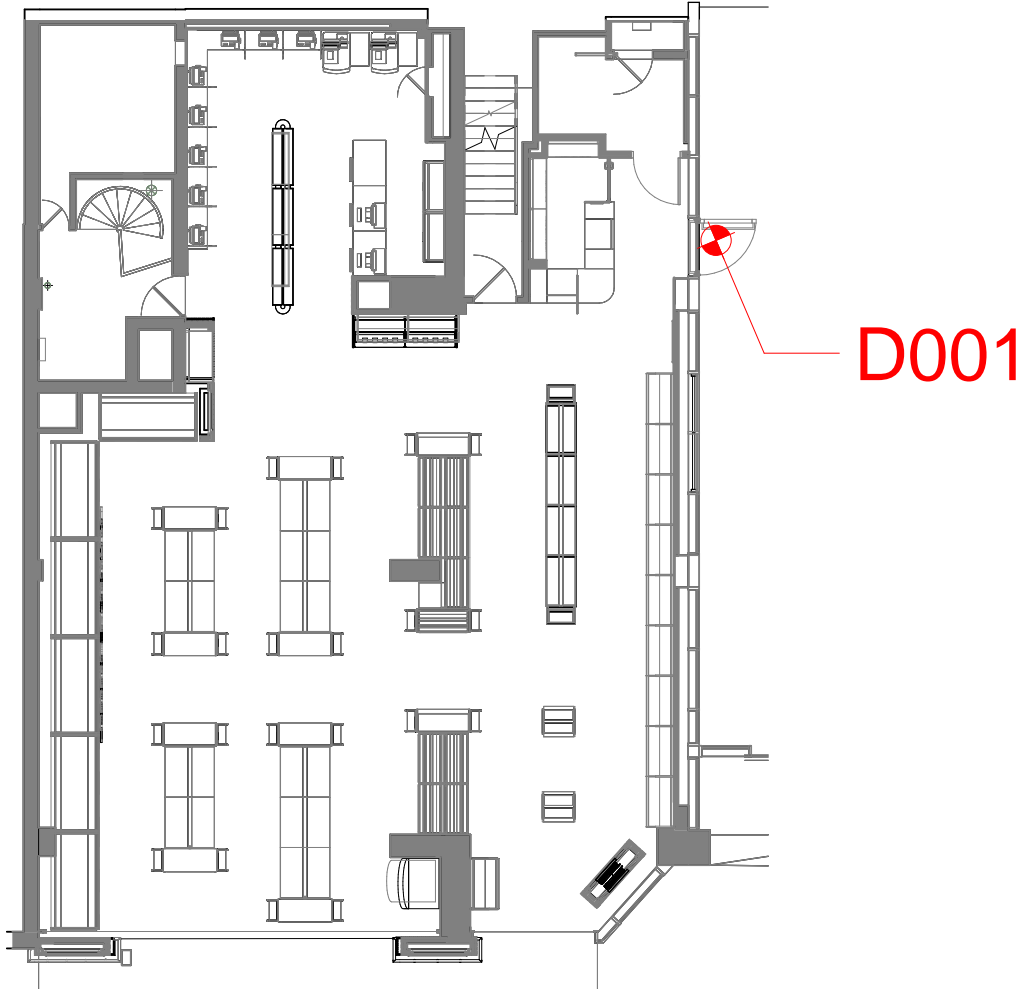
1 PROPOSED DOOR DETAIL
1 : 10



2 PROPOSED DOOR PLAN DETAIL
1 : 10

NOTES ORIGINAL A1

THIS DRAWING IS COPYRIGHT OF BROOKER FLYNN ARCHITECTS LTD AND MAY NOT BE REPRODUCED IN ANY FORM NOR TRANSFERRED TO OTHER PARTIES BY ELECTRONIC MEANS WITHOUT PRIOR WRITTEN CONSENT. NO DIMENSIONS TO BE SCALED FROM THIS DRAWING.



Door Details Key Plan
1 : 150

| | | | | |
|----|----------|--------------------------|----|----|
| 03 | 03/05/22 | SCALE BARS ADDED | GB | GB |
| 02 | 08/02/22 | REVISED IN LINE WITH NR | GB | GB |
| 01 | 27/01/22 | FIRST ISSUE NEW MOE DOOR | GB | GB |

| REV | DATE | DESCRIPTION | DRAWN | CHECKED |
|-----|------|-------------|-------|---------|
|-----|------|-------------|-------|---------|



STORE NAME
WHS - Euston Colonnade
COUNTRY
UK

PROJECT
WHS - Euston Colonnade -
Additional MOE Door

DRAWING
PROPOSED DOOR DETAILS

CONSULTANT
BROOKER FLYNN ARCHITECTS
DISCIPLINE DESCRIPTION
ARCHITECTURE
CONSULTANT LOGO



| SCALE | PAPER SIZE | DATE | DRAWN | CHECKED |
|-----------------|------------|--------|-------|---------|
| As indicated | A1 | JAN'22 | GB | GB |

| STORE NUMBER | PROJECT No | DISCIPLINE CODE | DRAWING No |
|--------------|------------|-----------------|------------|
| | | | 30005 |

| CONSULTANT PROJECT No | STATUS | REV |
|-----------------------|--------|-----|
| 20.1020a | P | 03 |

FOR APPROVAL