

Wicksteed playscapes 'Freddie Frog'

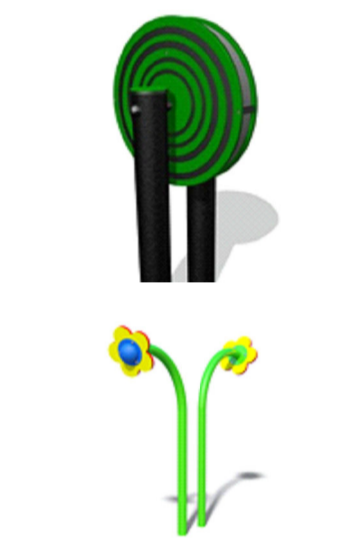
Wicksteed playscapes 'Tony Turtle'



Wicksteed playscapes 'Bee Seat'



Wicksteed playscapes 'Messy kitchen'

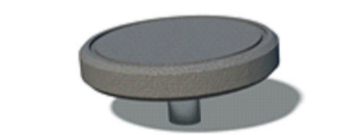


Wicksteed playscapes 'Rainwheel'

Wicksteed playscapes 'Talking Flowers'



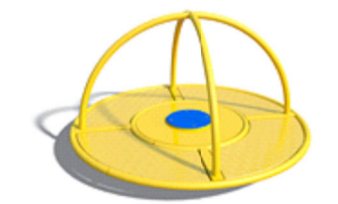
Wicksteed playscapes Trampoline



Wicksteed playscapes 'Dizzy Disc'



Wicksteed playscapes 'Play Pony'



Wicksteed playscapes 'Junior Comet'



Wicksteed playscapes 'Hammock'



Wicksteed playscapes 'Gwydyr'

Wicksteed playscapes 'Copse'



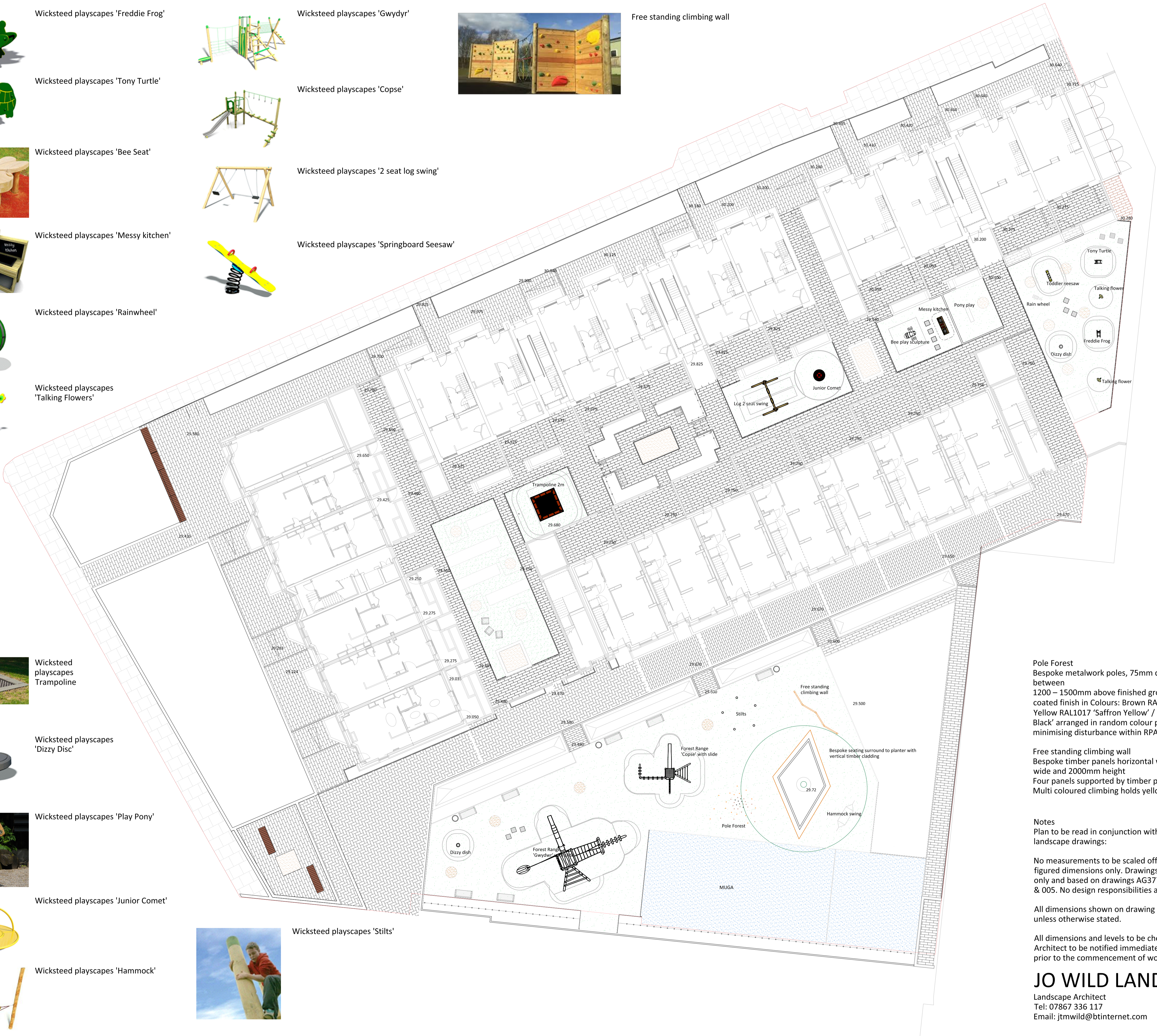
Wicksteed playscapes '2 seat log swing'



Wicksteed playscapes 'Springboard Seesaw'



Free standing climbing wall



Pole Forest
Bespoke metalwork poles, 75mm diameter heights varying between 1200 – 1500mm above finished ground level. Powder coated finish in Colours: Brown RAL8024 'Beige Brown' / Yellow RAL1017 'Saffron Yellow' / Black RAL9017 'Traffic Black' arranged in random colour pattern. Posts to be fixed minimising disturbance within RPA of retained tree

Free standing climbing wall
Bespoke timber panels horizontal with frame 1500mm wide and 2000mm height
Four panels supported by timber posts set in ground
Multi coloured climbing holds yellow, red and blue.

Notes
Plan to be read in conjunction with the engineer and landscape drawings:

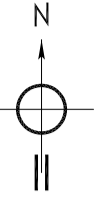
No measurements to be scaled off drawing. Worked from figured dimensions only. Drawings for planning purposes only and based on drawings AG377-AL-HD-1-002, 003,004 & 005. No design responsibilities accepted.

All dimensions shown on drawing are shown in millimetres unless otherwise stated.

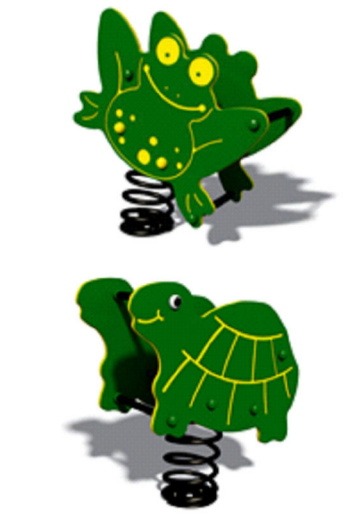
All dimensions and levels to be checked on site. Landscape Architect to be notified immediately of any discrepancies prior to the commencement of works.

JO WILD LANDSCAPES
Landscape Architect
Tel: 07867 336 117
Email: jtmwild@btinternet.com

- LEGEND (PLAY ITEMS)**
- Playtop safety surfacing, porous rubber crumb, 'Rainbow Green' sub-base to Engineer's recommendation
Charcon Flat Top edging 50mmW x 150mmD x 914mmL
 - Wicksteed Playscapes, Timber play 'Pony'
Play area 3600 x 4300mm
Surfacing requirements corresponding to a fall height of ≤ 0.60 m
 - Wicksteed Playscapes, Timber 'Bee' sculpture
Play area 3000 x 3200mm
Surfacing requirements corresponding to a fall height of ≤ 1.00 m
 - Wicksteed Playscapes, 'Freddie Frog' sit in spring mobile
Play area 3880 x 3365mm
Surfacing requirements corresponding to a fall height of ≤ 1.00 m
 - Wicksteed Playscapes, 'Tony Turtle' sit in spring mobile
Play area 3880 x 3365mm
Surfacing requirements corresponding to a fall height of ≤ 1.00 m
 - Wicksteed Playscapes, 'Messy Kitchen'
Play area 2803 x 1548mm
 - Wicksteed Playscapes, 'Rainwheel'
 - Wicksteed Playscapes, 'Junior Comet'
Play area 5300 x 5300mm
Surfacing requirements corresponding to a fall height of ≤ 1.00 m
 - Wicksteed Playscapes, Trampoline (built in)
Play area 5000 x 5000mm
Surfacing requirements corresponding to a fall height of ≤ 1.00 m
 - Wicksteed Playscapes, Timber 2 seat Swing
Play area 7900 x 3500mm
Surfacing requirements corresponding to a fall height of ≤ 1.40
 - Wicksteed Playscapes, 'Seesaw' spring
Play area 4210 x 3210mm
Surfacing requirements corresponding to a fall height of ≤ 1.00 m
 - Wicksteed Playscapes, 'Talking Flowers' x 2
 - Wicksteed Playscapes, 'Dizzy Disc'
Play area 3000 x 3000mm
Surfacing requirements corresponding to a fall height of ≤ 125mm
 - Wicksteed Playscapes, Hammock
Play area 2803 x 1548mm
 - Wicksteed Playscapes, Timber 'Stilts' 5 posts
Play area 8935 x 9165mm
Surfacing requirements corresponding to a fall height of ≤ 2.5 m
 - Wicksteed Playscapes, Forest Range 'Copse' with steel slide
Play area 8168 x 8000mm
Surfacing requirements corresponding to a fall height of ≤ 1.20 m
 - Wicksteed Playscapes, Forest Range 'Gwydyr' with steel slide
Play area 15054 x 10182mm
Surfacing requirements corresponding to a fall height of ≤ 2.5 m
 - Bespoke pole forest
Surfacing requirements corresponding to a fall height of ≤ 2.0 m
 - Bespoke free standing climbing wall
Surfacing requirements corresponding to a fall height of ≤ 2.0 m
 - Wicksteed Playscapes, MUGA
Dux Championship MUGA - 10m x 15m x 3M - 2 gates
 - Escofet, Benco Kiwi bench, 1800mm L x 610mm W x 830mmH or 600L x 610W x 830 with backrest/460 to seat H mm.
 - Bespoke seating built into planters - natural Bolondo timber, planed, sanded seat and back, 30 x 30mm section x 1120 and 1200mm lengths, refer to drawing ref: AGC377-AL-HD-3-003
 - Timberplay Moon timber bench, 1No 1800L x 770mmW x 400mmH and 1No 3000L x 740mmW x 760mmH with backrest and 2No 3000L x 740mmW x 400mmH without backrest
 - Timber Cube Seat, Terence Whewell solid oak cube seat 450L x 450W x 550mmH



Agar Grove Phase 1b
Approved Play Equipment



Wicksteed playscapes 'Freddie Frog'

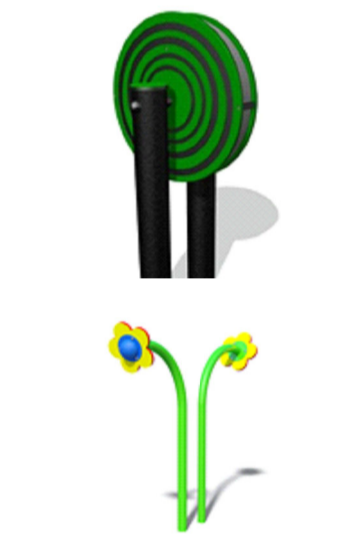
Wicksteed playscapes 'Tony Turtle'



Wicksteed playscapes 'Bee Seat'



Wicksteed playscapes 'Messy kitchen'

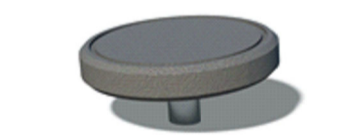


Wicksteed playscapes 'Rainwheel'

Wicksteed playscapes 'Talking Flowers'



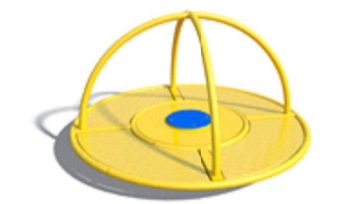
Wicksteed playscapes Trampoline



Wicksteed playscapes 'Dizzy Disc'



Wicksteed playscapes 'Play Pony'



Wicksteed playscapes 'Junior Comet'



Wicksteed playscapes 'Hammock'



Wicksteed playscapes 'Gwydyr'



Wicksteed playscapes 'Copse'



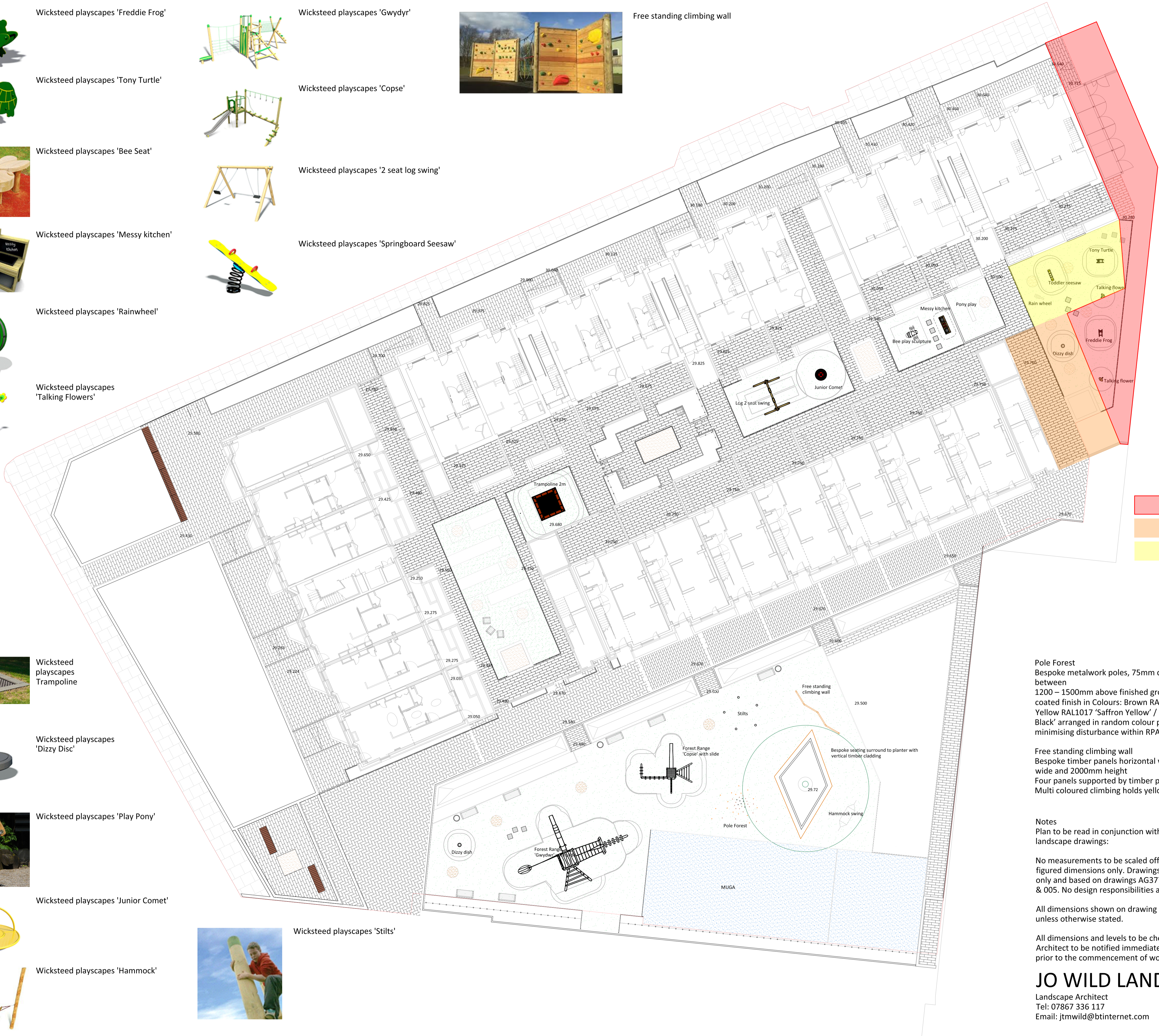
Wicksteed playscapes '2 seat log swing'



Wicksteed playscapes 'Springboard Seesaw'



Free standing climbing wall



- Phase 1c Hoarding
- Temp Turning Head
- Temp finish

Pole Forest
Bespoke metalwork poles, 75mm diameter heights varying between 1200 – 1500mm above finished ground level. Powder coated finish in Colours: Brown RAL8024 'Beige Brown' / Yellow RAL1017 'Saffron Yellow' / Black RAL9017 'Traffic Black' arranged in random colour pattern. Posts to be fixed minimising disturbance within RPA of retained tree

Free standing climbing wall
Bespoke timber panels horizontal with frame 1500mm wide and 2000mm height
Four panels supported by timber posts set in ground
Multi coloured climbing holds yellow, red and blue.

Notes
Plan to be read in conjunction with the engineer and landscape drawings:

No measurements to be scaled off drawing. Worked from figured dimensions only. Drawings for planning purposes only and based on drawings AG377-AL-HD-1-002, 003,004 & 005. No design responsibilities accepted.

All dimensions shown on drawing are shown in millimetres unless otherwise stated.

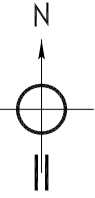
All dimensions and levels to be checked on site. Landscape Architect to be notified immediately of any discrepancies prior to the commencement of works.

JO WILD LANDSCAPES

Landscape Architect
Tel: 07867 336 117
Email: jtmwild@btinternet.com

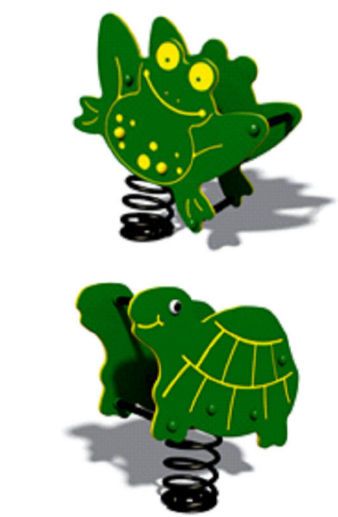
LEGEND (PLAY ITEMS)

- Playtop safety surfacing, porous rubber crumb, 'Rainbow Green' sub-base to Engineer's recommendation
Charcon Flat Top edging 50mmW x 150mmD x 914mmL
- Wicksteed Playscapes, Timber play 'Pony'
Play area 3600 x 4300mm
Surfacing requirements corresponding to a fall height of ≤ 0.60 m
- Wicksteed Playscapes, Timber 'Bee' sculpture
Play area 3000 x 3200mm
Surfacing requirements corresponding to a fall height of ≤ 1.00 m
- Wicksteed Playscapes, 'Freddie Frog' sit in spring mobile
Play area 3880 x 3365mm
Surfacing requirements corresponding to a fall height of ≤ 1.00 m
- Wicksteed Playscapes, 'Tony Turtle' sit in spring mobile
Play area 3880 x 3365mm
Surfacing requirements corresponding to a fall height of ≤ 1.00 m
- Wicksteed Playscapes, 'Messy Kitchen'
Play area 2803 x 1548mm
- Wicksteed Playscapes, 'Rainwheel'
- Wicksteed Playscapes, 'Junior Comet'
Play area 5300 x 5300mm
Surfacing requirements corresponding to a fall height of ≤ 1.00 m
- Wicksteed Playscapes, Trampoline (built in)
Play area 5000 x 5000mm
Surfacing requirements corresponding to a fall height of ≤ 1.00 m
- Wicksteed Playscapes, Timber 2 seat Swing
Play area 7900 x 3500mm
Surfacing requirements corresponding to a fall height of ≤ 1.40
- Wicksteed Playscapes, 'Seesaw' spring
Play area 4210 x 3210mm
Surfacing requirements corresponding to a fall height of ≤ 1.00 m
- Wicksteed Playscapes, 'Talking Flowers' x 2
- Wicksteed Playscapes, 'Dizzy Disc'
Play area 3000 x 3000mm
Surfacing requirements corresponding to a fall height of ≤ 125mm
- Wicksteed Playscapes, Hammock
Play area 2803 x 1548mm
- Wicksteed Playscapes, Timber 'Stilts' 5 posts
Play area 8935 x 9165mm
Surfacing requirements corresponding to a fall height of ≤ 2.5 m
- Wicksteed Playscapes, Forest Range 'Copse' with steel slide
Play area 8168 x 8000mm
Surfacing requirements corresponding to a fall height of ≤ 1.20 m
- Wicksteed Playscapes, Forest Range 'Gwydyr' with steel slide
Play area 15054 x 10182mm
Surfacing requirements corresponding to a fall height of ≤ 2.5 m
- Bespoke pole forest
Surfacing requirements corresponding to a fall height of ≤ 2.0 m
- Bespoke free standing climbing wall
Surfacing requirements corresponding to a fall height of ≤ 2.0 m
- Wicksteed Playscapes, MUGA
Dux Championship MUGA - 10m x 15m x 3M - 2 gates
- Escofet, Benco Kiwi bench, 1800mm L x 610mm W x 830mmH or 600L x 610W x 830 with backrest/460 to seat H mm.
- Bespoke seating built into planters - natural Bolondo timber, planed, sanded seat and back, 30 x 30mm section x 1120 and 1200mm lengths, refer to drawing ref: AGC377-AL-HD-3-003
- Timberplay Moon timber bench, 1No 1800L x 770mmW x 400mmH and 1No 3000L x 740mmW x 760mmH with backrest and 2No 3000L x 740mmW x 400mmH without backrest
- Timber Cube Seat, Terence Whewell solid oak cube seat 450L x 450W x 550mmH



Agar Grove Phase 1b

Current Temporary Condition



Wicksteed playscapes 'Freddie Frog'

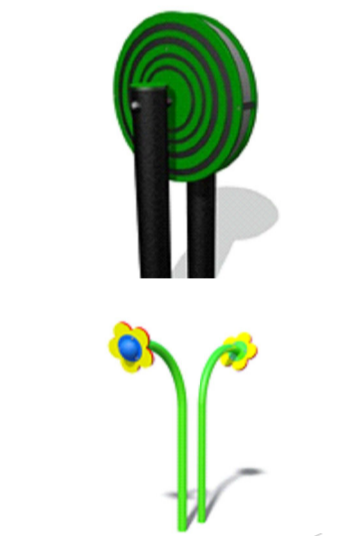
Wicksteed playscapes 'Tony Turtle'



Wicksteed playscapes 'Bee Seat'



Wicksteed playscapes 'Messy kitchen'

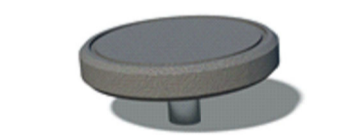


Wicksteed playscapes 'Rainwheel'

Wicksteed playscapes 'Talking Flowers'



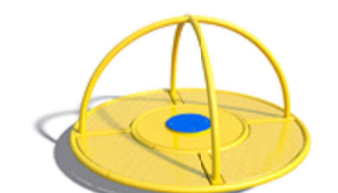
Wicksteed playscapes 'Trampoline'



Wicksteed playscapes 'Dizzy Disc'



Wicksteed playscapes 'Play Pony'



Wicksteed playscapes 'Junior Comet'



Wicksteed playscapes 'Hammock'



Wicksteed playscapes 'Gwydyr'



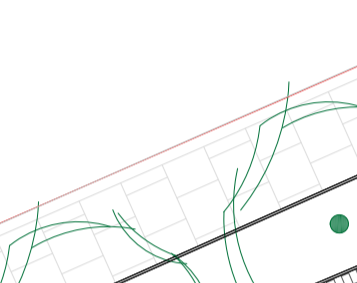
Wicksteed playscapes 'Copse'



Wicksteed playscapes '2 seat log swing'

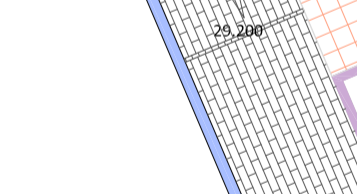


Wicksteed playscapes 'Springboard Seesaw'



Wicksteed playscapes 'Rainwheel'

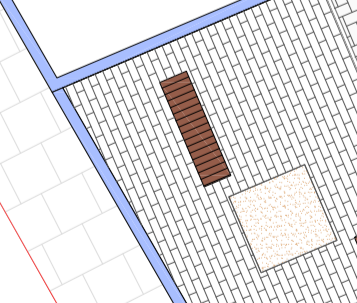
Wicksteed playscapes 'Talking Flowers'



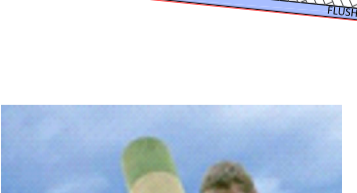
Wicksteed playscapes 'Trampoline'



Wicksteed playscapes 'Dizzy Disc'



Wicksteed playscapes 'Play Pony'



Wicksteed playscapes 'Junior Comet'



Wicksteed playscapes 'Hammock'

Wicksteed playscapes 'Stilts'



Wicksteed playscapes 'Stilts'

LEGEND (HARD WORKS)

- Permeable Charcon Andover Textured Infilta range, colour 'Silver Fleck' 100mmW x 200mmL x 80mmD, staggered bond, sub-base to Engineer's recommendation for pedestrian traffic
- Charcon Andover Textured range, colour 'Silver Fleck', 100mmW x 200mmL x 80mmD, stretcher bond, sub-base to Engineer's recommendation for pedestrian traffic
- Clay tiles to architect's specification
- Gabions 20 x 300 x 1000mm (or to fit)
- Phase 1B boundary line

- Make good stopping up to match existing paving and kerbs
- Permeable Charcon Andover Textured Infilta range, colour 'Silver Fleck' 100mmW x 300mmL x 80mmD, staggered bond, sub-base to Engineer's recommendation for pedestrian traffic
- Charcon Andover Textured range, colour 'Silver Fleck' 100mmW x 300mmL x 80mmD, stretcher bond, sub-base to Engineer's recommendation for pedestrian traffic
- Charcon Andover Textured range, colour 'Silver Fleck' 100mmW x 300mmL x 80mmD, 90° herringbone pattern, sub-base to Engineer's recommendation for vehicular traffic
- Charcon Andover Textured range, colour 'Silver Fleck' 100mmW x 300mmL x 80mmD, staggered bond pattern, sub-base to Engineer's recommendation for vehicular traffic
- Charcon ECO CSK edging 125mmW x 255mmD x 914mm L, laid with upstand
- Charcon Flat Top edging 59mmW x 519mmD x 914mm L, laid flush
- Charcon ECO CSK edging 125mmW x 255mmD x 914mm L, laid flush
- Garden walls designed by others
- Retaining wall - to engineer's specification with Kellen Breccia 'Grigio' cladding, Breccia flag paving, Series 200mm, 200mmW x 400mmL x 50mmD, Marshalls Natural Stone Group (Off white) copings, diamond sawn finish; 917, 300mm W x 75mm D assorted lengths to fit
- Prefabricated plant containers - Excofet Ltd, Icaria Planter, granite grey cast stone, light grey, 116 x 116 x 90mm high
- Raised brick plant containers - brick, bond and joints to match architectural brickwork of associated plot
- Charcon ECO CSK edging 125mmW x 255mmD x 914mm L laid flush or with upstand (F = Flush)
- Charcon ECO CSK 914mm x 290mm x 200mm SQ laid flush
- Sheffield Cycle Stand - Anthracite Grey RAL 7016.
- MUGA - 3.0m high ball stop fence with 2 no. single gate access, proprietary porous coloured 'Classic Blue' macadam surface. Fixed basketball hoops, line markings for informal games use for basketball and 5-a-side football
- Playtop safety surfacing, porous rubber crumb, 'Rainbow Green' sub-base to Engineer's recommendation
- In situ concrete retaining walls and seating to MUGA and supporting fence to MUGA, detailing to engineer's specification
- Jones of Oswestry Arbor-Slot recessed tree surround - Product code: DPA/6/SP/A/1060/15/105/B4/M2, 2000 x 2000mm overall with 1060mm square aperture for tree.
- Edging to tree planting pit - Steel edge 200mm high with welded flanges for fixing, to form 1200mm diameter circular form to tree surround within soft play area.
- Escofet, Benco Kiwi bench, 1800mm L x 610mm W x 830mmH or 600L x 610W x 830 with backrest/460 to seat H mm.
- Bespoke seating built into planters - natural Bolondo timber, planed, sanded seat and back, 30 x 30mm section x 1120 and 1200mm lengths, refer to drawing ref: AGC377-AL-HD-3-003
- Timberplay Moon timber bench, 1No 1800L x 770mmW x 400mmH and 1No 3000L x 740mmW x 760mmH with backrest and 2No 3000L x 740mmW x 400mmH without backrest
- Timber Cube Seat, Terence Whewell solid oak cube seat 450L x 450W x 550mmH
- Metal trellis bespoke - refer to drawing ref: Anthracite Grey, AGC377-AL-HD-3-013
- Pergola metalwork bespoke - refer to drawing ref: Anthracite Grey, AGC377-AL-HD-3-014
- Steel rope trellis system - Jakon Inox system, Stainless steel rope wire, 4mm diameter. Horizontal wires fixed at 500mm vertical centres from ground level up to 2500mm
- Bin - Arca Circular Litter Bin / ARC 5 GPPC, 50L capacity

Phase 1c works

Notes
Plan to be read in conjunction with the engineer and landscape drawings:

No measurements to be scaled off drawing. Worked from figured dimensions only. Drawings for planning purposes only and based on drawings AG377-AL-HD-1-002, 003,004 & 005. No design responsibilities accepted.

All dimensions shown on drawing are shown in millimetres unless otherwise stated.

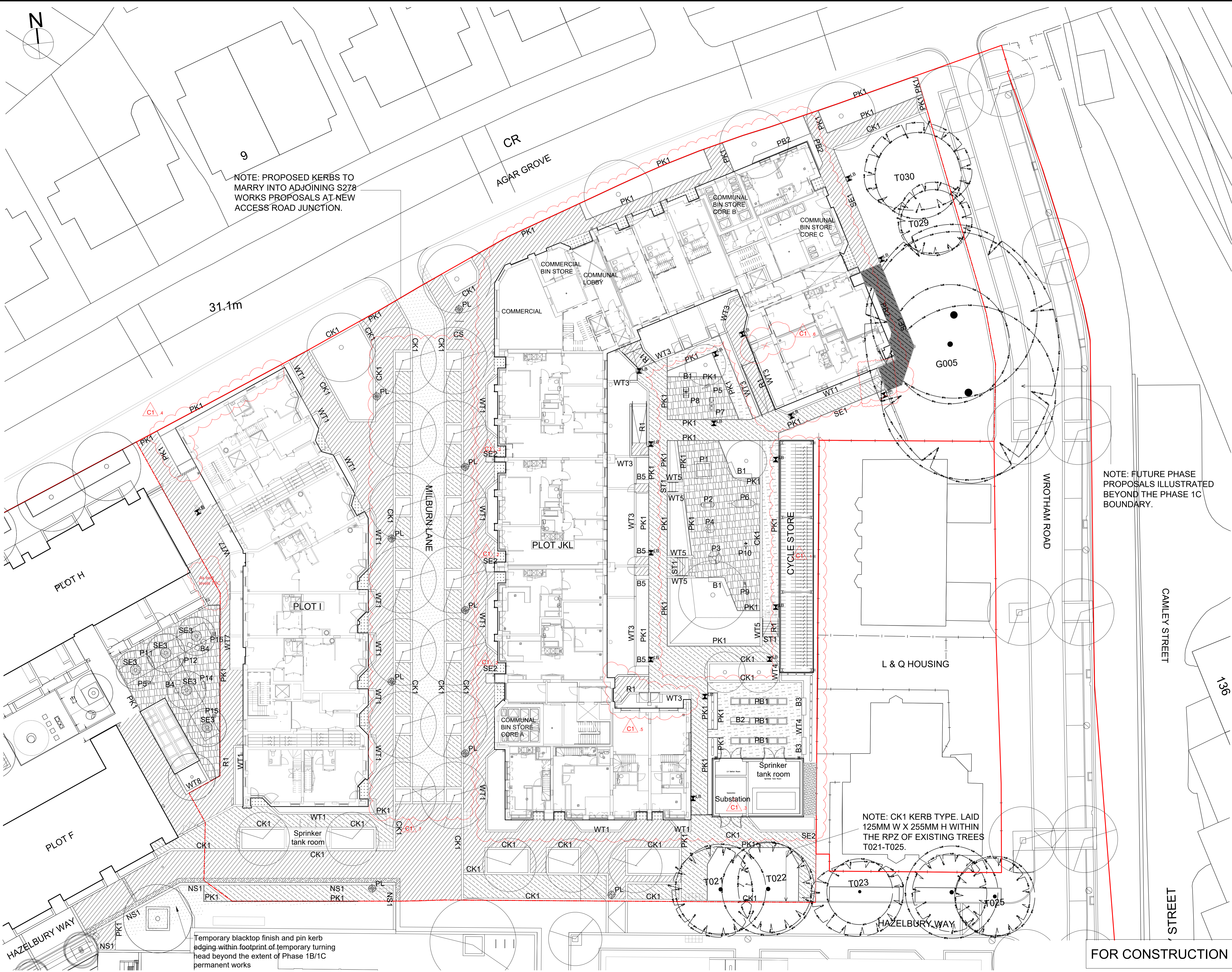
All dimensions and levels to be checked on site. Landscape Architect to be notified immediately of any discrepancies prior to the commencement of works.

JO WILD LANDSCAPES

Landscape Architect
Tel: 07867 336 117
Email: jtmwild@btinternet.com

Agar Grove Phase 1b

Revised Play
Equipment Extents



NOTE: PROPOSED KERBS TO MARRY INTO ADJOINING S278 WORKS PROPOSALS AT NEW ACCESS ROAD JUNCTION.

NOTE: FUTURE PHASE PROPOSALS ILLUSTRATED BEYOND THE PHASE 1C BOUNDARY.

NOTE: CK1 KERB TYPE. LAID 125MM W X 255MM H WITHIN THE RPZ OF EXISTING TREES T021-T025.

Temporary blacktop finish and pin kerb edging within footprint of temporary turning head beyond the extent of Phase 1B/1C permanent works

GENERAL NOTES:

- All dimensions and levels to be checked and verified on site before commencing any work or producing shop drawings
- This drawing is to be read in conjunction with all other relevant drawings, specifications and schedules
- Any discrepancy concerning the drawings should be referred to the originator / CA immediately
- All dimensions in millimetres unless noted otherwise
- All levels in metres
- Existing service alignments to be checked on site by the contractor on site by the contractor prior to construction work commencing
- The content of this drawing is to be read in conjunction with the latest project CDM risk register

NOTES:

- Refer to General Arrangement drawings, Landscape Details and Landscape Specification as cross reference documents for all landscape proposals.
- Refer to Civil Engineer's details and specification for all proposed paving makeups and drainage. Shown indicatively in Landscape Architect's drawings.
- Refer to M+E Engineer's details and specification for all utilities and lighting proposals. Shown indicatively in Landscape Architect's drawings.
- Refer to Structural Engineer's information for all external structures and footings. Shown indicatively in Landscape Architect's drawings.
- All works to existing trees or within the Root Protection Zone (RPZ) of the existing trees to be carried out in strict accordance with BS 5837:2012. To be read in conjunction with the Arboricultural Impact Assessment (AIA) by Hayden's Arboricultural Consultants.
- Contractor to make provision for further site investigation to determine the exact extent of existing tree roots and localised level survey at each tree.
- Please refer to the site wide drawing by Hawkins Brown, reference AGV-HBA-NE-00-DR-A-20-0001 for the Active Site Boundary including proposed hoarding lines.
- Contractor to allow for positive connections of all tree drains to existing/proposed surface water drainage system or soakaway agreed with Engineer's prior to commencement. Refer to Engineer's details and specification for all structural, services, drainage and pavement makeup requirements.
- Softworks Details to be read in conjunction with Soiling General Arrangement and Soft Landscape General Arrangement plans AGC377-AL-TZ-1-001 to 004 and AGC377-AL-SW-1-001 to 004 and Plant Schedules.
- Exact location of aeration pipes to tree pits to be set out on site to allow for correct positioning of tree rootball in tree pits. Shown indicatively only on Landscape Details.

AMENDMENTS FOR C1:

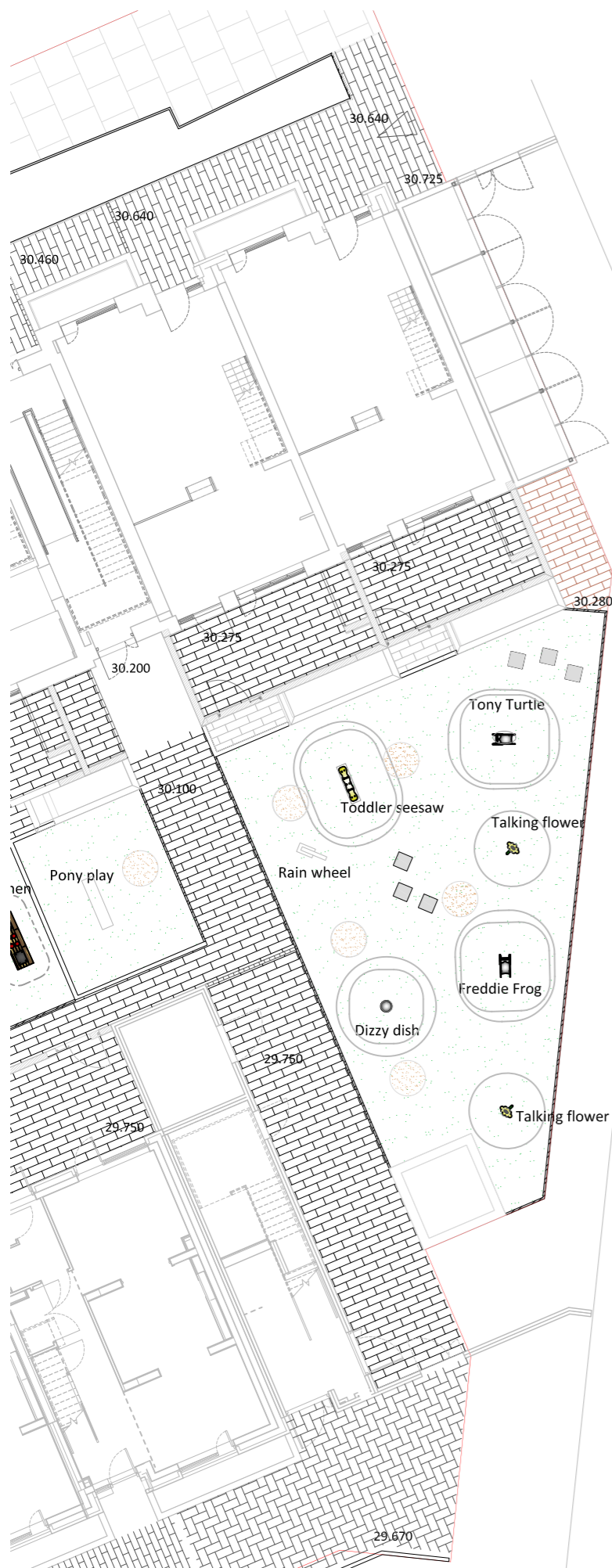
- Updated substation and cycle store layouts shown on drawing
- Planter layout updated to avoid clash with manholes
- Planter coordinated with walls connecting to building on revised architectural layout
- Landscape to north west of block I amended to accommodate garden access from rear door - steel planter omitted and wall omitted. Paving and planting extents changed
- Updated garden wall location to avoid clash with manhole
- Updated wall and gate position following coordination with HBA
- Tree pits moved to avoid clashes with installed drainage

C1	05.07.2022	FOR CONSTRUCTION	PJ	PC
Rev.	Date	Description	Drawn	Ch'd

grant associates
Landscape Architecture, Urban Design, Creative Ecology
22 Milk Street, Bath BA1 1UT
T: +44 (0) 1225 332664, F: +44 (0) 1225 420803
E: info@grant-associates.co.uk

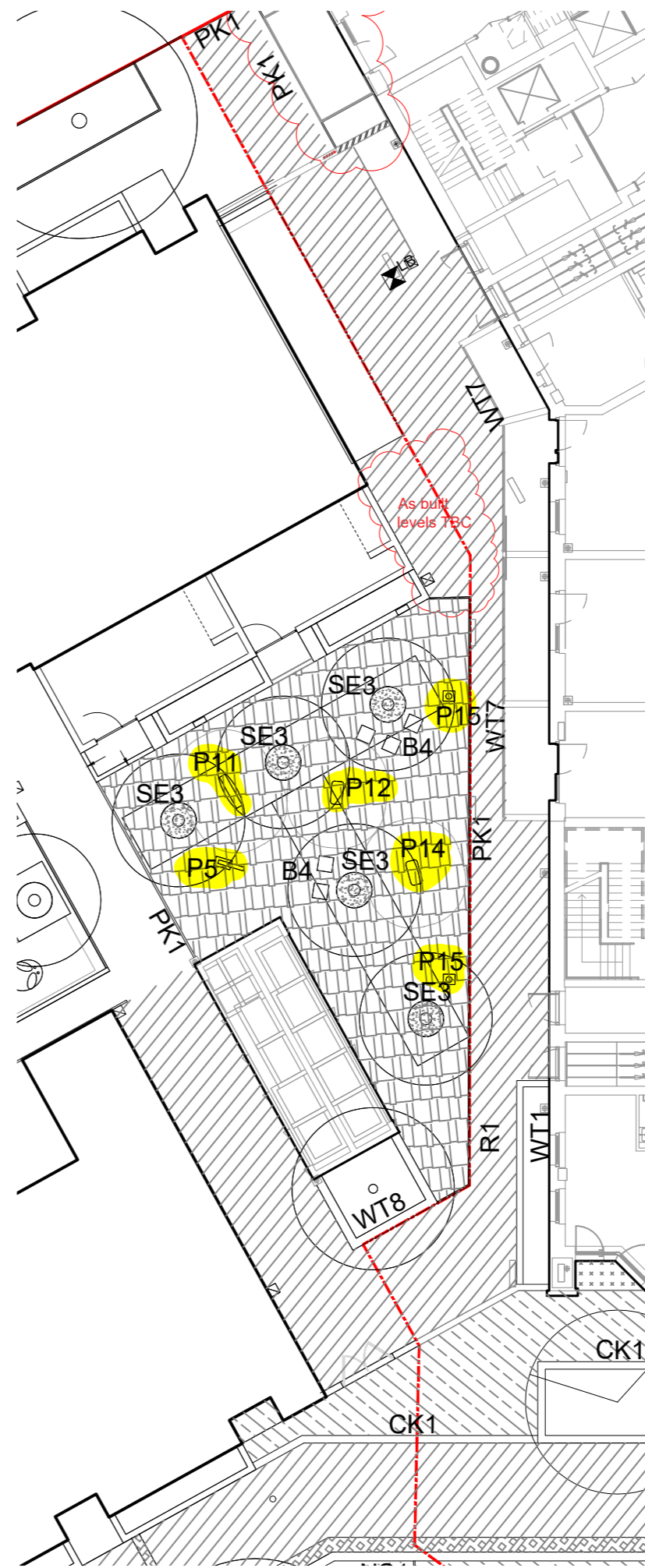
Agar Grove Phase 1
Proposed Hard Landscape

FOR CONSTRUCTION



Agar Grove Phase 1b

-  Wicksteed Playscapes, 'Rainwheel'
-  Wicksteed Playscapes, 'Freddie Frog' sit in spring mobile
Play area 3880 x 3365mm
Surfacing requirements corresponding to a fall height of ≤ 1.00 m
-  Wicksteed Playscapes, 'Tony Turtle' sit in spring mobile
Play area 3880 x 3365mm
Surfacing requirements corresponding to a fall height of ≤ 1.00 m
-  Wicksteed Playscapes, 'Seesaw' spring
Play area 4210 x 3210mm
Surfacing requirements corresponding to a fall height of ≤ 1.00 m
-  Wicksteed Playscapes, 'Talking Flowers' x 2
-  Wicksteed Playscapes, 'Dizzy Disc'
Play area 3000 x 3000mm
Surfacing requirements corresponding to a fall height of ≤ 125 mm



Agar Grove Phase 1c

Wickstead Playscapes

P5 - 'Rainwheel' Sensory play structure

P11 - 'Seesaw' Spring

P12 - 'Toni Turtle'

P14 - 'Freddie Frog'

P15 - 'Talking Flowers' x 2

Agar Grove
Phase 1b & 1c

Play Equipment
Comparison