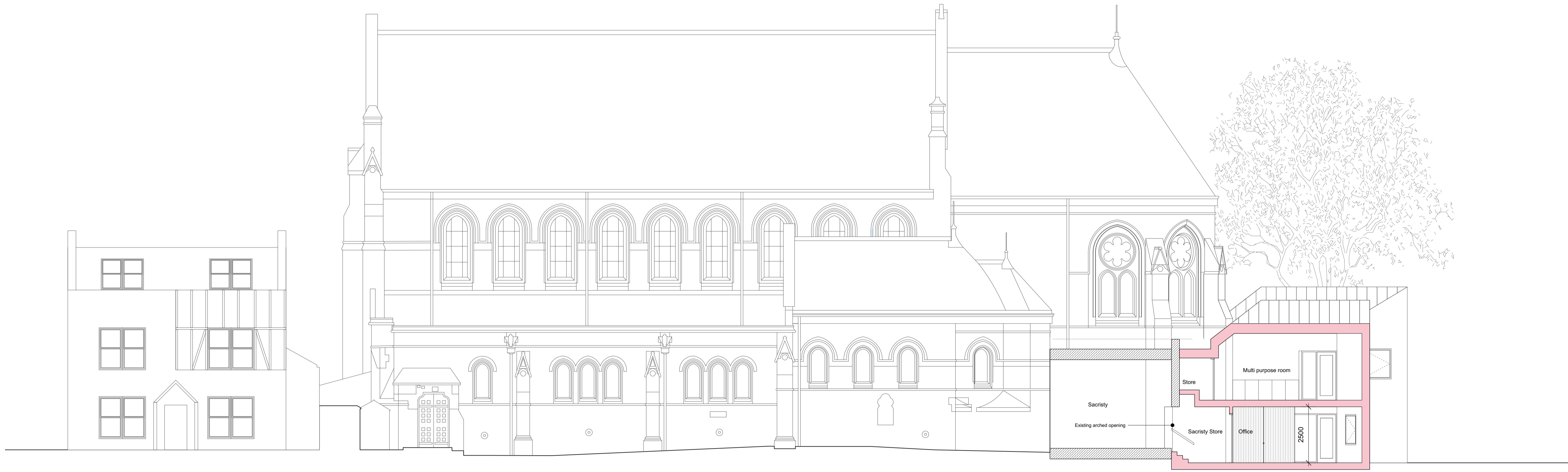
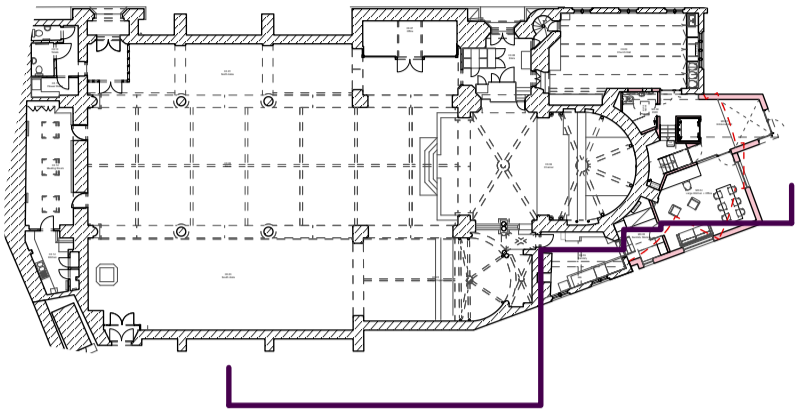


Notes



Notes

DOW JONES ARCHITECTS

10 Station Parade, Balham High Road, London, SW12 9AZ
T 020 8675 2544
mail@dowjonesarchitects.com
www.dowjonesarchitects.com

Mary's Primrose Hill

Section EE Proposed
1:100 @A1
05.10.2022
STATUS: PLANNING

430-00-351 P1

