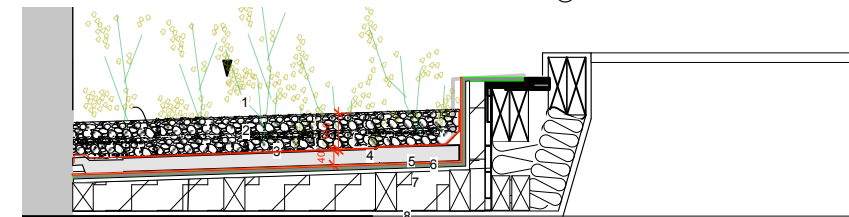
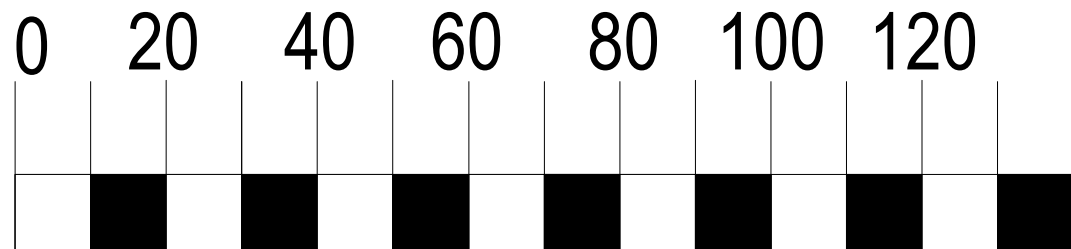


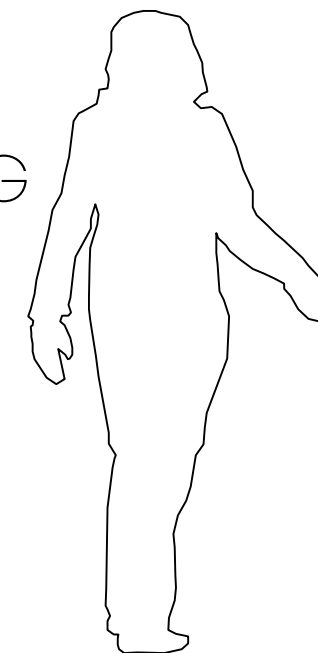
Green roof Section

1. Bauder WB wildflower blanket
2. 100mm Biodiverse substrate (FLL and GRO compliant) Lightweight growing medium manufactured to FLL guidelines.
3. 1mm Filter fleece, Polypropylene fleece to prevent substrate fines from entering the drainage element.
4. 40mm DSE 40 water retention and drainage layer - Multi-functional water storage and drainage layer.
5. 4mm Protection layer - FSM 600 protection layer
6. 10mm Bauder Total Roof system, bituminous reinforced membrane over insulation - Bauder waterproofing - SBS modified bitumen membrane reinforced with 250g/m² recycled spunbond polyester.
7. Roof deck
8. PIR insulation, laid to a 1:60 design fall on firrings
9. Plasterboard ceiling with skim finish

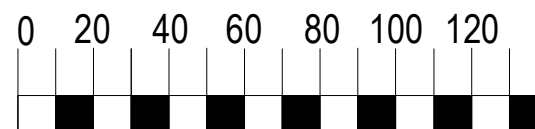
1:10



DINING



1:20



NANCY
GOULDSTONE
ARCHITECTS

The Vineyards, 36 Gloucester Ave, Primrose Hill, NW1 7BB
info@nancygouldstone.com
0207 2670024 - 0745 3291906

Project 26a Upper Park Road,
NW3

Drawing
Title Green roof detail

Scale 1:10 @ A3

Status PLANNING

Drawing
Number
Revision 138-PL-DET-01

Date 07.10.2022

Notes

NOT FOR CONSTRUCTION

Do not scale, use figured dimensions only. All dimensions must be checked on site. Inform the Architect of any discrepancies prior to construction.

Please cross reference this drawing with all related Architect's, Engineers drawings and other relevant information

Copyright
(c) 2022 Nancy Gouldstone Architects. All rights reserved
The design and drawings remain the property of Nancy Gouldstone Architects. The client for this project will be licensed to use this design and documents only upon full payment of architectural fees. This license is non-transferable. The design and drawings shall not be reproduced, up-loaded to the internet or traced without the permission of Nancy Gouldstone Architects