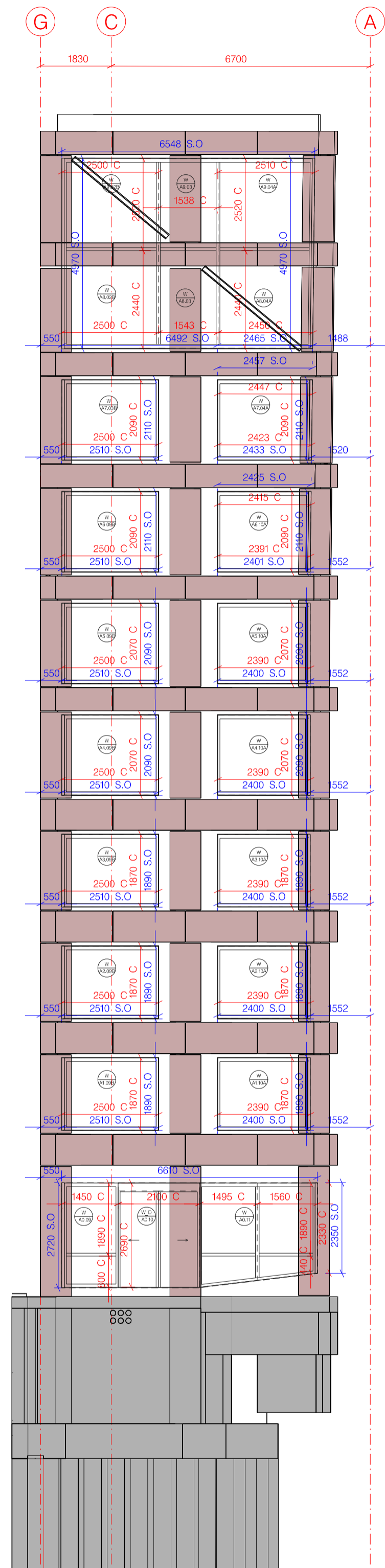
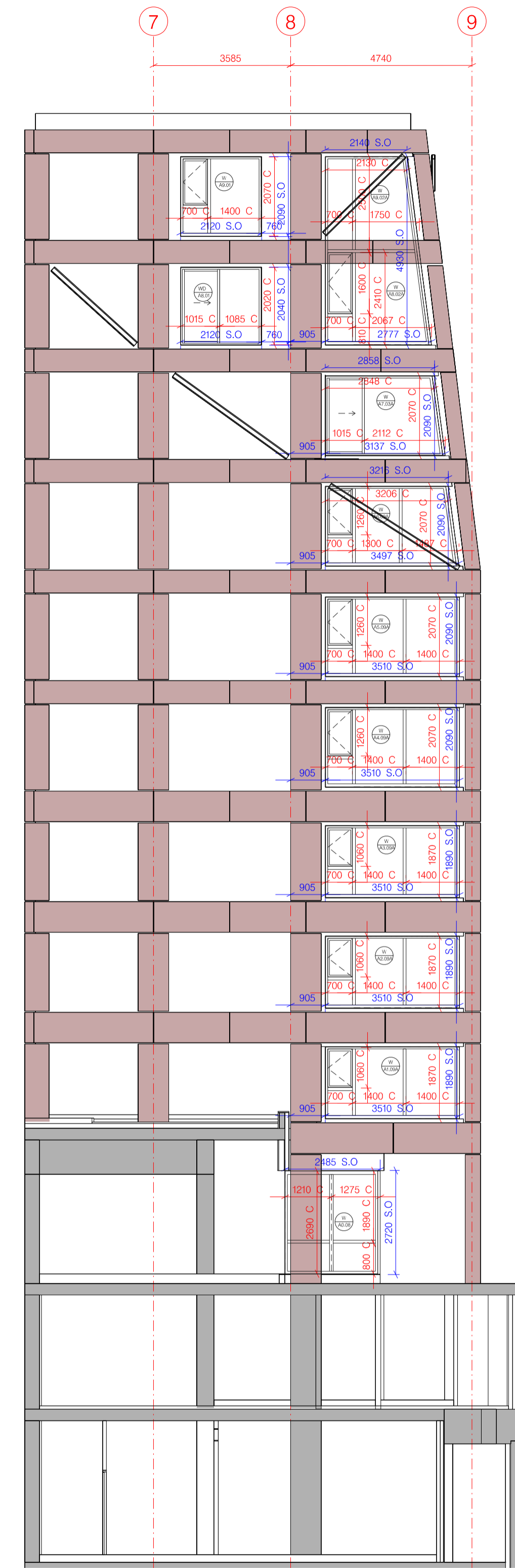


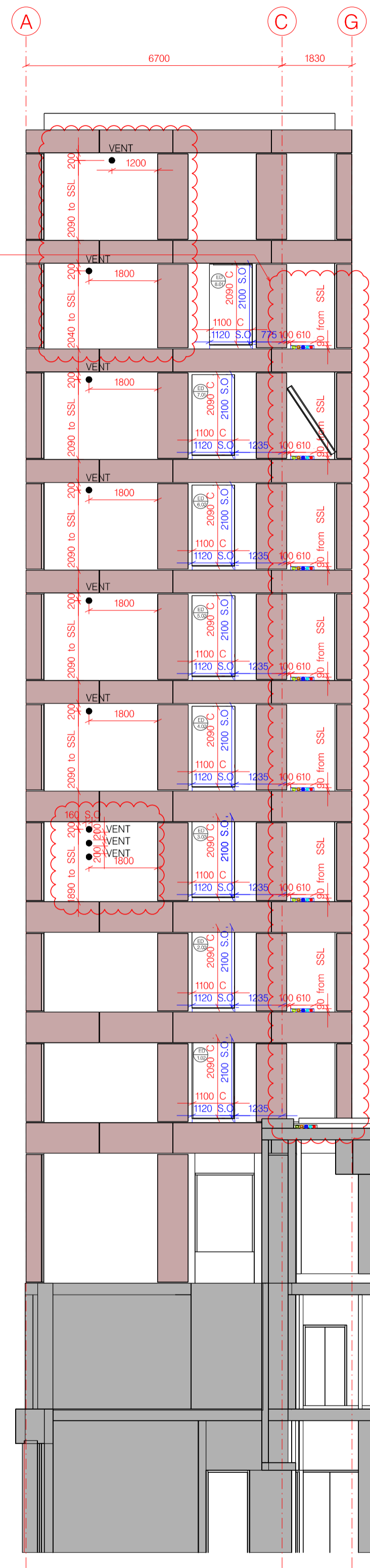
1 BLOCK A NORTH ELEVATION



2 BLOCK A EAST ELEVATION



3 BLOCK A SOUTH ELEVATION



4 BLOCK A WEST ELEVATION

Penetrations through facade for M&E from staircase in abeyance.

ROOF	FFL + 90.815m SSL + 90.510m
NINTH	FFL + 87.740m SSL + 87.620m
EIGHTH	FFL + 84.900m SSL + 84.780m
SEVENTH	FFL + 82.010m SSL + 81.890m
SIXTH	FFL + 79.120m SSL + 79.000m
FIFTH	FFL + 76.230m SSL + 76.110m
FOURTH	FFL + 73.340m SSL + 73.220m
THIRD	FFL + 70.450m SSL + 70.330m
SECOND	FFL + 67.560m SSL + 67.440m
FIRST	FFL + 64.670m SSL + 64.400m
UPPER GROUND	FFL + 60.600m SSL + 60.350m
LOWER GROUND	FFL + 57.150m SSL + 57.060m
BASEMENT	FFL + 53.260m SSL + 53.060m

NOTES:  
- All ventilation structural openings to be 160mm in diameter

REVISION	PURPOSE (S1-S2, S3, S4, S5, S6 = Stage 1, 2, 3, 4, 5, 6, I = Information, O = Comment, P = Planning, T = Tender, C = Construction)	DATE	NOTES	CLIENT	PROJECT TITLE	DRAWING TITLE	PURPOSE	SCALE A1	SCALE A3	DB	CB	DATE
C3	ISSUED FOR CONSTRUCTION	12.08.2022	1. Contractors are not to directly scale off this drawing. Dimensions should be obtained from the Engineer or Architect, site checked and any discrepancy between drawings reported.	GROUPWORK	317 FINCHLEY ROAD	BLOCK A ELEVATIONS	T	1:100	1:200	AC	AT	AUG 22
C4	ISSUED FOR CONSTRUCTION	23.08.2022										
C5	ISSUED FOR CONSTRUCTION	31.08.2022	2. The design and these drawings are the sole copyright of Amin Taha Architects, 15 Clerkenwell Close, London ECHR 0AA, T: 020 7253 9444 F: 020 7253 9555.		317 FINCHLEY ROAD, LONDON, NW3 6EP							
T1	ISSUED FOR CONSTRUCTION	03.10.2022					DRAWING NO.			240 - 1520		REVISION T1