

General Notes

This drawing is copyright of KSR architects. This drawing must be read in conjunction with the Designer's Risk Assessment, specification and all other relevant documentation and drawings.

KSR architects accept no liability for any expense, loss or damage of whatsoever nature and however arising from any variation made to this drawing or in the execution of the work to which it relates which has not been referred to them and their approval obtained.

Areas are based on uncheckered survey and are approximate only. Do not scale from this drawing or the digital files, only figure dimensions are to be used. Refer to linear scale for guidance.

Check all dimensions on site prior to carrying out any works and advise any discrepancy.



FRONT ELEVATION

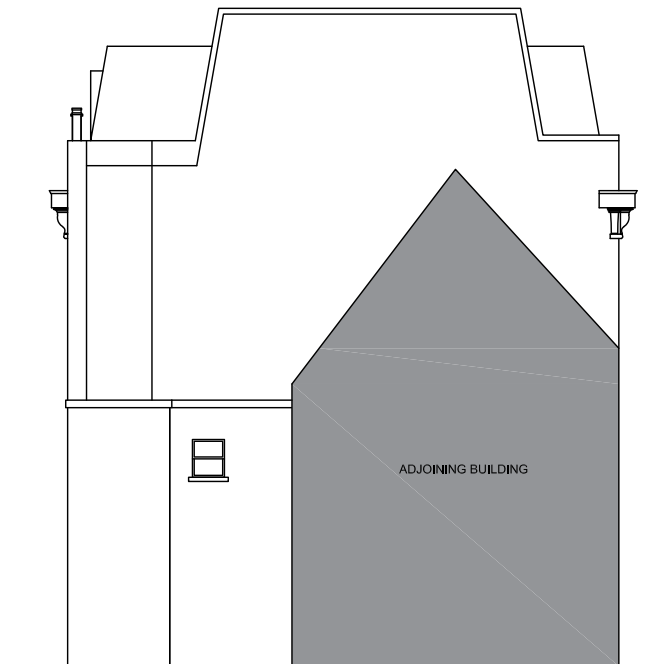


RIGHT SIDE ELEVATION

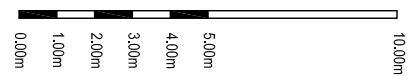
- ① Greenery to the front of a public house to be revived, enhanced and retained to provide a welcoming street presence.
- ② Roof extension with high quality architectural detailing to correspond with the rhythm and hierarchy of the existing building.
- ③ Rear parapet raised to reduce the roof extension mass and ensure no overlooking. Facade material and treatment to match existing.
- ④ Mansard set back to form an enclosed terrace with opportunities for greenery.
- ⑤ New solid double door added to improve fire safety of the premises.



REAR ELEVATION



LEFT SIDE ELEVATION



Rev	Description	Date	By
Status:			

PLANNING

KSR ARCHITECTS & INTERIOR DESIGNERS
 KSR Architects LLP
 14 Grenford Street
 London W1P 0NP

Project:

89 HOLMES ROAD

Drawing Title:

PROPOSED ELEVATIONS

Date of first issue: 23.02.2022
 Scale: 1:200 @ A3

Drawn By: LV
 Checked By: GA
 © KSR Architects

Drawing No: **21046-P-300**
 Rev: .