

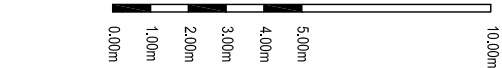
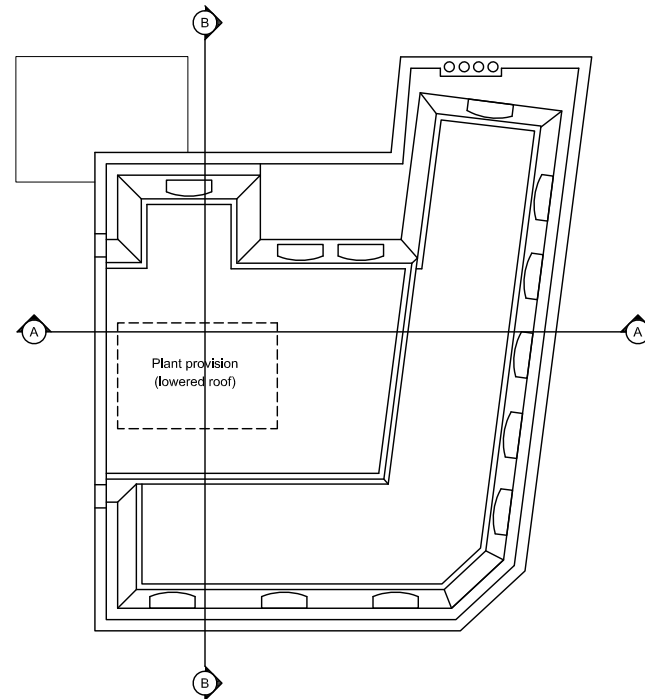
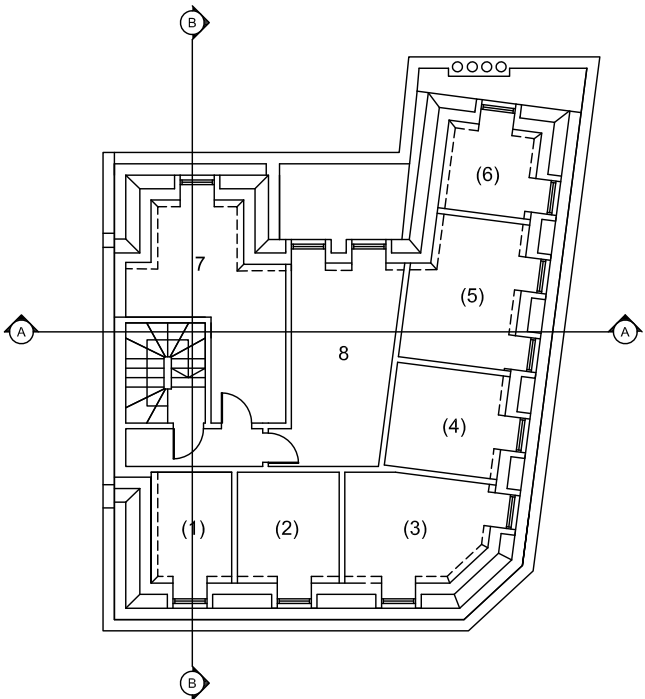
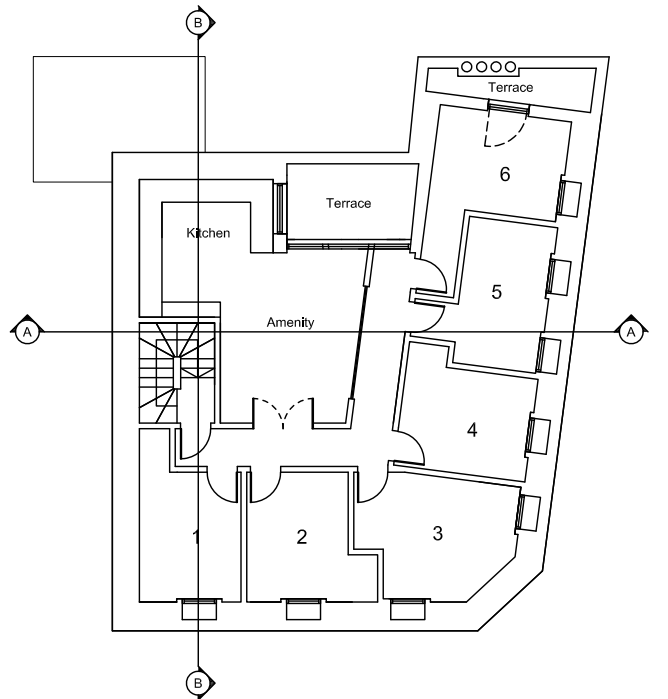
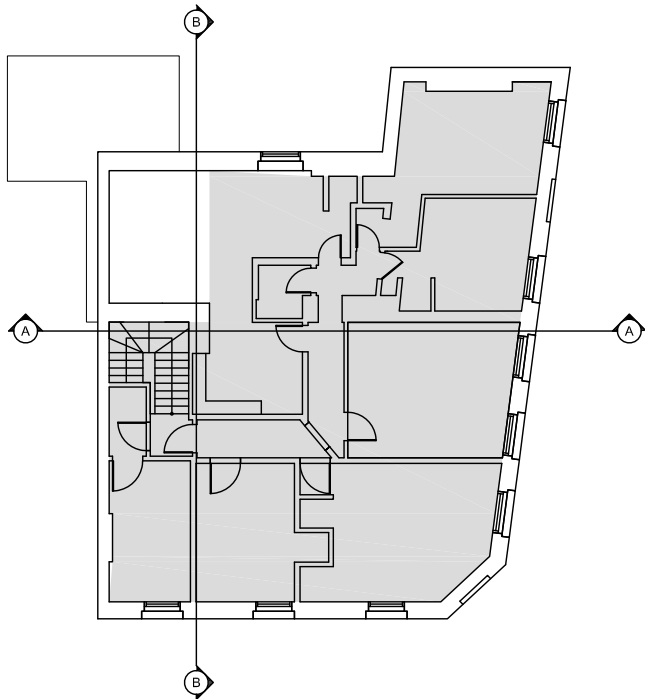
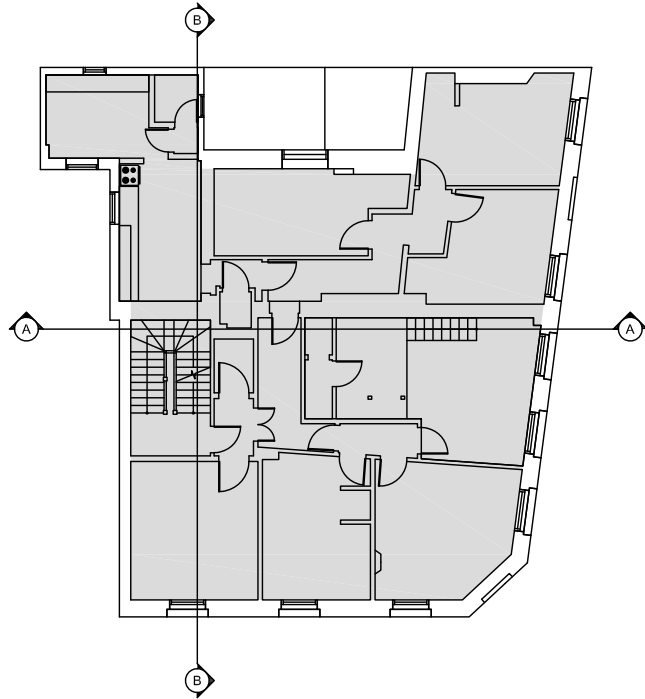
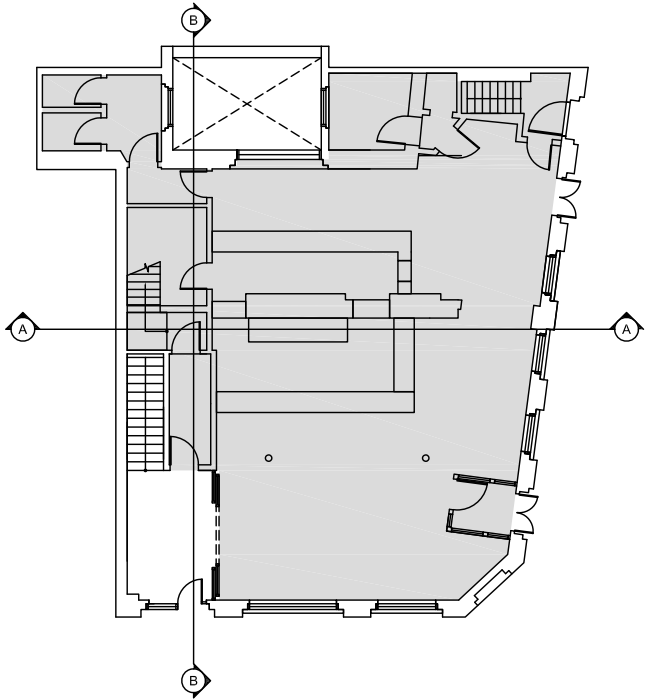
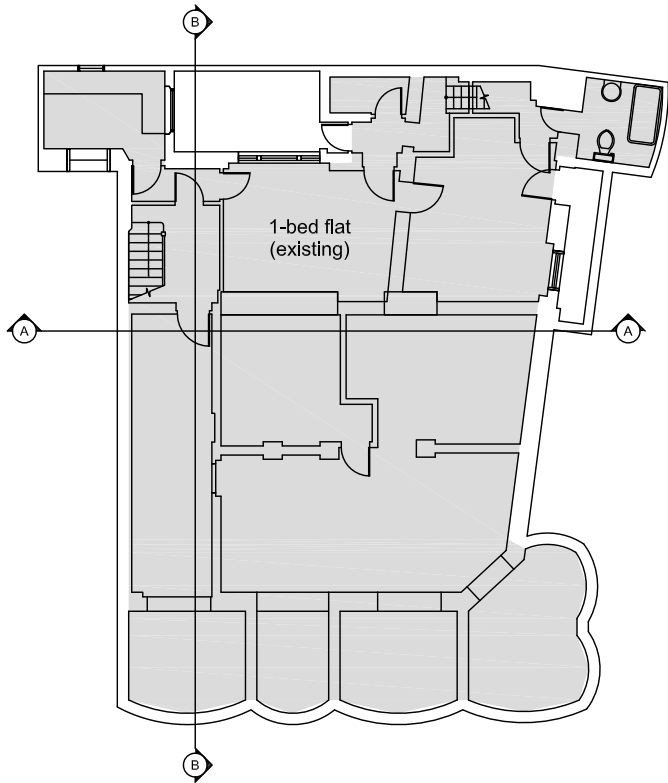
**General Notes**

This drawing is copyright of KSR architects. This drawing must be read in conjunction with the Designer's Risk Assessment, specification and all other relevant documentation and drawings.

KSR architects accept no liability for any expense, loss or damage of whatsoever nature and however arising from any variation made to this drawing or in the execution of the work to which it relates which has not been referred to them and their approval obtained.

Areas are based on uncheckered survey and are approximate only. Do not scale from this drawing or the digital data, only figure dimensions are to be used. Refer to linear scale for guidance.

Check all dimensions on site prior to carrying out any works and advise any discrepancy.



Existing retained and refurbished

Rev	Description	Date	By
Status:			

## PLANNING

**KSR ARCHITECTS & INTERIOR DESIGNERS**

KSR Architects LLP [info@ksrarchitects.com](mailto:info@ksrarchitects.com)  
14 Greenland Street E 444 (020) 7692 5000  
London NW1 0ND [www.ksrarchitects.com](http://www.ksrarchitects.com)

Project:

89 HOLMES ROAD

Drawing Title:

PROPOSED PLANS

Date of first issue: 10.08.2022 Scale: 1:200 @ A3

Drawn By: LV Checked By: GA © KSR Architects

Drawing No: 21046-P-100 Rev: .