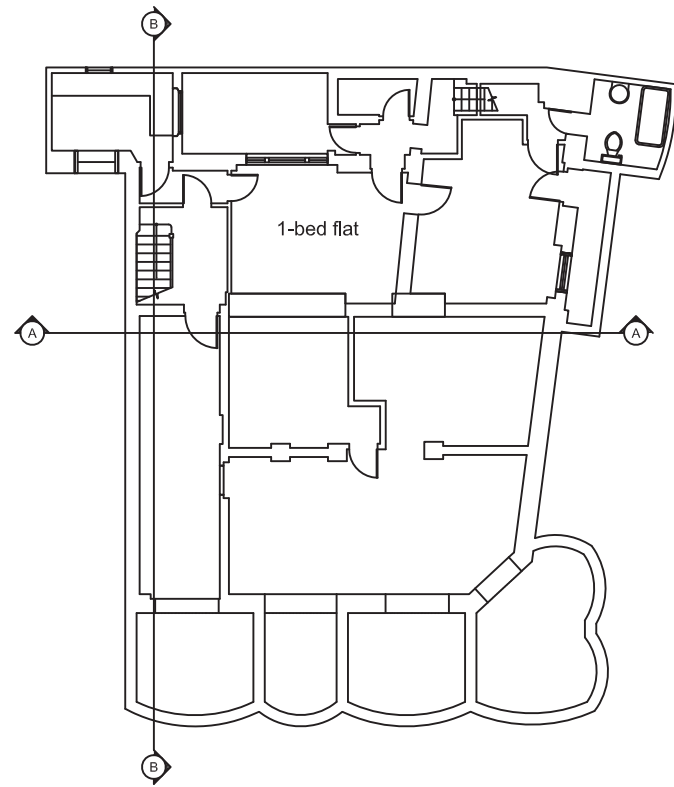
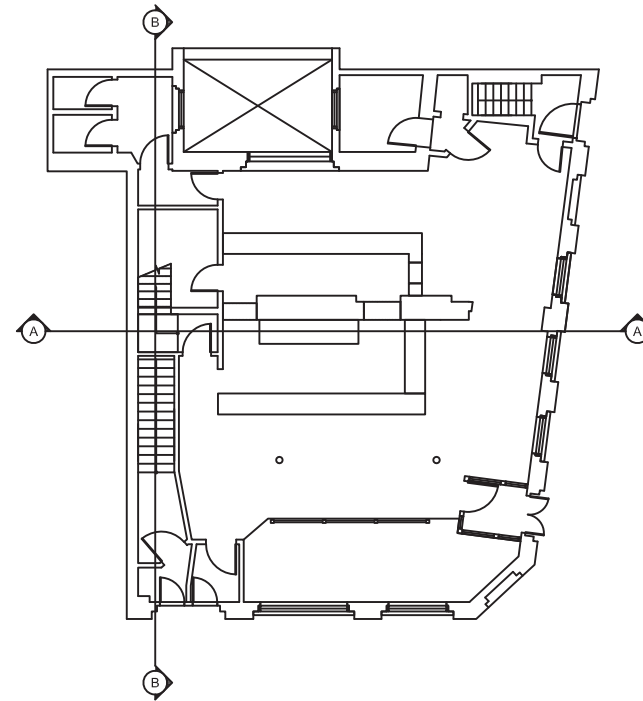


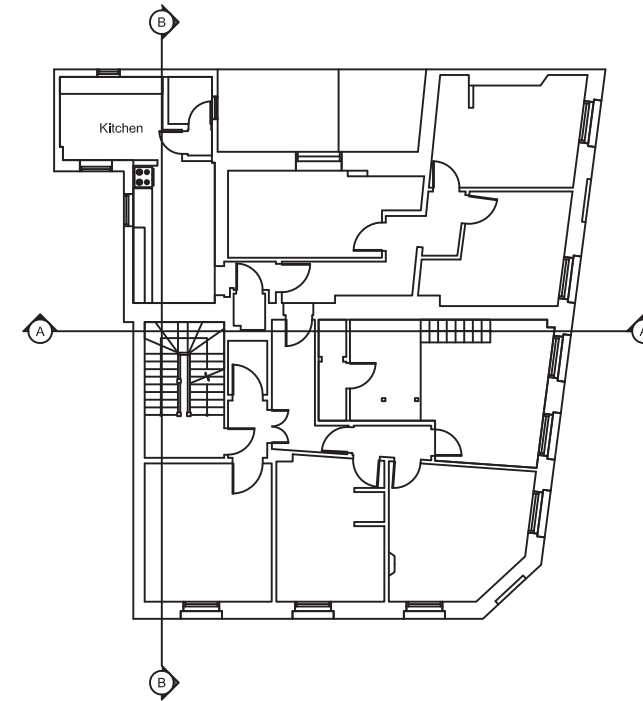
General Notes
 This drawing is copyright of KSR architects. This drawing must be read in conjunction with the Designer's Risk Assessment, specification and all other relevant documentation and drawings.
 KSR architects accept no liability for any expense, loss or damage of whatsoever nature and however arising from any variation made to this drawing or in the execution of the work to which it relates which has not been referred to them and their approval obtained.
 Areas are based on uncheckered survey and are approximate only. Do not scale from this drawing or the digital data, only figured dimensions are to be used. Refer to linear scale for guidance.
 Check all dimensions on site prior to carrying out any works and advise any discrepancy.



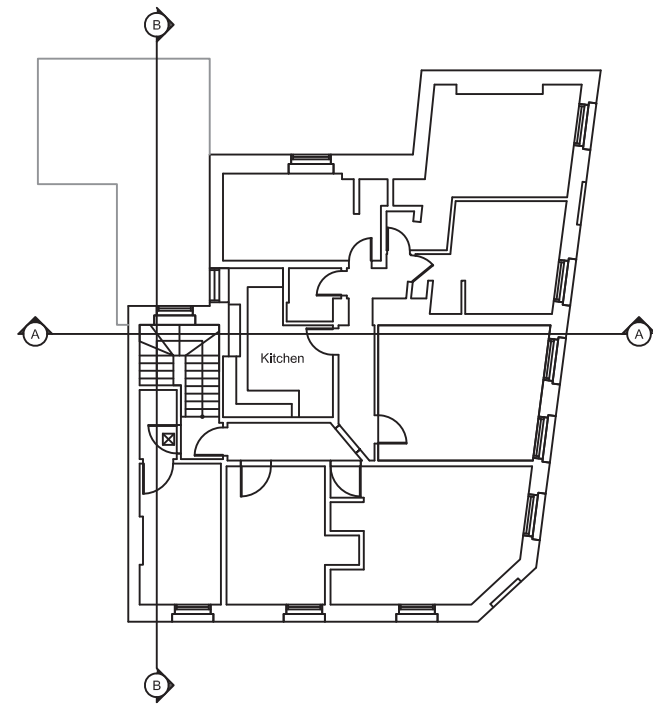
LOWER GROUND FLOOR



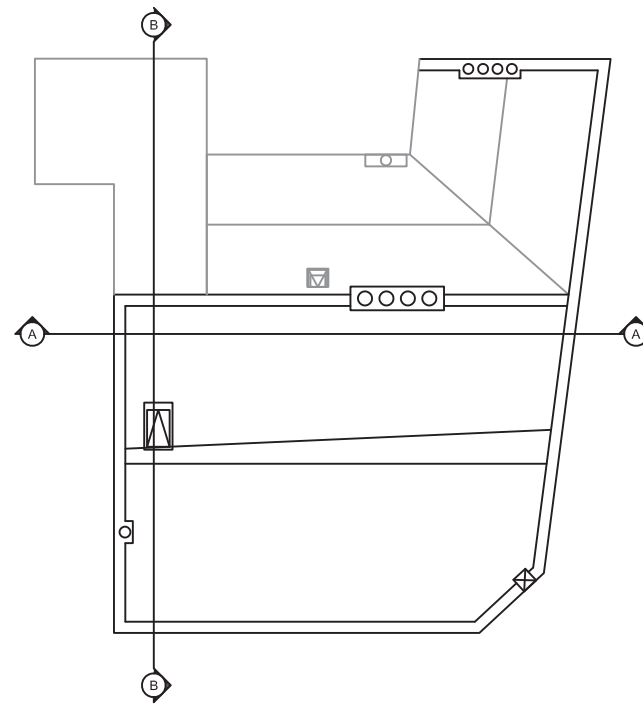
GROUND FLOOR



FIRST FLOOR



SECOND FLOOR



ROOF

Rev	Description	Date	By
Status:			

PLANNING

KSR ARCHITECTS & INTERIOR DESIGNERS
 KSR Architects LLP info@ksrarchitects.com
 14 Gower Street E 44 (0)20 7616 9000
 London NW1 0ND www.ksrarchitects.com

Project:

89 HOLMES ROAD

Drawing Title:

EXISTING PLANS

Date of first issue: 11.03.2022 Scale: 1:200 @ A3

Drawn By: LV Checked By: GA © KSR Architects

Drawing No: **21046-E-100** Rev: .