

# PROPOSED EXTERIOR ELEVATIONS\_OPTION 1

1 No. DOUBLE SIDED PROJECTING SIGN, INTERNALLY ILLUMINATED.

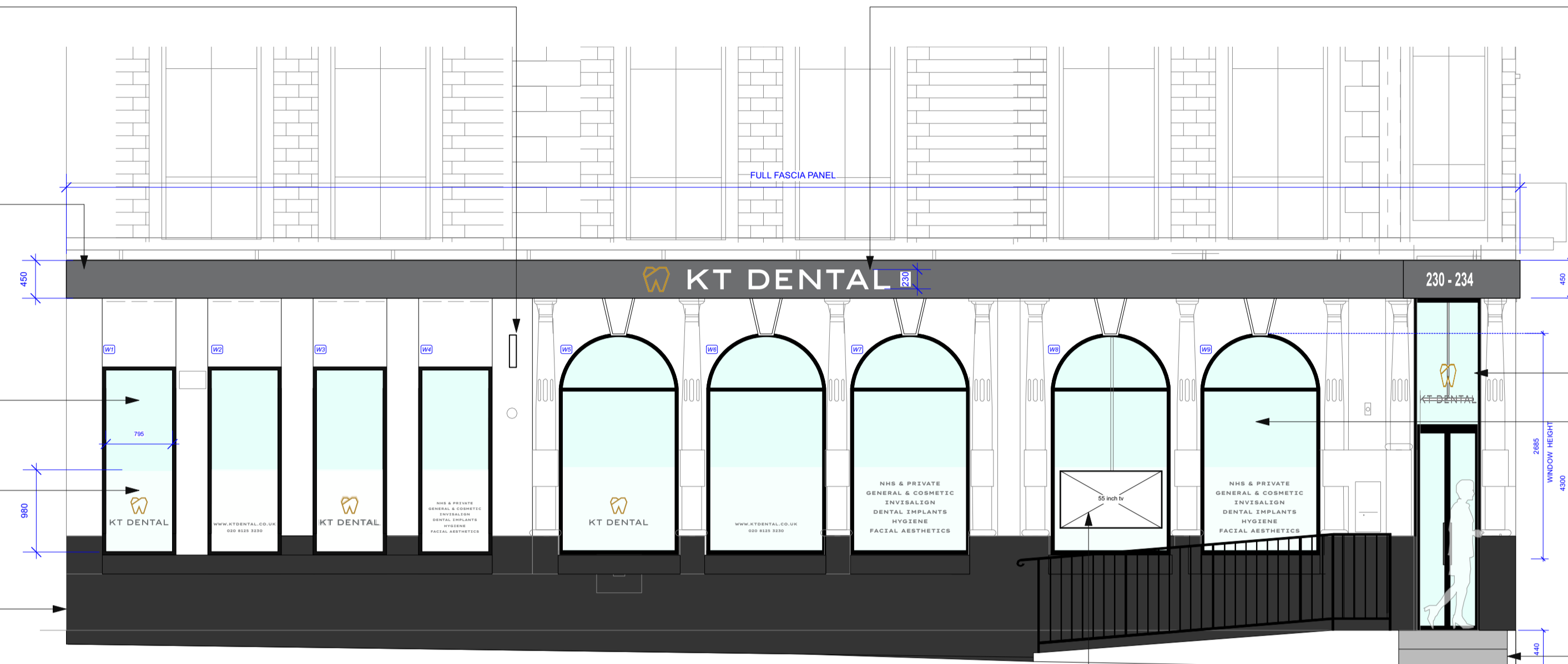
EXISTING FACADE TO BE MADE GOOD & RE-PAINTED WHITE.

REPLACE EXISTING WITH NEW RECTANGULAR WINDOWS. UPVC BLACK FRAME. HEIGHT TO BE CONFIRMED

VENTILATION GRILLS MAY BE REQUIRED ABOVE W1-4 FOR INPUT AND EXHAUST AIR FROM THE VENTILATION SYSTEM.

FROSTED VINYL INTERNALLY APPLIED TO ALL WINDOWS. LOGO VINYL OR TEXT APPLIED TO LOWER PART OF GLAZING

EXISTING GRANITE TO BE CLEANED & MADE GOOD.



**ELEVATION A-A, 1:50 @ A1**  
KENTISH TOWN ROAD

LOCATED CENTRALLY ABOVE CENTRAL 3 X ARCH WINDOWS.

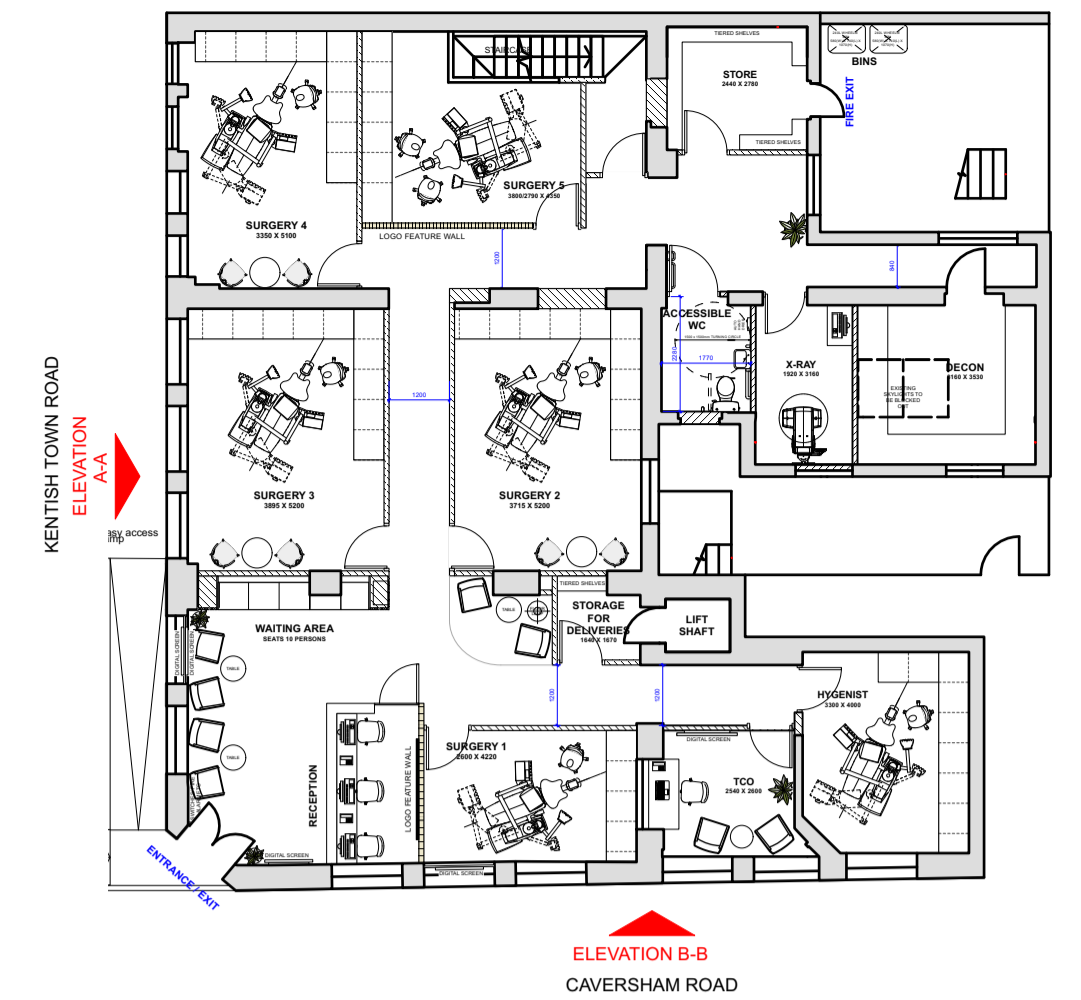
NEW FASCIA PANEL, WHITE POWDERCOATED ALUMINIUM PANEL WITH HALO ILLUMINATED LOGO & LETTERS PUSHED THROUGH FASCIA PANEL.

NEW MAIN ENTRANCE WITH DOUBLE DOORS. BLACK FRAME & GLAZING WITH GLAZED PANEL ABOVE. INTERNALLY SUSPENDED ILLUMINATED SIGN.

REPLACE EXISTING ARCH WINDOWS WITH NEW BLACK FRAME & GLAZING. APPLY FROSTED VINYL TO LOWER PART OF GLAZING

EXISTING RAMP SIDE WALL & RETURN WALL CLEANED, MADE GOOD AND PAINTED WHITE.

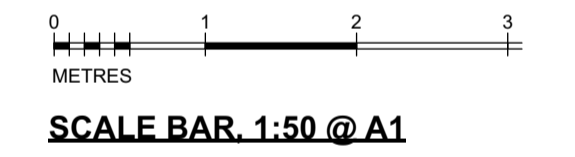
TV SCREEN (DOUBLE SIDED) INTERNALLY SUSPENDED. LOCATION TBC ON SITE. FROSTED VINYL SURROUND TO TV.



**PROPOSED KEY PLAN, 1:150 @ A1**

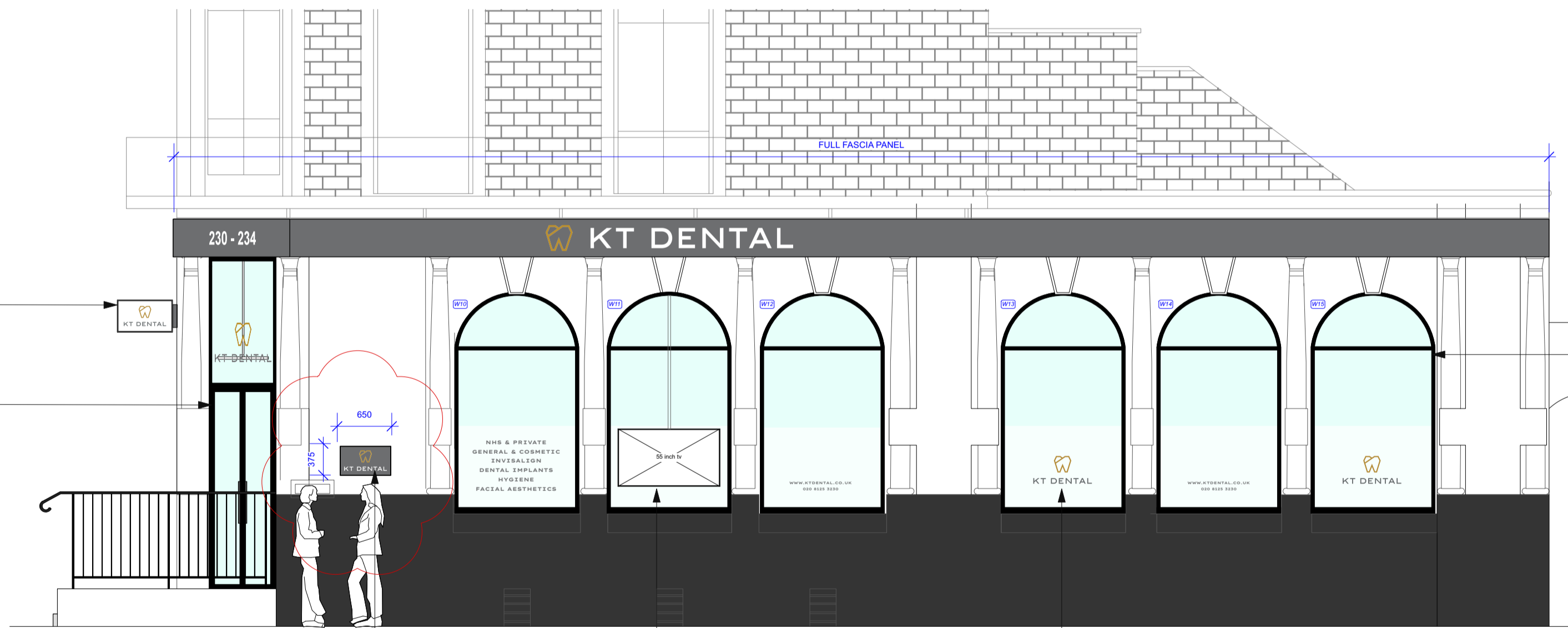
ITEM	QUANTITY
REPLACEMENT OF MAIN ENTRANCE	1
REPLACEMENT OF EXISTING LARGE ARCH WINDOWS	11
REPLACEMENT OF EXISTING RECTANGULAR WINDOWS WITH ARCH WINDOWS	4
FULL LENGTH FASCIA SIGN WITH 2 x ILLUMINATED LOGO & LETTERS	AS SHOWN
FASCIA WITH WHITE VINYL TEXT ABOVE ENTRANCE (230-234)	1
INTERNALLY SUSPENDED ENTRANCE ILLUMINATED SIGN	1
WALL MOUNTED SIGN (ELEV B) WITH ILLUMINATED LOGO & LETTERS	1

**WINDOWS DO NOT REQUIRE TO BE OPENED.**



1 No. DOUBLE SIDED PROJECTING SIGN, INTERNALLY ILLUMINATED. TOP OF SIGN

NEW MAIN ENTRANCE WITH DOUBLE DOORS. BLACK FRAME & GLAZING WITH GLAZED PANEL ABOVE. INTERNALLY SUSPENDED ILLUMINATED SIGN.



**ELEVATION B-B, 1:50 @ A1**  
CAVERSHAM ROAD

REPLACE EXISTING ARCH WINDOWS WITH NEW BLACK FRAME & GLAZING. APPLY FROSTED VINYL TO LOWER PART OF GLAZING

APPLY LOGO VINYL TO LOWER PART OF GLAZING (APPLIED ON INSIDE) HEIGHT APPROX 330mm.

INTERNALLY SUSPENDED TV SCREEN FACING STREET. ALL CABLES TO BE CONCEALED. FROSTED VINYL SURROUND TO TV.

WALL MOUNTED RECTANGULAR SIGNAGE PANEL NON-ILLUMINATED



l. +44 (0)20 7504 7115  
e. hello@brace-studio.com  
w. www.brace-studio.com

This drawing is the property of Brace Studio. Copyright is reserved by Brace Studio and is issued on the condition that it is not copied or disclosed by or to any unauthorised persons without prior written consent from Brace Studio.

This drawing is for design intent only and should not be scaled. No responsibility is accepted for errors and/or omissions arising from the adoption of this drawn information by others. The contractor should check all dimensions on site and report to Brace Studio should any discrepancy become apparent. It remains the responsibility of the user of this drawing to ensure all materials identified comply with Building Control and Fire Officer requirements.

Revision	Date	Description	Revision	Date	Description
Rev A	10.08.2022	HALO ILLUMINATED LETTERS NOTATION UPDATE			
Rev B	11.08.2022	EXISTING ELEVATION ADDED. GENERAL NOTATION UPDATE			
Rev C	28.09.2022	OPTION 1 WITH ARCHWAY WINDOWS FOR WINDOWS 1 - 4 REMOVED. GENERAL NOTATION UPDATE			
Rev D	03.10.2022	FASCIA PANEL REDUCED IN LENGTH. ELEV B WALL MOUNTED SIGN REDUCED IN SIZE			

Scale	As shown @ A1
Drawn by	
Date	03.10.2022

Drawing Title	EXTERIOR ELEVATIONS - 2
Project	230-234 Kentish Town Road
Client	KT DENTAL

Job Number	090
Drawing Number	01-02
Revision	D

# PROPOSED EXTERIOR ELEVATIONS\_OPTION 2

1 No. DOUBLE SIDED PROJECTING SIGN, INTERNALLY ILLUMINATED.

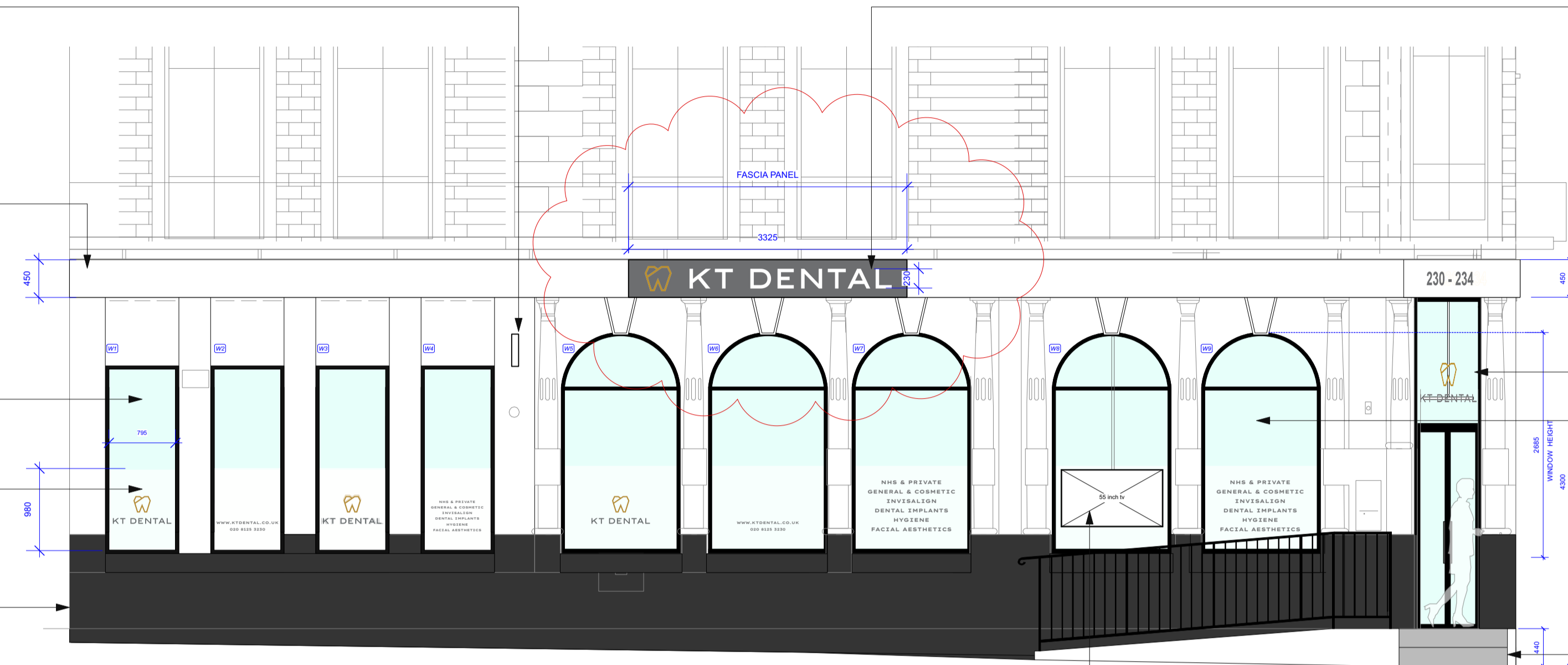
EXISTING FACADE TO BE MADE GOOD & RE-PAINTED WHITE.

REPLACE EXISTING WITH NEW RECTANGULAR WINDOWS. UPVC BLACK FRAME. HEIGHT TO BE CONFIRMED

VENTILATION GRILLS MAY BE REQUIRED ABOVE W1-4 FOR INPUT AND EXHAUST AIR FROM THE VENTILATION SYSTEM.

FROSTED VINYL INTERNALLY APPLIED TO ALL WINDOWS. LOGO VINYL OR TEXT APPLIED TO LOWER PART OF GLAZING

EXISTING GRANITE TO BE CLEANED & MADE GOOD.



**ELEVATION A-A, 1:50 @ A1**  
KENTISH TOWN ROAD

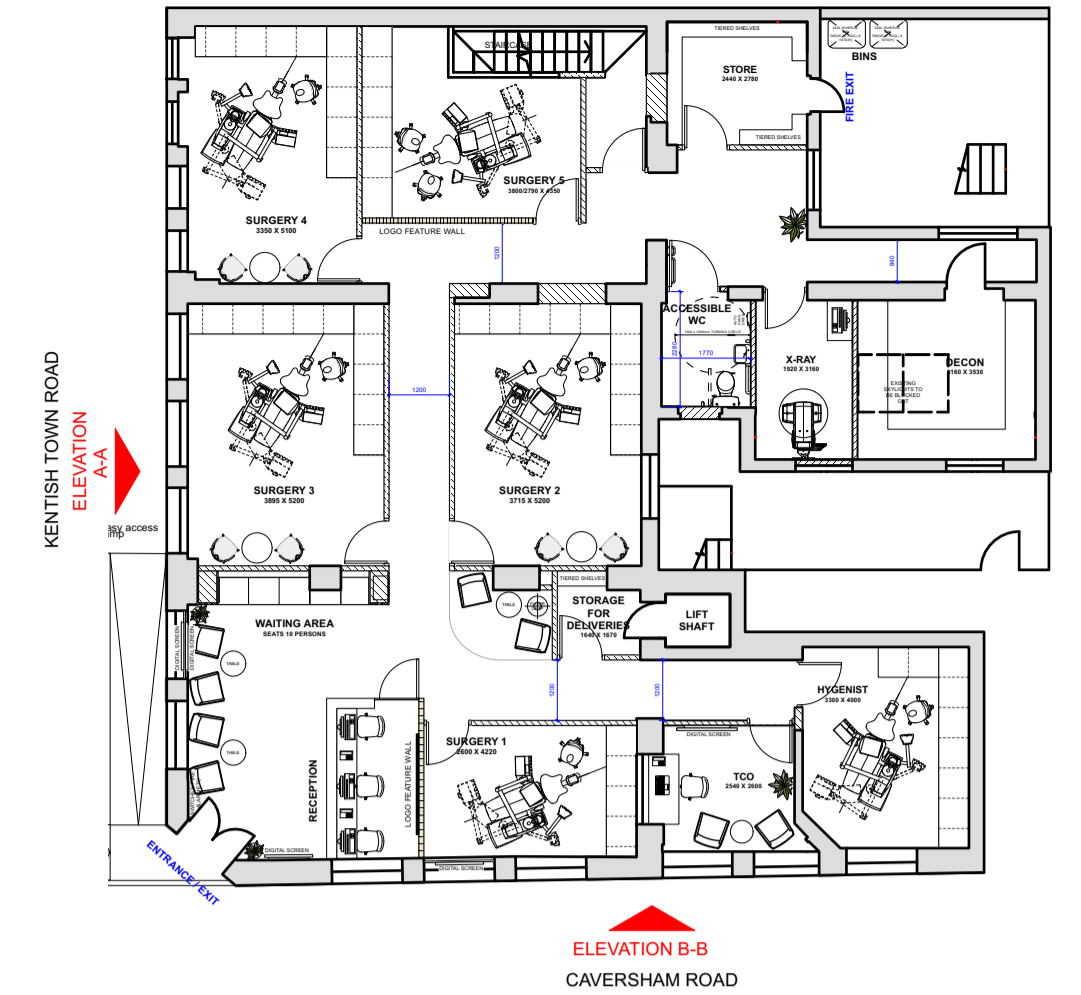
LOCATED CENTRALLY ABOVE CENTRAL 3 X ARCH WINDOWS.  
NEW FASCIA PANEL, WHITE POWDERCOATED ALUMINIUM PANEL WITH HALO ILLUMINATED LOGO & LETTERS PUSHED THROUGH FASCIA PANEL.

NEW MAIN ENTRANCE WITH DOUBLE DOORS. BLACK FRAME & GLAZING WITH GLAZED PANEL ABOVE.  
INTERNALLY SUSPENDED ILLUMINATED SIGN.

REPLACE EXISTING ARCH WINDOWS WITH NEW BLACK FRAME & GLAZING.  
APPLY FROSTED VINYL TO LOWER PART OF GLAZING

EXISTING RAMP SIDE WALL & RETURN WALL CLEANED, MADE GOOD AND PAINTED WHITE.

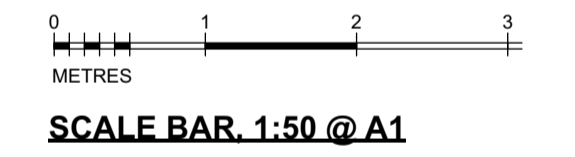
TV SCREEN (DOUBLE SIDED) INTERNALLY SUSPENDED. LOCATION TBC ON SITE.  
FROSTED VINYL SURROUND TO TV.



**PROPOSED KEY PLAN, 1:150 @ A1**

ITEM	QUANTITY
REPLACEMENT OF MAIN ENTRANCE	1
REPLACEMENT OF EXISTING LARGE ARCH WINDOWS	11
REPLACEMENT OF EXISTING RECTANGULAR WINDOWS WITH ARCH WINDOWS	4
FULL LENGTH FASCIA SIGN WITH 2 x ILLUMINATED LOGO & LETTERS	AS SHOWN
FASCIA WITH WHITE VINYL TEXT ABOVE ENTRANCE (230-234)	1
INTERNALLY SUSPENDED ENTRANCE ILLUMINATED SIGN	1
WALL MOUNTED SIGN (ELEV B) WITH ILLUMINATED LOGO & LETTERS	1

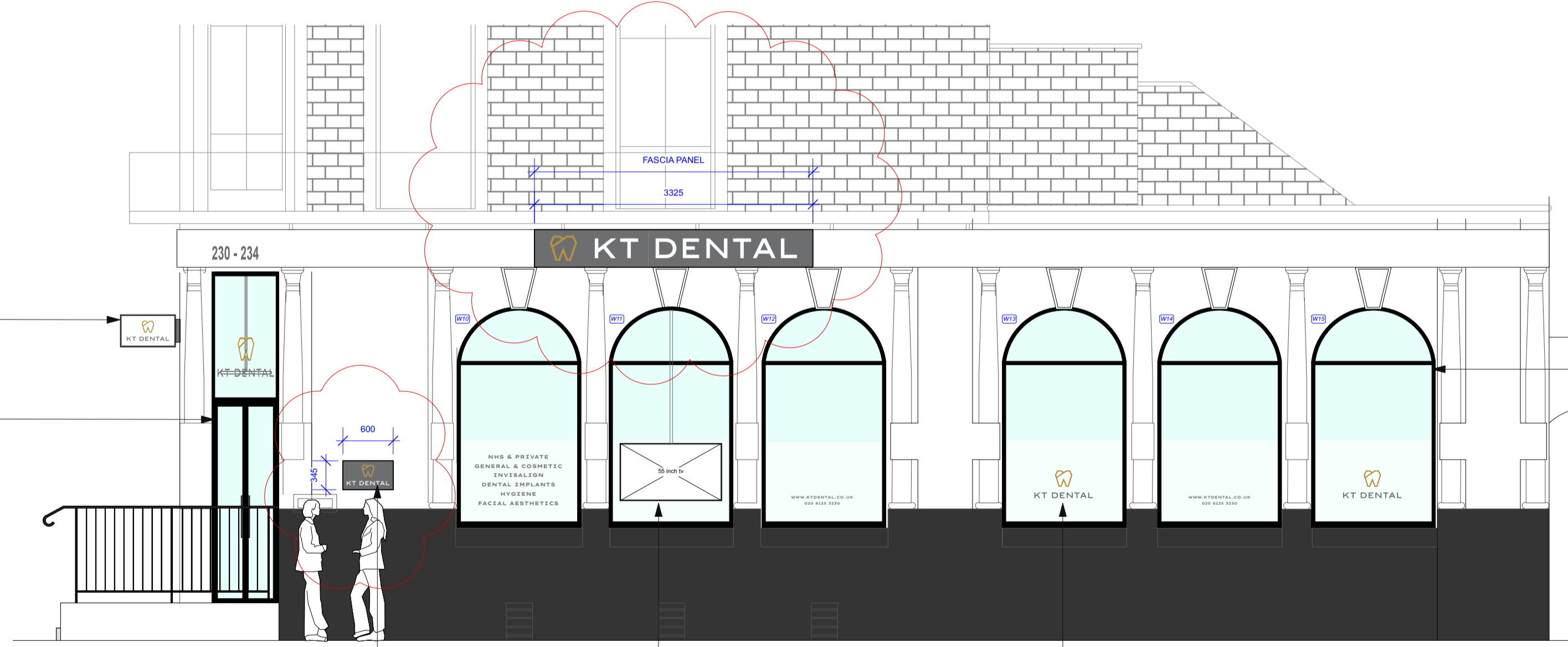
**WINDOWS DO NOT REQUIRE TO BE OPENED.**



**SCALE BAR, 1:50 @ A1**

1 No. DOUBLE SIDED PROJECTING SIGN, INTERNALLY ILLUMINATED. TOP OF SIGN

NEW MAIN ENTRANCE WITH DOUBLE DOORS. BLACK FRAME & GLAZING WITH GLAZED PANEL ABOVE.  
INTERNALLY SUSPENDED ILLUMINATED SIGN.



**ELEVATION B-B, 1:50 @ A1**  
CAVERSHAM ROAD

REPLACE EXISTING ARCH WINDOWS WITH NEW BLACK FRAME & GLAZING.  
APPLY FROSTED VINYL TO LOWER PART OF GLAZING

APPLY LOGO VINYL TO LOWER PART OF GLAZING (APPLIED ON INSIDE) HEIGHT APPROX 330mm.

INTERNALLY SUSPENDED TV SCREEN FACING STREET. ALL CABLES TO BE CONCEALED.  
FROSTED VINYL SURROUND TO TV.

WALL MOUNTED RECTANGULAR SIGNAGE PANEL NON-ILLUMINATED



t. +44 (0)20 7504 7115  
e. hello@brace-studio.com  
w. www.brace-studio.com

This drawing is the property of Brace Studio. Copyright is reserved by Brace Studio and is issued on the condition that it is not copied or disclosed by or to any unauthorised persons without prior written consent from Brace Studio.

This drawing is for design intent only and should not be scaled. No responsibility is accepted for errors and/or omissions arising from the adoption of this drawn information by others. The contractor should check all dimensions on site and report to Brace Studio should any discrepancy become apparent. It remains the responsibility of the user of this drawing to ensure all materials identified comply with Building Control and Fire Officer requirements.

Revision	Date	Description	Revision	Date	Description
Rev A	10.08.2022	HALO ILLUMINATED LETTERS NOTATION UPDATE			
Rev B	11.08.2022	EXISTING ELEVATION ADDED. GENERAL NOTATION UPDATE			
Rev C	28.09.2022	OPTION 1 WITH ARCHWAY WINDOWS FOR WINDOWS 1 - 4 REMOVED. GENERAL NOTATION UPDATE			
Rev D	03.10.2022	FASCIA PANEL REDUCED IN LENGTH. ELEV B WALL MOUNTED SIGN REDUCED IN SIZE			

Scale	As shown @ A1
Drawn by	
Date	03.10.2022

Drawing Title	EXTERIOR ELEVATIONS - 2
Project	230-234 Kentish Town Road
Client	KT DENTAL

Job Number	090
Drawing Number	01-02
Revision	D