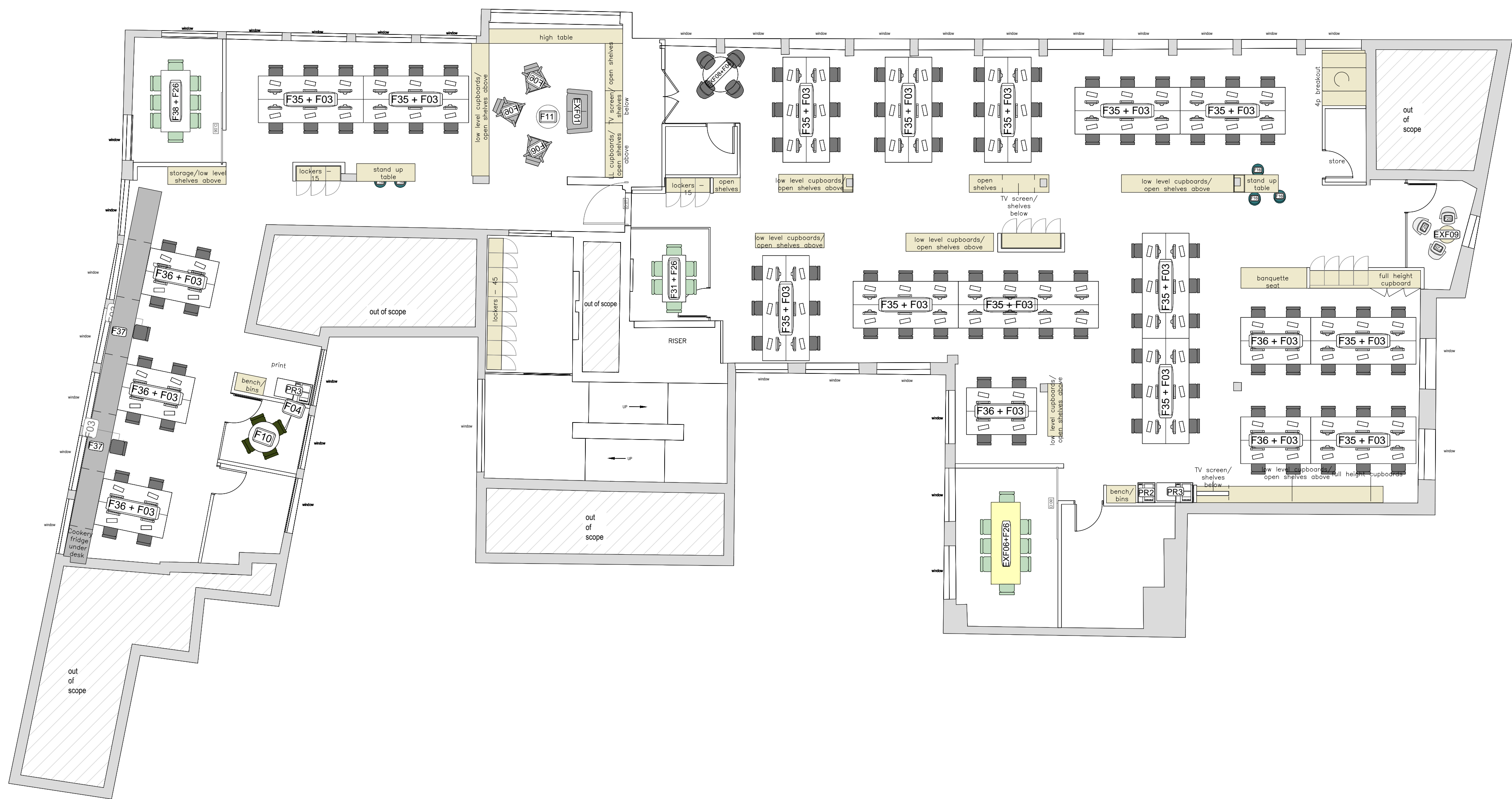
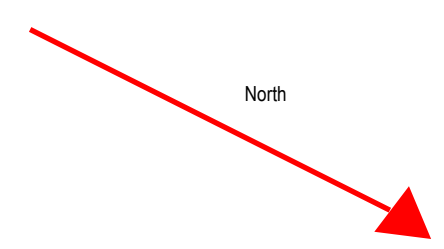


0 1000 2000 3000 4000 5000 6000 7000 8000 9000 10000

SCALE BAR IN mm

DO NOT SCALE ANY DIMENSIONS OFF THIS DRAWING. ANY DISCREPANCIES BETWEEN THIS DRAWING AND OTHER INFORMATION ARE TO BE REFERRED TO FABRIC (EU) LIMITED WHERE THE DRAWING RELATES TO AN EXISTING BUILDING OR COMPLETED CONSTRUCTION THE CONTRACTOR IS RESPONSIBLE FOR CHECKING THAT THERE IS NO CONFLICT BETWEEN ACTUAL BUILDING DIMENSIONS AND DRAWING DIMENSIONS. IN THE EVENT OF DISCREPANCIES BETWEEN THIS DRAWING AND SUBCONTRACTOR'S APPROVED WORKING DRAWINGS FOR RELEVANT BUILDING COMPONENTS, THE SUBCONTRACTOR'S DRAWING SHALL TAKE PRECEDENCE. ANY CONFLICTS ARISING OUT OF INFORMATION AS NOTED ABOVE MUST BE REPORTED IMMEDIATELY TO FABRIC (EU) LIMITED. THIS DRAWING IS THE COPYRIGHT OF FABRIC (EU) LIMITED. ALL DIMENSIONS ARE IN MILLIMETRES UNLESS OTHERWISE STATED.



Scale 1:50

Existing Layout

AB1 17.08.14 AS BUILTS
REV DATE PURPOSE OF ISSUE

CLIENT BAUER MEDIA
PROJECT ACADEMIC HOUSE
24-28 OVAL ROAD, CAMDEN
DRAWING FURNITURE AND JOINERY PLAN
FIFTH FLOOR

SCALE A1 @ 1:100
CAD FILE 9100-DRG-(72)105.dwg
DRAWN AJ
CHECKED IMRV

STATUS
 PRELIMINARY
 TENDER
 CONSTRUCTION
 AS BUILT

DRAWING NO. 9100-DRG-(72)105.REV.AB1

FABRIC
INTERIOR DESIGN + ARCHITECTURE
Fabric (eu) Ltd
179 Southway, Bridge Road
London SE1 0ED
T 020 7407 6395
E contact@fabric.eu.com
www.fabric.eu.com