

THE HEAL'S BUILDING

Sixth Floor Internal Alterations
Design & Access Statement

Rev. 01

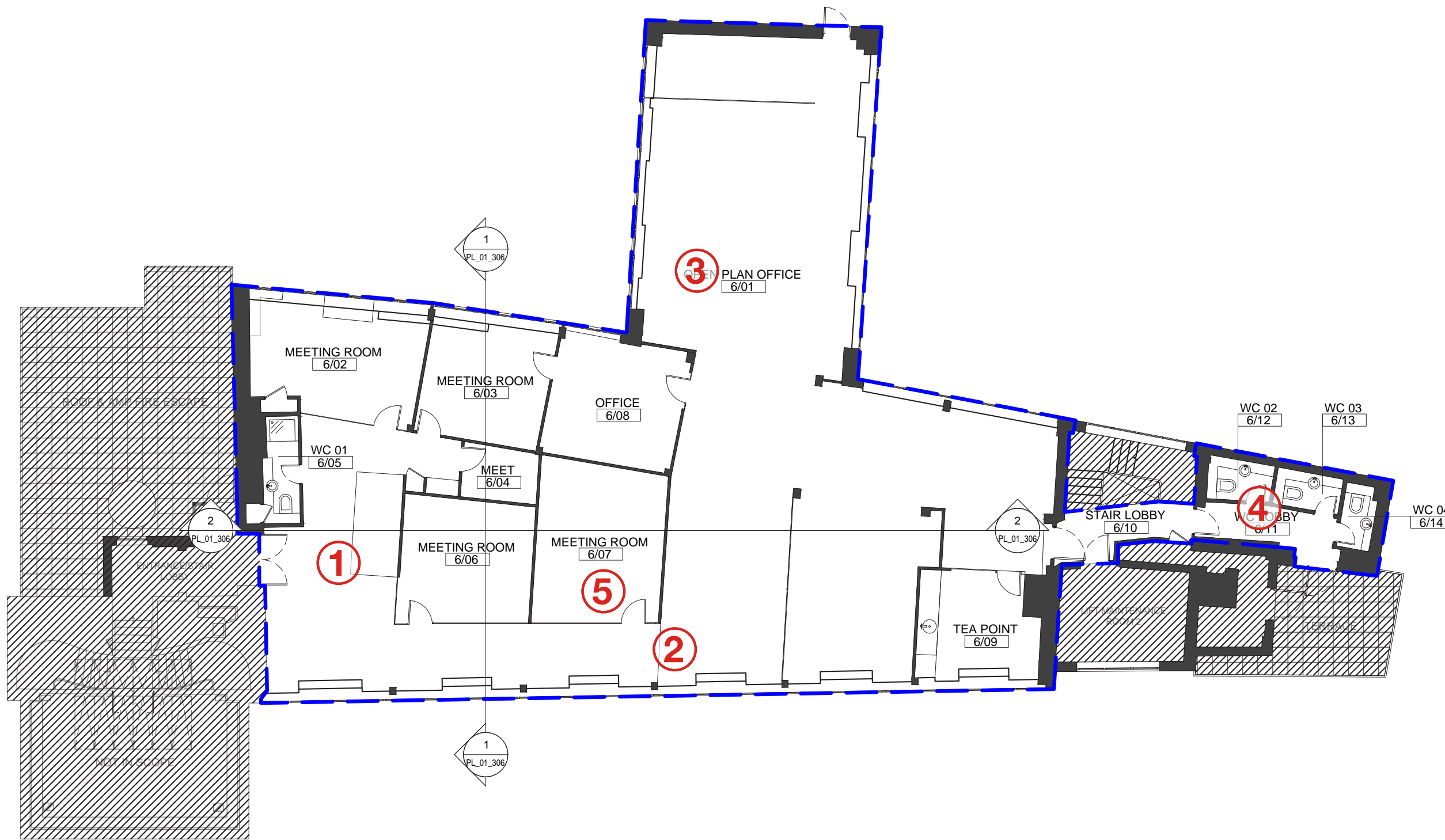
WHITE
RED
ARCHITECTS

GENERAL
PROJECTS

6th Floor Plan - Existing

Internal alterations

KEY
 [Hatched Box] Not part of scope
 [Blue Outline Box] *Level 06 - Office refurbishment scope
 Application site boundary area = approx 388sqm



The existing 6th floor office space is segregated by multiple meeting rooms, reducing the amount of natural light. Removal of meeting rooms to provide a flexible workspace alongside a sensitive upgrade to the latest market expectations and aligned with office refurbishment at floor levels below.



Existing reception entrance to 6th floor office.



Existing perimeter corridor around meeting rooms.



Existing radiator covers.







Existing WC facilities.

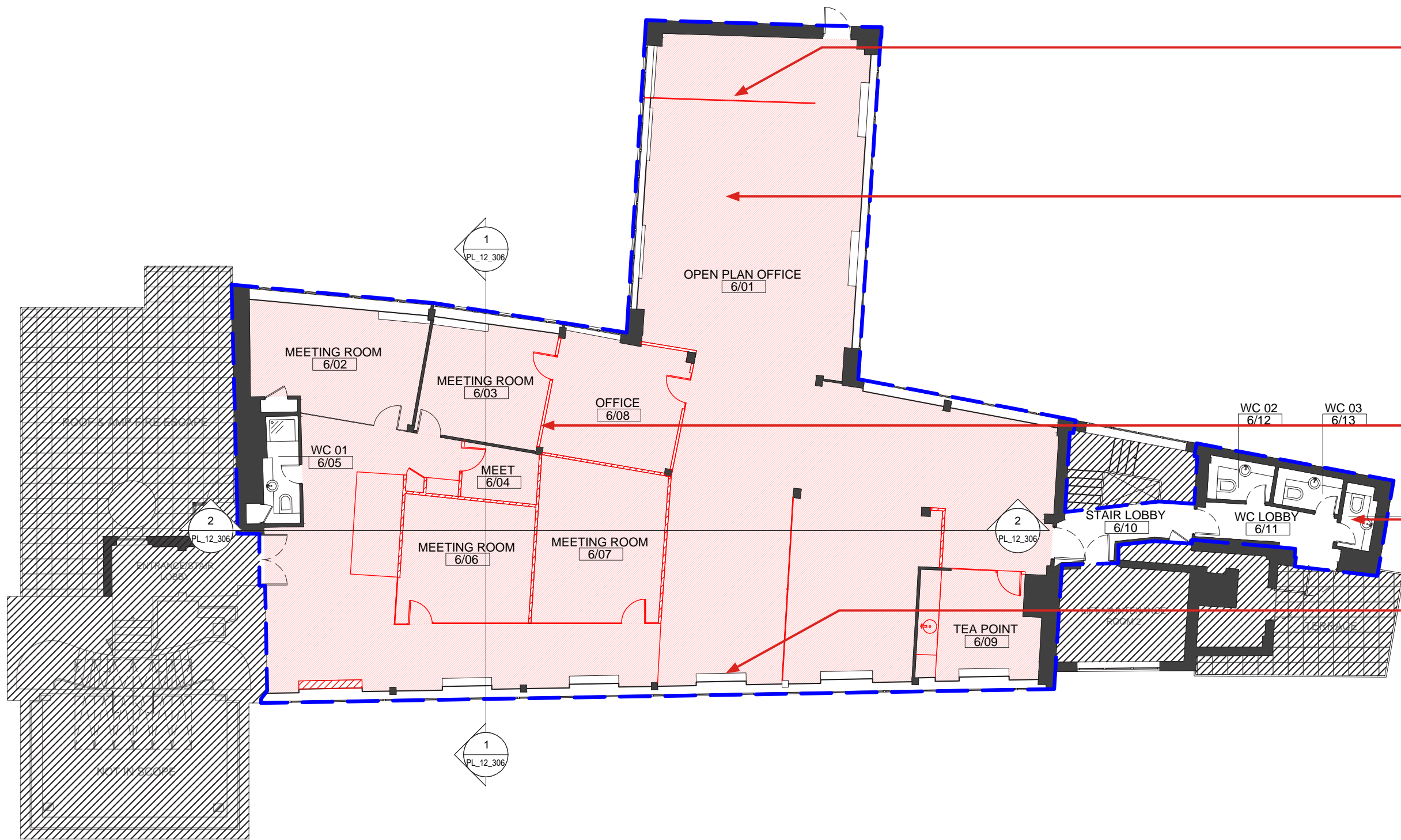


Existing meeting rooms.

6th Floor Plan - Demolitions

Internal alterations

- KEY
-  Not part of scope
 -  *Level 06 - Office refurbishment scope
 -  to be demolished
 -  to be demolished



Glazed screen moved to increase office floor plate

Floor finishes removed to allow for consistent floor finish throughout the office

Existing meeting rooms removed to create an open plan office space

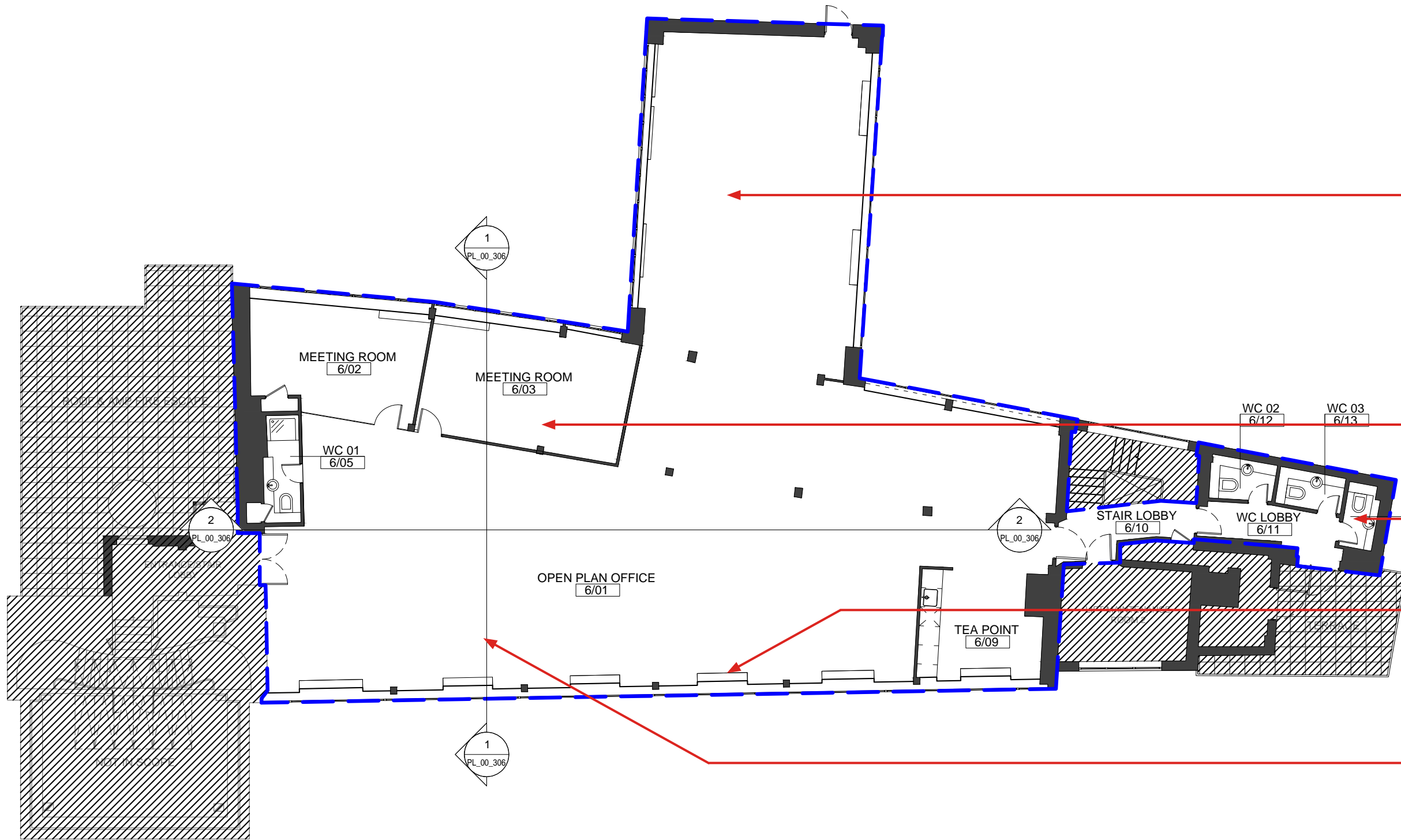
Existing sanitaryware retained with finishes and ironmongery updated.

Radiator cover infills removed and replaced with mesh to match level 03 and 04 fit-out.

6th Floor Plan - Proposed

Internal alterations

- KEY
- Not part of scope
 - Level 06 - Office refurbishment scope



New flooring throughout retail space.

Existing meeting room enlarged to create 2 meeting rooms.

New finishes and ironmongery to WCs.

New metal mesh panels in existing radiator covers.

Open plan office space for flexible use.

6th Floor Plan - Proposed

Internal alterations

6th floor office refurbishment to replicate the refurbishment at levels 3,4 and 5 which has been approved and executed under Phase 1 of the project.



Level 3 office refurbishment in Phase 1.



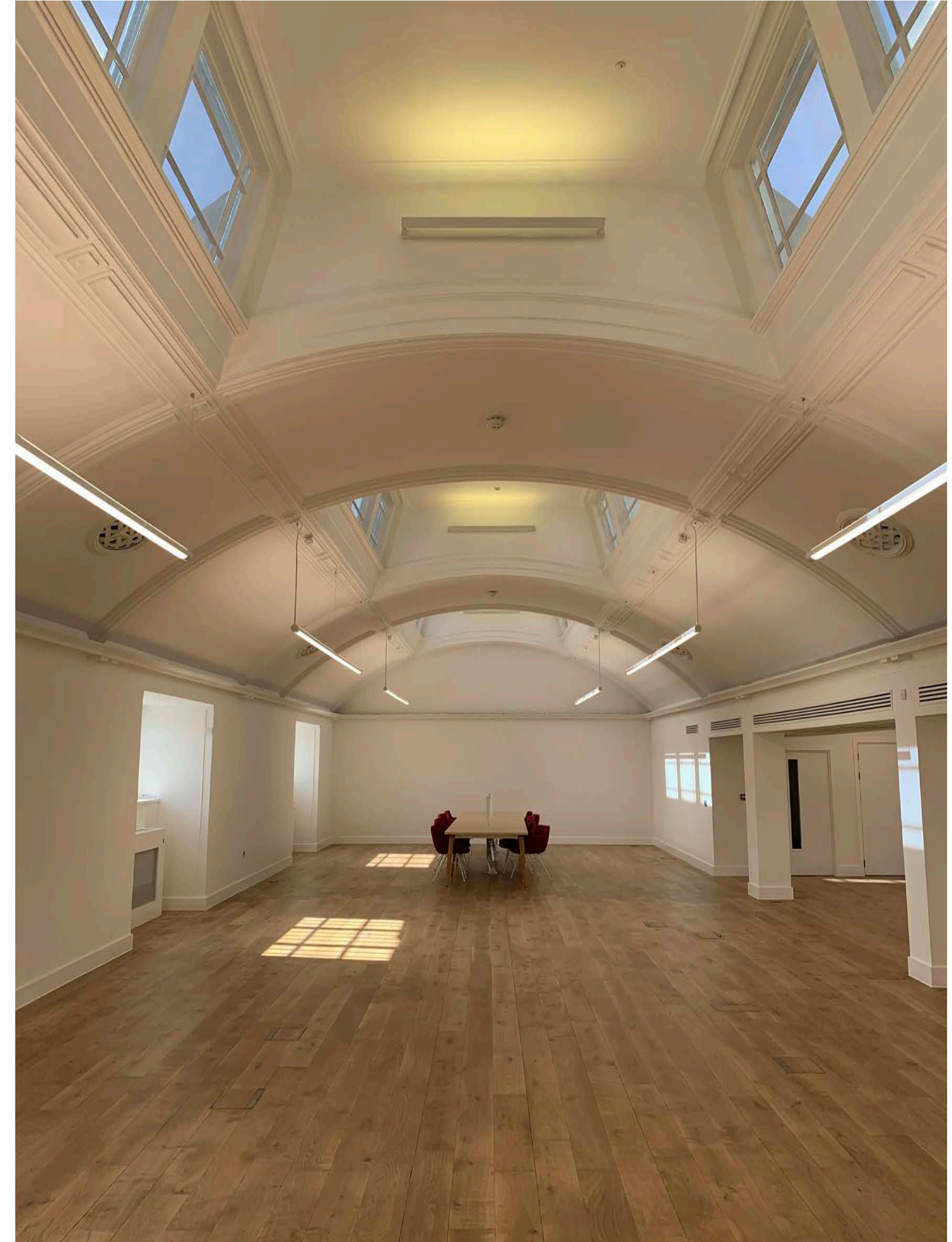
Level 3 office refurbishment in Phase 1.



Level 3 office refurbishment in Phase 1.



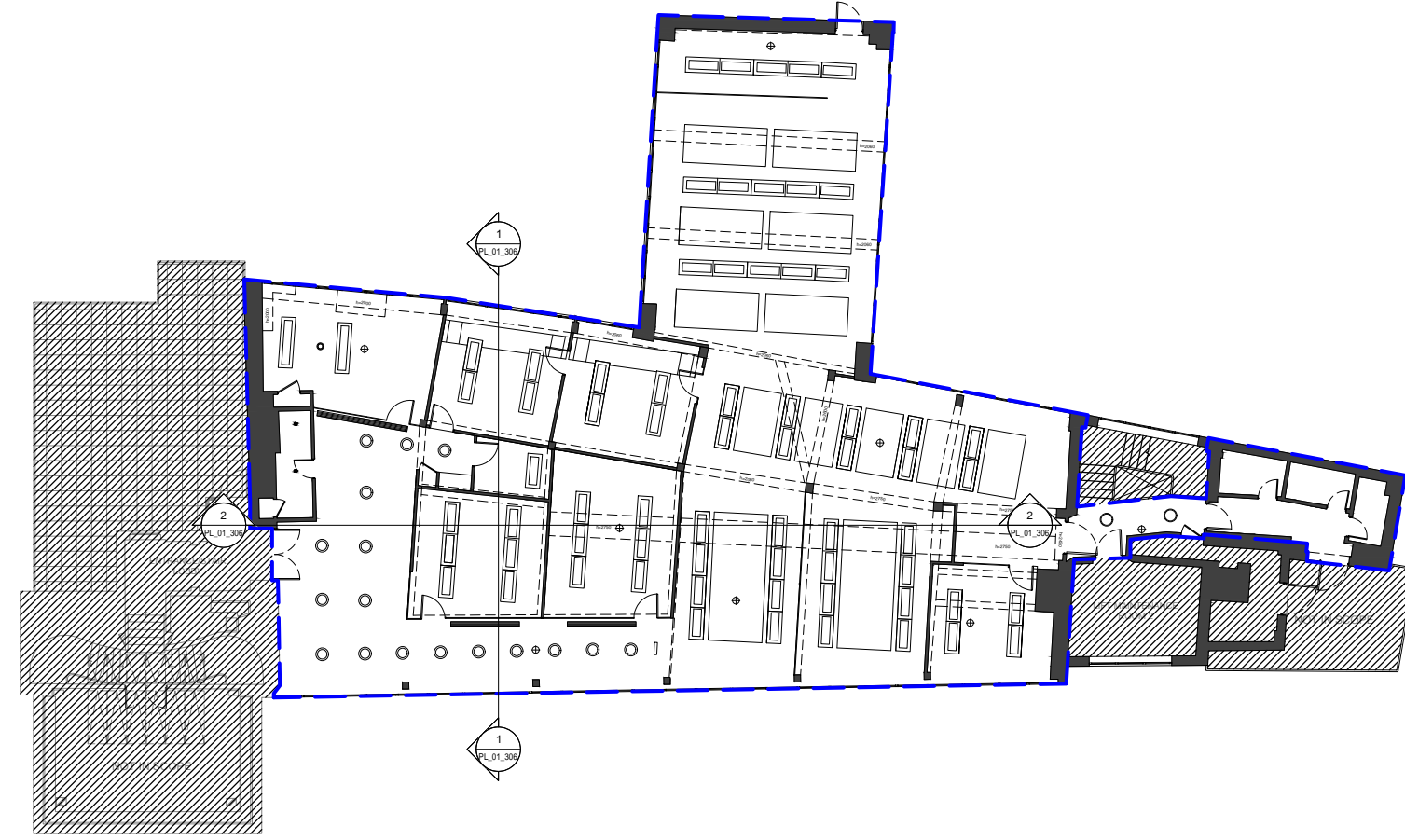
Level 4 office refurbishment in Phase 1.



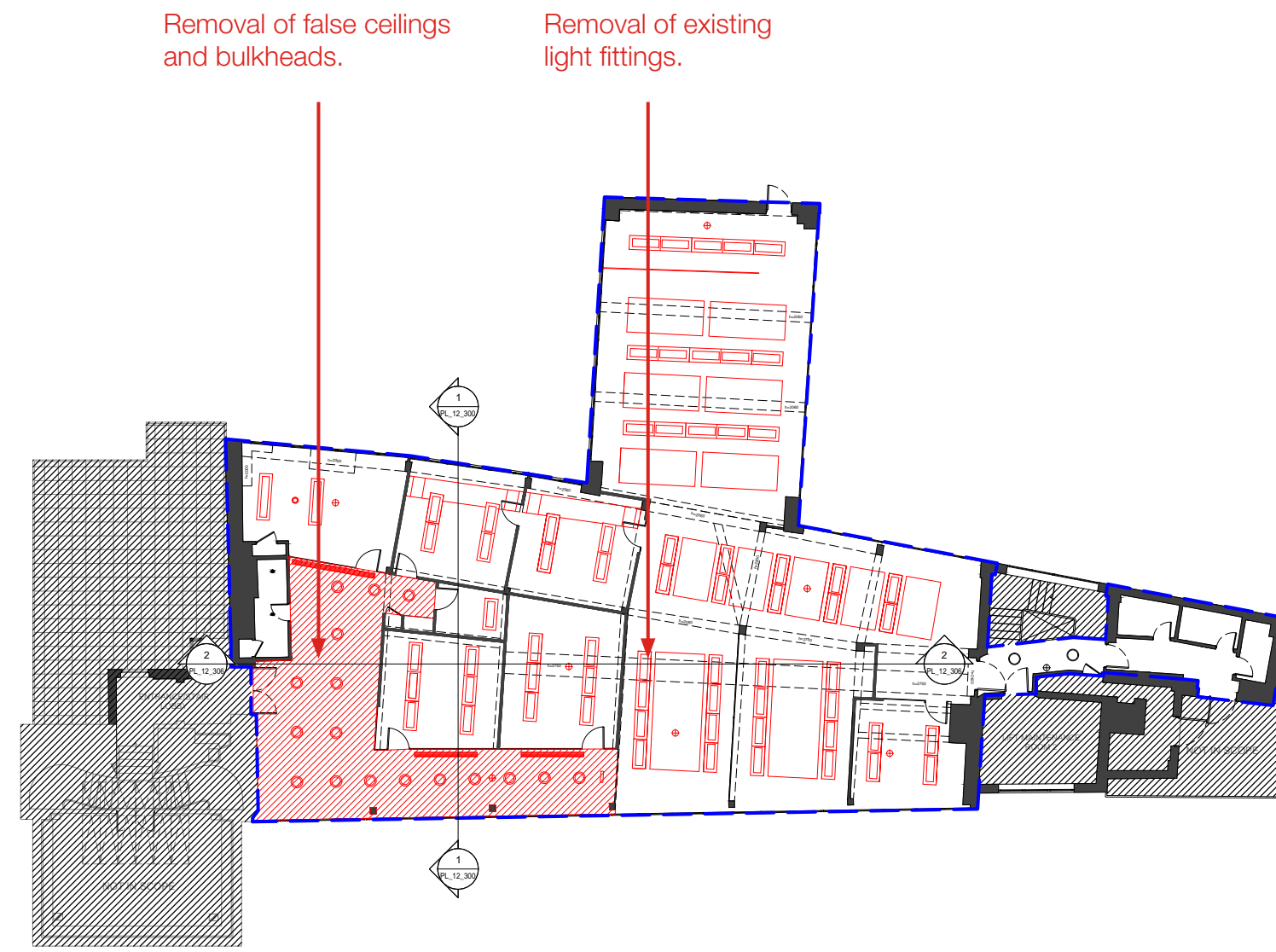
Level 4 office refurbishment in Phase 1.

6th Floor - RCP

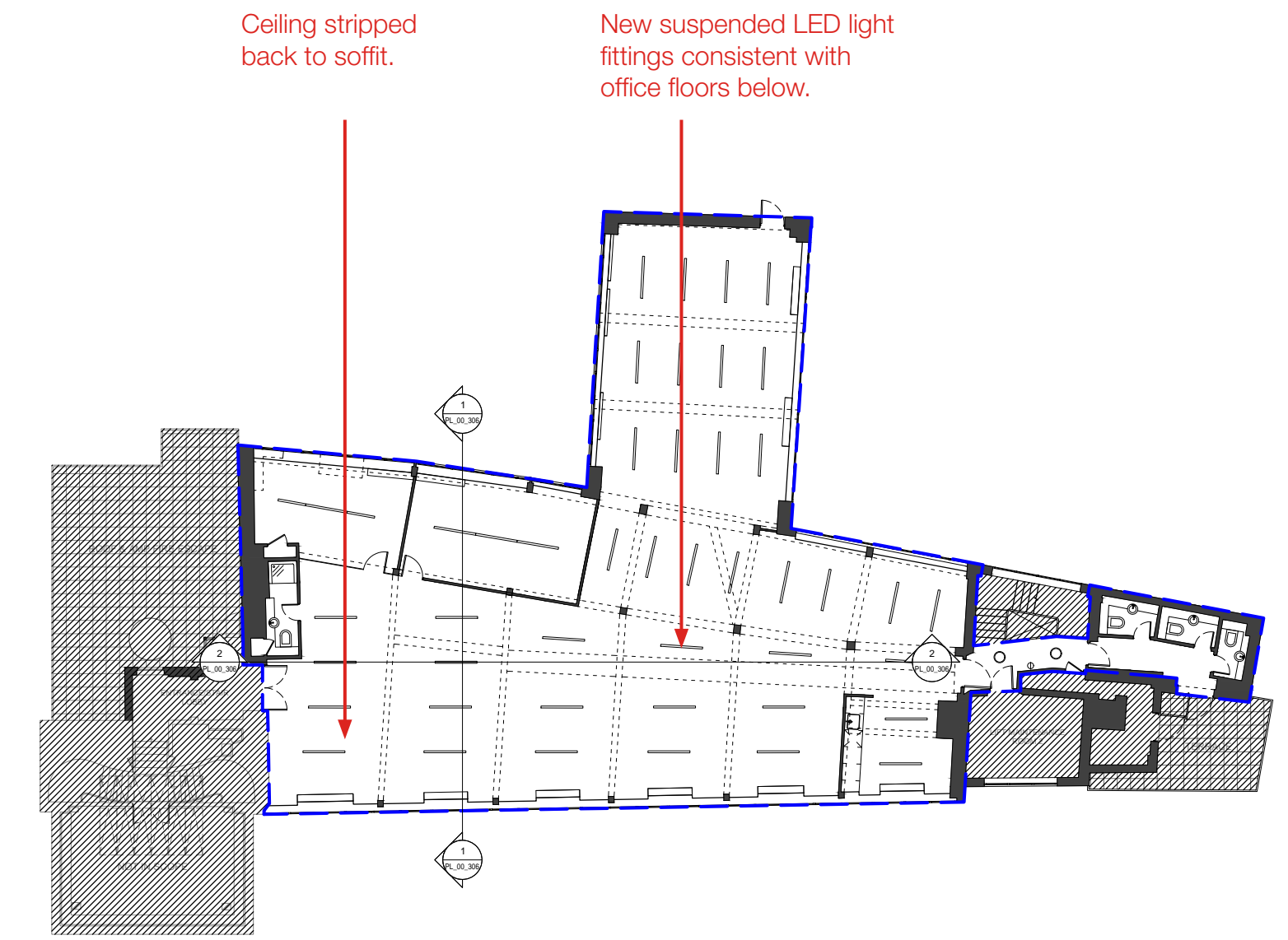
Internal alterations



6th Floor RCP - Existing



6th Floor RCP - Demolitions



6th Floor RCP - Proposed



Existing office ceiling layout at 6th floor level.

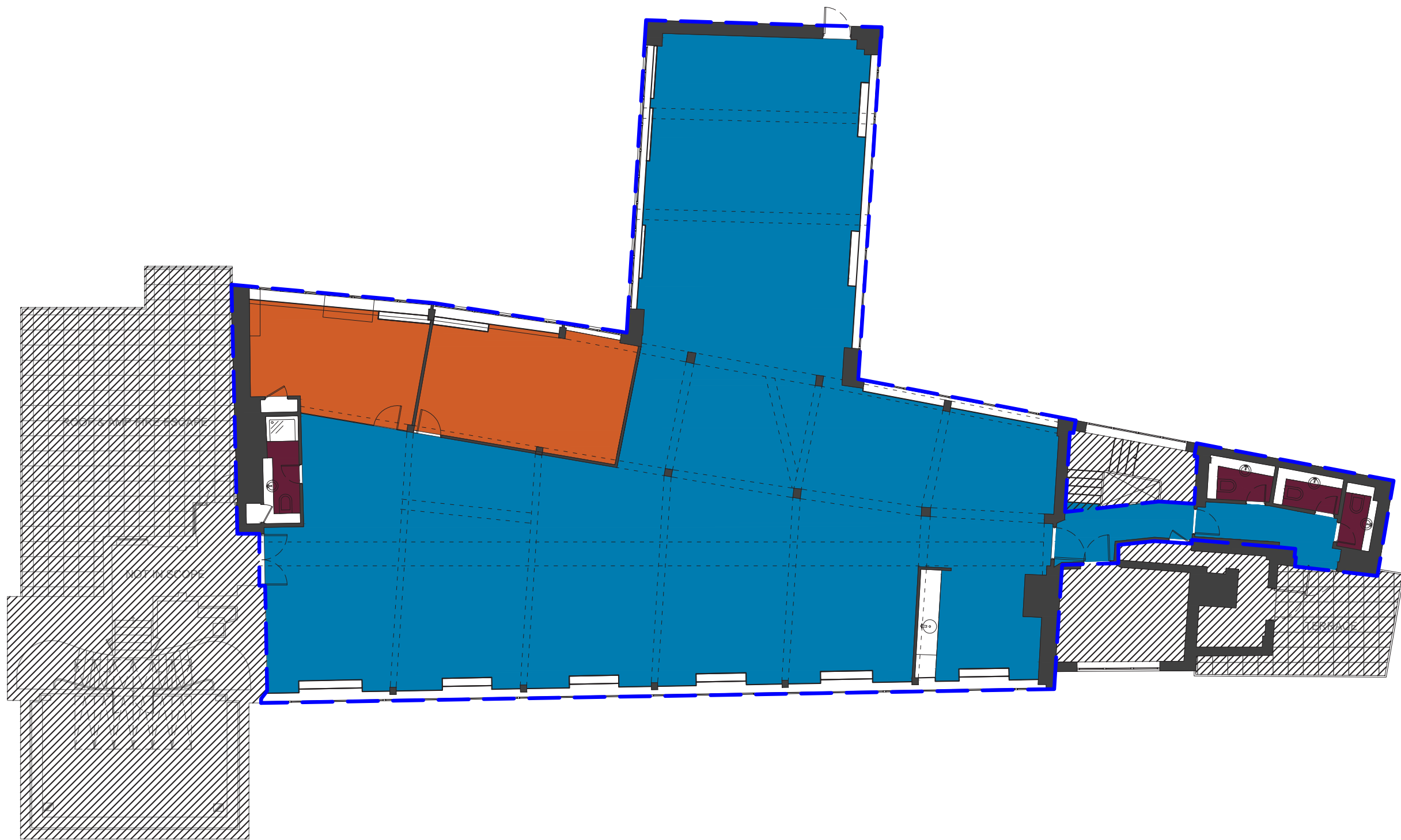


Office ceiling layout at 3rd floor level. Matching suspended LED lighting proposed at 6th floor level.

6th Floor - Finishes

Internal alterations

KEY
Not part of scope
Level 06 - Office refurbishment scope



- Retain existing tiles in WCs



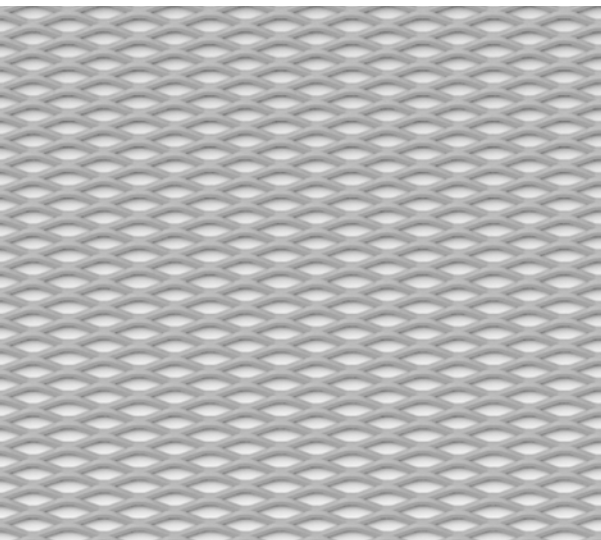
Karndean, Art Selection Glacier Oak RL21 to main office area, teapoint and lobbies.



Interface, carbon negative carpet tile, Shishu Stitch, Shade.



Dulux, 9010 Pure White to walls and ceilings.



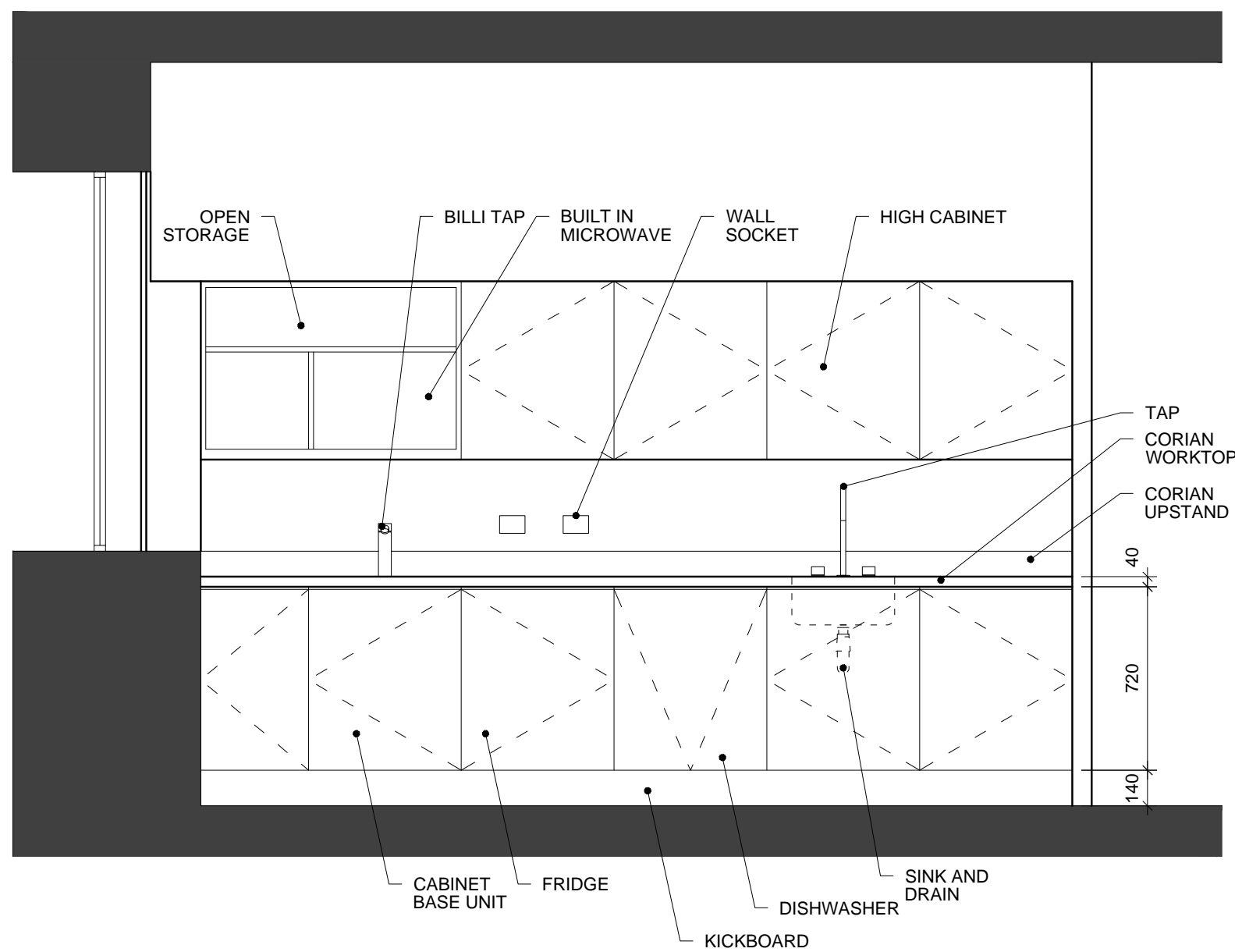
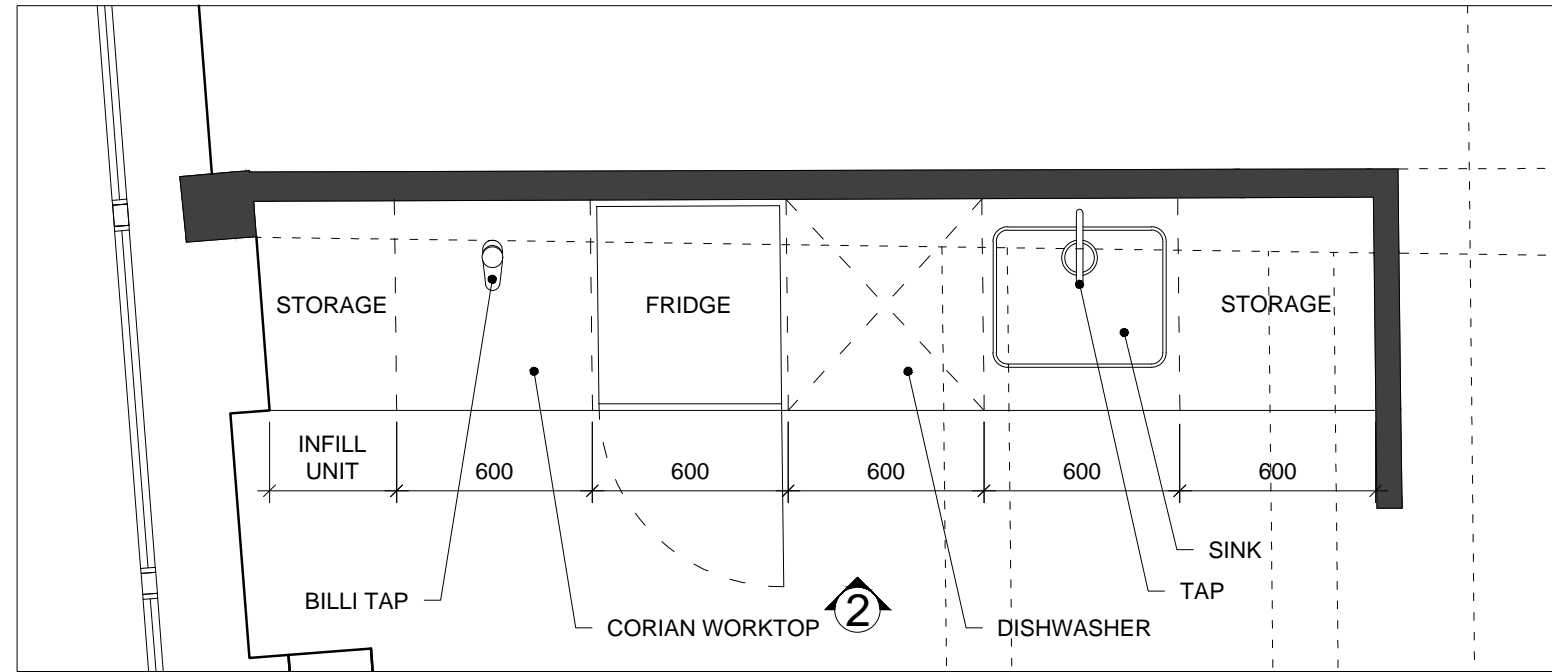
Amron, White wire mesh Amron RB25 to radiator covers.



Radiator covers at 3rd floor level. Matching radiator covers proposed at 6th floor level.

6th Floor - Teapoint

Internal alterations



- Retain existing plumbing
- Retain existing partitions to rear and side



Corian worktop and splashback - Venaro White



Howdens Greenwich handleless units - Matt Natural Oak



Billi tap, XL levered dispenser, Matte White



Dowsing & Reynolds - Gold reeded kitchen tap



Dowsing & Reynolds - Gold slotted click clack waste



Howdens Single Bowl Undermount Composite Black Kitchen Sink



Bosch Serie 6 Built-under fridge 82 x 60cm flat hinge (KUR15AFF0G)



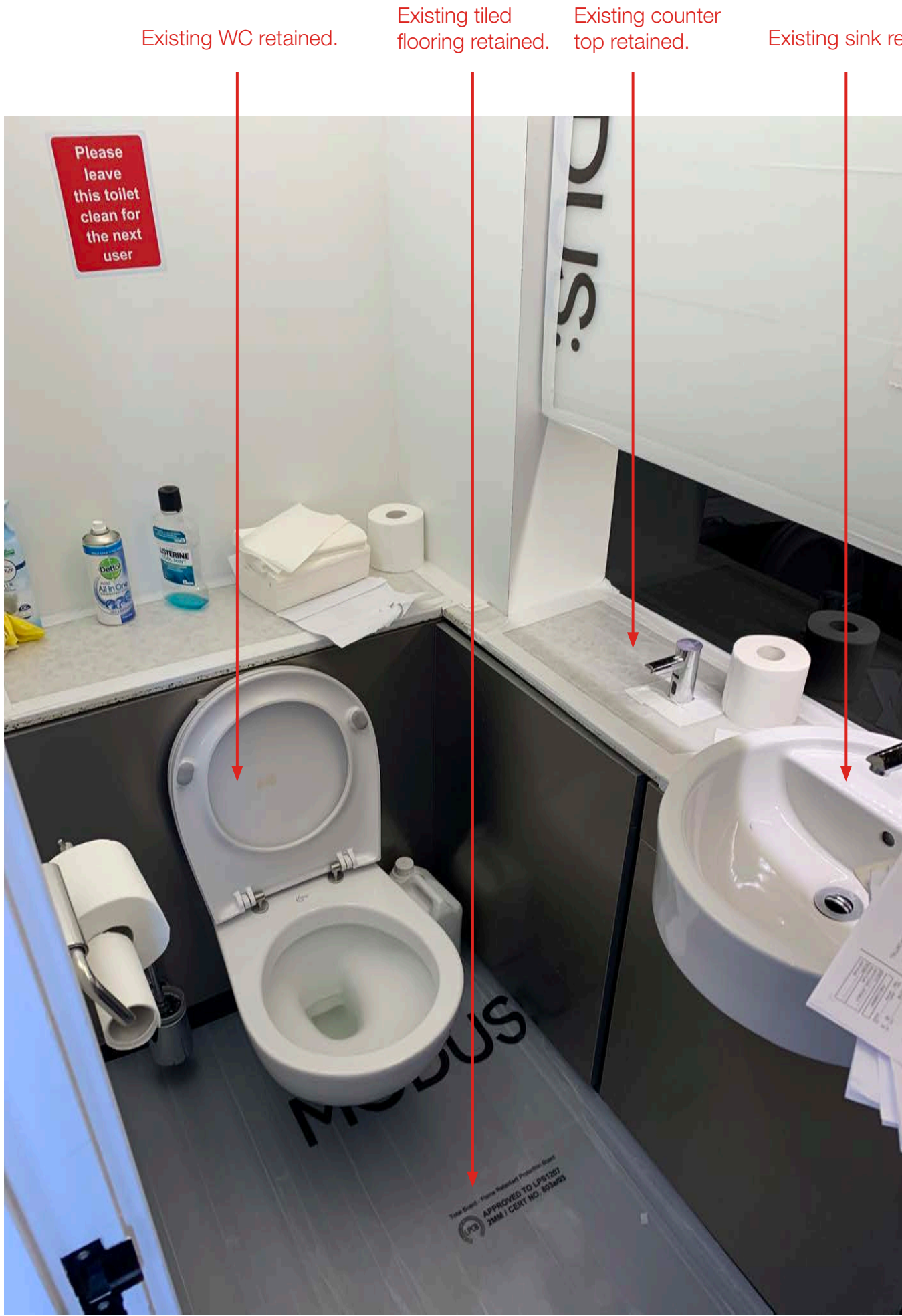
Bosch Serie 4 Fully-integrated dishwasher 60cm (SGH4HVX32G)



Bosch Serie 4 Built-in microwave oven 60 x 38cm Stainless steel (BFL523MS0B)

6th Floor - WCs

Internal alterations



6th Floor - Existing toilets



3rd Floor - Toilets

Proposed 6th Floor toilets to match.

- Retain existing flooring (black tiles)
- Retain existing toilet
- Retain existing sink
- Retain existing counter



Claybrook, Katakana large mosaic tiles - White



Oak vinyl wrap to vanity unit panels



Splashlab, Sensor deck mounted tap - Black



Splashlab, Sensor deck mounted soap - Black



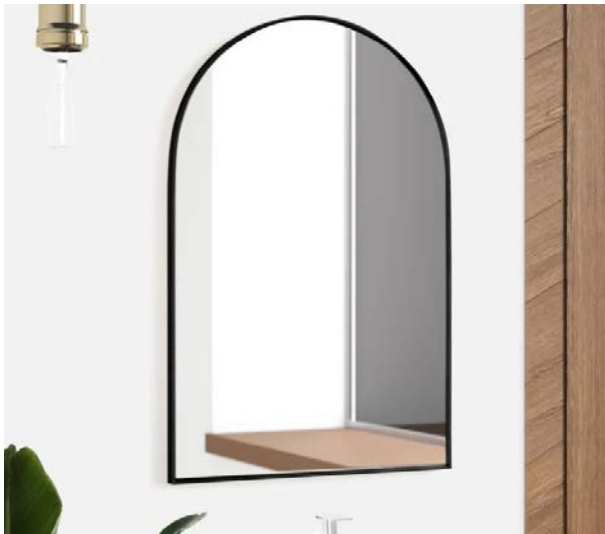
Splashlab, Single toilet roll holder - Black



Geberit, Sigma 20 dual flush plate - Black



Schwung, Odyssey Medium Wall Sconce - Black Gunmetal, Glass



Arched mirror with black frame



Opal Steel Large Hand Towel Dispenser - Black

Summary

Works seeking Listed Building Consent approval

1. Removal of meeting rooms to provide open flexible office space.
2. Removal of suspended ceilings and existing light fittings. Exposed ceiling soffit with suspended LED lights to provide a consistent aesthetic across the office floor.
3. New and consistent floor and wall finishes to create a fresh and consistent finish across the office floorplate.
4. Refurbished teapoint and refreshed finishes to existing WCs.

