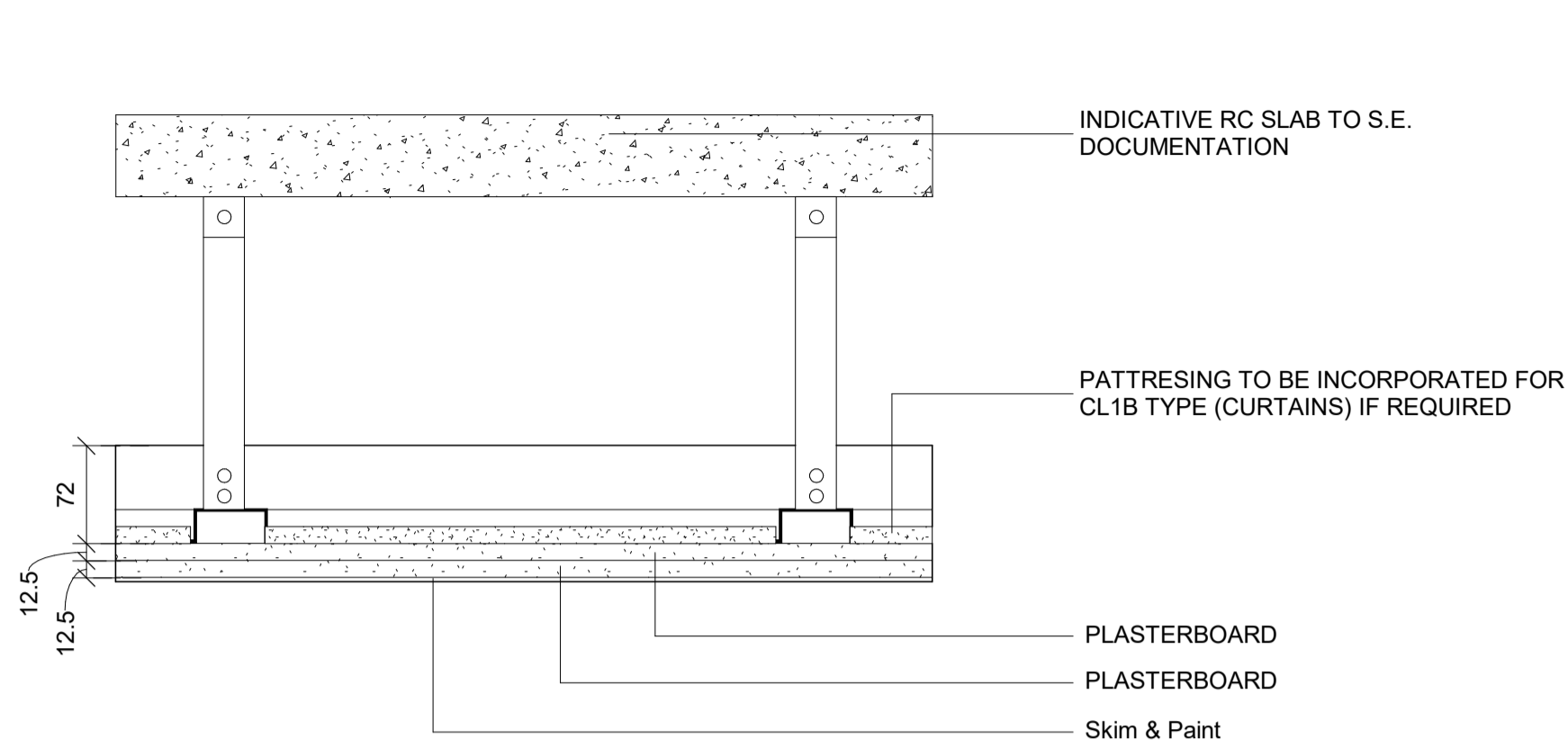


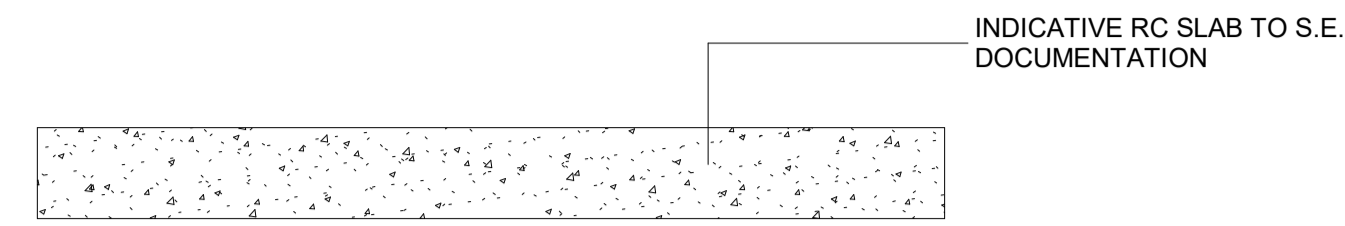
**NOTES**

- TO BE READ IN CONJUNCTION WITH FIRE STRATEGY DRAWINGS SERIES 0402, ACOUSTIC DRAWINGS SERIES 0403, THERMAL DRAWINGS SERIES 0413
- REFER TO 0404 DRAWINGS FOR INTERNAL WALLS SCOPE. FOR INTERNAL CEILINGG SCOPE REFER TO 0407 DRAWINGS.
- ALL PLASTERBOARD TO RETURN AROUND WINDOWS
- FOR ACCESS PANELS, PLEASE REFER TO M&E DOCUMENTATION. FINAL NUMBER AND LOCATION TO BE CONFIRMED WITH SUBCONTRACTOR. ALL ACCESS PANELS TO BE CONCEALED.
- WHEN USED IN WET AREAS SUCH AS WC'S, SHOWERS PLEASE USE MOISTURE RESISTANCE BOARD TO MANUFACTURER'S RECOMMENDATION.
- BLOCKWORK PACKAGE TO BE READ IN CONJUNCTION WITH S.E. DOCUMENTATION. FINAL DESIGN BY SUBCONTRACTOR. DETAILS ARE INDICATIVELY ONLY.
- FOR PLY PATRESS & SKIRTING REFER TO XX
- BUILD-UPS & INTERFACE DETAILS SHOWN INDICATIVELY ONLY. SUBCONTRACTOR TO ENSURE IT ACHIEVES THE REQUIRED FIRE, ACOUSTIC & THERMAL PERFORMANCE. SUBCONTRACTOR TO ENSURE ALL DETAILS ARE IN LINE WITH MANUFACTURER'S BROCHURE AND RECOMMENDATION.
- SUBCONTRACTOR TO ENSURE THAT ALL PENETRATION THROUGH WALLS AND FLOORS ACHIEVE THE FIRE PERFORMANCE (INSULATION & INTEGRITY) REQUIRED AS PER THE FIRE STRATEGY.
- ALL BOARDS TO GO FROM SLAB TO SLAB TO ENSURE FIRE, ACOUSTICS AND THERMAL IS ACHIEVED.
- TO BE READ IN CONJUNCTION WITH MEP & S.E. DOCUMENTATION



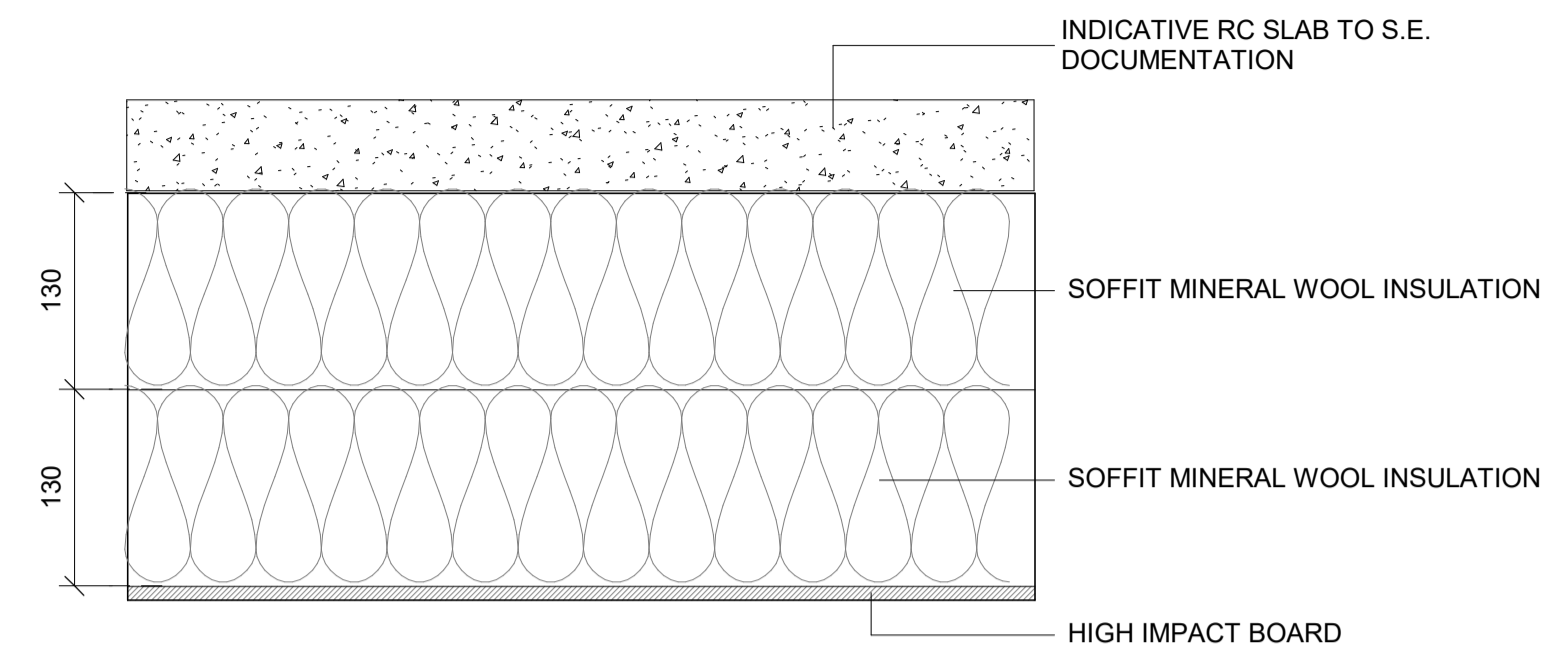
FIRE RATING -  
ACOUSTIC RATING -

**01** CEILING TYPE CL1 & CL1 B  
APARTMENTS



FIRE RATING -  
ACOUSTIC RATING -

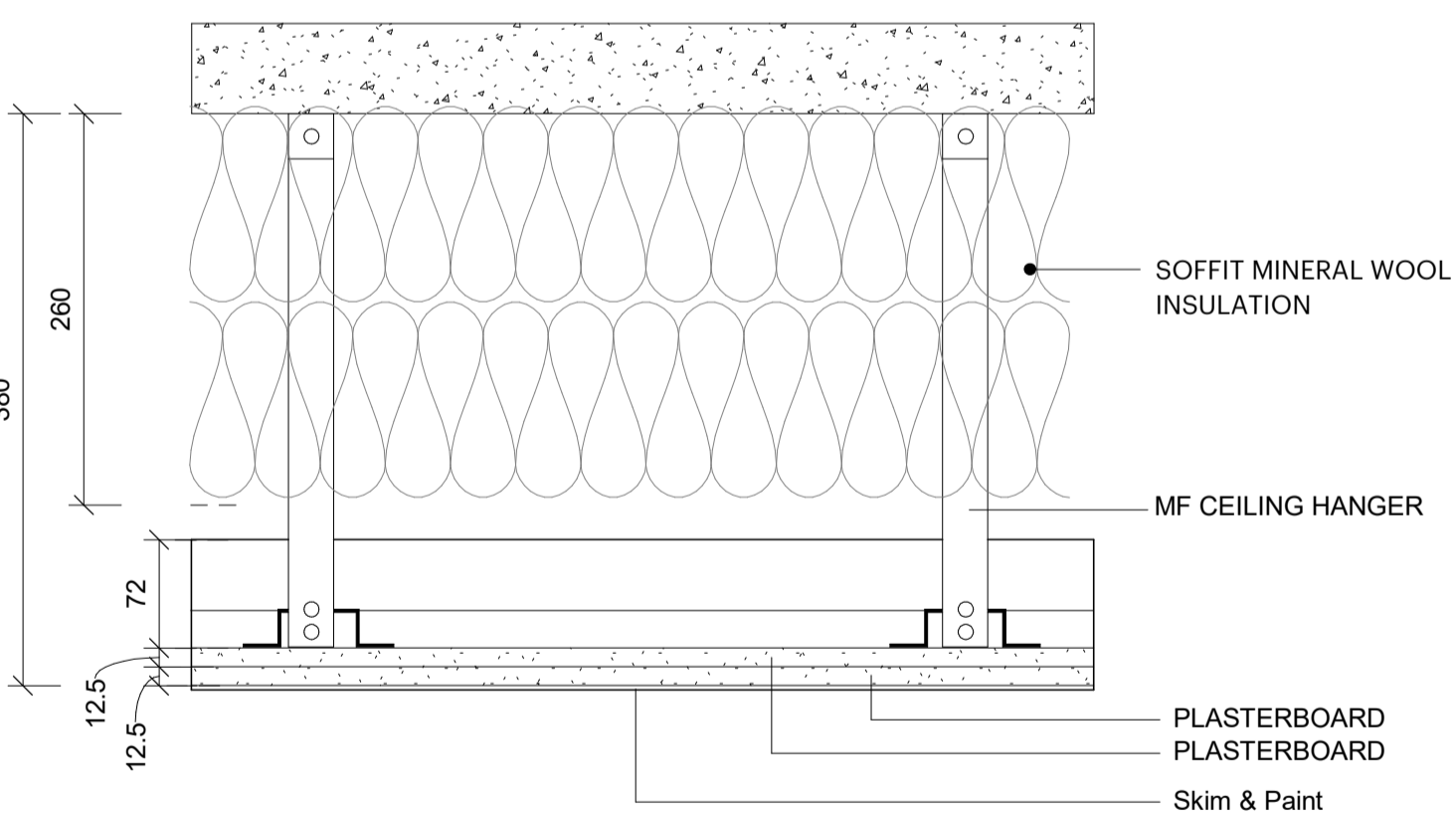
**02** CEILING TYPE CL2  
EXPOSED SOFFIT



THERMAL - 0.15 W/M2K

FIRE RATING -  
ACOUSTIC RATING -

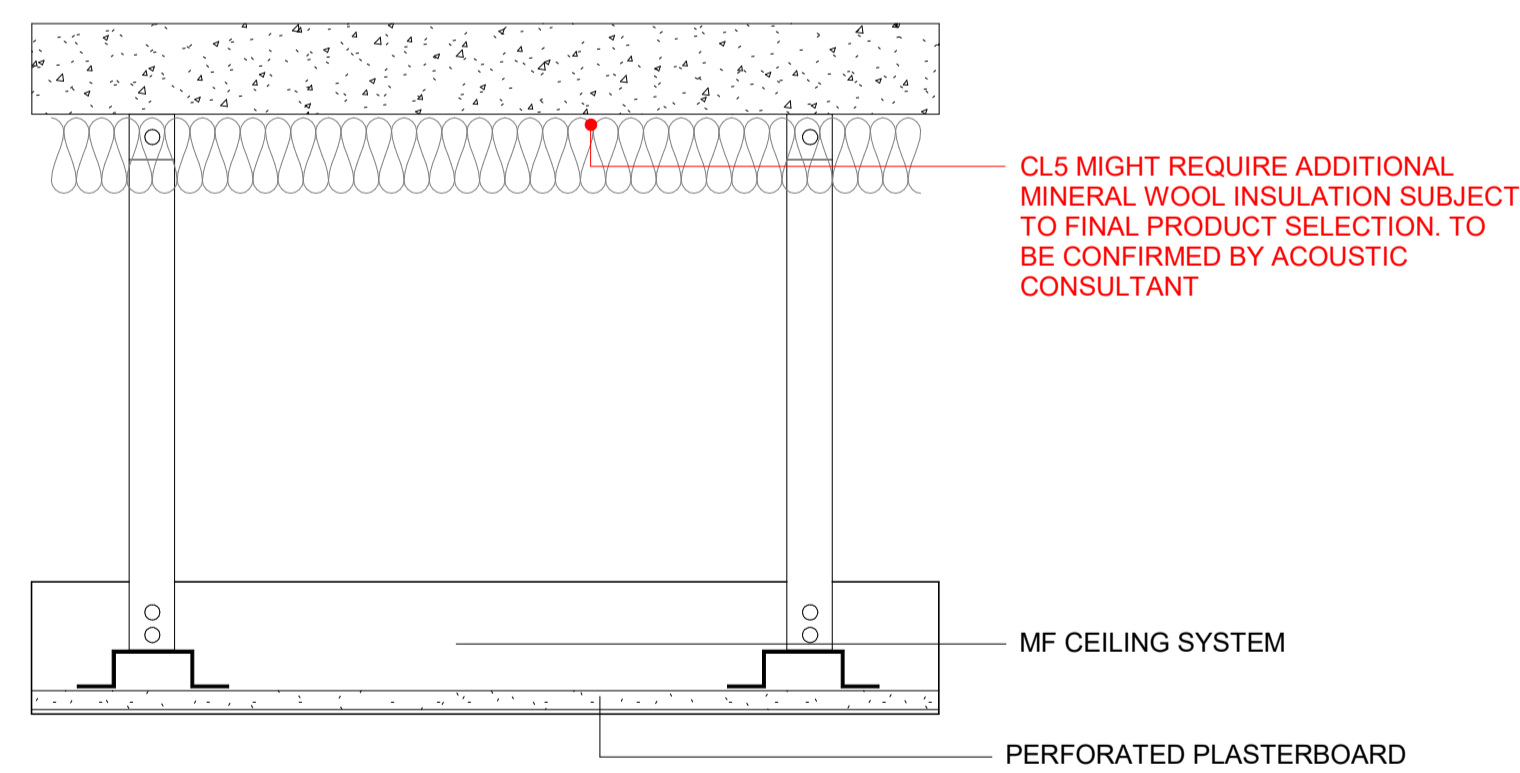
**03** CEILING TYPE CL3  
INSULATED SOFFIT - GF BoH / Commercial



THERMAL - 0.15 W/M2K

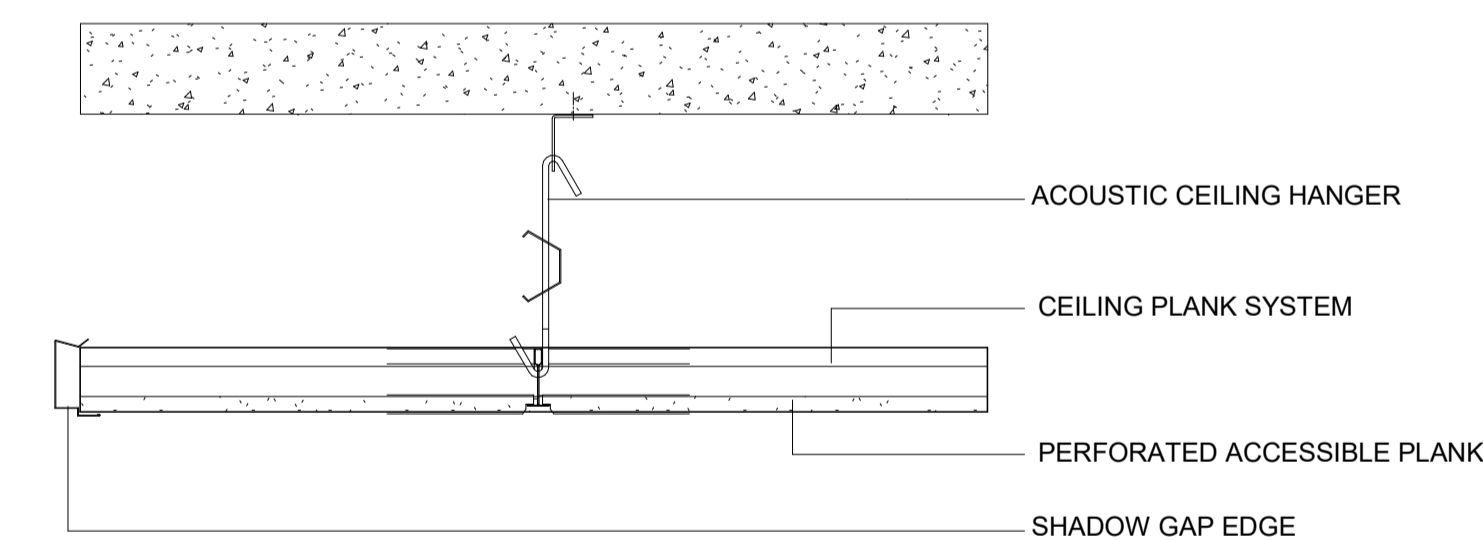
FIRE RATING -  
ACOUSTIC RATING -

**04** CEILING TYPE CL4  
RESIDENTIAL FOYER



FIRE RATING -  
ACOUSTIC RATING Refer to acoustic report

**05** CEILING TYPE CL5  
LIFT LOBBIES - NON ACCESSIBLE



FIRE RATING -  
ACOUSTIC RATING Refer to acoustic report

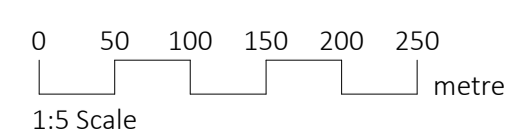
**06** CEILING TYPE CL6  
LIFT LOBBIES - ACCESSIBLE

Date	Rev	Description	Legend	Notes
14.07.2022	P1	STAGE 3 ISSUE		

Key Plan

Disclaimer

dMFK Architects Ltd take no responsibility for dimensions obtained by scaling from this drawing. If no dimension is shown the recipient must ascertain the dimension specifically from the architect or by site measurement and may not rely on the drawing. Supply of the drawing in digital form is solely for convenience and no reliance may be placed on any data in digital form. All data must be checked against hard copy. This drawing is issued for design intent only and should not be used for construction unless stated.



Copyright: This drawing is the property of dMFK Architects Ltd. No disclosure or copy of it may be made without the written permission of dMFK Architects Ltd

Scale	As indicated	Checked	Date
A1	1:10	@A3	
RG	JW		14.07.2022

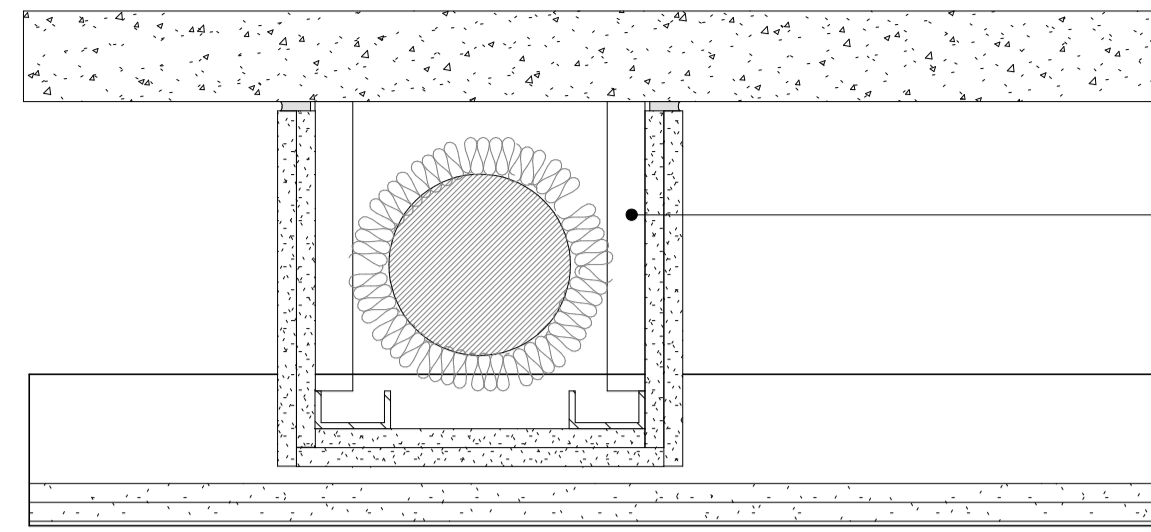
Project:  
Kentish Town Road  
Client:  
Folgate Estates

Drawing Title:  
Internal Ceiling Types  
Drawing No:  
KTT-dMFK-ZZ-DR-A-060700

Rev: Suit:  
P1 S4



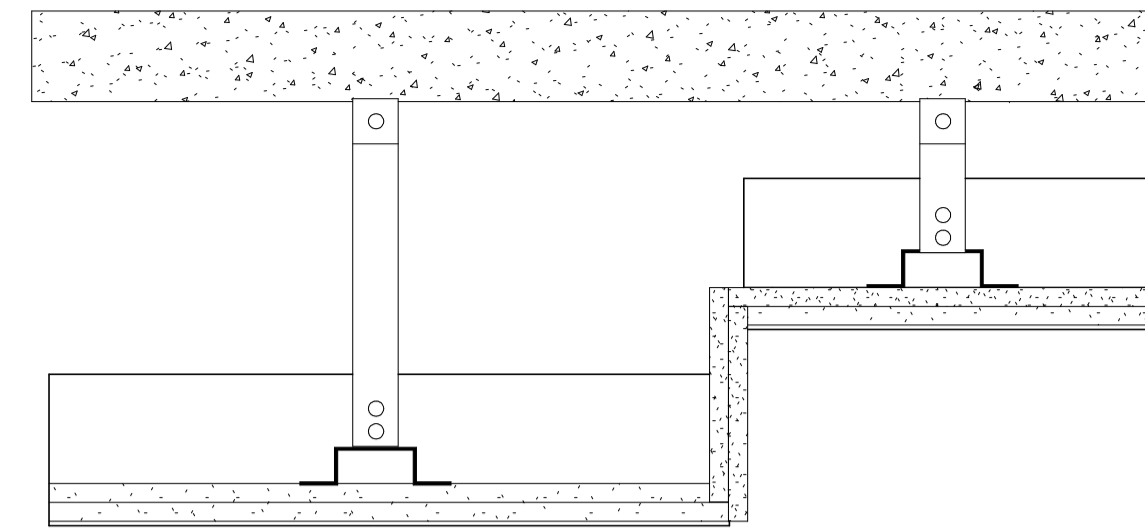
The Old Library, 119 Cholmley Gardens, London. NW6 1AA  
t: 0207 435 1144 e: info@dMFK.co.uk w: www.dMFK.co.uk



2X12.5MM SOUNDBLOC FOR BOXING IN CORRIDORS/KITCHENS AND 2X15MM SOUNDBLOC FOR BOXING IN LIVING ROOMS/BEDROOMS.

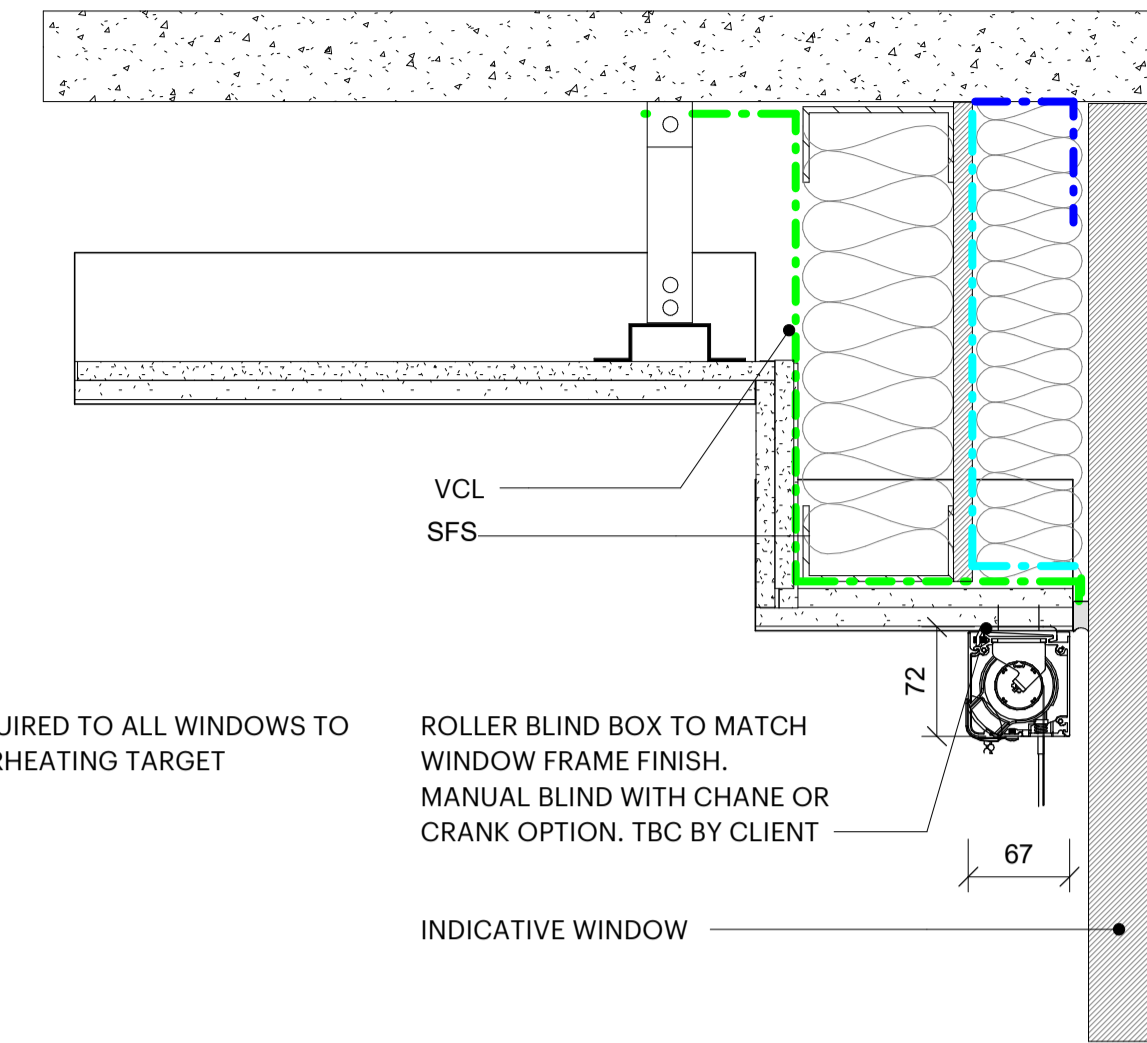
01

### Typical Services Encasement



02

### Typical Ceiling Recess



BLIND REQUIRED TO ALL WINDOWS TO MEET OVERHEATING TARGET

ROLLER BLIND BOX TO MATCH WINDOW FRAME FINISH. MANUAL BLIND WITH CHANE OR CRANK OPTION. TBC BY CLIENT

INDICATIVE WINDOW

03

### Typical Roller Blind Detail

#### NOTES

- TO BE READ IN CONJUNCTION WITH FIRE STRATEGY DRAWINGS SERIES 0402, ACOUSTIC DRAWINGS SERIES 0403, THERMAL DRAWINGS SERIES 0413
- REFER TO 0404 DRAWINGS FOR INTERNAL WALLS SCOPE. FOR INTERNAL CEILINGG SCOPE REFER TO 0407 DRAWINGS.
- ALL PLASTERBOARD TO RETURN AROUND WINDOWS
- FOR ACCESS PANELS, PLEASE REFER TO M&E DOCUMENTATION. FINAL NUMBER AND LOCATION TO BE CONFIRMED WITH SUBCONTRACTOR. ALL ACCESS PANELS TO BE CONCEALED AND FLUSH. FINISHES TO MATCH ADJACENT SURFACE.DETAILS TO BE DEGVELOPED AS PART OF STAGE 4
- ANY VISIBLE SERVICES GOING THROUGH DRYLINING WALLS/ CEILINGS TO SIT FLUSH. DETAILS TO BE DEGVELOPED AS PART OF STAGE 4
- WHEN USED IN WET AREAS SUCH AS WC 'S, SHOWERS PLEASE USE MOISTURE RESISTANCE BOARD TO MANUFACTURER 'S RECOMMENDATION.
- BLOCKWORK PACKAGE TO BE READ IN CONJUNCTION WITH S.E. DOCUMENTATION. FINAL DESIGN BY SUBCONTRACTOR. DETAILS ARE INDICATIVELY ONLY. WINDPOST, MOVEMENT JOINTS LOCATION TO BE COORDINATED WITH S.E. IN STAGE 4.
- FOR PLY PATTRESS & SKIRTING REFER TO XX
- BUILD-UPS & INTERFACE DETAILS SHOWN INDICATIVELY ONLY. SUBCONTRACTOR TO ENSURE IT ACHIEVES THE REQUIRED FIRE, ACOUSTIC & THERMAL PERFORMANCE. SUBCONTRACTOR TO ENSURE ALL DETAILS ARE IN LINE WITH MANUFACTURER 'S BROCHURE AND RECOMMENDATION.
- SUBCONTRACTOR TO ENSURE THAT ALL PENETRATION THROUGH WALLS AND FLOORS ACHIEVE THE FIRE PERFORMANCE (INSULATION & INTEGRITY) REQUIRED AS PER THE FIRE STRATEGY.
- ALL BOARDS TO GO FROM SLAB TO SLAB TO ENSURE FIRE, ACOUSTICS AND THERMAL IS ACHIEVED.
- TO BE READ IN CONJUNCTION WITH MEP & S.E. DOCUMENTATION

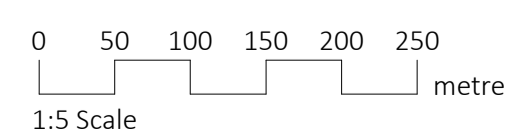
Date	Rev	Description	Legend	Notes
14.07.2022	P1	STAGE 3 ISSUE		

Key Plan

Disclaimer

dMFK Architects Ltd take no responsibility for dimensions obtained by scaling from this drawing. If no dimension is shown the recipient must ascertain the dimension specifically from the architect or by site measurement and may not rely on the drawing. Supply of the drawing in digital form is solely for convenience and no reliance may be placed on any data in digital form. All data must be checked against hard copy. This drawing is issued for design intent only and should not be used for construction unless stated.

Copyright: This drawing is the property of dMFK Architects Ltd. No disclosure or copy of it may be made without the written permission of dMFK Architects Ltd



Scale	As indicated	1:10	@A3
Drawn	Checked	Date	
RG	JW	14.07.2022	

Project:  
Kentish Town Road  
Client:  
Folgate Estates

Drawing Title:  
Ceiling Typical Details  
Drawing No:  
KTT-dMFK-ZZ-DR-A-060710

Rev: Suit:  
P1 S4

# dMFK

The Old Library, 119 Cholmley Gardens, London. NW6 1AA  
t: 0207 435 1144 e: info@dMFK.co.uk w: www.dMFK.co.uk