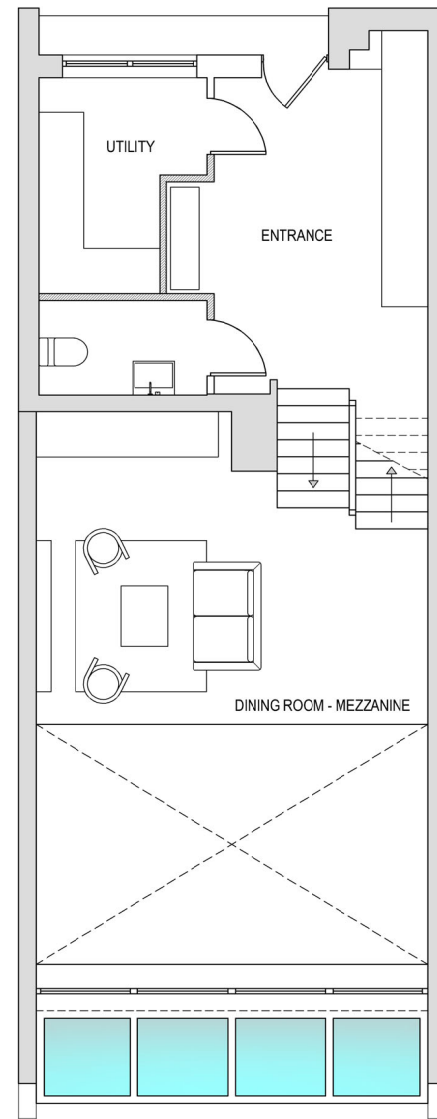
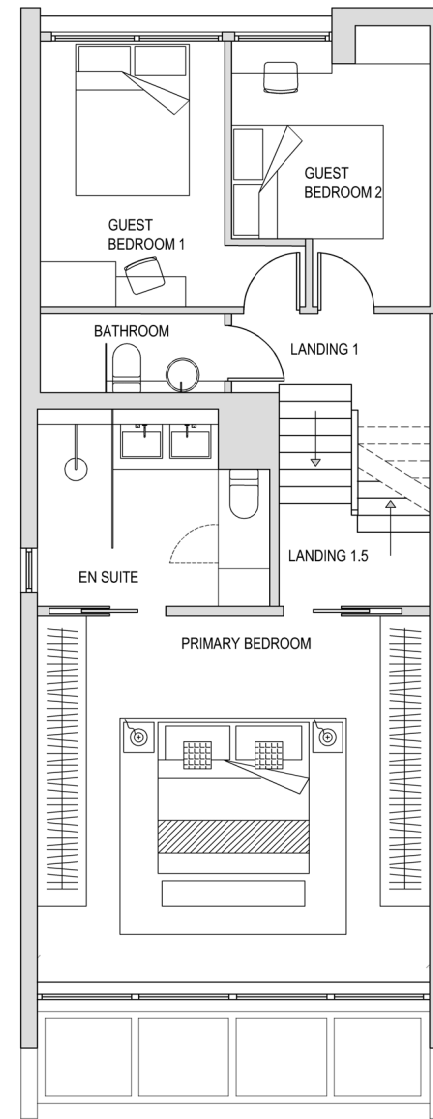


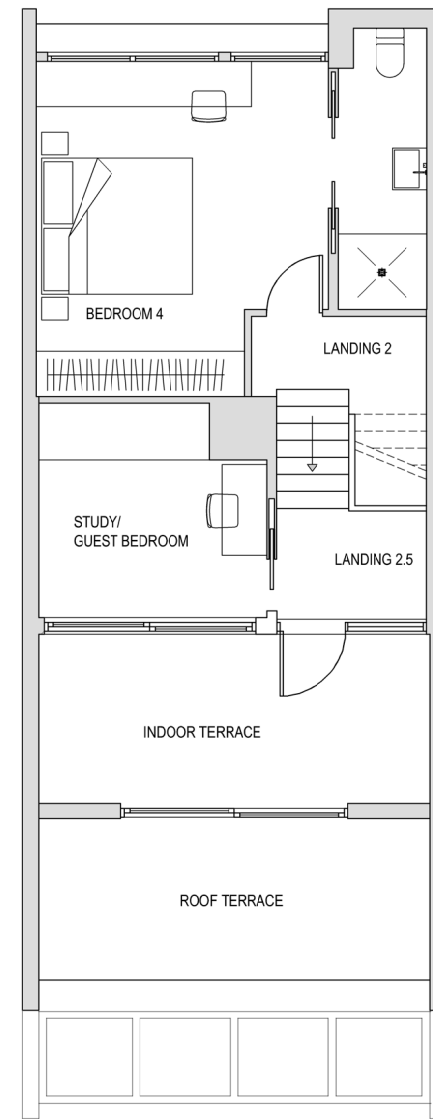
Lower Ground Floor



Ground Floor



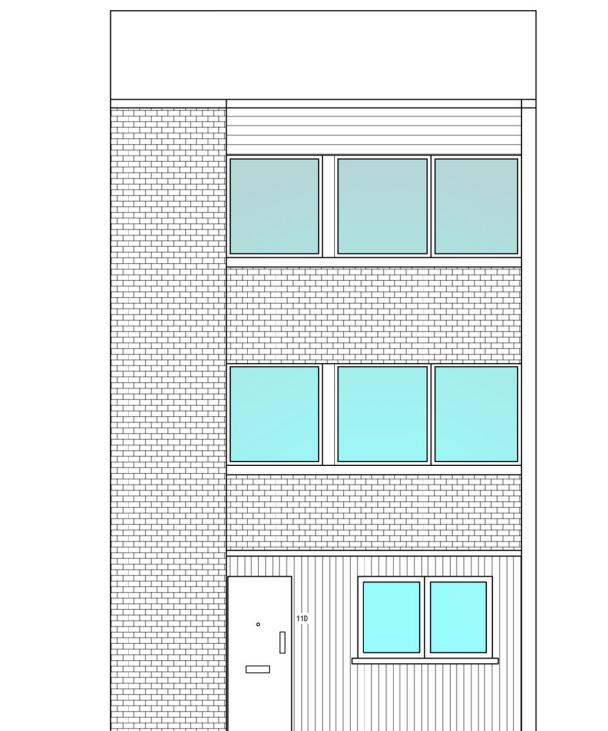
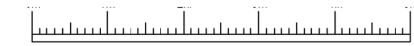
1st Floor



2nd Floor

- 1. Line of existing rear of building.
- 2. New sliding double glazed aluminium doors with frames RAL colour 7016





FRONT ELEVATION

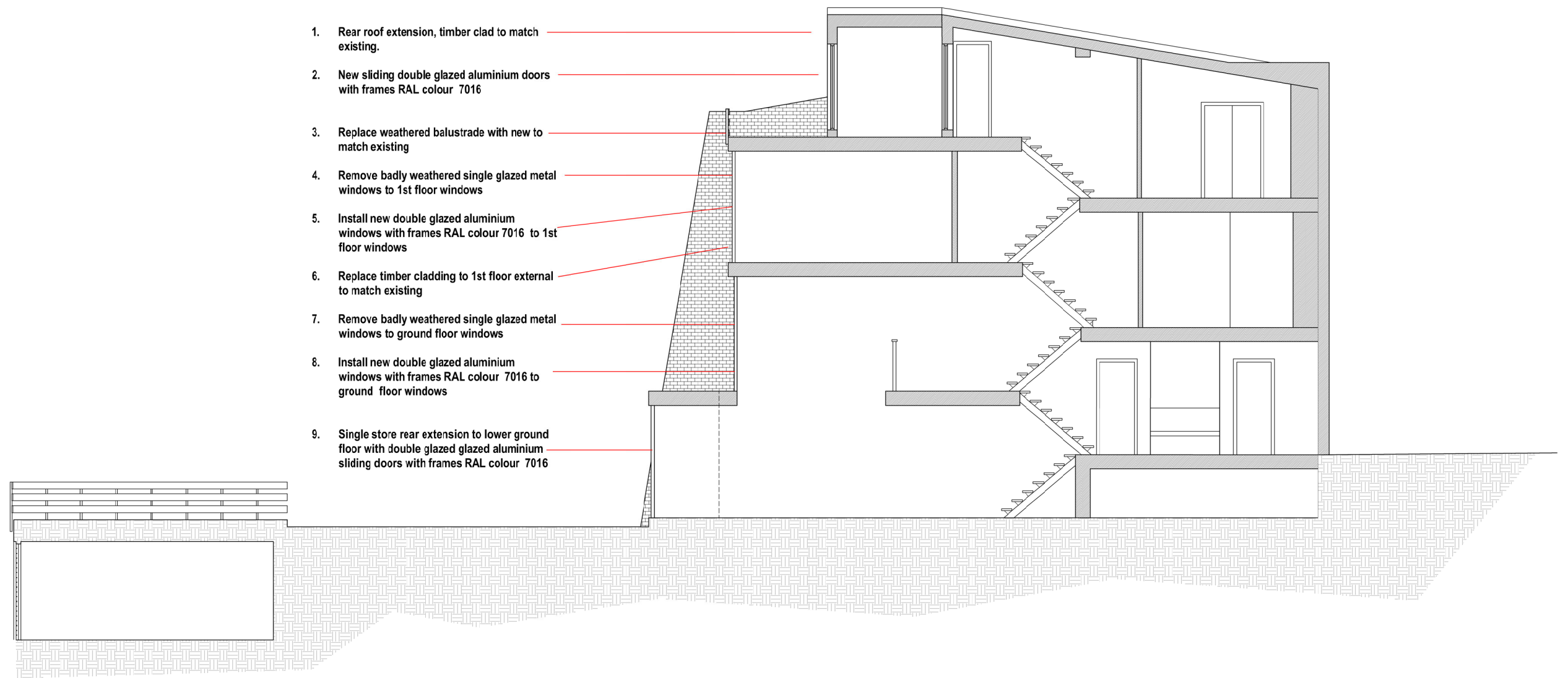


11E

11D

11C

REAR ELEVATION



1. Rear roof extension, timber clad to match existing.
2. New sliding double glazed aluminium doors with frames RAL colour 7016
3. Replace weathered balustrade with new to match existing
4. Remove badly weathered single glazed metal windows to 1st floor windows
5. Install new double glazed aluminium windows with frames RAL colour 7016 to 1st floor windows
6. Replace timber cladding to 1st floor external to match existing
7. Remove badly weathered single glazed metal windows to ground floor windows
8. Install new double glazed aluminium windows with frames RAL colour 7016 to ground floor windows
9. Single store rear extension to lower ground floor with double glazed aluminium sliding doors with frames RAL colour 7016