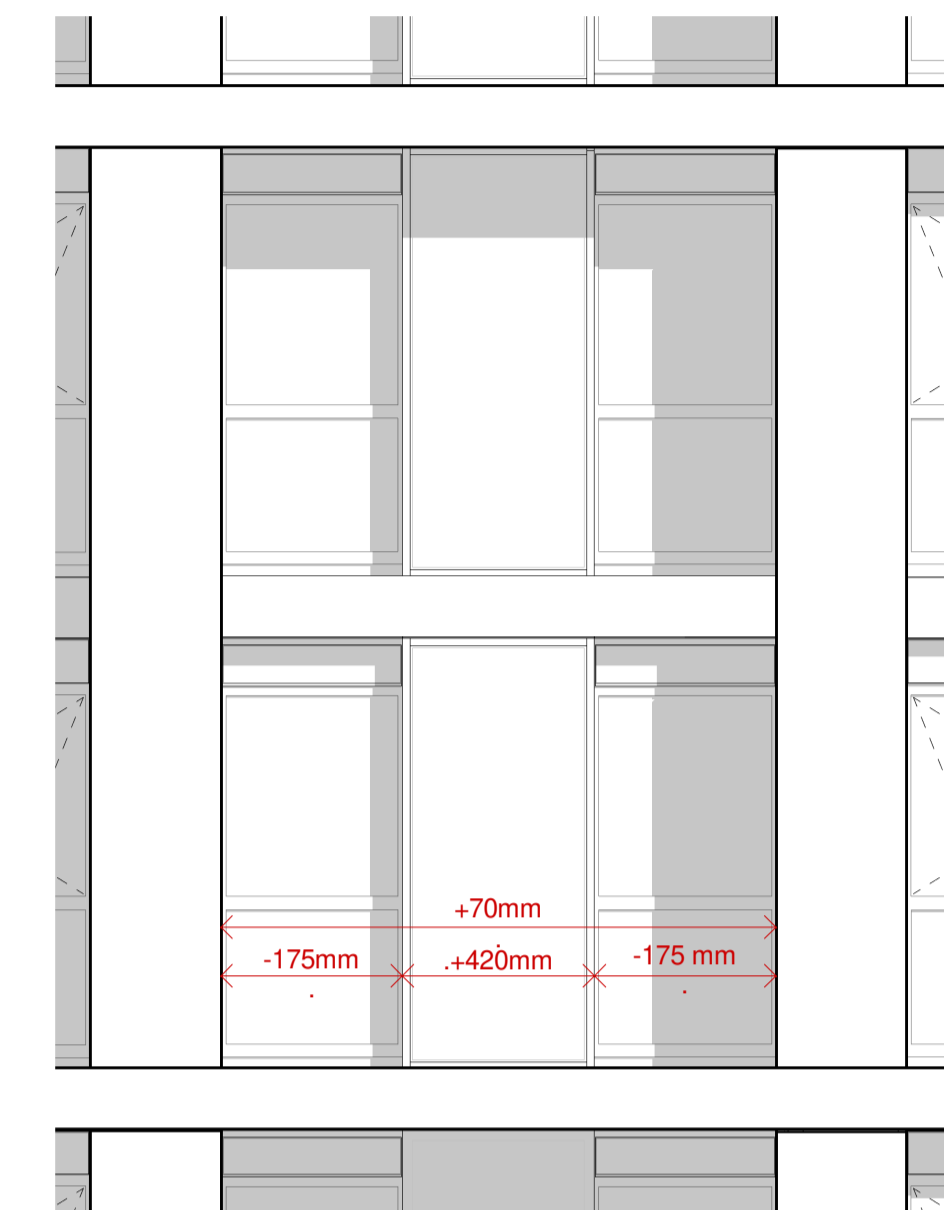


1 Tower North/South - Typical Bay
1 : 50

* Within the overall façade, the setting out of façade elements (ie. windows, piers, panels etc) has been revised to suit developed technical design. These changes are less than 100mm generally.
* Within the overall façade, the detail of the glazing elements (ie frame size, frame design, window / door operation, etc) has been revised to suit developed technical design.



2 Tower North/South 'Spine' - Typical Bay
1 : 50

* Spine marginally increased by 70mm
* Glazing/Solid Panel widths adjusted as shown within zone



3 Tower East/West Elevation- behind Winter Garden glazing - Levels 1 to 12
1 : 50

* Window behind winter garden repositioned
* Changes to facade over 1m behind winter garden glazing at face of building. As a result, visibility is mitigated.



4 Tower East/West Elevation- behind Winter Garden glazing - Levels 13 to 19
1 : 50

* Door behind winter garden repositioned
* Changes to facade over 1m behind winter garden glazing at face of building. As a result, visibility is mitigated.

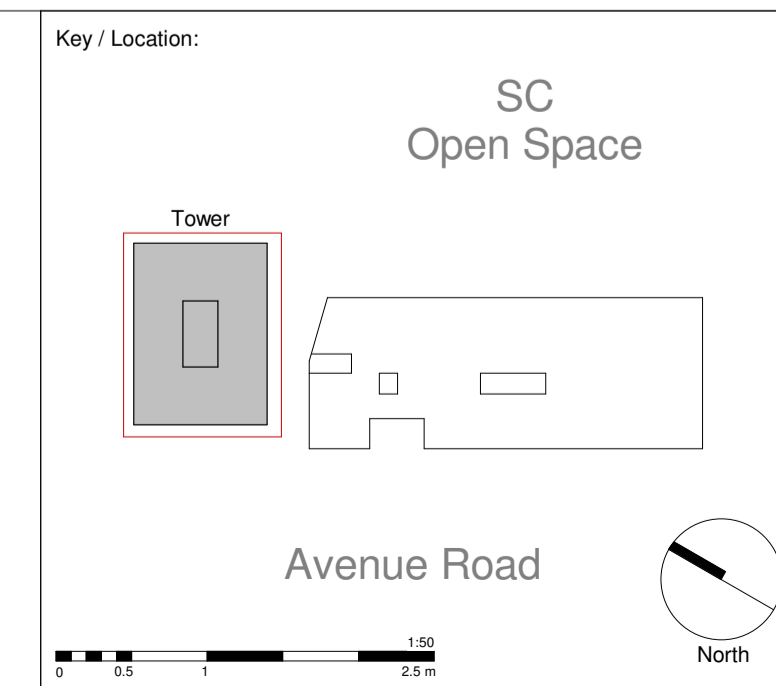
Disclaimer:
 • Do not scale from this drawing.
 • Discrepancies must be reported immediately to the Architect before proceeding.
 • Only figured dimensions are to be used.
 • Check all dimensions on site before fabrication or setting out.
 • This document is copyright and may not be reproduced without permission of the owner.

Rev:	Notes:	Date:	Dwn:	Iss:
P1	NMA Planning Submission	10.07.2017	BCR	MKP
P2	NMA Planning Submission	17.08.2017	BCR	MKP
P3	NMA Planning Submission	30.08.2018	AS	MKP
P4	NMA 2 Planning Submission	21.03.2022	HS	BCR

Refer to SC_GRID_0_A_PL200 and SC_GRID_0_A_PL202 for locations

Purpose of Issue:
ISSUED FOR PLANNING

Previous Sheet Number:
SC_GRID_0_A_PL213



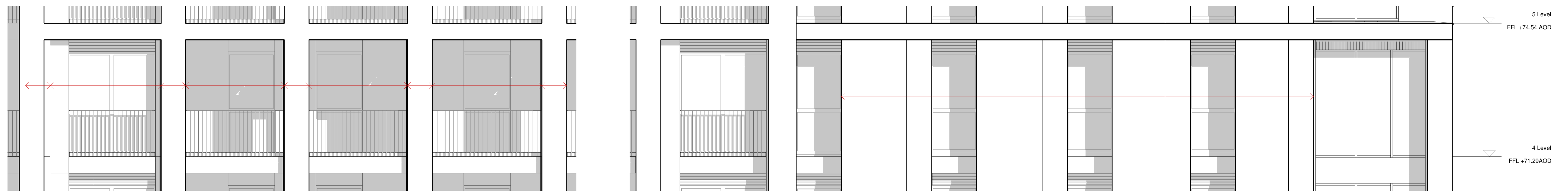
GRID
architects

128 Southwark Street,
London SE1 0SW

+44 (0) 20 7593 3260 info@gridarchitects.co.uk www.gridarchitects.co.uk

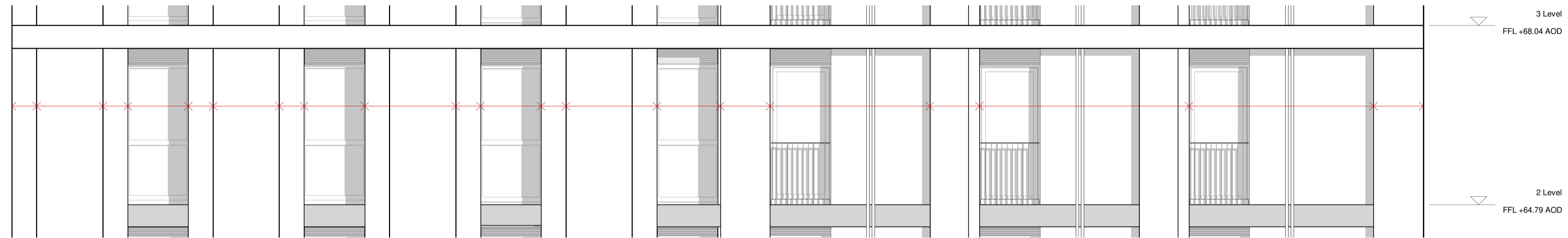
Essential Living

Project: 100 Avenue Road Construction		
Drawing Title: Tower Typical Bays		
Drawn by: JDR	Issued by: MP	Date of First Issue: 10.07.2017
GRID Project No: 15050	Scale @A1: 1 : 50	
Drawing No: SC-GRID-0_A_PL213	Revision: P4	

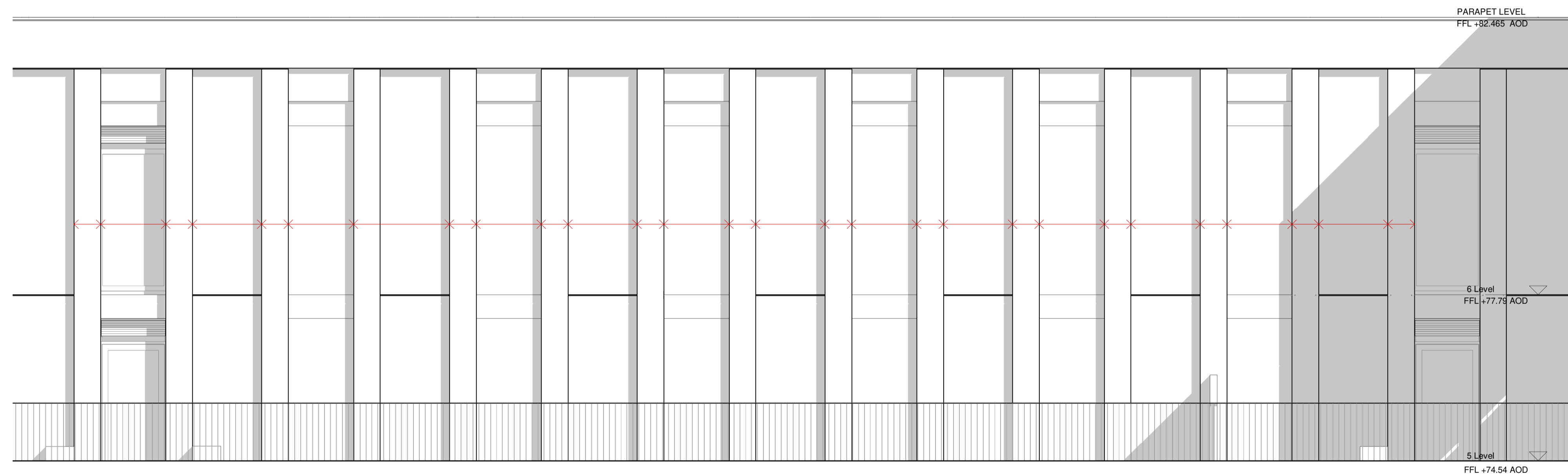


1 Lower Block West Elevation - Typical Bay 1
 1 : 50
 Within the overall façade, the setting out of façade elements (ie. windows, piers, panels etc) has been revised to suit developed technical design. These changes are less than 100mm generally.
 Within the overall façade, the detail of the glazing elements (ie frame size, frame design, window / door operation, etc) has been revised to suit developed technical design.

2 Lower Block West Elevation - Typical Bay 2
 1 : 50
 Within the overall façade, the setting out of façade elements (ie. windows, piers, panels etc) has been revised to suit developed technical design. These changes are less than 100mm generally.
 Within the overall façade, the detail of the glazing elements (ie frame size, frame design, window / door operation, etc) has been revised to suit developed technical design.



3 Lower Block South Elevation - Typical Bay
 1 : 50
 Within the overall façade, the setting out of façade elements (ie. windows, piers, panels etc) has been revised to suit developed technical design. These changes are less than 100mm generally.
 Within the overall façade, the detail of the glazing elements (ie frame size, frame design, window / door operation, etc) has been revised to suit developed technical design.



4 Lower Block East Elevation - Upper Levels Typical Bay
 1 : 50
 Within the overall façade, the setting out of façade elements (ie. windows, piers, panels etc) has been revised to suit developed technical design. These changes are less than 100mm generally.
 Within the overall façade, the detail of the glazing elements (ie frame size, frame design, window / door operation, etc) has been revised to suit developed technical design.

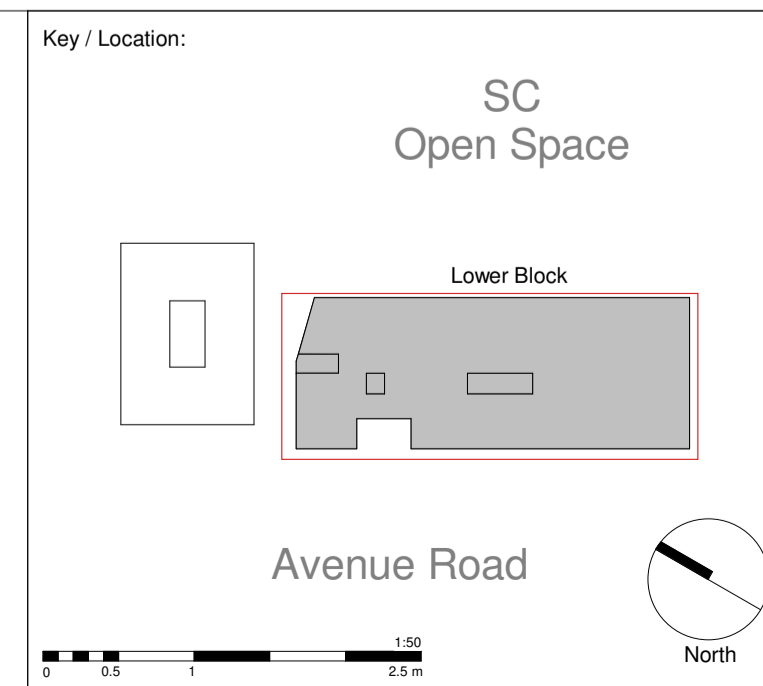
Disclaimer:
 • Do not scale from this drawing.
 • Discrepancies must be reported immediately to the Architect before proceeding.
 • Only figured dimensions are to be used.
 • Check all dimensions on site before fabrication or setting out.
 • This document is copyright and may not be reproduced without permission of the owner.

Purpose of Issue:
 ISSUED FOR PLANNING

Previous Sheet Number:
 SC_GRID_0_A_PL214

Rev:	Notes:	Date:	Dwn:	Iss:
P1	NMA Planning Submission	10.07.2017	BCR	MKP
P2	NMA Planning Submission	17.08.2017	BCR	MKP
P3	NMA Planning Submission	30.08.2018	AS	MKP
P4	NMA 2 Planning Submission	21.03.2022	HS	BCR

Refer to SC_GRID_0_A_PL205 , SC_GRID_0_A_PL206 and SC_GRID_0_A_PL207 for locations



GRID architects
 128 Southwark Street,
 London SE1 0SW
 +44 (0) 20 7593 3260 info@gridarchitects.co.uk www.gridarchitects.co.uk

Essential Living

Project: 100 Avenue Road Construction 100 Avenue Road, London		
Drawing Title: Lower Block Typical Bays		
Drawn by: JDR	Issued by: MKP	Date of First Issue: 10.07.2017
GRID Project No: 15050	Scale @A1: 1 : 50	
Drawing No: SC-GRID-0_A_PL214	Revision: P4	