



SCALE BAR 1:50 @ A1

- LEGEND:**
- VCD = Volume Control Damper
  - SBD = Single Blade Damper
  - CA = Canopy
  - AC = Fan Coil Unit
  - CU = Condenser Unit
  - AHU = Air Handling Unit
  - HRU = Heat Recovery Unit
  - EF = Extract Fan
  - SF = Supply Fan
  - SG = Supply Grille
  - EG = Extract Grille
  - LV = Louvre
  - FT = Filter
  - ODH = Over Door Heater
  - F.O = Flat Oval Duct
  - HB = Heater Battery
  - ATT = Attenuator
  - FD = Fire Damper
  - A/D = Access Door
  - FB = From Below
  - TA = To Above
  - TB = To Below
  - FA = From Above
  - CTS = Cut To Suit On Site
  - TBSM = To Be Site Measured
- = Multi-leaf Volume Control Damper
  - = Single Blade Volume Control Damper
  - = Fire Damper
  - = 90° Bend Facing Upwards
  - = 90° Bend Facing Downwards
  - = Access Door on U/S of Duct
  - = Access Door on Front of Duct
  - = MM from FFL to Center Line of Duct
  - = MM from FFL to U/S of Duct
  - = Ceiling Access Panel
  - = 2hr Fire Rated

- NOTES:**
- Kitchen Extract to have Access Doors within every 2m, except in riser where Access Doors will be installed where Maintenance Access is provided (for example fixed steel platforms). Access doors will always be installed on the side face of ducts to prevent grease leakage/buildup.
  - Kitchen Extract will not have Fire Dampers or VCDs installed in Duct runs.
  - Rectangular Duct flanges are 20mm for Ducts less than 1000m wide and 30mm for Ducts more than 1000m wide.

REV	DATE	COMMENTS
B	06/09/22	Changed Riser to be Circular Duct.
A	23/08/22	Changed wall that supports are fixed to.

Project:  
Tudor House  
23 Rathbone Place/35 Gresse Street  
London W1T 1QY

Title:  
North and East Lightwell Elevations

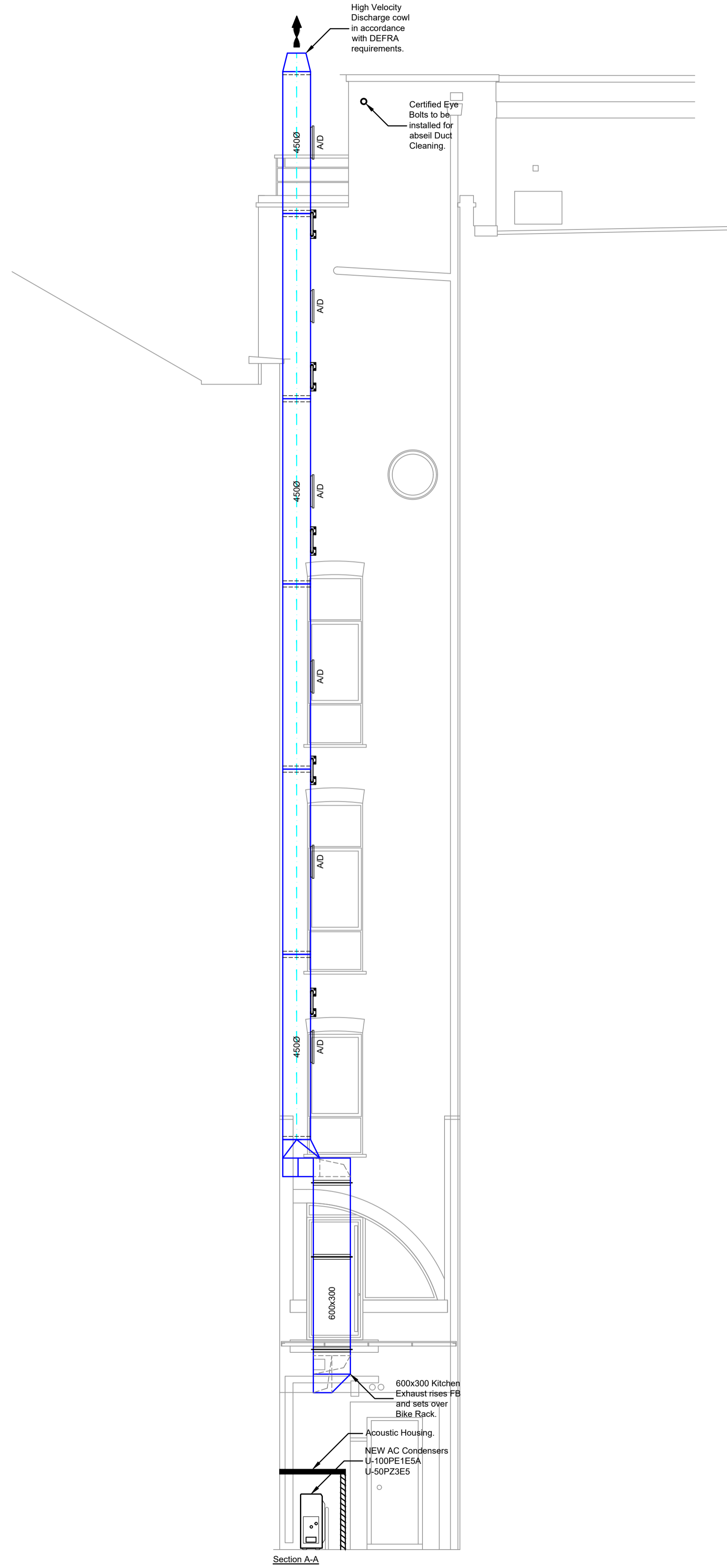
Date:	Scale:
15/03/22	1:50 @ A1
Drawn By:	Checked By:
PM	DV

Drawing No.:  
11892-M03

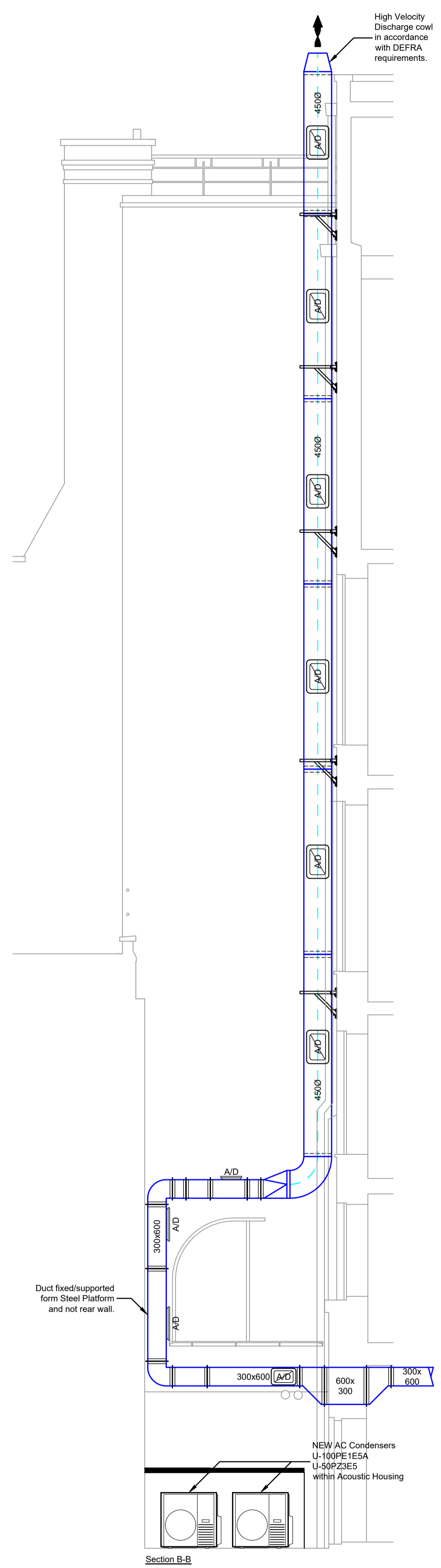
Revision:  
B

**SUMMIT DESIGN LTD.**  
Unit 3, The Courtyard,  
Meadowbanks,  
Furlong Road,  
Bourne End,  
Bucks,  
SL8 5AU

Tel: 01628 536680  
info@summitdesign.co.uk  
www.summitdesign.co.uk



Section A-A



Section B-B