

- LEGEND:**
- VCD = Volume Control Damper
 - SBD = Single Blade Damper
 - CA = Canopy
 - AC = Fan Coil Unit
 - CU = Condenser Unit
 - AHU = Air Handling Unit
 - HRU = Heat Recovery Unit
 - EF = Extract Fan
 - SF = Supply Fan
 - SG = Supply Grille
 - EG = Extract Grille
 - LV = Louvre
 - FT = Filter
 - ODH = Over Door Heater
 - F.O = Flat Oval Duct
 - HB = Heater Battery
 - ATT = Attenuator
 - FD = Fire Damper
 - A/D = Access Door
 - FB = From Below
 - TA = To Above
 - TB = To Below
 - FA = From Above
 - CTS = Cut To Suit On Site
 - TBSM = To Be Site Measured
- = Multi-leaf Volume Control Damper
 - = Single Blade Volume Control Damper
 - = Fire Damper
 - = 90° Bend Facing Upwards
 - = 90° Bend Facing Downwards
 - = Access Door on U/S of Duct
 - = Access Door on Front of Duct
 - = MM from FFL to Center Line of Duct
 - = MM from FFL to U/S of Duct
 - = Ceiling Access Panel
 - = 2hr Fire Rated

- NOTES:**
- Kitchen Extract to have Access Doors within every 2m, except in riser where Access Doors will be installed where Maintenance Access is provided (for example fixed steel platforms). Access doors will always be installed on the side face of ducts to prevent grease leakage/buildup.
 - Kitchen Extract will not have Fire Dampers or VCDs installed in Duct runs.
 - Rectangular Duct flanges are 20mm for Ducts less than 1000m wide and 30mm for Ducts more than 1000m wide.

REV	DATE	COMMENTS
B	22/08/22	Relocated Kitchen Canopy.
A	19/08/22	Added Supply Duct and Door Heater.

Project:
 Tudor House
 23 Rathbone Place/35 Gresse Street
 London W1T 1QY

Title:
 Ground Floor
 Vent Layout

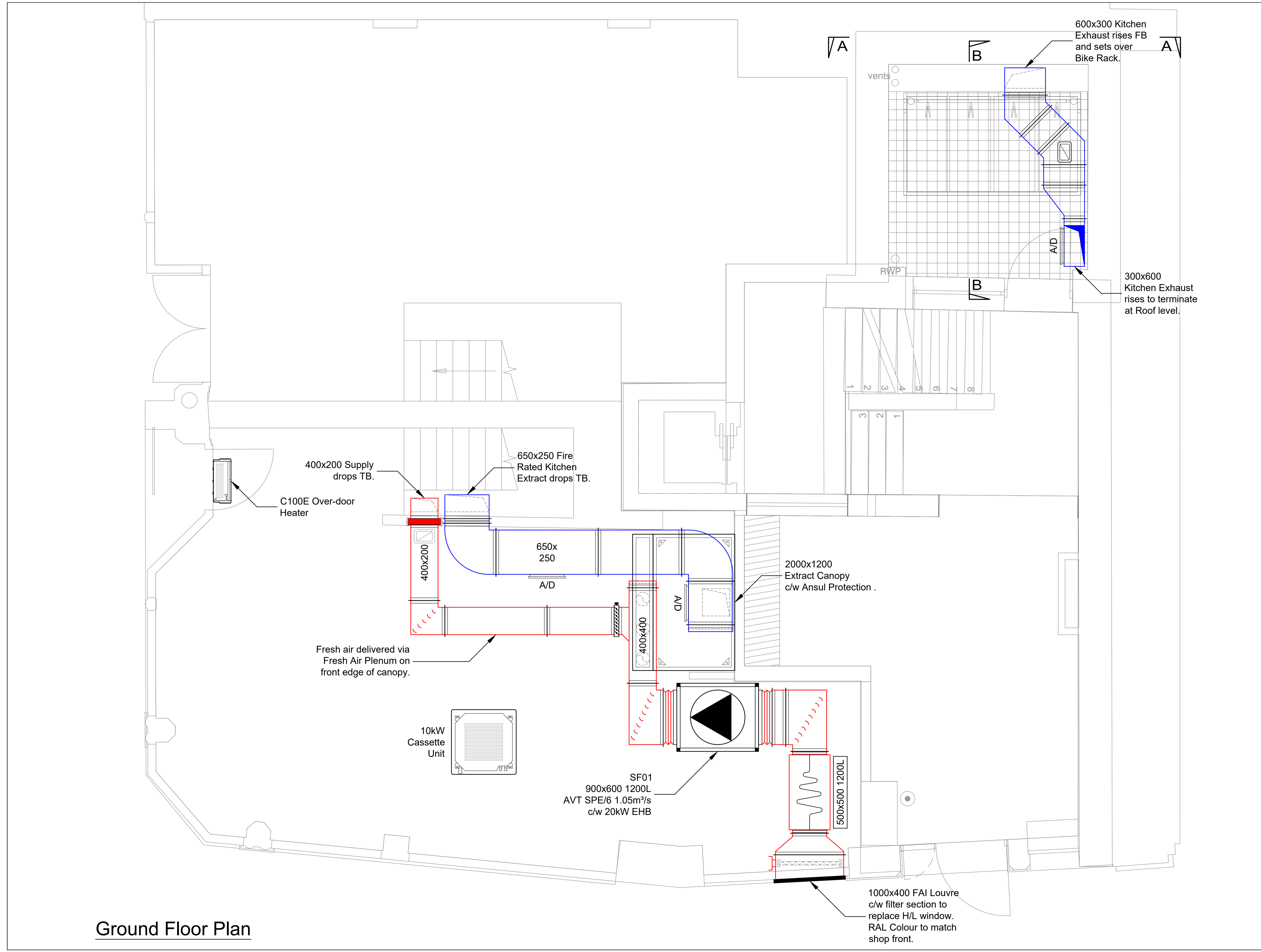
Date:	Scale:
15/03/22	1:25 @ A1
Drawn By:	Checked By:
PM	DV
Drawing No.:	Revision:
11892-M02	B

SUMMIT DESIGN LTD.
 Unit 3, The Courtyard,
 Meadowbanks,
 Furlong Road,
 Bourne End,
 Bucks,
 SL8 5AU

Tel: 01628 536680
 info@summitdesign.co.uk
 www.summitdesign.co.uk



This drawing is the property of Summit Design Limited. Copyright is reserved to them and this drawing is issued on the condition that it is not copied, reproduced, retained or disclosed to any third party without their prior written consent. No. 2702203 Registered in England and Wales.



Ground Floor Plan