

**GENERAL NOTES:**  
 Existing drawings are for reference only - not for approval.  
 Planning Boundary shown is intended to align with proposed West End Project kerb extents along High Holborn, and is based on available information as submitted. Post-submission amendment to as-built kerb line may be required.

**KEY**  
 — Planning Boundary

A 01.06.22 IM Issued For Planning Addendum  
 22.03.21 IM Issued for Planning

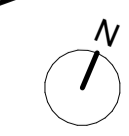
# PLANNING

**DSDHA**  
 357 Kennington Lane London SE11 5QY  
 T 020 7703 3555  
 F 020 7703 3890  
 E info@dshda.co.uk  
 W www.dshda.co.uk

project  
**Museum Street and West Central Street**  
 London, WC1A 1JR  
 drawing title

Existing Third Floor Plan

drawn	size	date	scale
JM	A1	20/01/21	1:200
drawing number	revision		
295_P10.103	A		



REPORT DISCREPANCIES DO NOT SCALE FROM THIS DRAWING COPYRIGHT DSDHA  
 USE LATEST REVISION CHECK DIMENSIONS ON SITE