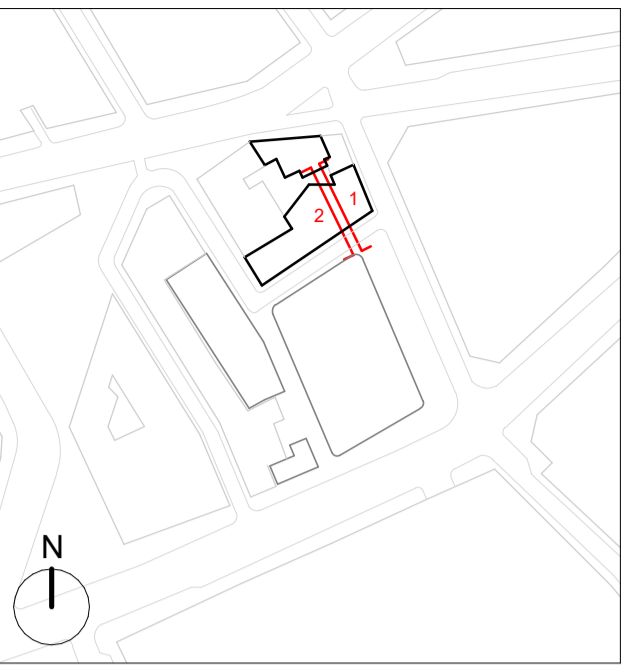


NOTES



GENERAL NOTES:

Planning Boundary shown is intended to align with proposed West End Project kerb extents along High Holborn. Post-submission amendment to asphalt kerb line may be required.

The internal layouts within office floor space, residential apartments and ancillary areas of buildings are indicative and will be subject to design development.

The precise location of walls, internal doors, columns, risers and the detailed layout of office, bathroom and kitchen areas will be the subject of non-material changes and may vary from the internal layouts set out in these plans.

These minor alterations will not affect the position and arrangements of external doors and windows nor will they affect the relative relationship between habitable rooms and windows.

Landscape proposals are indicative only, refer to Landscape drawings for details.

Plant layouts are indicative only.

All materials shown or highlighted are indicative only and may be subject to changes made during detailed design development.

Museum Street landscape proposals are indicative.

Materials Key

1. Timber Shop Front
2. Replacement Timber Retail Entrance
3. Timber Signage Zone
4. Replacement Heritage Style Sash Window
5. Existing Facade: Repaired and repainted
6. Zinc Standing Seam Cladding
7. PPC metalwork: Colour Varies
8. Curtain Walling: Colour Varies
9. GRC Fin Extrusion with Backing Panel
10. Bespoke PPC Guardrail
11. Timber Door
12. Brickwork
13. Brickwork: Corbel Detail
14. Pre-cast Brick Cornice
15. GRC Cladding
16. Insulated Render system and Deco profiles
17. Existing Brickwork: Repaired and Repointed
18. Aluminium Casement Window, Colour Varies
19. Bespoke PPC Aluminium Louvred Door/Gate
20. Acoustic Screen, PPC TBC
21. Ventilation grill

A 01.06.22 IM Issued for Planning Addendum  
 - 22.03.21 IM Issued for Planning

# PLANNING

rev	date	author / check	comments

**DSDHA**  
 357 Kennington Lane London SE11 5QY  
 T 020 7703 3555  
 F 020 7703 3890  
 E info@dshda.co.uk  
 W www.dshda.co.uk

project  
**Museum Street and West Central Street**

London, WC1A 1JR

drawing title

WCS - Courtyard Elevations - Sheet 2

drawn	size	date	scale
Author	A1	22/03/21	1:100
drawing number	revision		

295B\_P30.143 A

REPORT DISCREPANCIES DO NOT SCALE FROM THIS DRAWING COPYRIGHT DSDHA USE LATEST REVISION CHECK DIMENSIONS ON SITE



West Central Street | Site Extents (Courtyard Entrance) | Site Extents (Courtyard)

2 **Courtyard - Proposed - East Elevation**

1:100



Site Extents (35-37 New Oxford Street) | Site Extents (Courtyard) | Site Extents (Courtyard Entrance) | West Central Street

1 **Courtyard - Proposed West Elevation**

1:100

