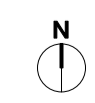


PLANTING SCHEDULE			
RB-Root balled, BR- Bare root, CG-Container grown			
All plants to comply with National Plants Specification, BS 3936, BS 4043 and HTA standards			
Qty	Botanical Name	Density/spacing	Plant type
<b>PERENNIALS</b>			
-	Achillea millefolium	100g per m <sup>2</sup>	seeds
-	Allium schoenoprasum	100g per m <sup>2</sup>	seeds
-	Anthyllis vulneraria	100g per m <sup>2</sup>	seeds
-	Centaurea nigra	100g per m <sup>2</sup>	seeds
-	Cerastium fontanum	100g per m <sup>2</sup>	seeds
-	Clinopodium vulgare	100g per m <sup>2</sup>	seeds
-	Daucus carota	100g per m <sup>2</sup>	seeds
-	Filipendula vulgaris	100g per m <sup>2</sup>	seeds
-	Galium verum	100g per m <sup>2</sup>	seeds
-	Hippocrepis comosa	100g per m <sup>2</sup>	seeds
-	Hypochaeris radicata	100g per m <sup>2</sup>	seeds
-	Knautia arvensis	100g per m <sup>2</sup>	seeds
-	Leontodon hispidus	100g per m <sup>2</sup>	seeds
-	Leucanthemum vulgare	100g per m <sup>2</sup>	seeds
-	Lotus corniculatus	100g per m <sup>2</sup>	seeds
-	Malva moschata	100g per m <sup>2</sup>	seeds
-	Origanum vulgare	100g per m <sup>2</sup>	seeds
-	Pimpinella saxifraga	100g per m <sup>2</sup>	seeds
-	Plantago lanceolata	100g per m <sup>2</sup>	seeds
-	Plantago media	100g per m <sup>2</sup>	seeds
-	Poterium sanguisorba	100g per m <sup>2</sup>	seeds
-	Prunella vulgaris	100g per m <sup>2</sup>	seeds
-	Reseda lutea	100g per m <sup>2</sup>	seeds
-	Salvia verbenacea	100g per m <sup>2</sup>	seeds
-	Scabiosa columbaria	100g per m <sup>2</sup>	seeds
-	Scorzoneroides autumnalis	100g per m <sup>2</sup>	seeds
-	Sedum acre	100g per m <sup>2</sup>	seeds
-	Sedum album	100g per m <sup>2</sup>	seeds
-	Silene dioica	100g per m <sup>2</sup>	seeds
-	Silene vulgaris	100g per m <sup>2</sup>	seeds
-	Trifolium dubium	100g per m <sup>2</sup>	seeds
-	Thymus polytrichus	100g per m <sup>2</sup>	seeds
<b>BIENNIALS</b>			
-	Echium vulgare	100g per m <sup>2</sup>	seeds
-	Verbascum thapsus	100g per m <sup>2</sup>	seeds
-	Carduus tenuifolius	100g per m <sup>2</sup>	seeds
<b>ANNUALS</b>			
-	Filago vulgaris	100g per m <sup>2</sup>	seeds
-	Linaria vulgaris	100g per m <sup>2</sup>	seeds
-	Trifolium arvense	100g per m <sup>2</sup>	seeds
-	Sisymbrium irio	100g per m <sup>2</sup>	seeds

KEY  
 Green roof (210 m<sup>2</sup>)

NOTE: the landscape design is indicative



**Bradley-Hole Schoenich**  
 Landscape Architects  
 Greystone House  
 Sudbrook Lane  
 Richmond TW10 7AT  
 +44 (0)20 8939 1140  
 info@bhsa.co.uk

Project	1 Museum Street
Client	DSdHA
Dwg title	1MS - Level 19 Roof level - Planting
Dwg nr	295A_DSD-1MS-19-DR-L-20.137
Scale	1:100 @A1
Status	Planning
Drawn	SR
Checked	VG

REV	DATE	DESCRIPTION	CHKD
A	01/06/2022	issued for planning	VG

NOTE:  
 1. Do not scale from this drawing.  
 2. All setting out, levels and dimensions to be agreed on site.  
 3. This drawing must be read with the relevant specification clauses and detail drawings prepared by BHSI and other relevant Consultants.  
 4. Order of construction and setting out to be agreed on site.  
 5. This drawing is copyright protected and may not be reproduced in whole or part without written authority.  
 6. All Dimensions are in millimetres unless otherwise stated.