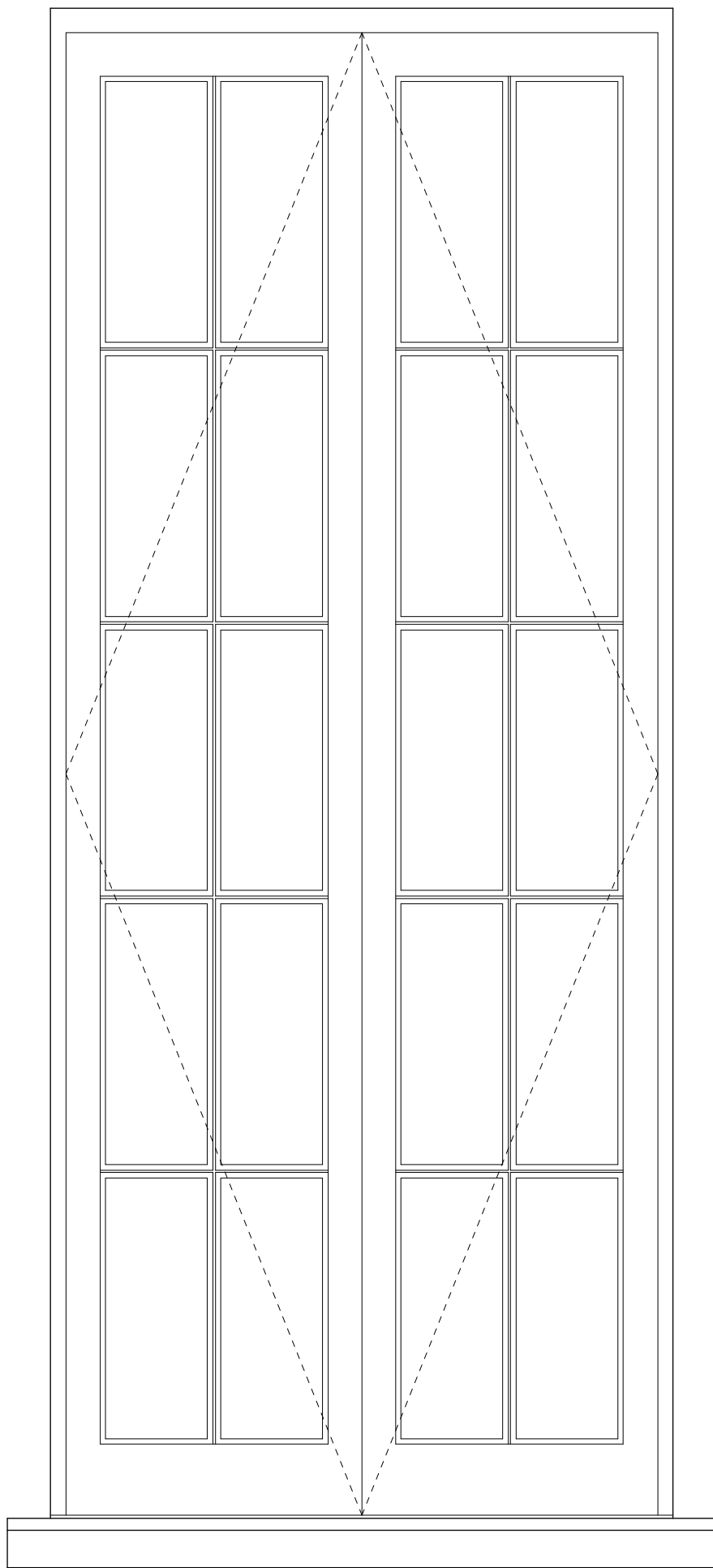


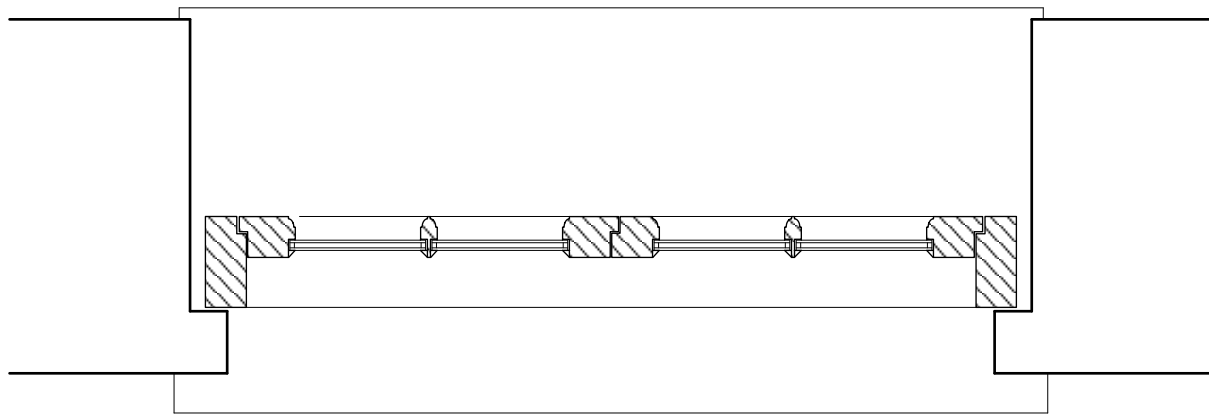
01 GF-W01 Section



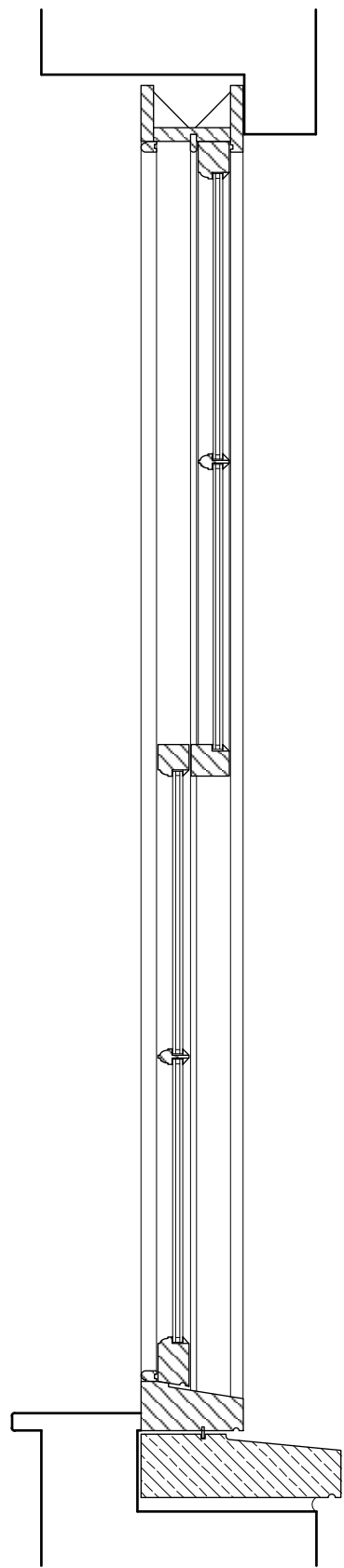
02 GF-W01 Elevation

Window GF-W01

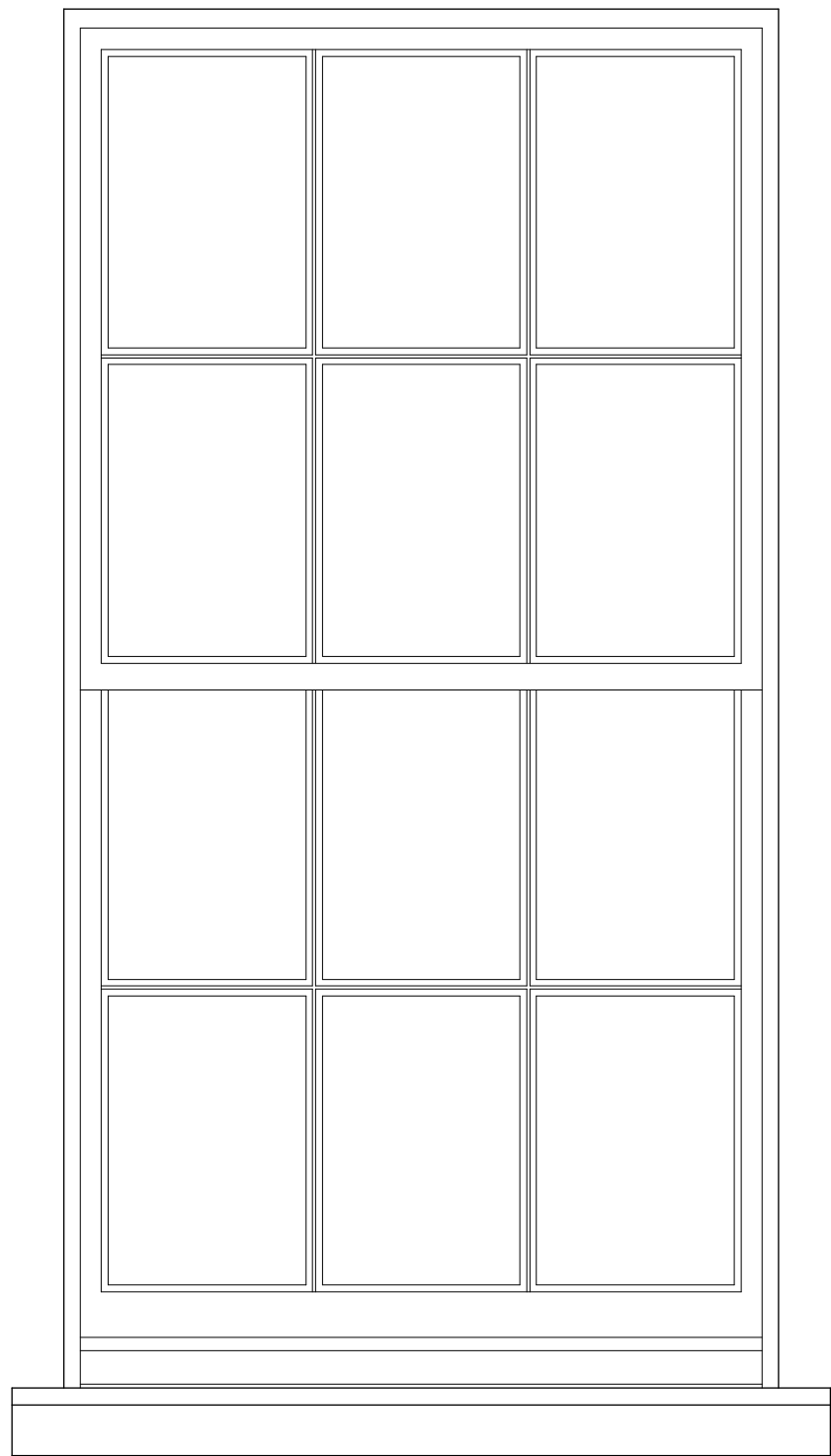
White painted timber french doors with slim double glazing (4/6/4mm) and structural glazing bars (ovolo mouldings, approximately 22mm thick). The same specification applies to all replacement french doors on the first floor.



03 GF-W01 Plan



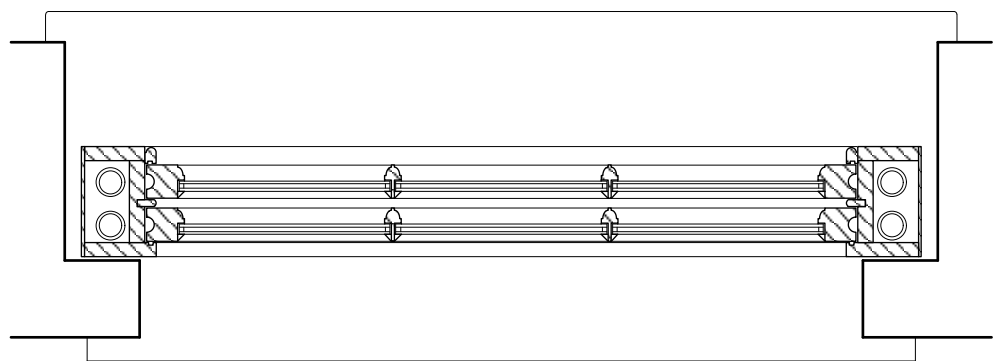
01 1F-W01 Section



02 1F-W01 Elevation

Window 1F-W01

6 over 6 pane, white painted timber vertical sliding sashes with slim double glazing (4/6/4mm) and structural glazing bars (ovolo mouldings, approximately 22mm thick). The same specification applies to all replacement sash windows on the first floor.



03 1F-W01 Plan

General Notes			
- All dimensions to be verified on site			
- To be read in conjunction with all relevant documents			
- In the event of discrepancy notify the Architect immediately			
- All steel structural elements to be finished with intumescent coating.			
30 minutes fire resistance. For all structural elements and connection see SE drawings.			
- This document is copyright of Hugh Cullum Architects Ltd			
Issue Status			
- SK Sketch	- T Tender	- P Permissions	
- D Design	- E Existing Condition	- C Contract	
rev	note	date	(drawn by/checked by)
(_) :	Issued for Planning	22.08.23	(TS / HC)

GENERAL DRAWING LEGEND	
	Existing Building Section
	New Building Section
	New Insulation
	New Joinery Section - Windows, Doors Etc
	New Joinery Interior - Wardrobes, Cupboards Etc
	Structure Above
	Structure Below
	Ground
	Site Boundary (Assumed)