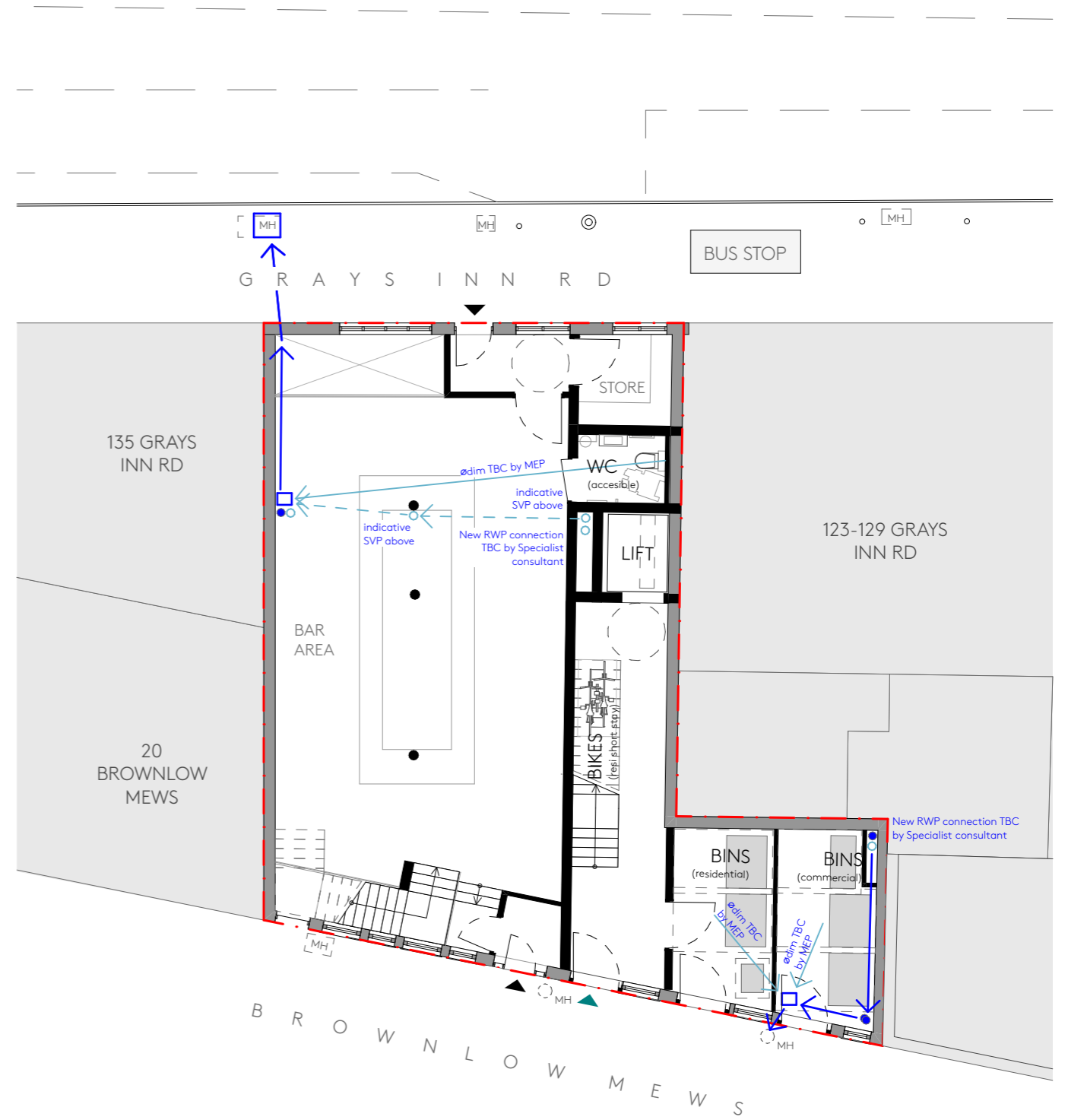


Assumed Existing Drainage



Indicative Proposed Drainage

DRAFT- FOR INFORMATION ONLY
TBC with CCTV Survey and designed by Specialist

Ackroyd Lowrie
 23 Vyner Street
 London E2 9DG
 0203 770 9780
 www.ackroydlowrie.com

Rev.	Date	Comment

Notes
 DO NOT SCALE FROM THIS DRAWING.
 DO NOT USE ANY AREAS INDICATED FOR EITHER VALUATION, PURCHASE SALE OR ANY OTHER FORM OF LEGALLY BINDING CONTRACT.
 DO NOT REPRODUCE ANY PART OF THIS DRAWING WITHOUT PRIOR WRITTEN CONSENT. THIS DRAWING REMAINS THE COPYRIGHT OF ACKROYD LOWRIE LTD.

- Key**
- Site boundary
 - Assumed existing drainage. CCTV survey required to confirm
 - Indicative proposed drainage connections to exiting. To be confirmed by Specialist (MEP/Civils Engineer)



Project 754 - The Blue Lion, Clerkenwell		Dwg Title Indicative Drainage plans			
Client Lambournes Surveyors Ltd		Dwg No. 754-570			
Date	Drawn	Checked	Scale	Current Stage	Issue
Mar 2022	NB	MA	A3 1:150 A1 1:75	Planning	