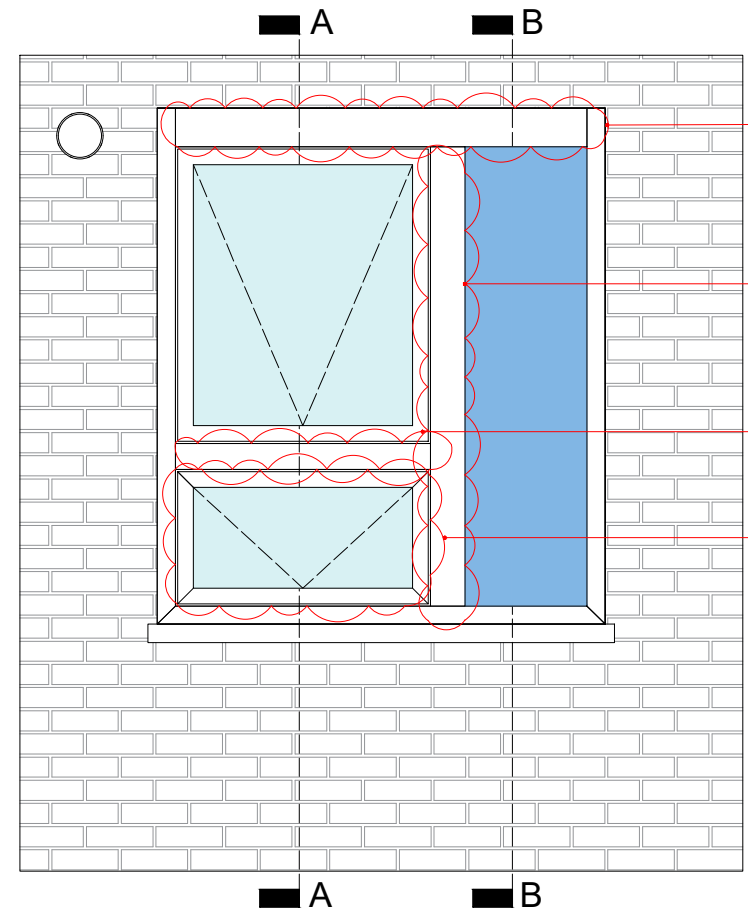
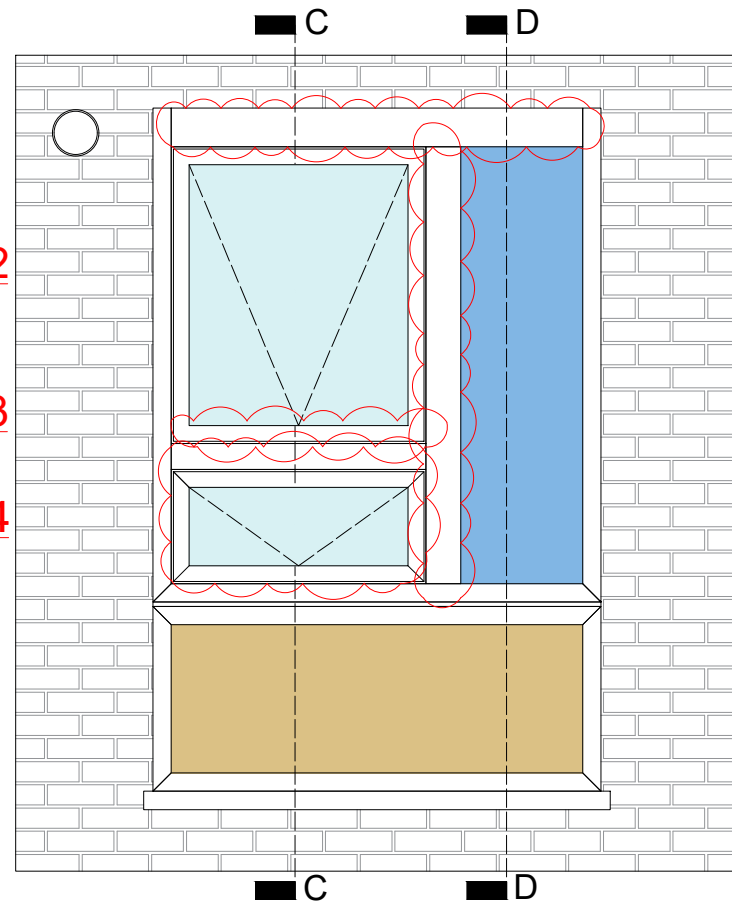


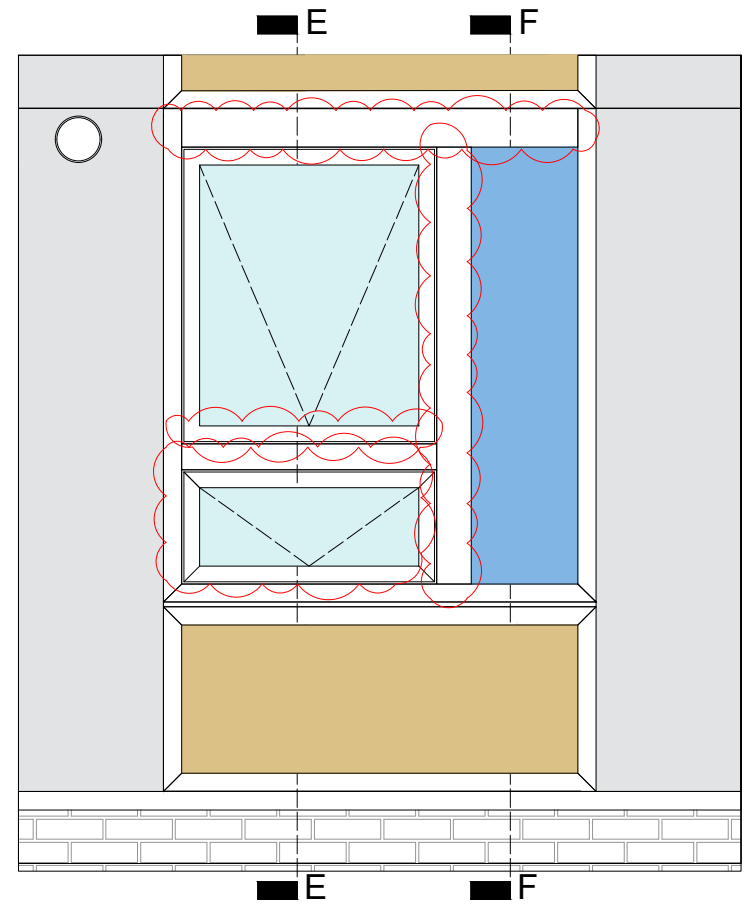
KITCHEN WINDOW AT GROUND FLOOR



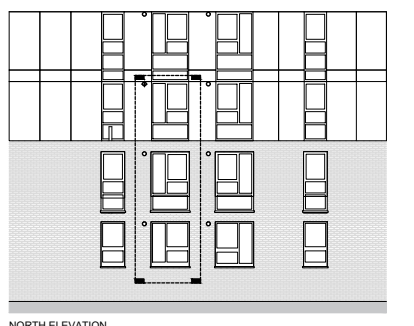
KITCHEN WINDOW AT FLOOR 1



KITCHEN WINDOW AT FLOOR 2

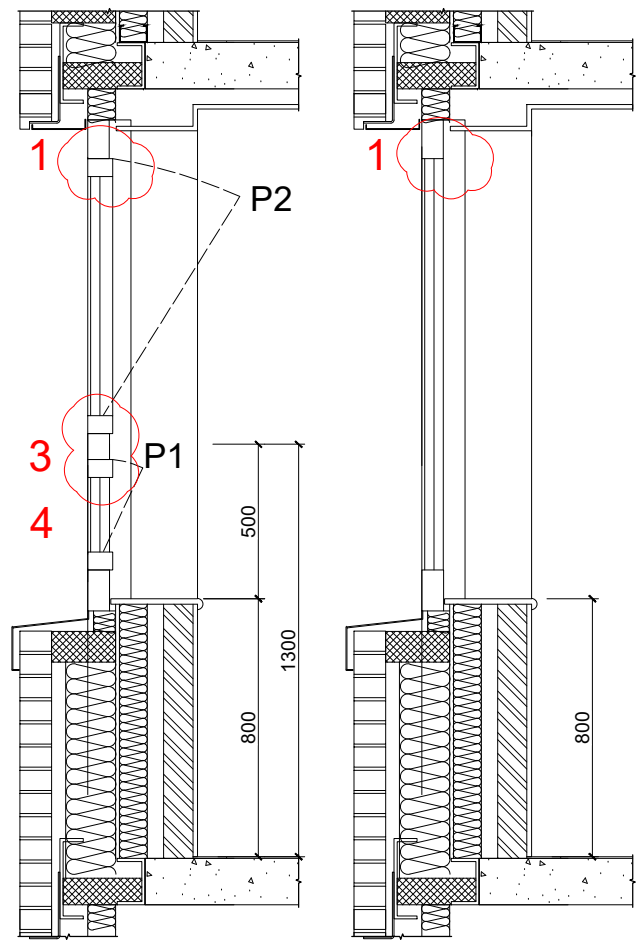


THIS DRAWING AND THE INFORMATION IT CONTAINS ARE THE PROPERTY OF ARUP FACADE ENGINEERING.
 DESIGN RISKS AND ASSUMPTIONS ARE PART OF THE CDM RISK REGISTER.
 READ THIS DRAWING IN CONJUNCTION TO THE CDM RISK REGISTER.
 THE DRAWING CONTENT REFLECTS THE DESIGN INTENT ONLY AND IS NOT FOR CONSTRUCTION.
 NOTE: DIMENSIONS SHOWN ARE NOMINAL. TO BE VERIFIED BY SURVEY INFORMATION.
 SOPS TO BE CONFIRMED BY THE CONTRACTOR FOLLOWING THE SURVEYS.



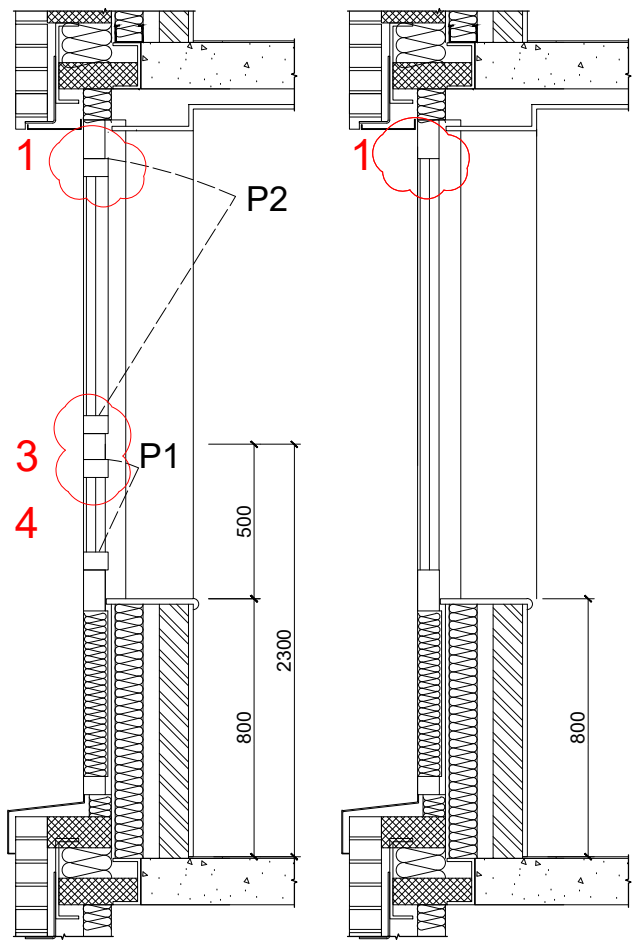
NORTH ELEVATION

02	28/07/2022
01	30/11/2020
Rev	Date



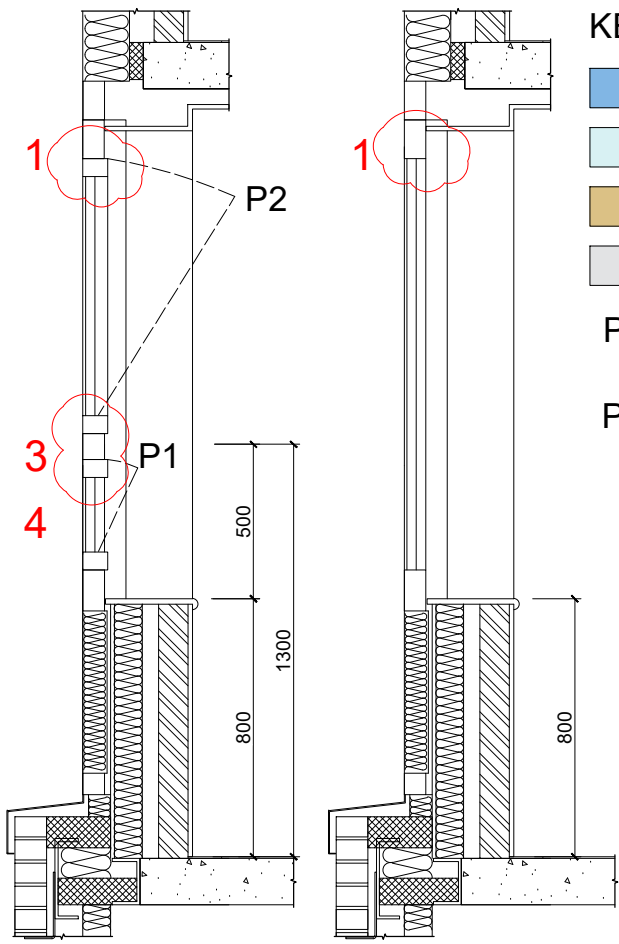
SECTION A-A

SECTION B-B



SECTION C-C

SECTION D-D



SECTION E-E

SECTION F-F

- KEY**
- Fixed glazing
 - Window glazing
 - Spandrel panel
 - Rainscreen cladding
 - P1** Opening position 1 - 100mm opening in tilt mode
 - P2** Opening position 2 - Tilt windows open to maximum 32° with adjustable intermediate position via manual control
 - 1** Top frame increased from 70mm to 125mm
 - 2** Mullion increased from 70mm to 112mm
 - 3** Transom increased from 70mm to 84mm
 - 4** New kitchen vent

ARUP

8 Fitzroy Street
 London W1T 4BJ
 Tel +44 (0)20 7636 1531 Fax +44 (0)20 7580 3924
 www.arup.com

Client
 London Borough of Camden

Project Title
 Bray, Burnham, Dorney, Taplow
 Towers Major Works Project

Drawing Title
 Bray, Burnham, Dorney and Taplow
 Tower
 Window System Options Diagram -
 Podium level
 Proposed - Type 2 (lowered sill
 level)
 Scale at A3 1 : 25

Role
 FAÇADE ENGINEERING

Suitability
 Planning

Arup Job No
259493-00 Rev
02

Name
259493-ARUP-T0-ZZ-DR-YC-5251