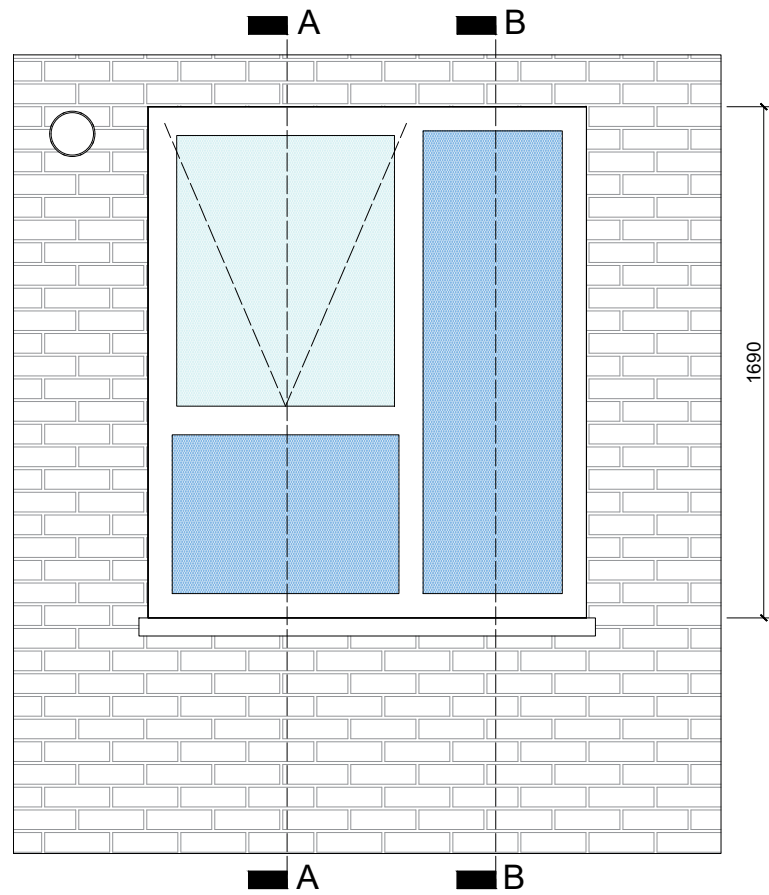
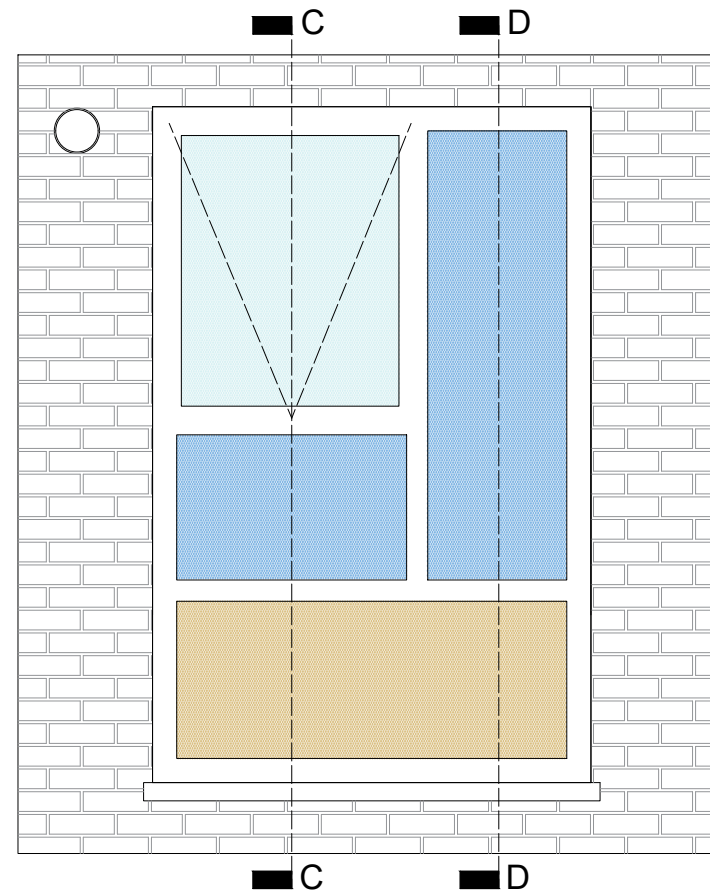


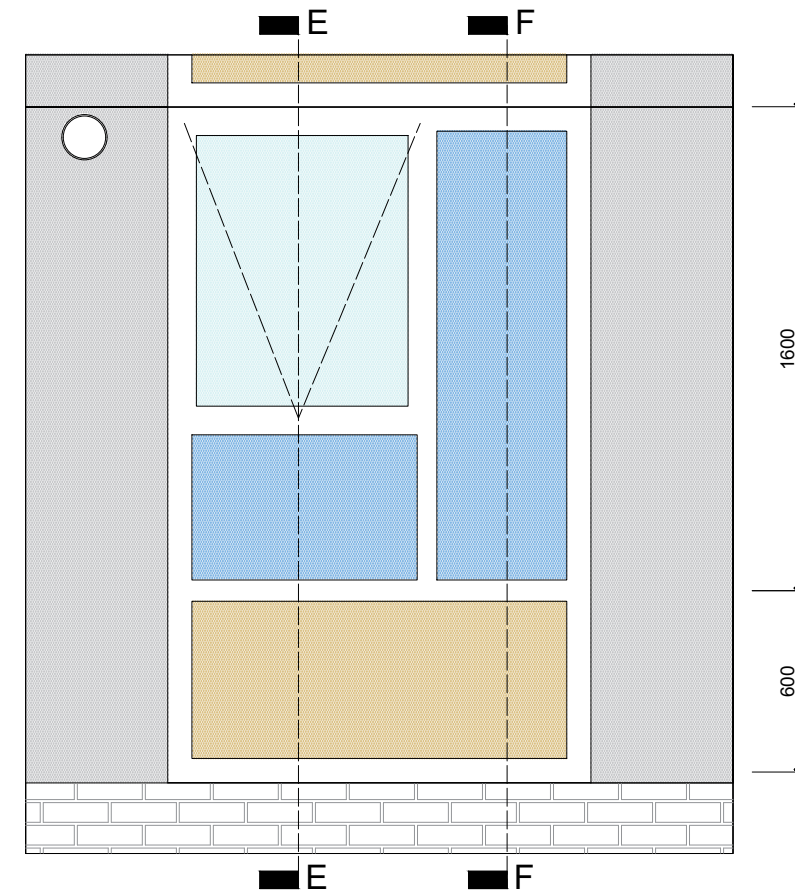
WINDOW AT GROUND FLOOR



WINDOW AT FLOOR 1



WINDOW AT FLOOR 2



THIS DRAWING AND THE INFORMATION IT CONTAINS ARE THE PROPERTY OF ARUP FAÇADE ENGINEERING.

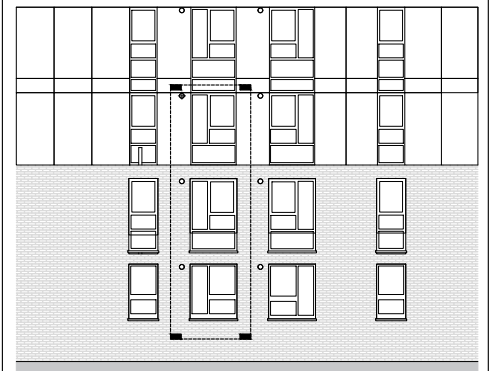
DESIGN RISKS AND ASSUMPTIONS ARE PART OF THE CDM RISK REGISTER.

READ THIS DRAWING IN CONJUNCTION TO THE CDM RISK REGISTER.

THE DRAWING CONTENT REFLECTS THE DESIGN INTENT ONLY AND IS NOT FOR CONSTRUCTION.

NOTE: DIMENSIONS SHOWN ARE NOMINAL. TO BE VERIFIED BY SURVEY INFORMATION.

SOPS TO BE CONFIRMED BY THE CONTRACTOR FOLLOWING THE SURVEYS.



NORTH ELEVATION

01	30/11/2020		
Rev	Date		

# ARUP

13 Fitzroy Street  
 London W1T 4BQ  
 Tel +44 (0)20 7636 1531 Fax +44 (0)20 7580 3924  
 www.arup.com

Client  
 London Borough of Camden

Project Title  
 Chalcots Estate, London

Drawing Title  
 Bray, Burnham, Dorney and Taplow,  
 Tower  
 Window System Options Diagram -  
 Podium level  
 Approved - Type 2 (existing sill level)

Scale at A3  
 1 : 25

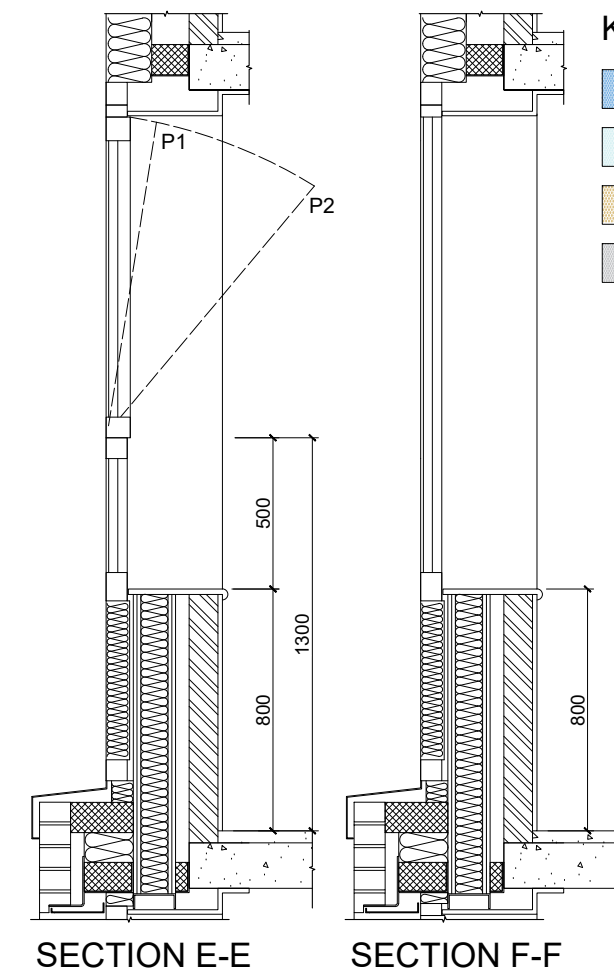
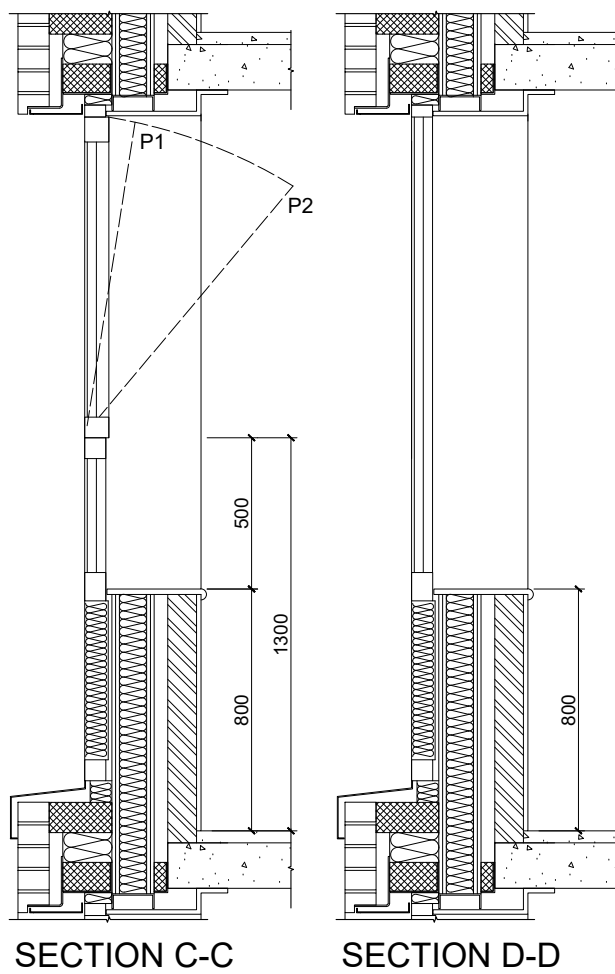
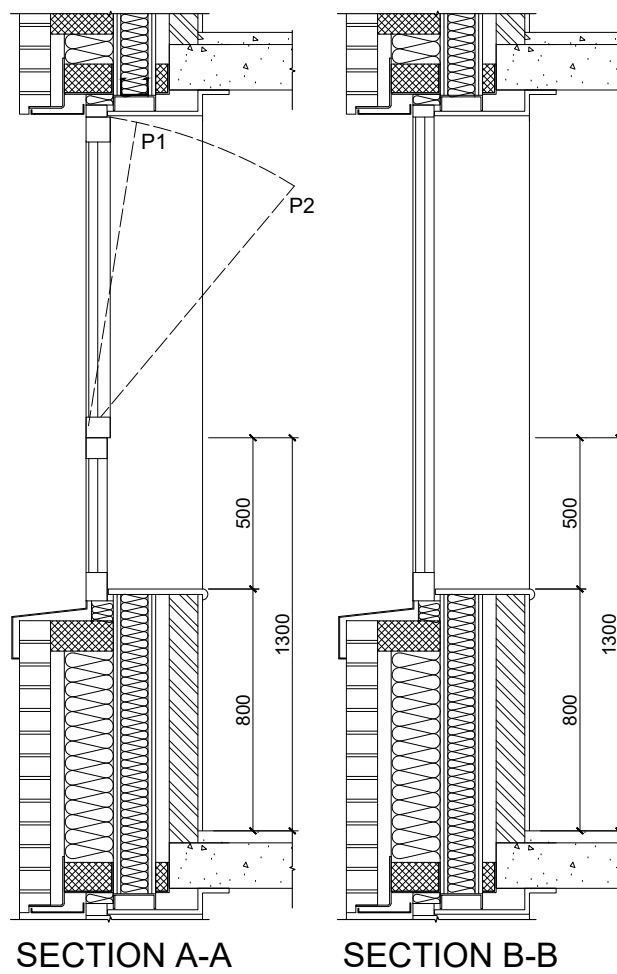
Role  
 FAÇADE ENGINEERING

Suitability  
 STAGE 3 UPDATE

Arup Job No  
**259493-00**

Rev  
**01**

Name  
**259493-ARUP-T0-ZZ-DR-YC-5251**



- KEY**
- Fixed glazing
  - Window glazing
  - Spandrel panel
  - Rainscreen cladding
  - P1** Opening position 1 - 100mm opening in tilt mode
  - P2** Opening position 2 - 40° opening in tilt mode

SECTION A-A

SECTION B-B

SECTION C-C

SECTION D-D

SECTION E-E

SECTION F-F