

17A Canfield Gardens, London, NW6 3JP

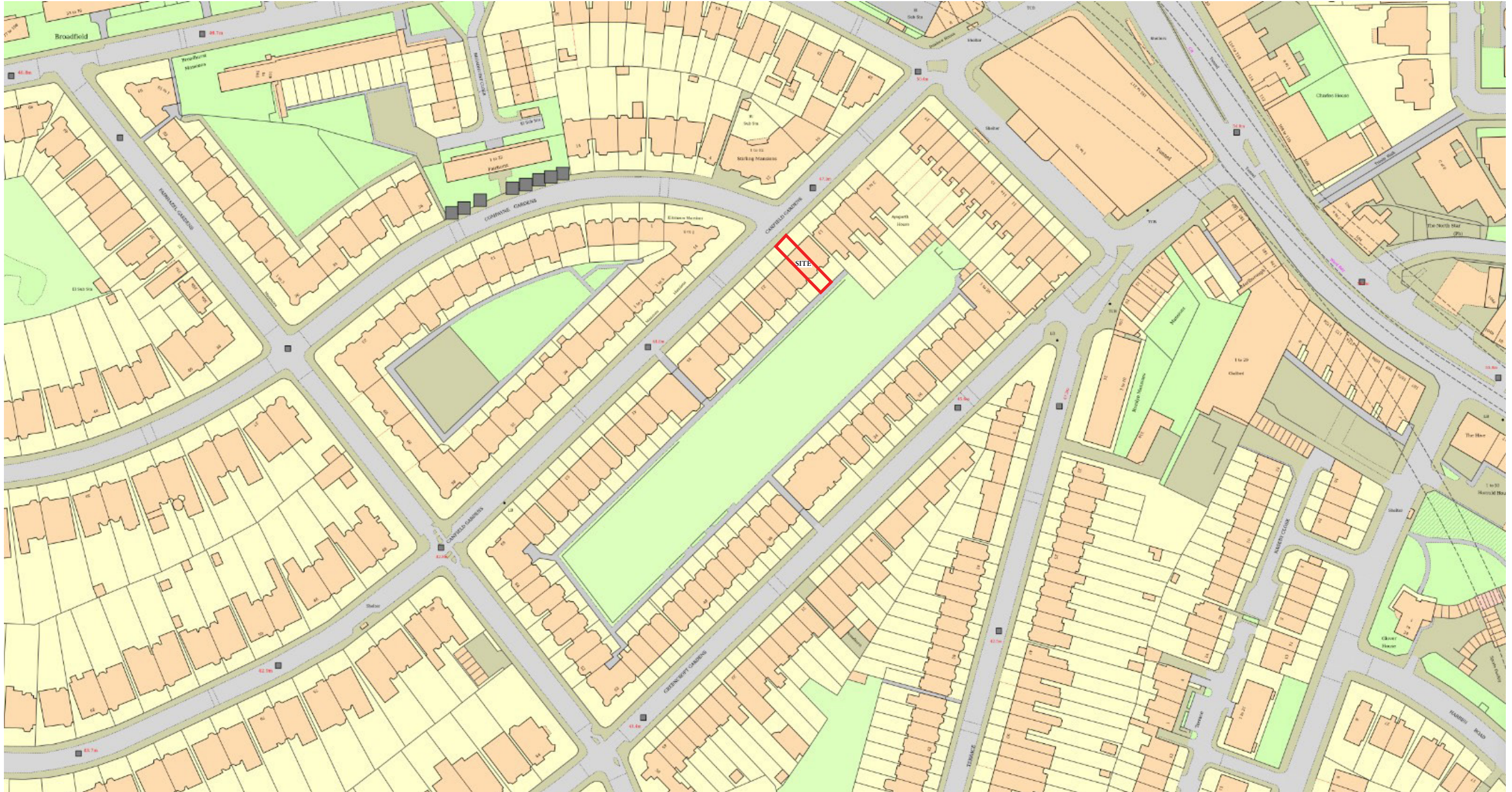
---

September 2022



## Introduction

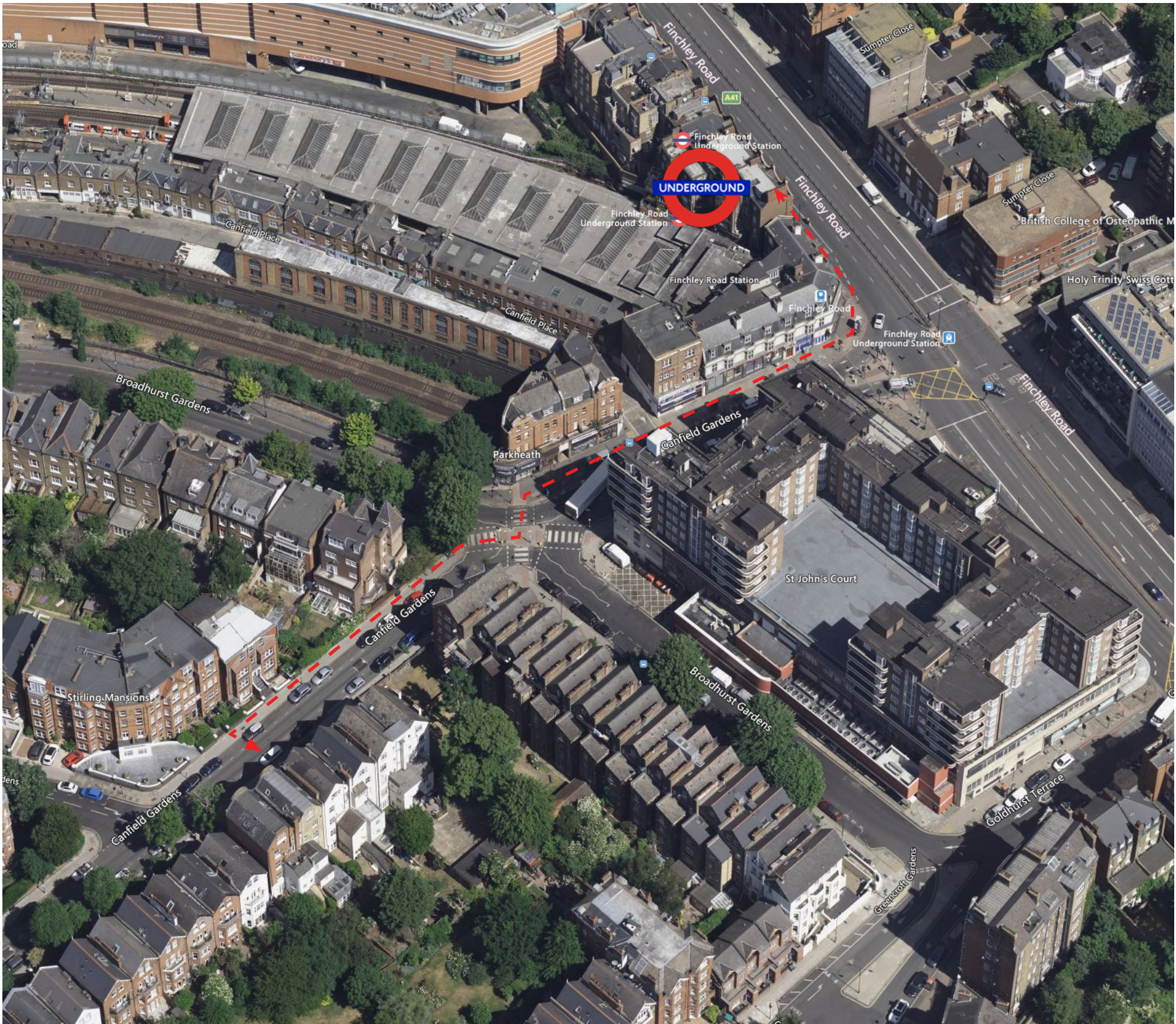
17A Canfield Gardens is an existing two storey apartment located in the North East corner of Canfield Gardens.





Public Transport

The apartment lies a 3 minute walk from Finchley Road Station so is very well connected to public transport.



(above) Existing aerial photograph



Existing Photos

The existing building is a red brick, 4 storey terraced house,. It has been previously converted into two apartments (a two bed LGF+GF apartment and a two bed FF+SF apartment).



(above) Front of building



(above) Existing doors to property



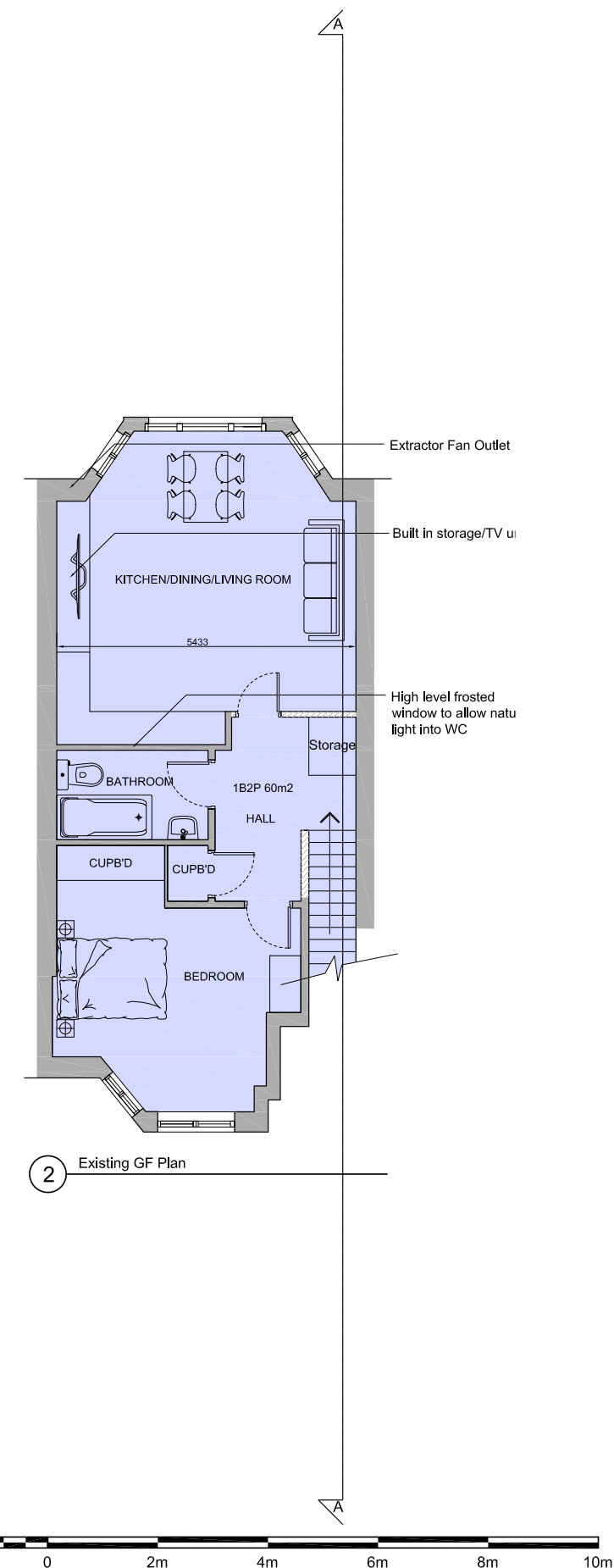
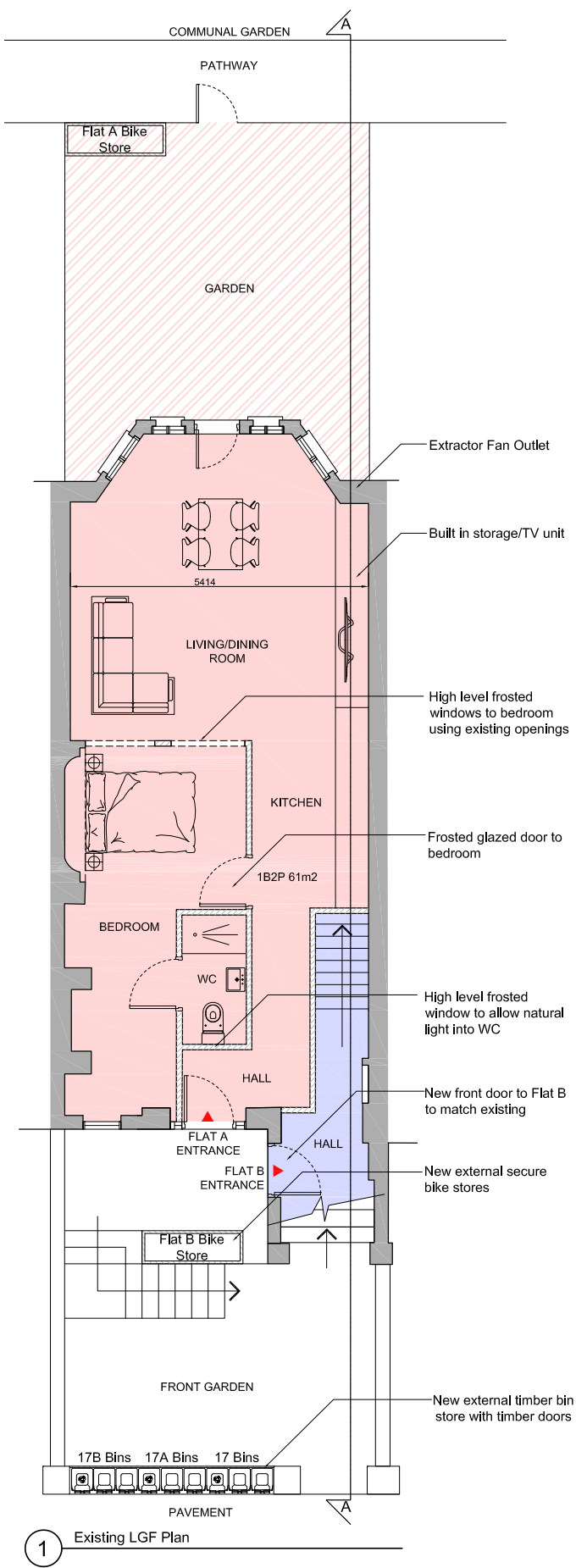
(above) Existing internal photographs



Proposal

The proposal is to split the existing 2 bed maisonette into two one bed apartments:

LGF: 1B2P 61m2  
GF: 1B2P 60m2





## Access to Communal Gardens

The LGF flat apartment will have direct access to the communal apartments from its rear garden.

The FF apartment will have access to the private communal gardens via key fob. See plan below for access arrangements for the FF apartment.

