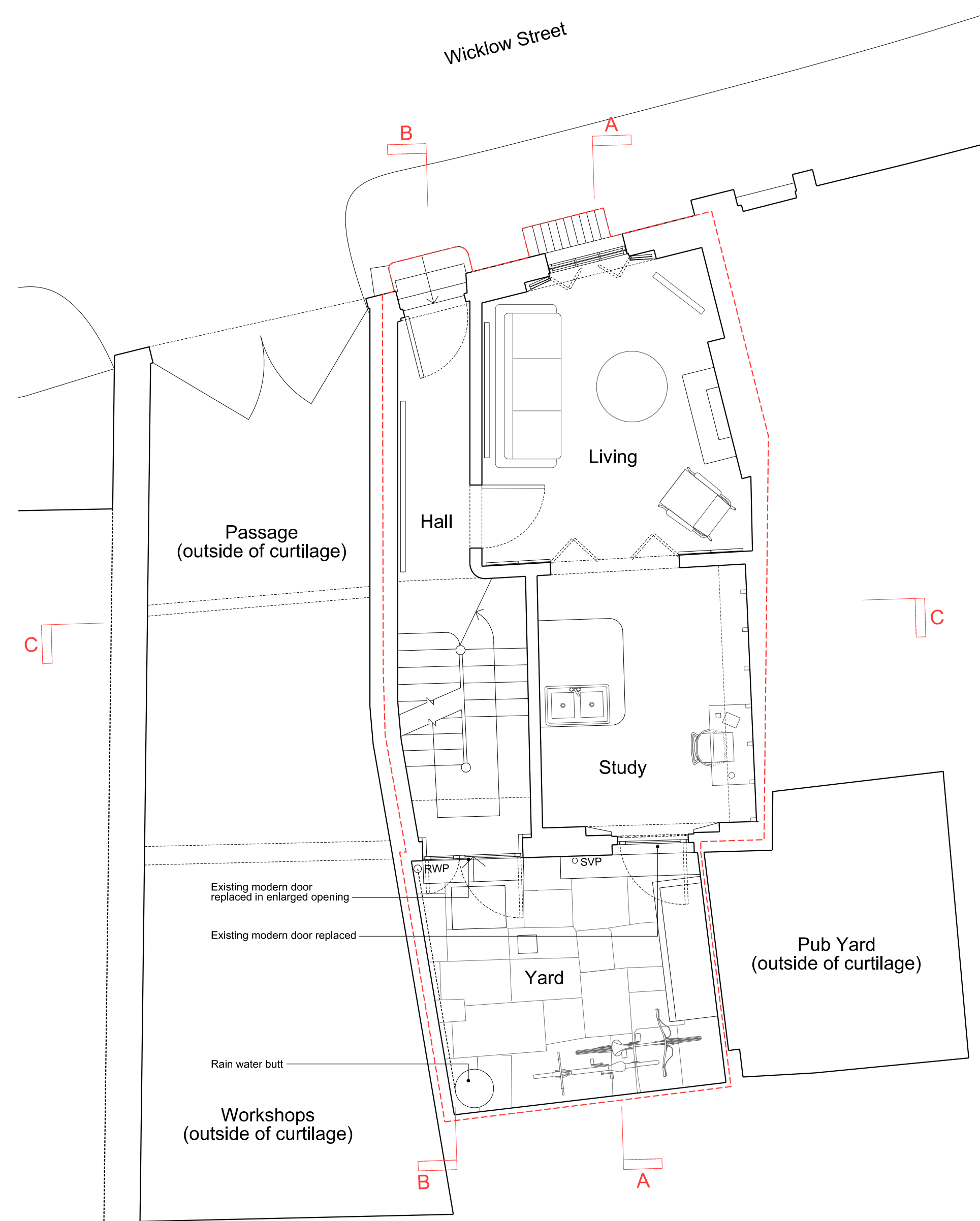
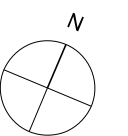


Lower Ground Floor Plan



Ground Floor Plan



Scale: 0 0.5 1 1.5 2 2.5m

Planning Issue

Proposed

Lower Ground + Ground Floor Plan

103 Wicklow Street
Casswell Bank Architects
3a Trafalgar Mews, London, E9 5JG
tel 020 8525 1395

Scale Date Drwg
1:50 @ A1 15.08.22 103_L12_01