

DRAINAGE INSTALLATION METHOD STATEMENT.
26 NEW END SQUARE, LONDON, NW3 1LS
SEPTEMBER 2022.

Arboricultural Solutions LLP

3 Walnut Close
Peterborough
Cambridgeshire
PE7 1LL



ARBORICULTURAL CONSULTANTS

Drainage Runs within RPA of Tree 1 (Oak) at 26 New End Square.

1.1.1. We have been provided with a drawing which details the locations of the existing and proposed drainage routes in the vicinity of tree 1 and the alterations or new installations required. Within the RPA of the retained tree these works include:

- New manhole (MH02) to be excavated at the perimeter of the RPA.
- Excavations for new drain connections from the existing manhole (EXMH01) to new manhole (MH02).

1.1.2. Any work in RPAs **must** be carried out with care. On this site special precautions **must** be taken near retained trees (refer to drawing TPP_26NEWENDSQ_2 Rev A for locations of Special Precaution Areas).

These works will be monitored and supervised by Arboricultural Solutions LLP.

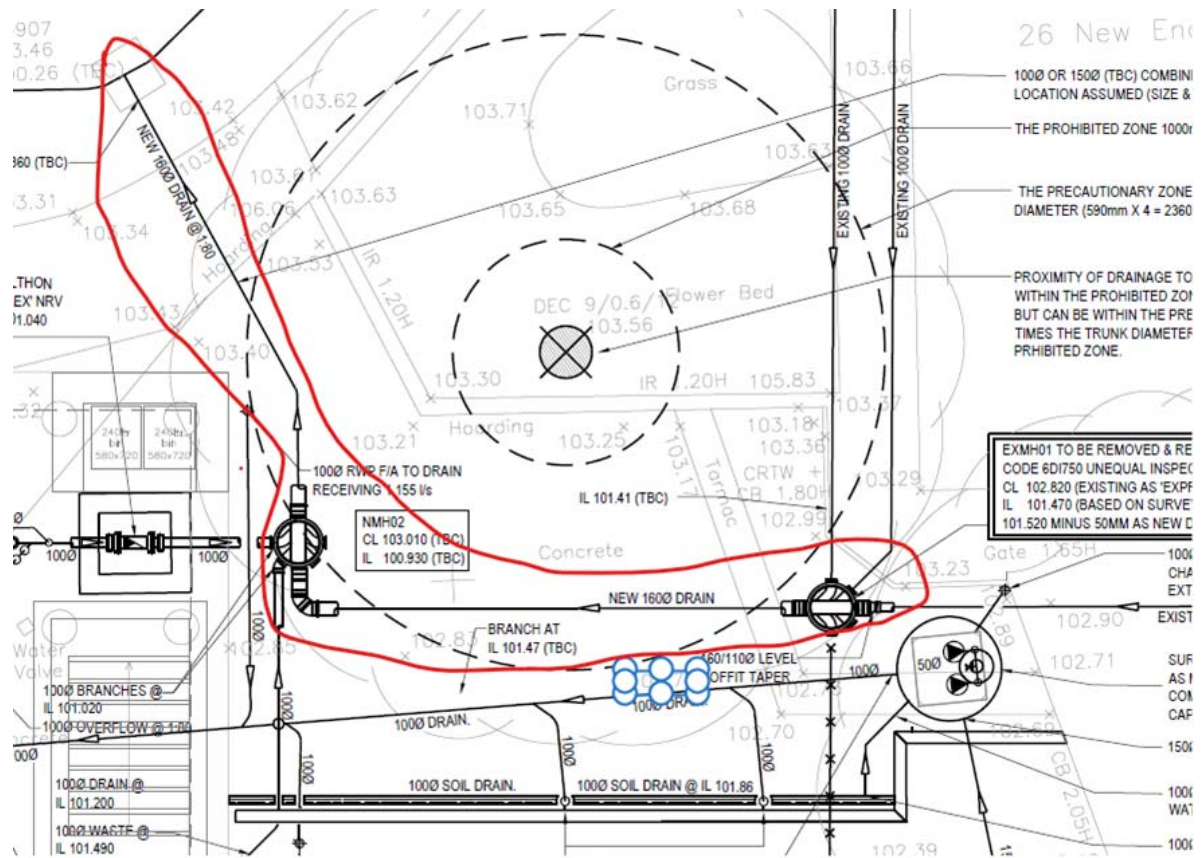
1.1.3. All excavation works will be undertaken by hand or by the use of an airspade within the RPA of tree 1 (Oak). Soil removal must be undertaken with care to prevent disturbance of the roots beyond the immediate area of the excavation. The trench should be kept as narrow as possible to reduce the potential amount of root severance.

1.1.4. All roots (including fibrous roots) will be retained in situ without damage. Where a mass of flexible roots is encountered, it may be possible either to displace the roots to another location temporarily or permanently to avoid areas of excavation. If roots above 25mm in diameter within the RPA are uncovered then the ground around the root will be carefully removed, avoid de-barking, breaking, splitting, splintering, or shattering the roots. The roots will be wrapped in damp hessian to minimise damage and prevent the roots drying out.

1.1.5. Semi flexible PVC drainage pipe will be used. This will be carefully installed by threading below the retained roots.

1.1.6. Backfilling of excavations should be carried out using the excavated soil, which should be worked in around roots and lightly "tamped" not compacted and preserving the original soil profile.

1.1.7. In the event that the appointed contractor is uncertain of the correct course of action when undertaking construction/installation processes that may affect a tree or trees protected on site, or a situation that is unexpected arises that affects the tree or trees, the appointed arboricultural consultant should be contacted and the process discussed to find an approach with agreement from the local authority.



Fiona Critchley B. Sc. (Sp. Hons), Ad Dip. F. Arbor. A, Tech Cert. (AA), R.F.S Cert Arb.
 LANTRA Professional Tree Inspector