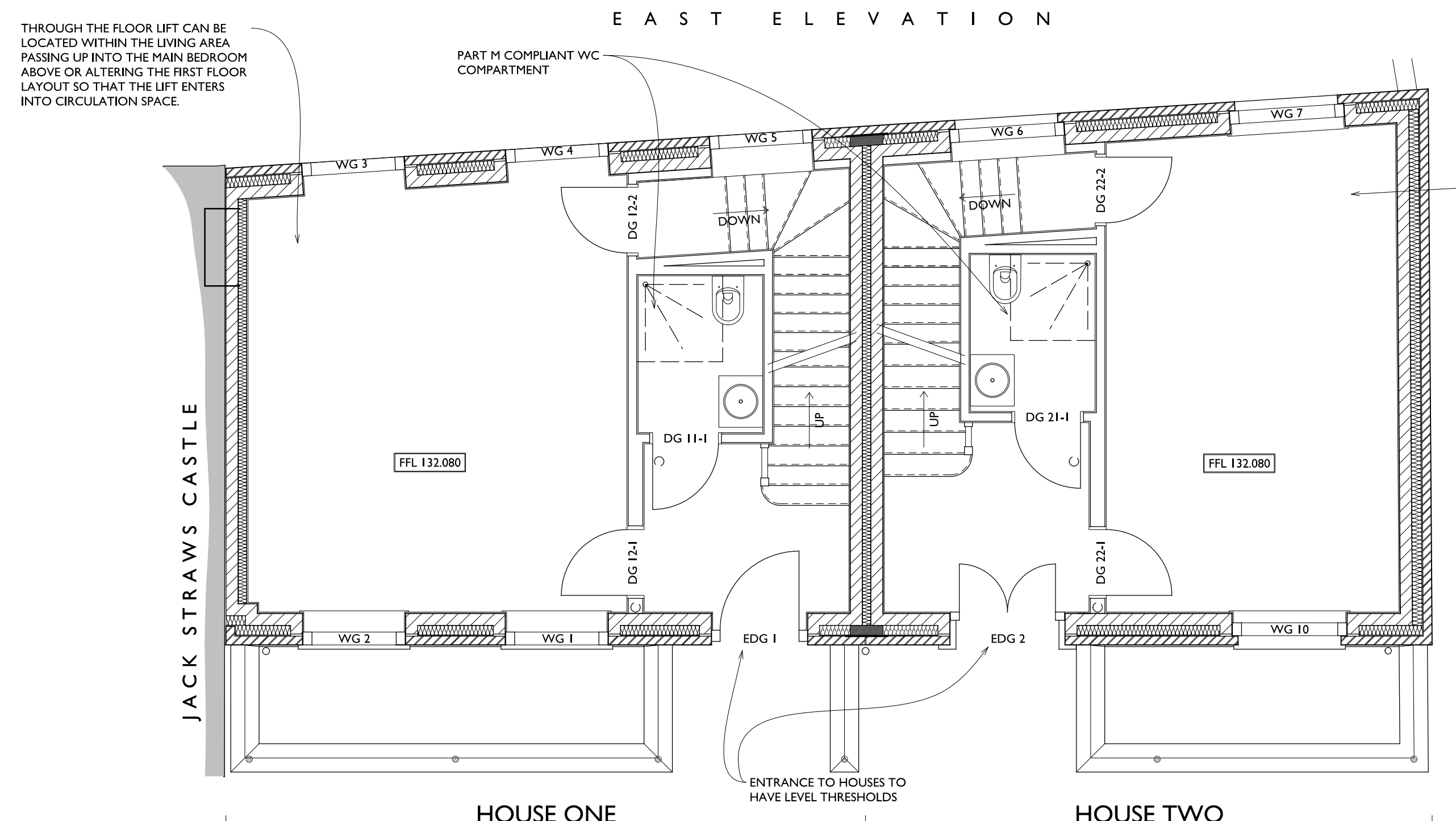
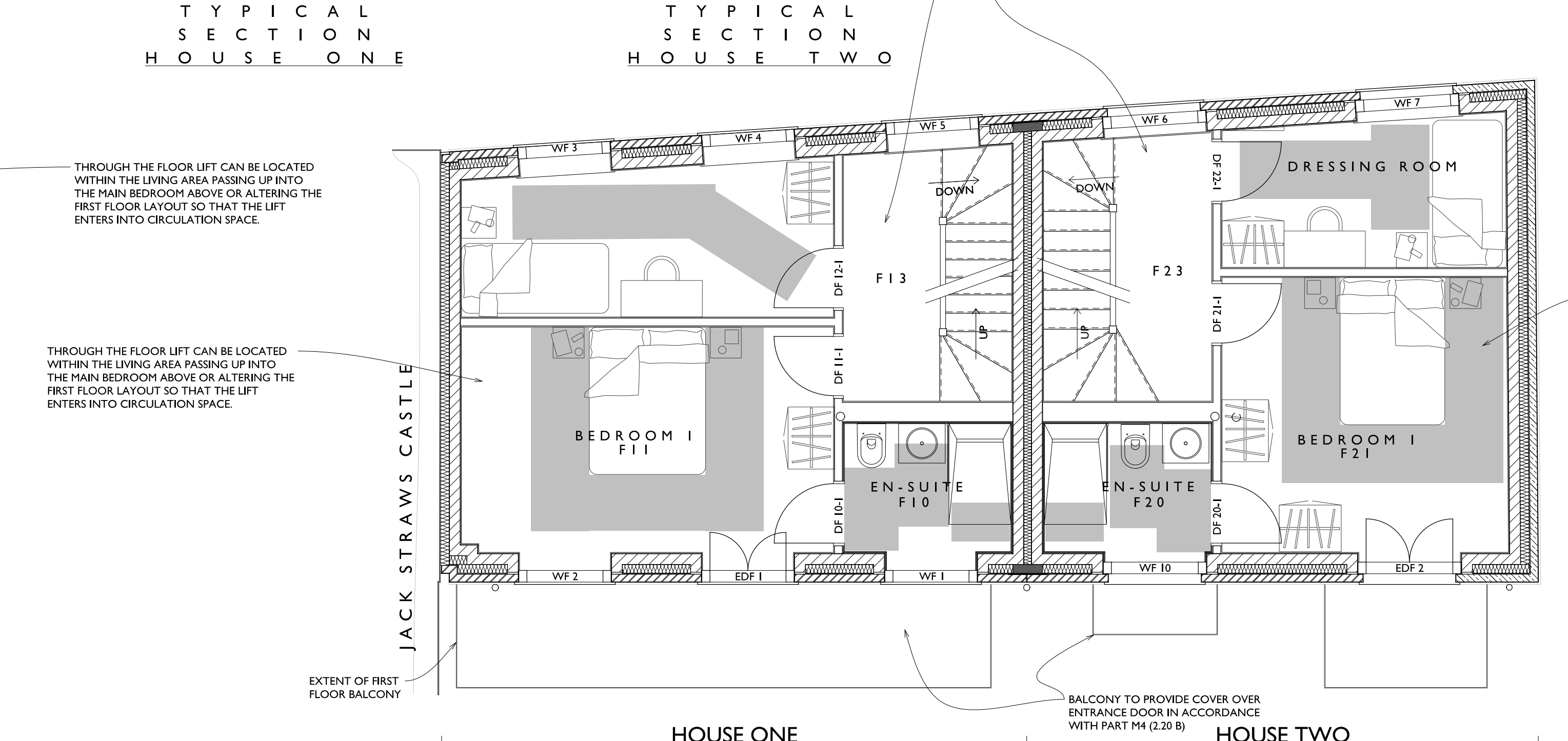


NORTH ELEVATION
(NO DOWNPIPES TO THIS ELEVATION)

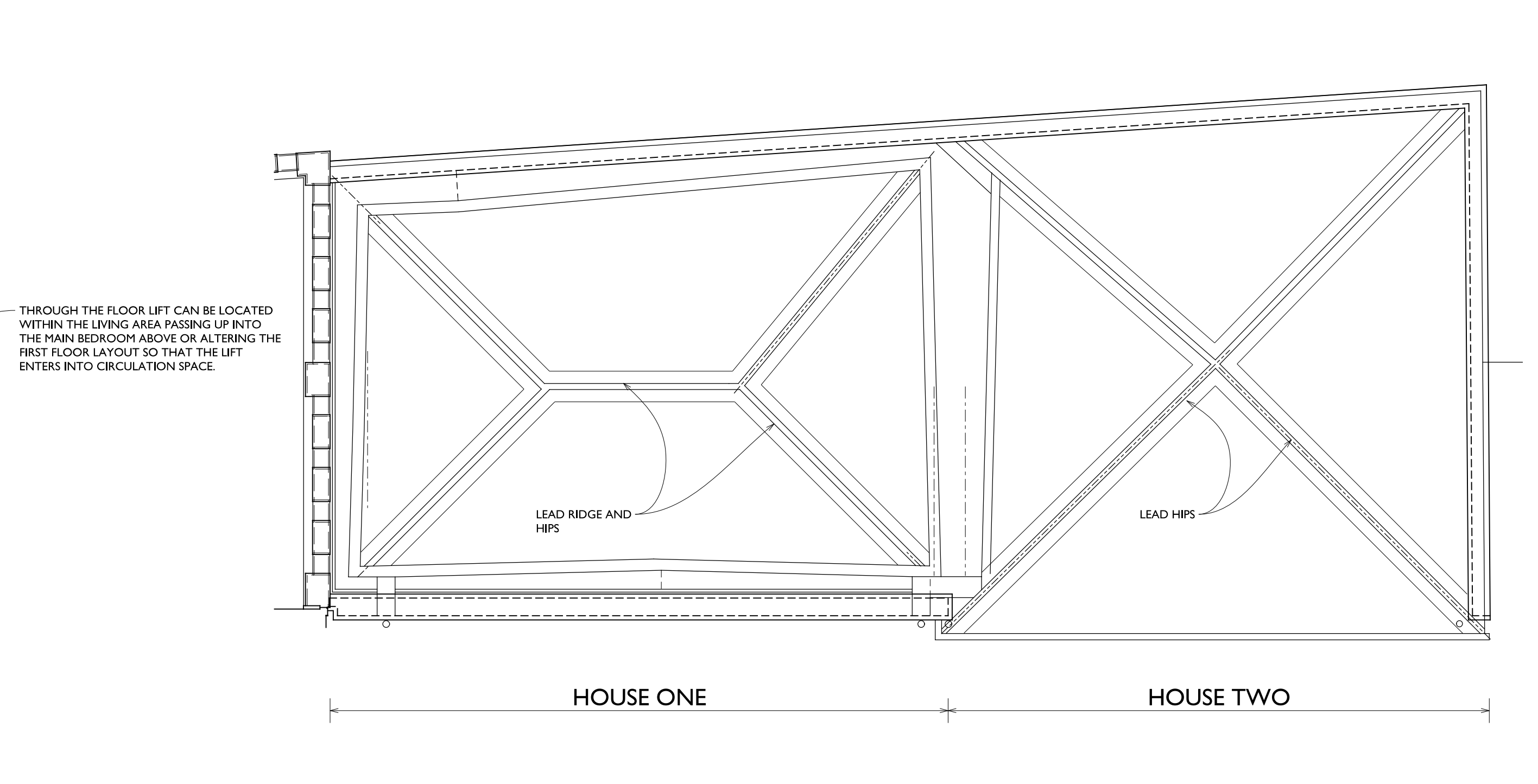
WEST ELEVATION
(NO DOWNPIPES TO THIS ELEVATION)



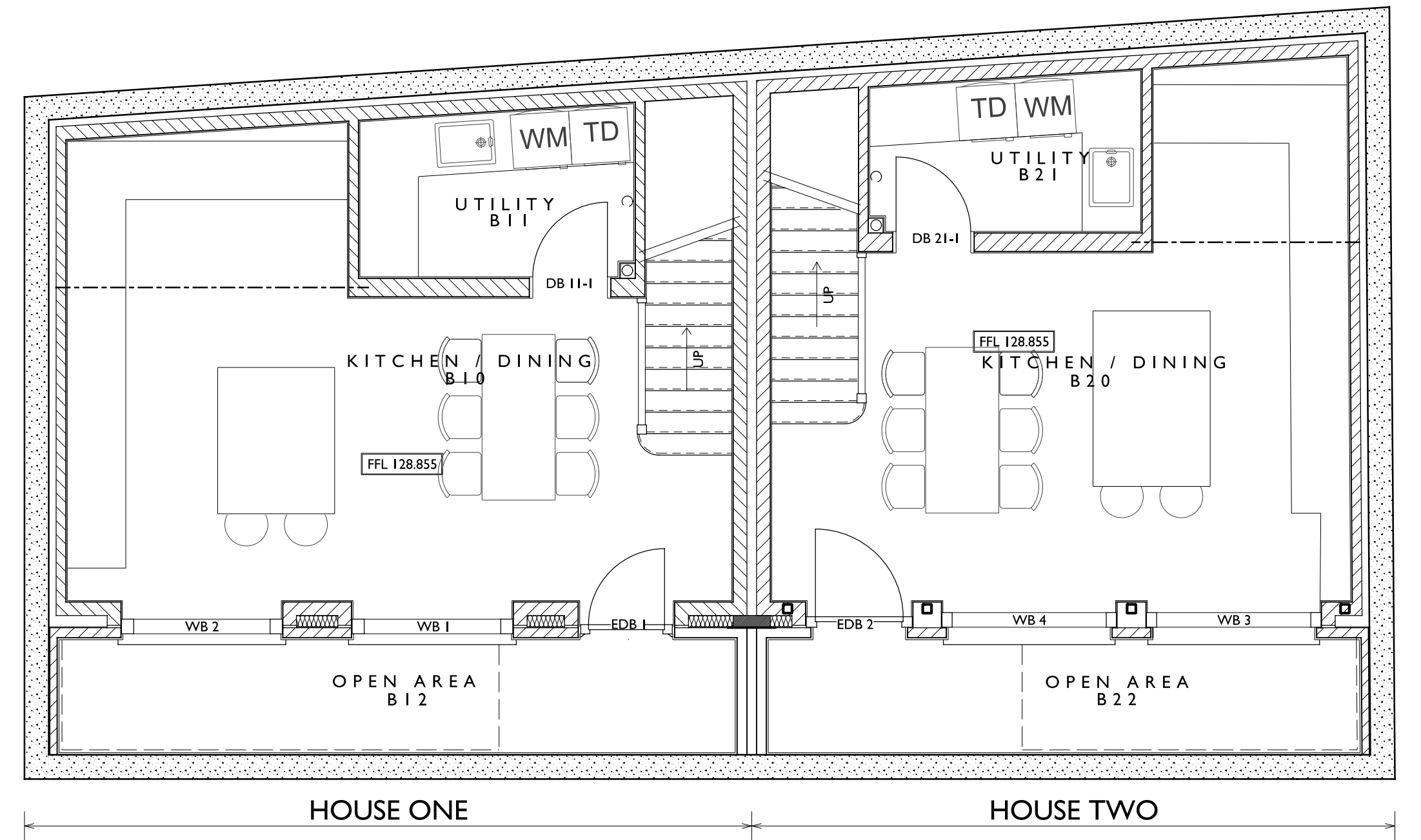
GROUND FLOOR PLAN



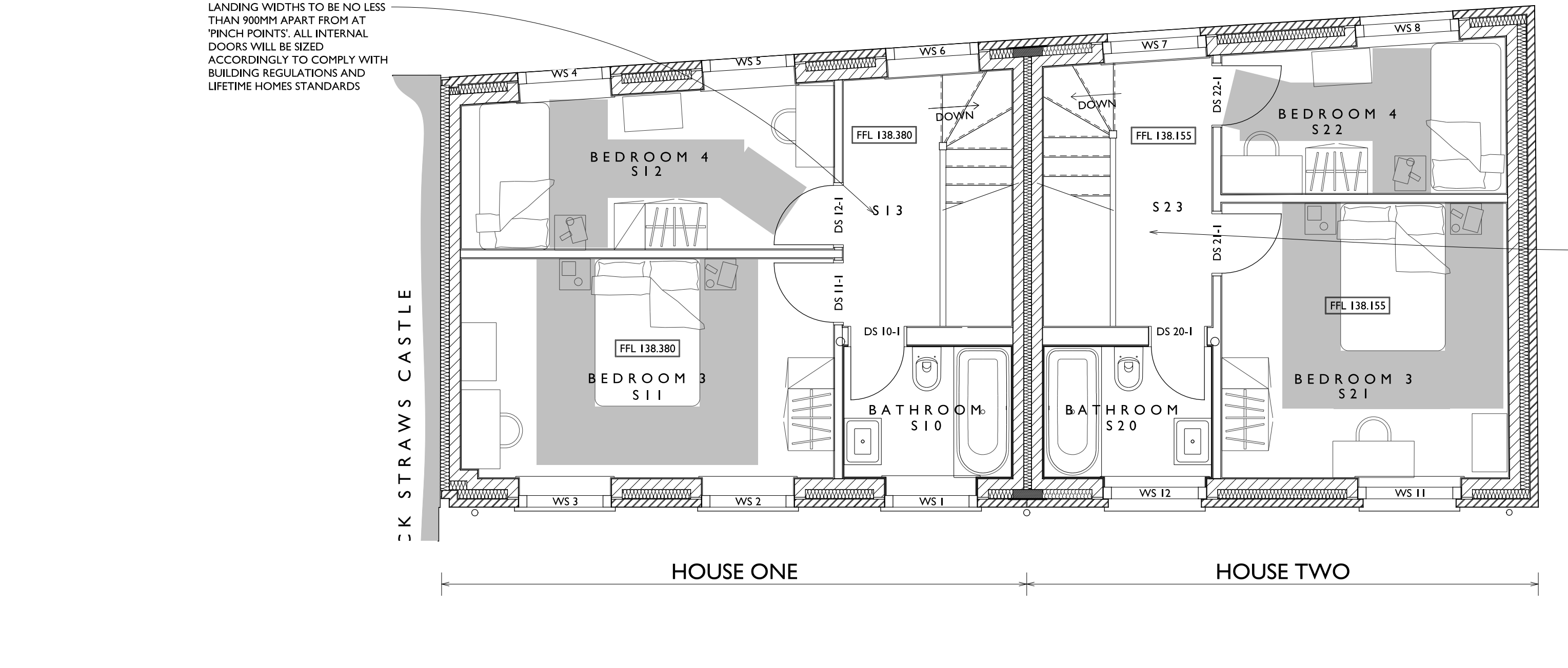
FIRST FLOOR PLAN



ROOF PLAN



BASEMENT



SECOND FLOOR PLAN



MATERIALS
LONDON STOCK BRICK IN LINE REDTAR AND FLESH BOND, RUBBED AND GAUGED BRICK ARCHES, TIMBER SASH WINDOWS SET WITH BRICK REVEALS, THIN GLAZING BARS AND STONE CILLS ALL TO QUINLAN TERRY ARCHITECTS DETAILS, NATURAL SLATE TO ROOF, METAL RAILINGS TO BASEMENT AREAS

REVISIONS:
REV B - BALCONIES ADDED AND REAR GROUND FLOOR WINDOWS REVISED - 07-03-2017
REV C - DRAWING UPDATED - 20-03-2017
REV D - DRAWING UPDATED WITH BASEMENT ELEVATION - 30-03-2017
REV E - DRAWING UPDATED SHOWING CYCLE LOCKERS TO GROUND FLOOR - 13-04-2017
REV F - DRAWING UPDATED FOLLOWING PLANNING COMMENTS - 18-05-2017
REV G - DRAWING UPDATED AND ROOF PLAN ADDED - 19-05-2017
REV H - CYCLE STORAGE REMOVED FROM WITHIN DWELLINGS - 14-09-2017
REV I - BASEMENT LAYOUT ADJUSTED - 25-09-2018
REV K - BASEMENT LIGHTWELL ADJUSTED - 25-09-2018
REV L - BASEMENT LAYOUT ADJUSTED - 27-09-2018
REV M - DRAWING UPDATED - 10-03-2020
REV N - DRAWING UPDATED FOR PLANNING - 10-03-2020
REV O - BAT AND BIRD BOXES ADDED - 14-04-2020
REV P - DRAWING UPDATED TO SUIT PARTY WALL COMMENTS - 17-02-2022
REV Q - BLIND WINDOWS REMOVED - 18-03-2022
REV R - UPDATED TO CLIENTS COMMENTS AND RESUBMITTED TO COUNCIL FOR APPROVAL - 09-05-2022
REV S - DRAWING UPDATED FOLLOWING PLANNING COMMENTS - 14-08-2022
REV T - DRAWING UPDATED FOLLOWING COMMENTS FROM CONSERVATION OFFICER - 08-08-2022

QUINLAN TERRY ARCHITECTS LLP
OLD EXCHANGE,
HIGH STREET, DEBHAM,
ESSEX, CO7 6HA
9TH JANUARY 2017
DRAWING NO.: 1370/3 'T'
SCALE: 1:50 SCALE @ A0

