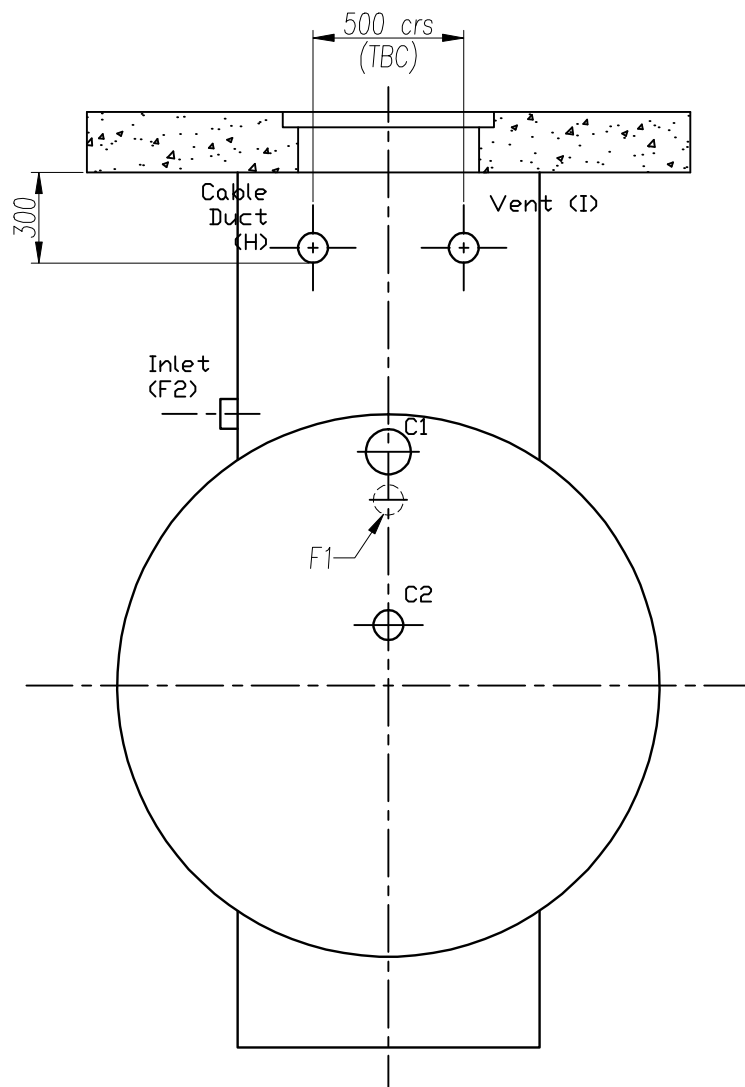


Tank manufactured to tolerance of $\pm 10\text{mm}$ on all dimensions.

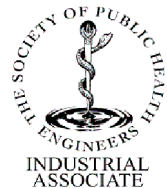


NOTES:

1. Effective sump capacity to equal one minute of pump output minimum.
2. Float switches to be positioned away from obstructions and in area of least disturbance.
3. Cable ducts to be 100 nb min, complete with draw rope, direct route to panel location avoiding sharp bends.
4. All civil engineering by main contractor.
5. Reinforcing bars in concrete to be kept at least 75mm away from access opening in the vicinity of the top guide-rail bracket fixing holes.

NEW HADEN PUMPS
PUMPING SOLUTIONS

www.nhpumps.com
Cheadle, Staffs., ST10 2NW.
Telephone: 01538 757900 Fax: 01538 757999



Typical arrangement of Horizontal GRP Tank
Pump Type:
For:

Client		Original Size A2	19.01.2009	RH
Scale	1:25	Date		Drawn
Drg.No.	MDXXXXXX-XX	Sheet	1 of 1	©

Drawing to be altered only by NHP

ALL DIMENSIONS IN mm
DO NOT SCALE - IF IN DOUBT ASK

This is the property of New Haden Pumps Ltd. and must not be passed on to any person not authorised by New Haden Pumps Ltd. or be copied or otherwise utilized by anybody without New Haden Pumps Ltd. expressed written permission.