

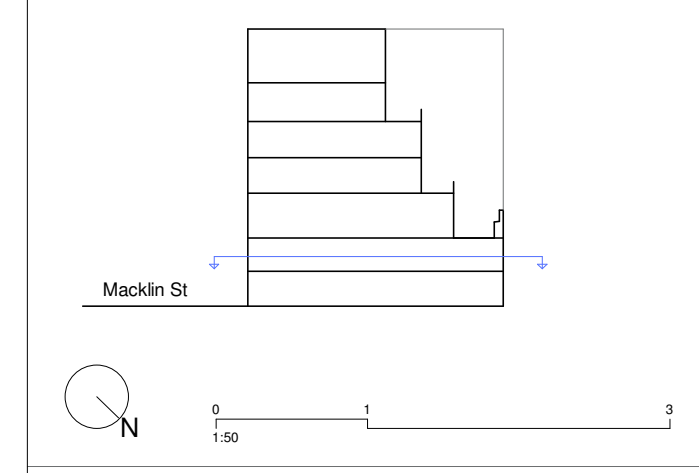
**Disclaimer**  
Do not scale from this drawing. Check all dimensions on site before fabrication or setting out. This document is copyright and may not be reproduced without permission of the owner.

- Notes**
- Commercial Office
  - Residential 1B2P
  - Residential 2B3P
  - Residential 3B6P
  - Plant BOH
  - Bike
  - Residential Terrace
  - Lobby FOH
  - Circulation Core

Rev	Reason for Issue	Date	Drw	Chk
05	Planning Update	12/09/22	Apt	Apt
04	Issued for Planning	27/05/22	Apt	Apt
03	Issued for Planning	29/04/22	Apt	Apt
02	Issued for Information	14/04/22	Apt	Apt
01	Issued for Information	01/04/22	Apt	Apt

**Consultants**

Structures	Heyne Tillett Steel
MEP, Fire	Horea Lea
Acoustic	Horea Lea
Air Quality	Horea Lea
Energy & Sustainability	Horea Lea
Transport & C&M	TTP
Cost Manager	Gardiner & Theobald
Right of Light	Right of Light Consulting
Building Control	Bureau Veritas Building Control
Principle Designer	Owl Safety Consultancy Ltd
Planning Consultant	JLL
Heritage	HCUK Group



# Apt

235 St John Street London EC1V 4NG [www.apt.london](http://www.apt.london)

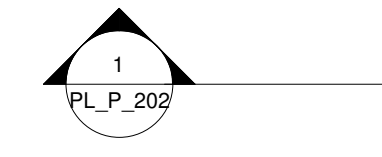
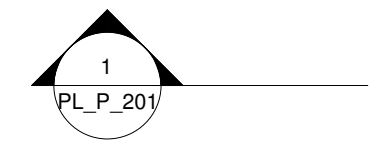
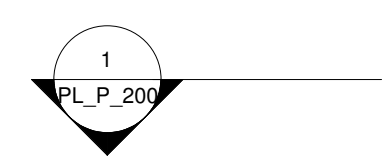
**Client**  
**Elleric Ltd.**

**Project**  
**Lupin House**

**Drawing Title**  
**Mezzanine Level**  
General Arrangement - Proposed

**Scale**  
**1 : 50 @ A1**  
**Planning**

Project No.	Drawing No.	Revision
21035	A_PL_P_101	05



**1 Proposed Plan - Mezz Level**  
1 : 50