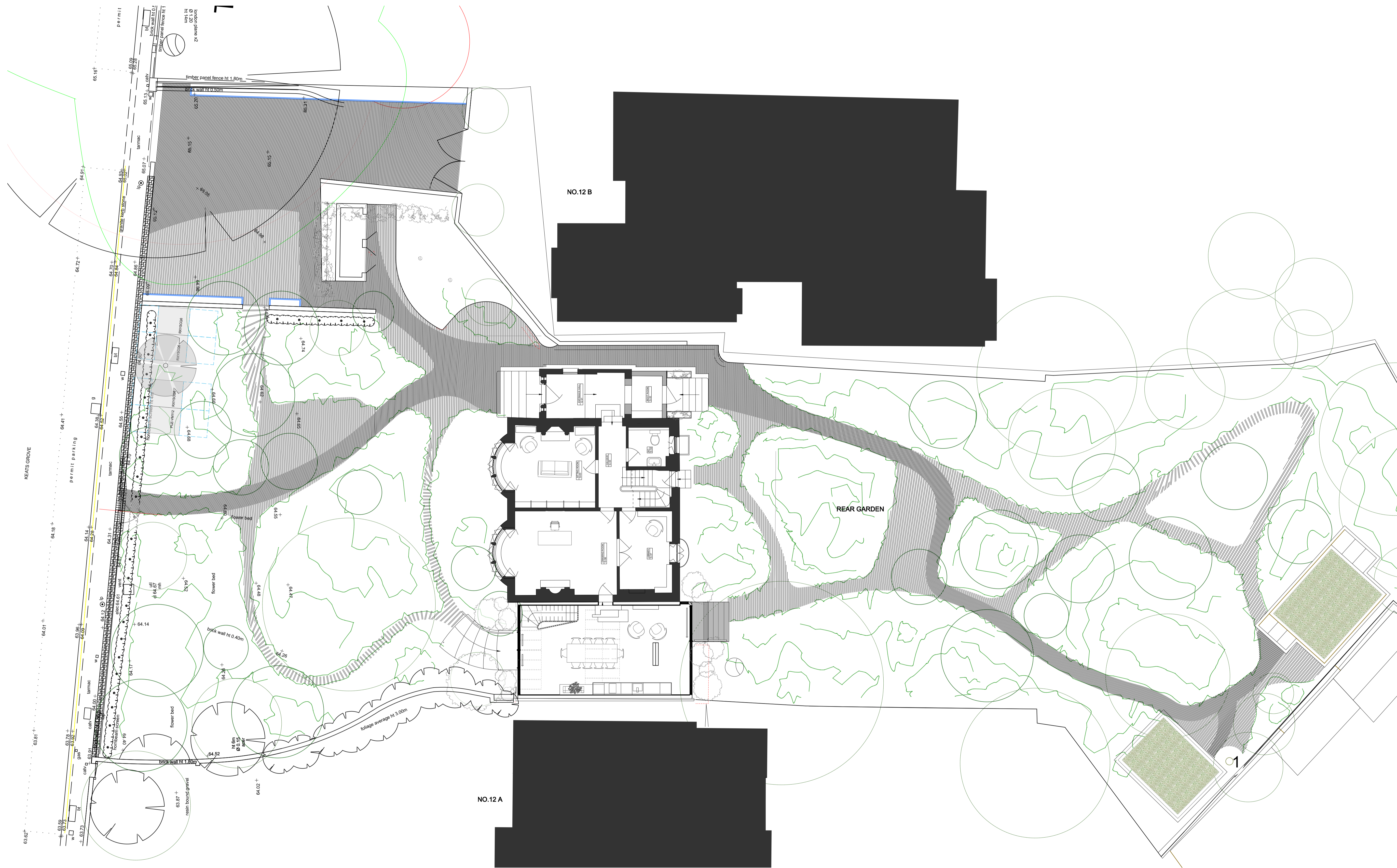


Note:

Approved Ffio hard landscaping condition 4h Camden Ref: 2021/3032/L implementation due shortly

Proposed garden rooms with same footprint as approved as per enclosed drawings 0341_A_1600 and 1601 (2019_5433_P and linked application 2019_5469_L) - location adapted to allow for the retention of existing fig tree.

1 Fig tree to be retained



51

12 Keats Grove
London NW3 2RN

Kylie Richardson
Project No. 1168 12KG

51% Studios
1A Colham Mews, Agar Grove, London NW1 9SB
+ 44 (0) 203 355 1205

Planning

Proposed Site Plan

Scale 1:100 @ A1
Drawn by PT/06/07/2022

Issue Notes:

1 Proposed Site Plan
Scale: 1:100

