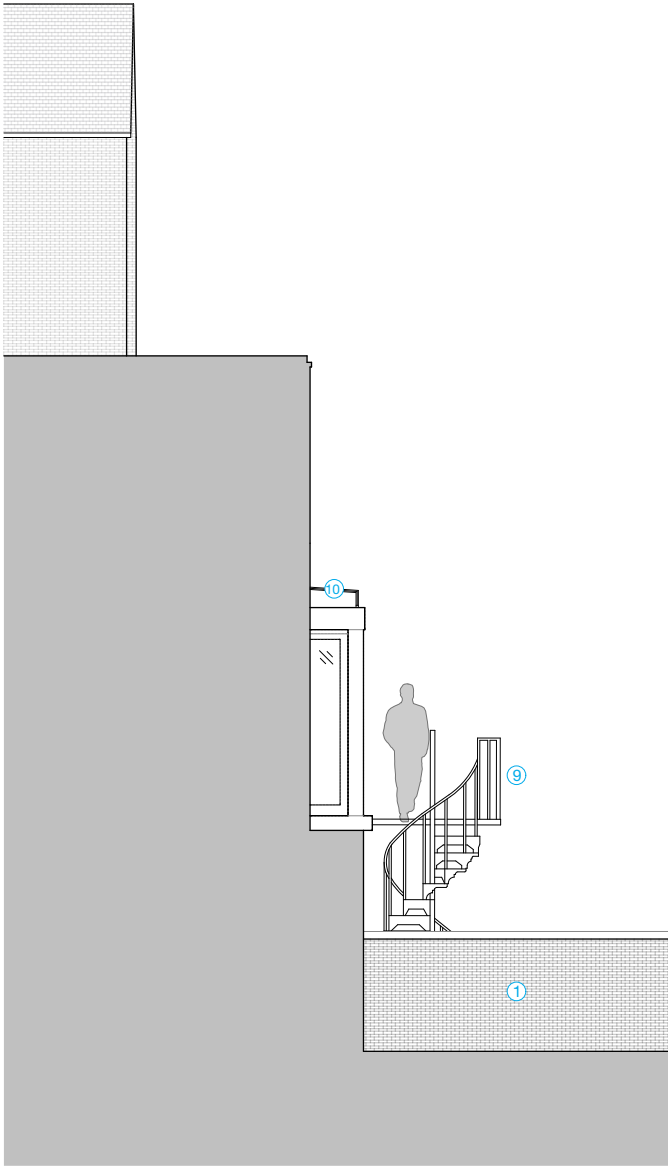
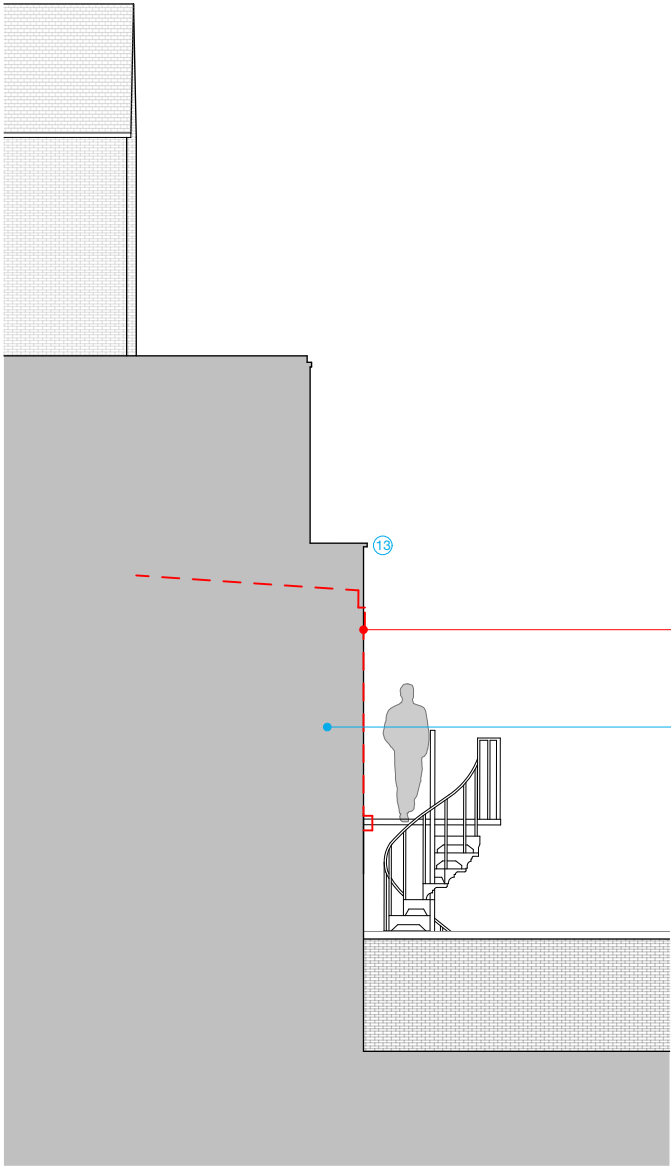


REVISION			
NUMBER	DATE	BY	NOTES
P1	27/01/2022	ET	Issued for Planning



1 Existing East Elevation
1:100



2 Proposed East Elevation
1:100

- MATERIAL KEY
- ①

LONDON STOCK BRICKWORK

②

SLATE TILES

③

TIMBER PAINTED SASH WINDOWS

④

METAL RAILINGS

⑤

TERRACOTTA CHIMNEY POT

⑥

METAL DRAINAGE SYSTEM

⑦

SAND-CEMENT RENDER

⑧

POWDER COATED ALUMINIUM DOORS

⑨

METAL STAIRCASE

⑩

GLAZED ROOF

⑪

ALUMINIUM HINGED WINDOWS

⑫

ALUMINIUM SASH WINDOWS

⑬

STONE COPING STONE SINGLE WEATHERED

⑭

EXISTING TIMBER FENCING

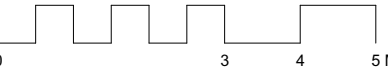
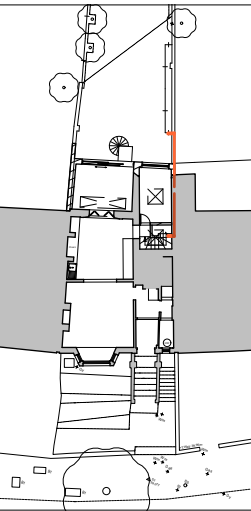
KEY

Existing

Proposed

Existing extension to be demolished

KEY PLAN:



MCMa

MILTIADOU
COOK
MITZMAN architects llp

020 7722 8525

Unit 1 Primrose Mews

office@mcma.design

Sharpleshall Street

www.mcma.design

London NW1 8YW

CLIENT

Yin Jones

PROJECT
14A King Henry's Road, NW3 3RP

SHEET TITLE
Elevation 4

SCALE
1:100

DATE CREATED **FILE REFERENCE**

DRAWING NUMBER	REVISION
363-DWG-124	P1