

© This drawing is the property of Miltiadou Cook Mitzman architects. No disclosure or copy of it may be made without the written permission of Miltiadou Cook Mitzman architects.

For construction purposes:

- Do not scale this drawing.
- All dimensions and levels to be checked on site.
- Discrepancies to be reported to Miltiadou Cook Mitzman architects before proceeding.
- If in any doubt about information on this drawing contact Miltiadou Cook Mitzman architects.

REVISION			
NUMBER	DATE	BY	NOTES
P1	27/01/2022	ET	Issued for Planning

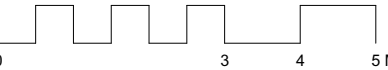
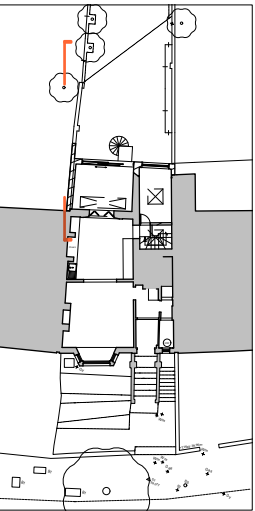
KEY

Existing

Proposed

Existing extension to be demolished

KEY PLAN:



MCMa

MILTIADOU
COOK
MITZMAN architects llp

020 7722 8525
office@mcma.design
www.mcma.design

Unit 1 Primrose Mews
Sharpleshall Street
London NW1 8YW

CLIENT
Yin Jones

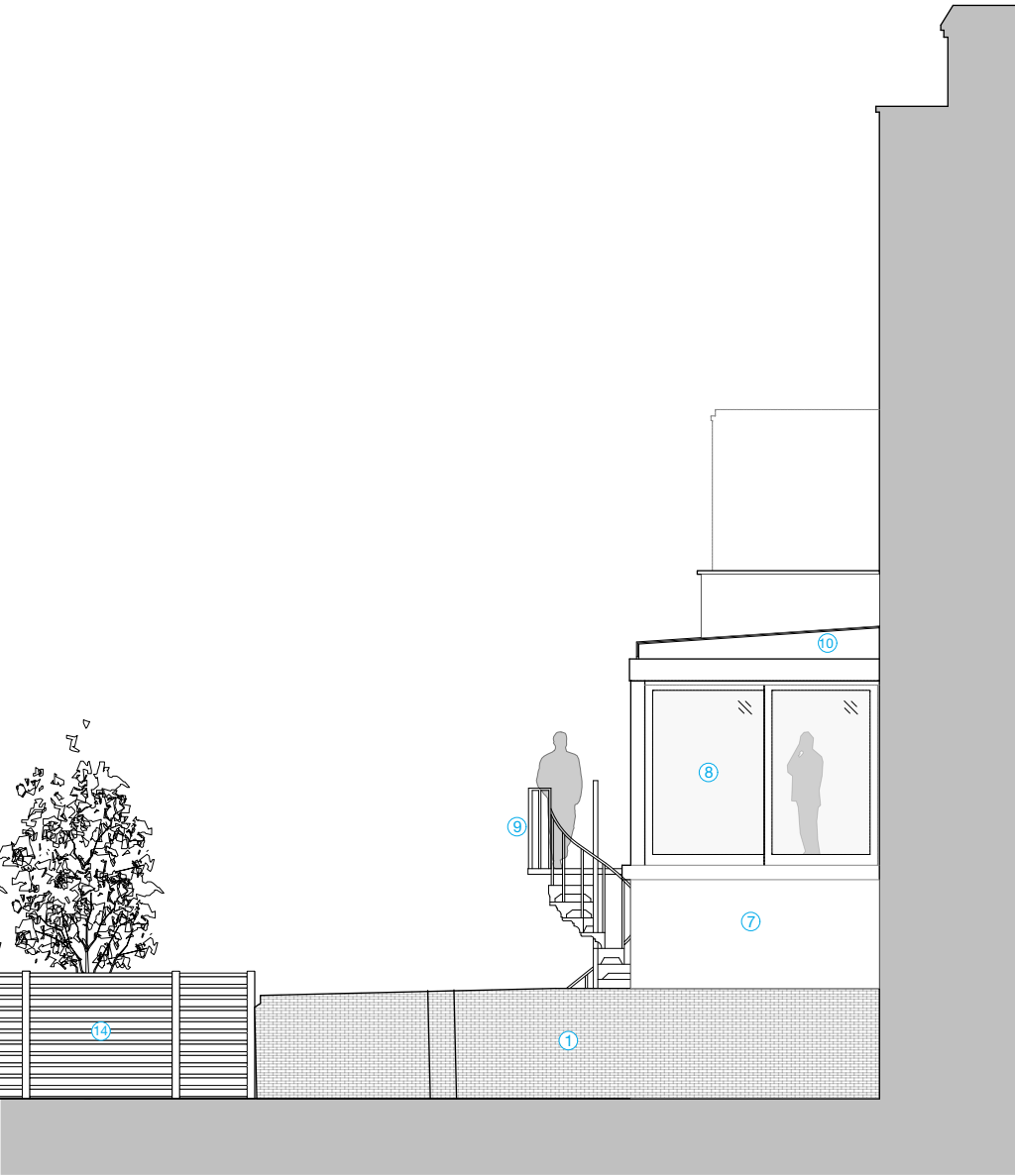
PROJECT
14A King Henry's Road, NW3 3RP

SHEET TITLE
Elevation 3

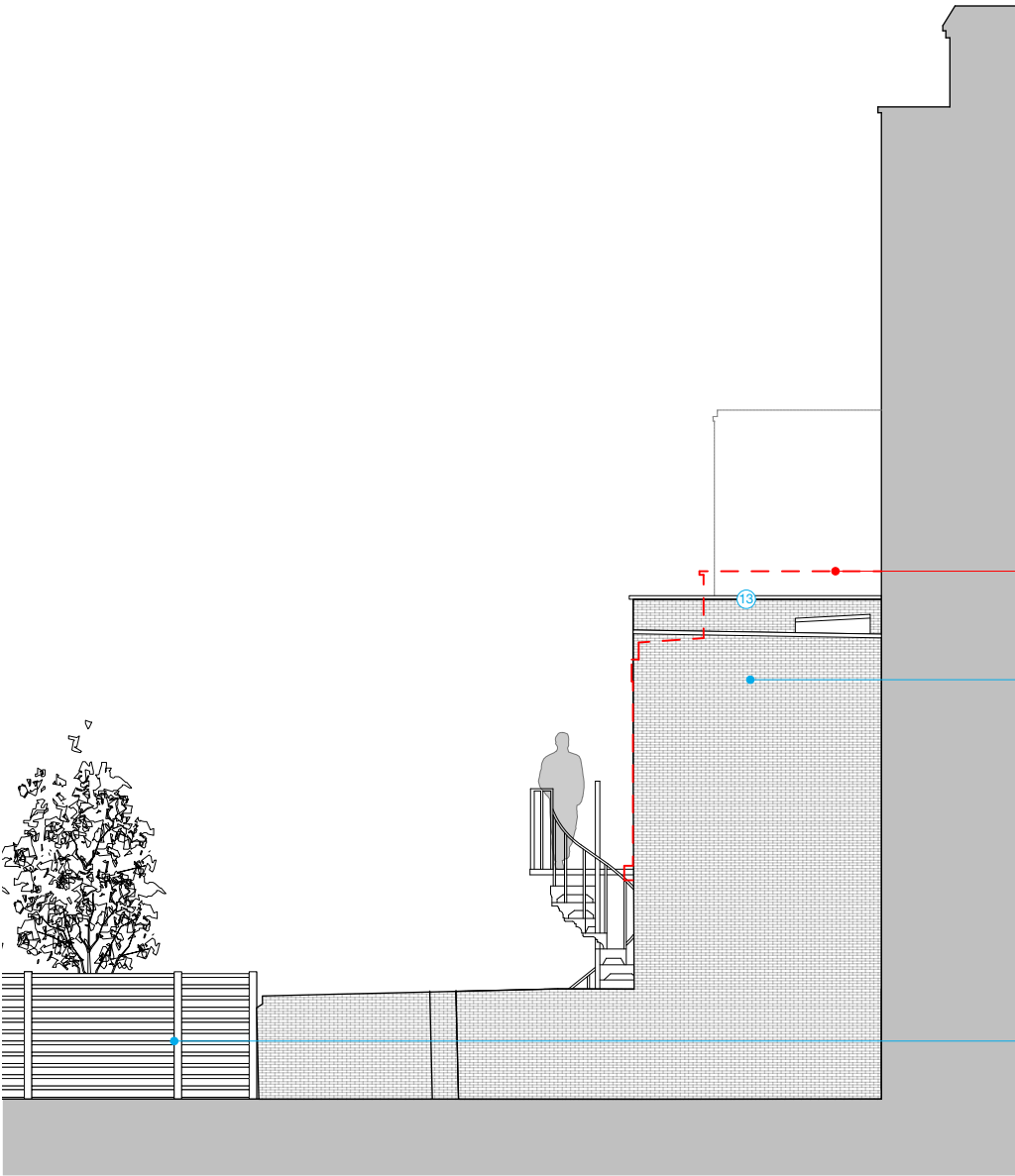
SCALE
1:100

DATE CREATED **FILE REFERENCE**

DRAWING NUMBER	REVISION
363-DWG-123	P1



1 Existing West Elevation
1:100



2 Proposed West Elevation
1:100

- MATERIAL KEY**
- 1

LONDON STOCK BRICKWORK
- 2

SLATE TILES
- 3

TIMBER PAINTED SASH WINDOWS
- 4

METAL RAILINGS
- 5

TERRACOTTA CHIMNEY POT
- 6

PLASTIC DRAINAGE SYSTEM
- 7

SAND-CEMENT RENDER
- 8

POWDER COATED ALUMINIUM DOORS
- 9

METAL STAIRCASE
- 10

GLAZED ROOF

11

ALUMINIUM HINGED WINDOWS

12

ALUMINIUM SASH WINDOWS

13

STONE COPING STONE SINGLE WEATHERED

14

EXISTING TIMBER FENCING