

© This drawing is the property of Miltiadou Cook Mitzman architects. No disclosure or copy of it may be made without the written permission of Miltiadou Cook Mitzman architects.

For construction purposes:

- Do not scale this drawing.
- All dimensions and levels to be checked on site.
- Discrepancies to be reported to Miltiadou Cook Mitzman architects before proceeding.
- If in any doubt about information on this drawing contact Miltiadou Cook Mitzman architects.

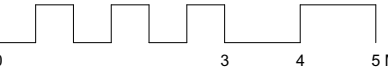
REVISION				
NUMBER	DATE	BY	NOTES	
P1	27/01/2022	ET	Issued for Planning	
P2	08/09/2022	RH	Revised for Planning	

NOTES:

KEY

Existing

Proposed



MCMa

MILTIADOU
COOK
MITZMAN architects llp

020 7722 8525
office@mcma.design
www.mcma.design

Unit 1 Primrose Mews
Sharpleshall Street
London NW1 8YW

CLIENT
Yin Jones

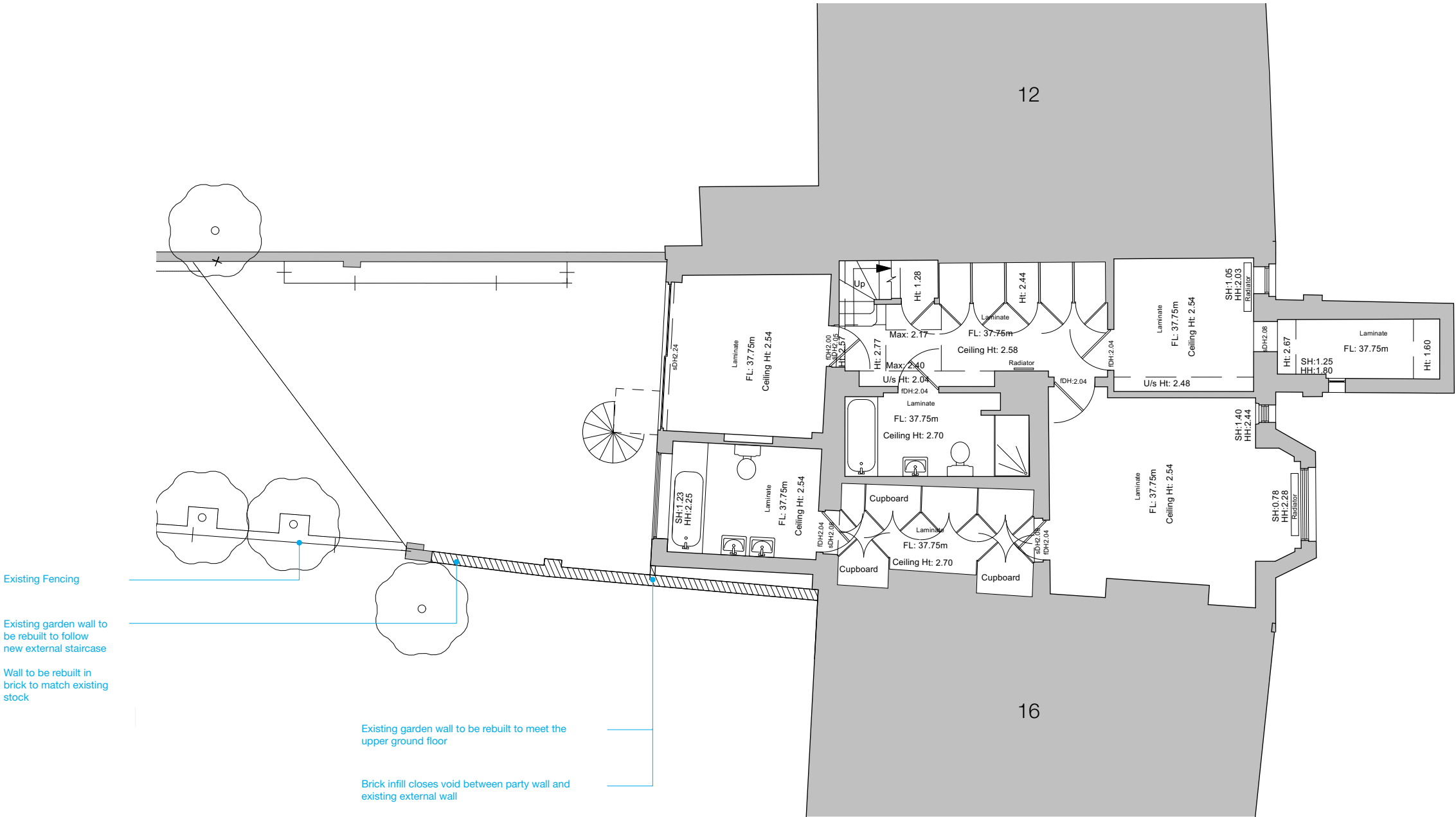
PROJECT
14A King Henry's Road, NW3 3RP

SHEET TITLE
Proposed Lower Ground Floor Plan

SCALE
1:100

DATE CREATEDFILE REFERENCE

DRAWING NUMBER	REVISION
363-DWG-102-XX	P2



1 Proposed Lower Ground Floor Plan
1:100