

## HERITAGE STATEMENT

### 5 Chamberlain Street

Camden NW1 8XB

September 2022

### Introduction

5 Chamberlain St is a grade II listed 5 storey terrace building in the Primrose Hill Conservation Area. The ground and upper floors are one dwelling, and the basement is a separate flat.



### Listing

*TQ2784SE CHAMBERLAIN STREET 798-1/63/195 (South side) Nos.1-8 (Consecutive) and attached railings*

#### *GV II*

*Symmetrical terrace of 8 houses. Mid C19. Yellow stock brick with blue brick bands and stucco dressings. Slated roofs with overhanging bracketed eaves. Nos 1 & 11 have pediments and slightly project. 3 storeys and basements. 2 windows each. Prostyle porticos; panelled doors with overlights. Ground floor tripartite sashes have channelled stucco voussoirs, keystones and triglyph with guttae drops; cast-iron window guards to bracketed cornice sills. Architraved 1st floor sashes with bracketed cornices and pediments, cast-iron window guards and continuous sill band. 2nd floor sashes have bracketed sills, continuous sill band and are flanked at the top by the large enriched eaves brackets. INTERIORS: not inspected. SUBSIDIARY FEATURES: attached cast-iron railings with spearhead finials to areas. The houses in Chamberlain Street form a very complete group.*

### Planning History

2021/0292/P, 2021/2003L

*Erection of a single storey basement level extension and installation of replacement balustrade at first floor level together with associated internal alterations.*

**Granted**

2005/3219/P

*Demolition of existing single storey timber extension and existing dormer window at the rear, with the construction of two dormer windows to rear roof, reconstruction of existing single storey extension at ground floor level, new timber framed doors to rear elevation to existing terraces at ground and first floor level.*

**Granted**

2005/0080/P

*Construction of 2 dormer windows to rear. Demolition and reconstruction of existing single storey rear extension at ground floor level with external staircase. New timber framed doors to first floor rear elevation to replace existing sash window, replacement framed doors to ground and first floor terraces and internal alterations .*

**Refused**

2004/2509/P

*Extension of existing dormer window to rear. Demolition and reconstruction of existing single storey rear extension at ground floor level with external staircase. New timber framed doors to first floor rear elevation to replace existing sash window, replacement framed doors to ground and first floor terraces and internal alterations .*

**Refused**

PEX0200698

*Addition of new stair access to basement level from the front of the property.*

**Granted**

PE9800317R1

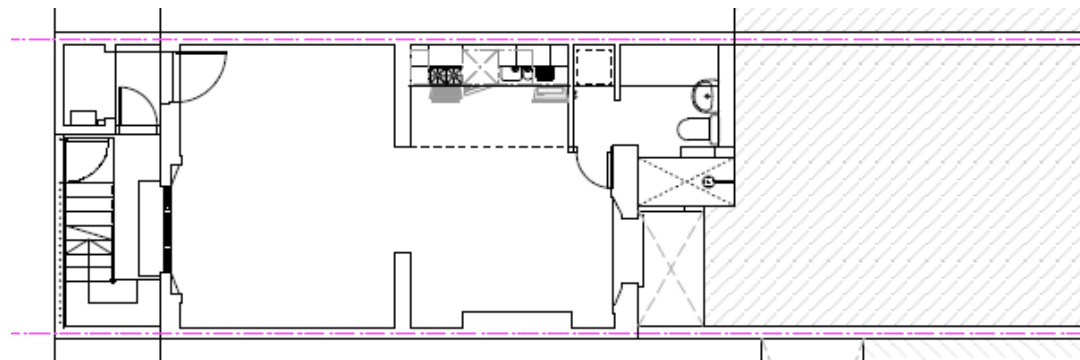
*Proposed enlargement of existing flat roofed rear addition and erection of a roof terrace above with flank wall screen, consequent alterations to window at rear first floor,*

### **Existing building**

The existing building has had considerable works carried out to the interior, and a substantial rear extension at upper and lower ground levels from the Planning Consents of 2005.

### Basement

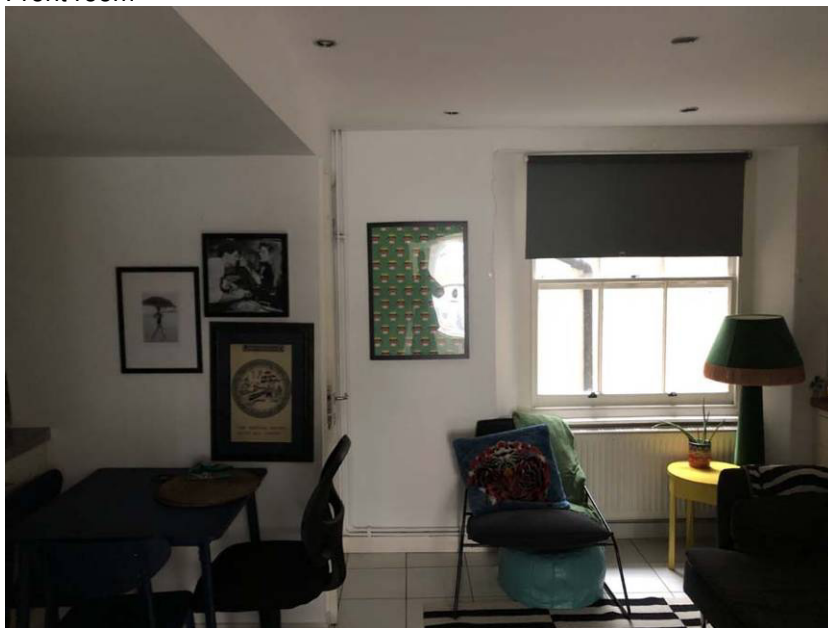
The basement was converted into a self contained flat, closing off the original stair and using the original lower ground front door as the entrance. A small kitchen was added and bathroom in place of the original stair. The original rear area was retained with a new grating to allow access to the garden over. The central spine wall was largely retained. As a lower ground floor there were no cornices or skirtings of note.



Basement Plan



Front room



Rear room towards garden light well



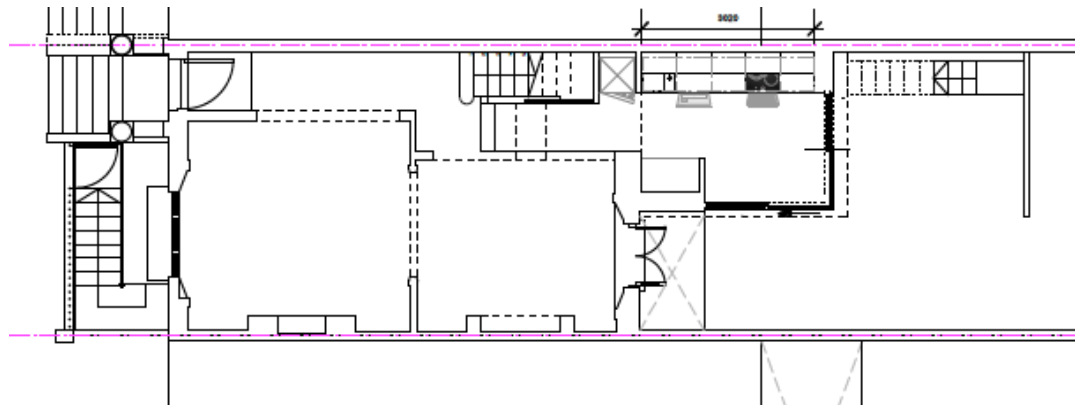
Shower room



Garden light well

### Ground floor

The ground floor hall side wall has been partly removed to allow an open plan layout. The original stair to the basement has been replaced with a kitchen in an extended closet wing. The design is modern with aluminium doors, concrete structure and glass balustrade to roof terrace. The cornicing, ceiling roses, front window with panelling, and skirtings are retained with the plaster stripped of paint to emphasize the detail.



Ground Floor Plan



Front room towards street

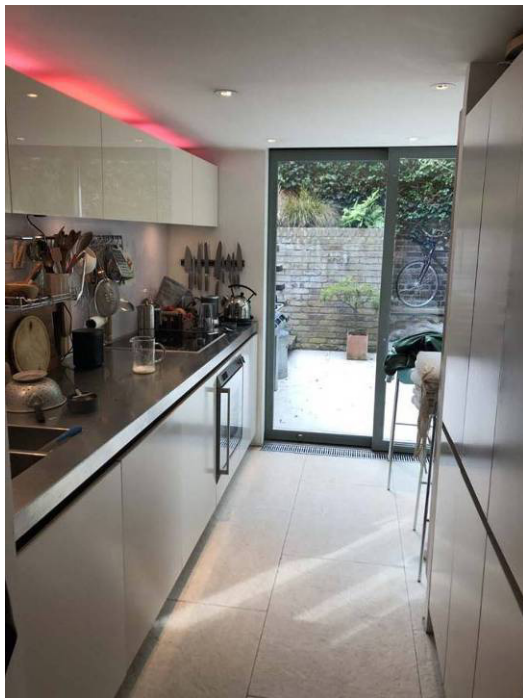


Front room towards hall





Rear room towards garden



Closet wing kitchen



Closet wing from garden



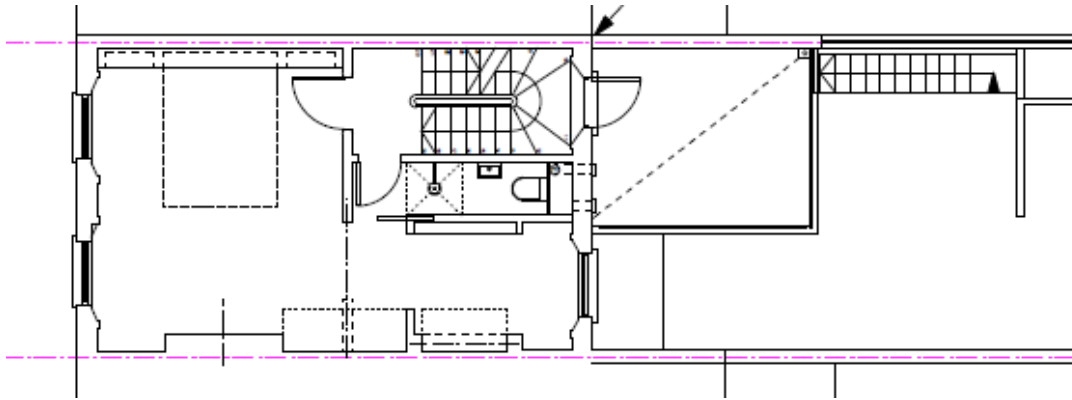
Rear view



Rear view

## First Floor

The plan prior to 2005 had a living room at the front and removed spine wall to a kitchen at the rear. The existing walls and architectural features were retained, but a partition added to form a shower room. Various built in cupboards have also been added to create a bedroom and office.



First Floor Plan



Front bedroom towards street



Front bedroom side wall





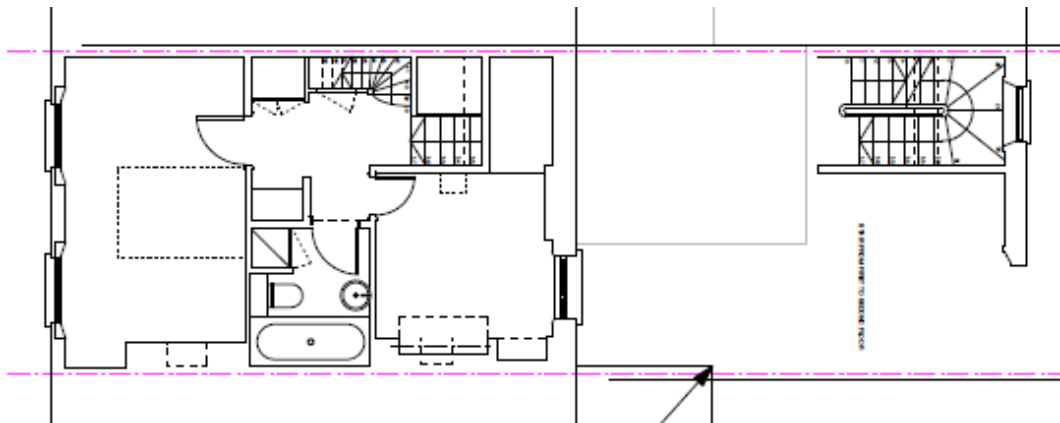
Front bedroom towards study



Study towards Shower room

### Second Floor

The pre-2005 layout was retained with minor changes to the bathroom. No architectural details remain other than the original panelled doors.



Second Floor Plan



Front bedroom



Hall towards front bedroom





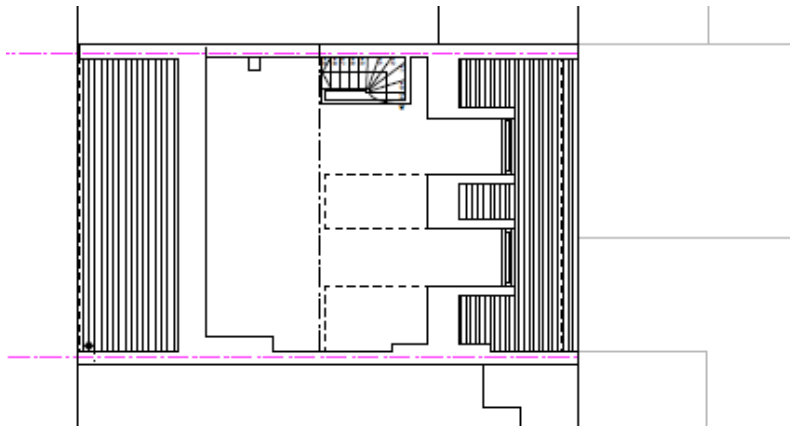
Rear bedroom towards garden



Rear bedroom stair cubby hole

### Third Floor

The pre-2005 open plan bedroom is retained with an original single dormer being replaced by 2 dormers.



Third Floor Plan



Attic bedroom



Rear dormer windows