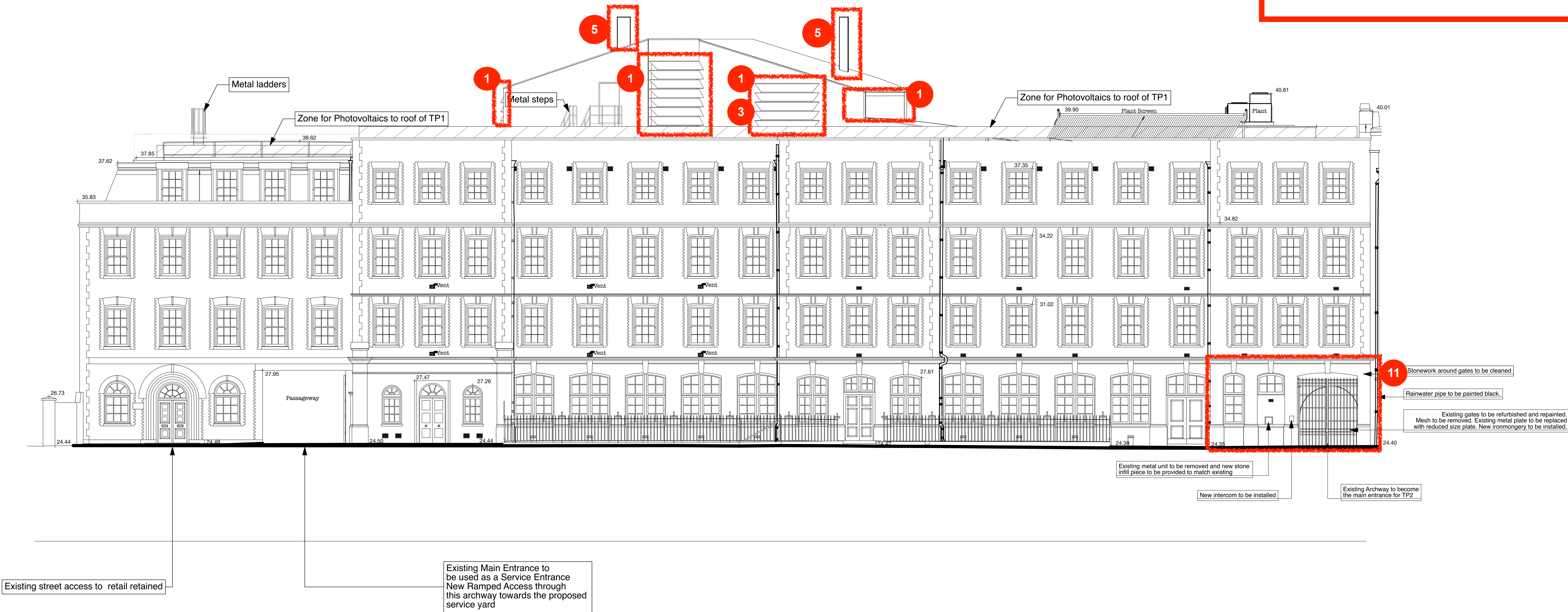


LIST OF CHANGES (LOCATIONS AS LABELLED)

1. Louvre design and arrangement updated, Level 4.
2. Louvred vent added to Gas Meter Room, Level 0.
3. External access doors to plant room omitted, Level 4.
4. External plant equipment added, Level 0.
5. Flues revised, Roof level.
6. Roof openings & access hatch added/ revised, Roof level.
7. East entrance passageway levels revised, Level 0.
8. East entrance passageway and Stair 3 works revised.
9. Relocation of cycle parking and bin store, including canopies, Level 0.
10. Car charging points added and parking bays adjusted to suit, Level 0 courtyard.
11. Works to TP1 facade.



0m 2 4 6 8 10 20m

bmj architects

Boswell Mitchell & Johnston
23 - 24 Easton Street
London
WC1X 0DS

T: 020 7833 9974
E: london@bmjarchitects.co.uk
www.bmjarchitects.co.uk
London/Glasgow

Job No.

2924/AW12

Drawing No.

PL(00)41 Rev F

Drawing Title

South Elevation along Tavistock Place Scale 1:100 @ A1

Issued for

Drawing issue for Section 96a Planning Submission

London School Of Hygiene & Tropical Medicine

TP2

Date

07/07/2022

LONDON SCHOOL OF
HYGIENE & TROPICAL
MEDICINE

© Boswell Mitchell & Johnston Ltd.