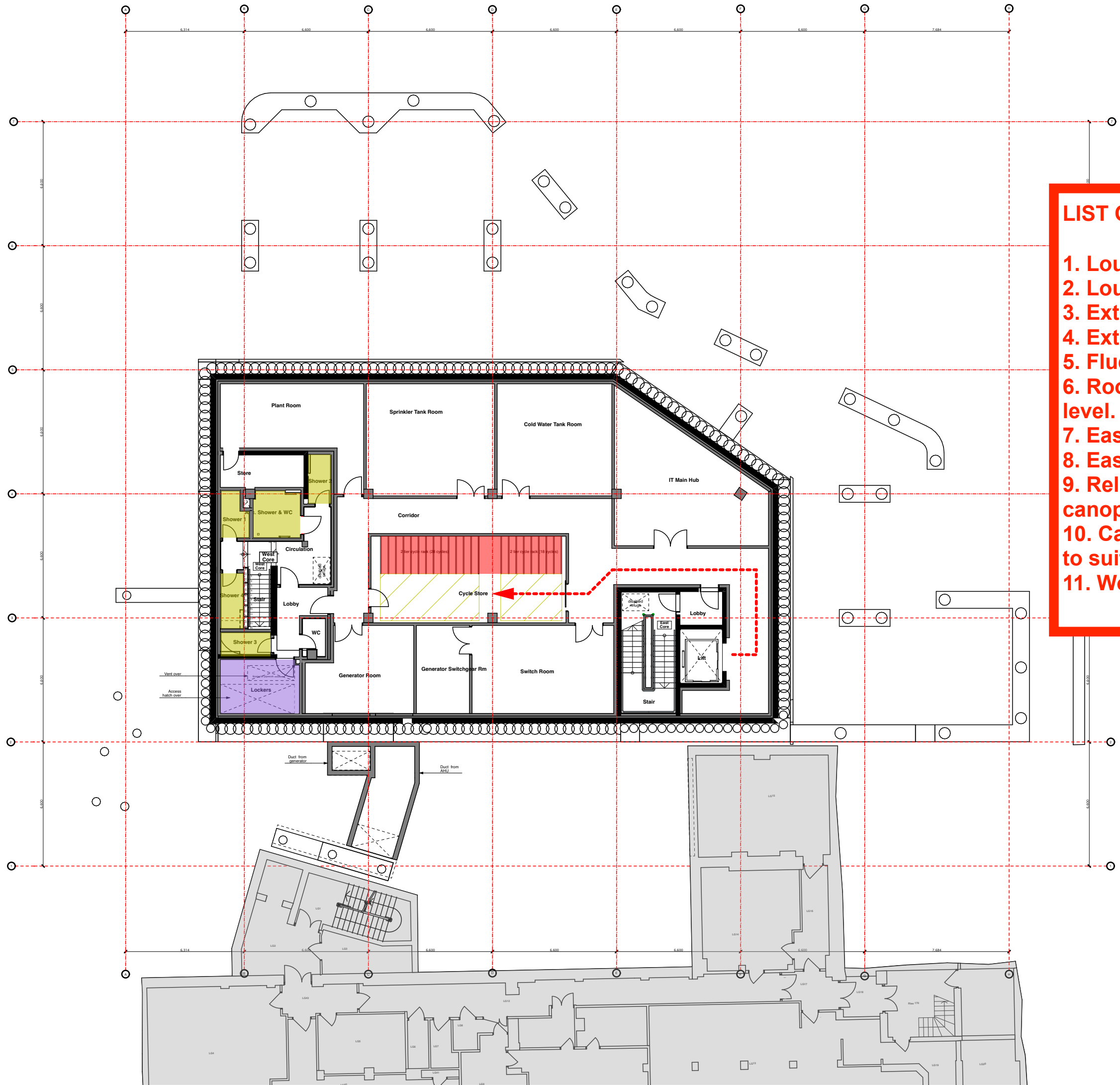
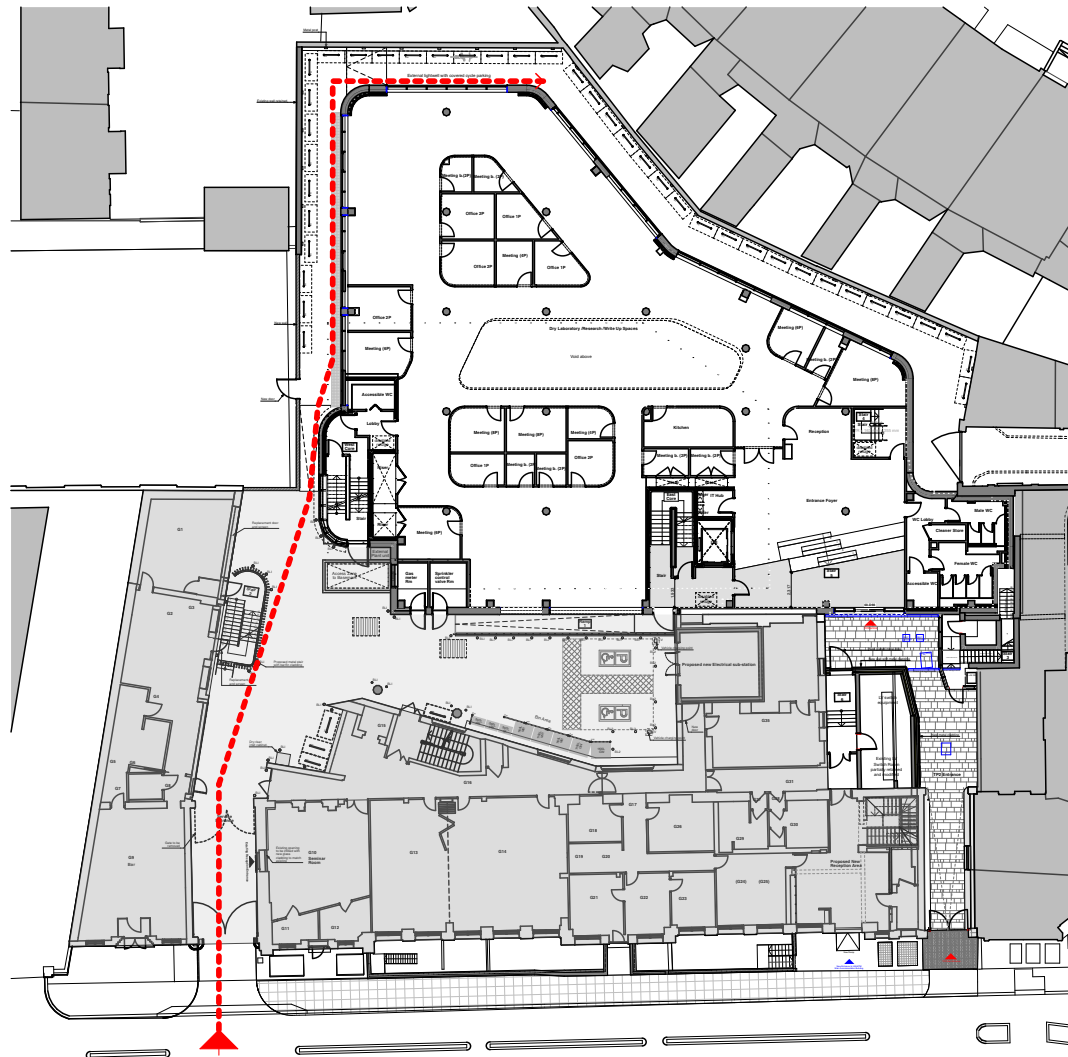


Ground floor level plan



Basement level plan



Proposed Cycle Entrance through the existing pend and route around the Proposed TP2 Ground Floor Level 1:500

- LIST OF CHANGES (LOCATIONS AS LABELLED)
1. Louvre design and arrangement updated, Level 4.

2. Louvred vent added to Gas Meter Room, Level 0.

3. External access doors to plant room omitted, Level 4.

4. External plant equipment added, Level 0.

5. Flues revised, Roof level.

6. Roof openings & access hatch added/revised, Roof level.

7. East entrance passageway levels revised, Level 0.

8. East entrance passageway and Stair 3 works revised.

9. Relocation of cycle parking and bin store, including canopies, Level 0.

10. Car charging points added and parking bays adjusted to suit, Level 0 courtyard.

11. Works to TP1 facade.

Cycle Storage Legend

<p>CYCLE SPACES REQUIRED</p> <p>New Building (TP2) Cycle spaces required</p> <p>Occupancy: 317</p> <p>Staff/student ratio: 1 out of 6 occupants are staff / 5 out of 6 occupants are students.</p> <p>Cycle parking requirement for new build (TP2): 1 long stay space per 4 staff + 1 long stay space per 20 FTE students, + 1 short stay space per 7 FTE students.</p> <p>Long stay provision for staff = 13.2 spaces</p> <p>Long stay students = 13.2</p> <p>Short stay for students = 37.7</p> <p>TOTAL = 64 spaces required</p> <p>Existing Building (TP1) cycle storage required (see drawing PL(00)39:</p> <p>TOTAL = 24 spaces required.</p> <p>Total of TP2 + TP1 cycle spaces required</p> <p>TOTAL = 24 + 64 = 88 spaces required.</p>	<p>CYCLE SPACES PROPOSED</p> <p>Ground floor level external areas</p> <p>'Sheffield' Hoop racks: 43 racks, providing 44 spaces.</p> <p>Basement Level internal racks</p> <p>'Josta' type 2 tier racks: 46 spaces.</p> <p>Total of internal and external spaces</p> <p>TOTAL = 90 spaces proposed.</p>	<div><div></div><div>Cycle rack (Note: all external racks are 'Sheffield' Hoop type. Internal racks are 2 tier 'Josta' type racks).</div></div> <div><div></div><div>Lockers</div></div> <div><div></div><div>Showers</div></div>
---	---	---

