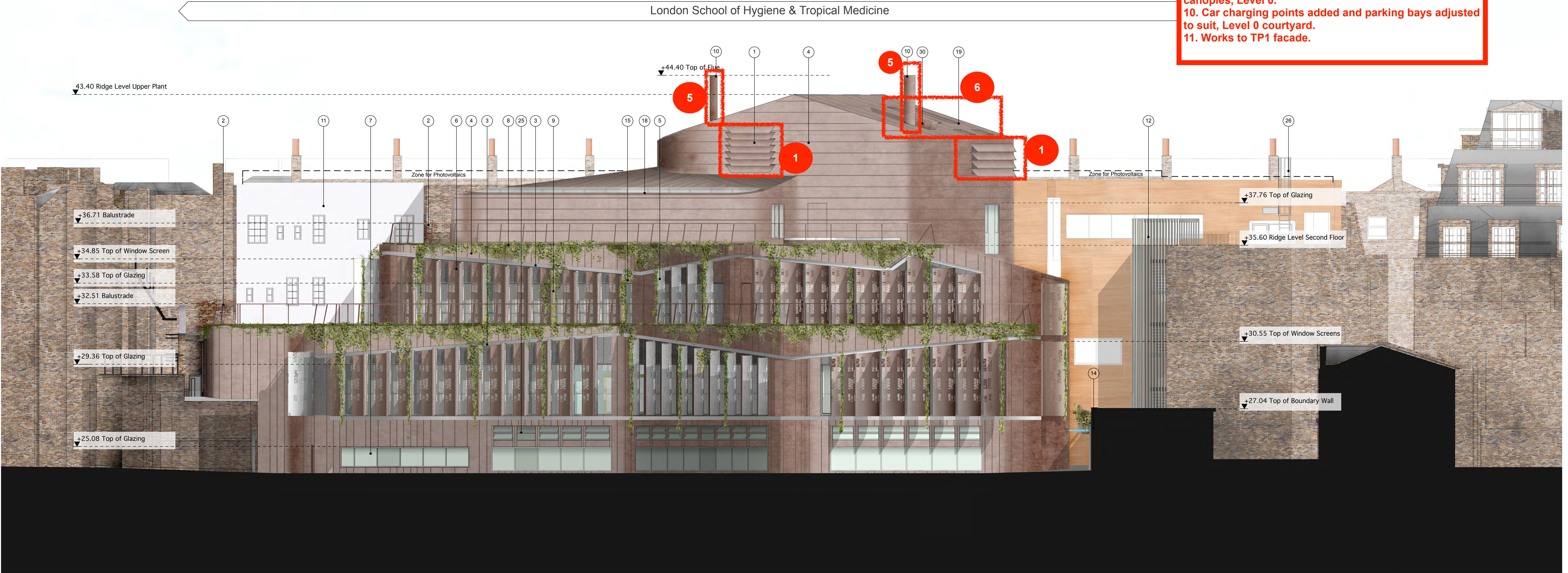


LIST OF CHANGES (LOCATIONS AS LABELLED)

1. Louvre design and arrangement updated, Level 4.
2. Louvred vent added to Gas Meter Room, Level 0.
3. External access doors to plant room omitted, Level 4.
4. External plant equipment added, Level 0.
5. Flues revised, Roof level.
6. Roof openings & access hatch added/revised, Roof level.
7. East entrance passageway levels revised, Level 0.
8. East entrance passageway and Stair 3 works revised.
9. Relocation of cycle parking and bin store, including canopies, Level 0.
10. Car charging points added and parking bays adjusted to suit, Level 0 courtyard.
11. Works to TP1 facade.



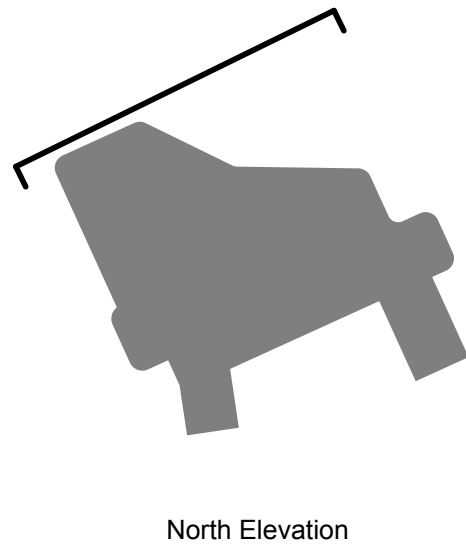
TP2

London School of Hygiene & Tropical Medicine

KEY

- | | |
|---|---|
| (1) Plantroom Louvres | (20) Metal cladding to new and retained switchroom walls |
| (2) Balustrade | (21) Panel cladding |
| (3) Channel in silver finish work | (22) Retained and modified existing metal roof, with metal cappings |
| (4) Brass finish metal sheet cladding with a standing seam | (23) Concrete column |
| (5) Silver finish metal finish to rear of privacy screen | (24) Brick wall with metal balustrade |
| (6) Privacy screen - Brass finish metal sheet with standing seam (custom perforation) | (25) Glazed opening vents with metal panel surround |
| (7) Curtain Walling | (26) Metal ladders |
| (8) Green / Blue Roof | (27) Metal steps |
| (9) Climbing Plants to the edge of privacy screens | (28) Metal louvres |
| (10) Flue: Colour coated finish | (29) Existing painted brickwork redecorated |
| (11) White insulated render | (30) Access hatch |
| (12) Timber cladding | |
| (13) Metal Shutter | |
| (14) Brick | |
| (15) Silver finish Metal Sheet Cladding with a standing seam | |
| (16) Substation metal louvred doors & screen | |
| (17) Removable access panel clad with brass finish metal sheet cladding | |
| (16) Substation metal louvred doors & screen | |
| (17) Removable access panel clad with brass finish metal sheet cladding | |
| (18) Glazed rooftop | |
| (19) Roof openings | |

0m 2 4 6 8 10 20m



North Elevation