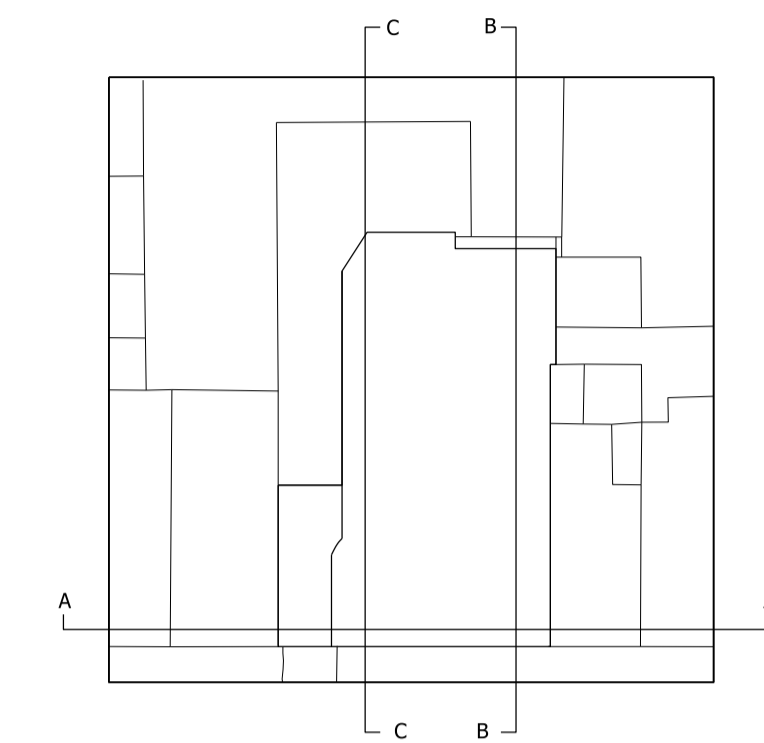


NOTES:
 DO NOT SCALE FROM THIS DRAWING.
 ALL DIMENSIONS TO BE CHECKED ON SITE.
 ALL OMISSIONS AND DISCREPANCIES TO BE REPORTED TO THE ARCHITECT IMMEDIATELY.

ALL RIGHTS RESERVED. THIS WORK IS COPYRIGHT AND CANNOT BE REPRODUCED OR COPIED OR MODIFIED IN ANY FORM OR BY ANY MEANS, GRAPHIC ELECTRONIC OR MECHANICAL, INCLUDING PHOTOCOPYING WITHOUT THE WRITTEN PERMISSION OF SQUIRE AND PARTNERS ARCHITECTS.



no. 46 no. 47 no. 48 no. 49 no. 50 no. 51 no. 52 no. 53 no. 54 no. 55 - 59

01 PROPOSED FRONT ELEVATION



Issued for Planning	07/06/22	WS	E
Issued for Planning	27/05/22	WS	D
Issued for Planning	14/12/18	RB	C
Issued for Planning	06/12/18	GH	B
Issued for Planning	03/10/18	GH	A
Issued for Information	16/04/18	GH	-
Revision description	Date	Check	Rev

SQUIRE & PARTNERS

The Department Store
 248 Ferndale Road, London, SW9 8FR
 T: 020 7278 5555 F: 020 7239 0495
 info@squireandpartners.com
 www.squireandpartners.com

Project
51-52 Tottenham Court Road,
 London. W1T

Drawing
Front Elevation
 Proposed

Drawn	Date	Scale
JKL	09/04/2018	1: 100@A1 1: 200@A3
Job number	Drawing number	Revision
13081	C645_E_NE_002	E