

Contractor to confirm all dimensions.
HHD not liable for seeking relevant planning authority permissions (including LBC) unless specifically directed by the client

Overhead panel with central split mullion
2no. Manual Thumb Turns Finish RAL 9017
Mag Locks at base linked to fire alarm- Cover plate Finish RAL 9017
Corston Antique Brass Back-to-Back Handles: Ref Harper Double Pull Antique Brass 10318 <https://www.corston.com/products/harper-single-pull-handle-500mm-antique-brass> Tel:(+44) 01249 549332 Total length 522mm. See Image 01

New Crittall Style Double Door Set in Metal Frame - finish RAL 9017. Transoms to align with Side Light Panels

2no. New Single Glazed Crittall Style Side Light Panels to match proportions of existing

Mag Locks at base linked to fire alarm- Cover plate Finish RAL 9017. Power supplied by low level conduit running in line with base frame- see Image 02. Black finish

2no. Manual Thumb Turns Finish RAL 9017

Note: Antique Brass Hinges - Number and specification to accommodate weight of doors: To be determined by manufacturer.

Door Manufacturer to ensure Door complies with current BS standards and regs

Please also refer to HHD Dwg No. 371 for Section B-B of new door sets

2no. Proposed Front Main Entrance Elevations East & West
Shropshire House
1:50 @ A3

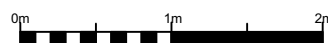


Image 01: Antique Brass Handrail



Image 02: Power supply to Lower Mag Lock

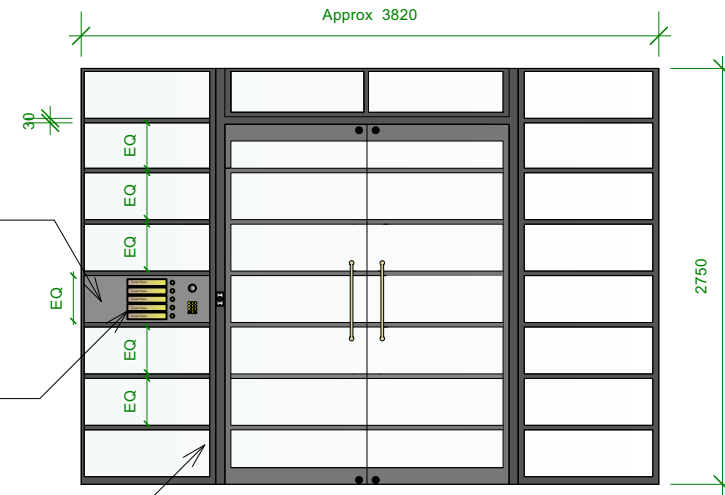


Image 03: Existing Access & Lazari Signage arrangement

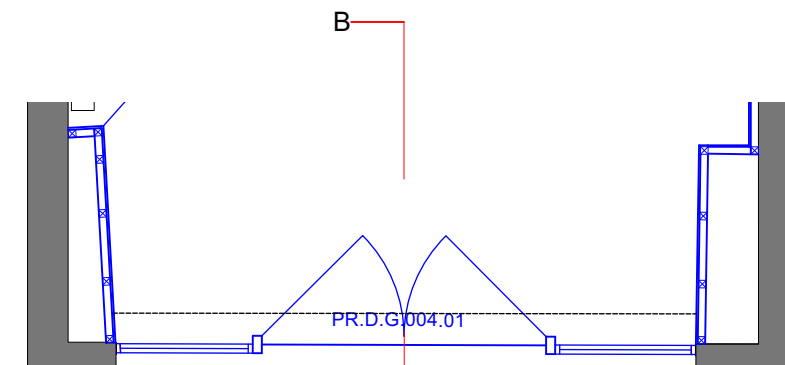
Infill glazed section to facilitate provision of tenant call buttons and push-code entry system.
Elec contractor to confirm if system is to be retained or replaced to interface with new access control system for tenants
Possible requirement for 'Lazari' logo to be included on panel- see Image 03.
Finish of entry push & call buttons: Antique Brass

Each tenant name plate panel to be adhesive fixed to face of infill panel: Antique Brass finish with black lettering See Image 03

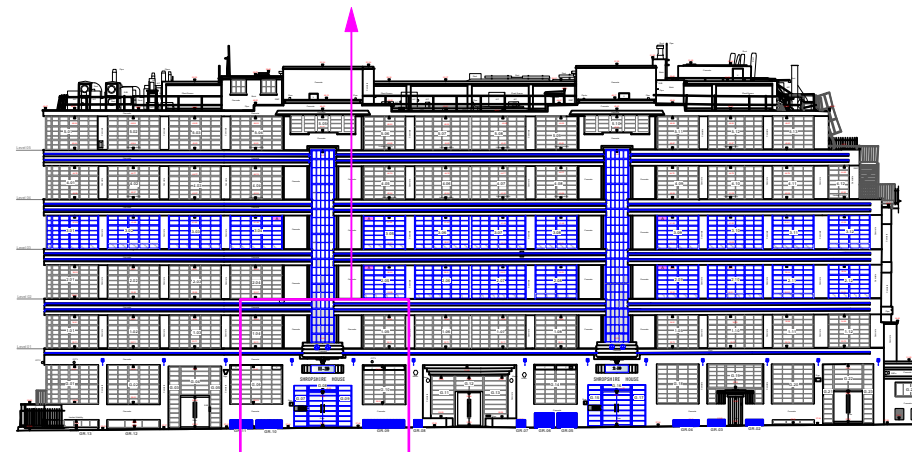
Tubular Frame System. Schuco Janisol System Eco 50 or 60



FRONT (EXTERNAL) ELEVATION



PROPOSED PLAN



-	11.07.22	First Issue	CMD
No.	Date	Revisions / Submissions	Revised by



HamburyHirdDesign

Design Firm
HamburyHird Design Ltd.
50-52 Wellsway
Bath
BA2 4SA
Telephone: 01225 336004

Stage
PLANNING

Project Title
Shropshire House
11-20 Capper Street
London.WC1E 6JA

Drawing Title
2no. Proposed Front Main Entrance Elevations East & West

Project Manager	RH	Project ID	253
Drawn By	CMD	CAD File Name	253.100.01 Proposed External Elevations- Shropshire House.vwx
Reviewed By	RH	Drawing No.	253.271.01
Date			
Scale	1:50 @ A3		