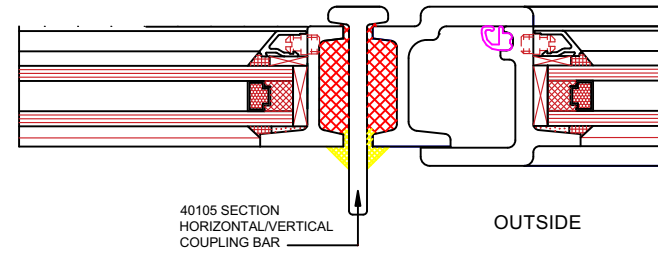


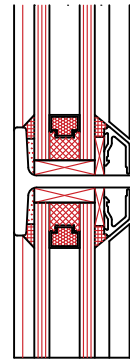
Critical Windows Ltd Corporate W20 Range www.critical-windows.co.uk
 - Generally manufactured in accordance with BS 6510, W20 Section
 - Weathertightness: To BS 6375: Part 1
 Exposure Category (Design Wind Pressure): 1200/2000 (Pa) see Table AA
 - For air permeability, water-tightness and wind resistance data see Table AA
 - Operation and strength characteristic: To BS 6375: Part 2
 - Construction: All frames welded corners and are flat and square within normal manufacturing dimensional tolerances of +/- 1.5mm. Intermediate bars are hot tenon riveted
 - Galvanizing: All components including steel attachments, coupling members and ancillaries: hot-dipped after manufacture to BS EN ISO 1461
 - Glazing details: will accept double glazing up to 16.4mm in thickness. Glazing beads present no horizontal ledges on which dust and dirt can gather
 - Weatherstripping: Gaskets complying with BS 4255: Part 1, manufactured from EPDM, secured into grooves of opening frame with adhesive



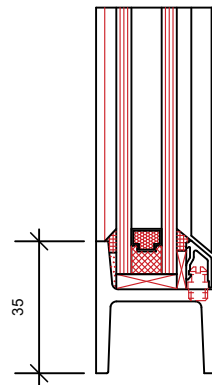
Image of W20 Range Glazing (in situ)



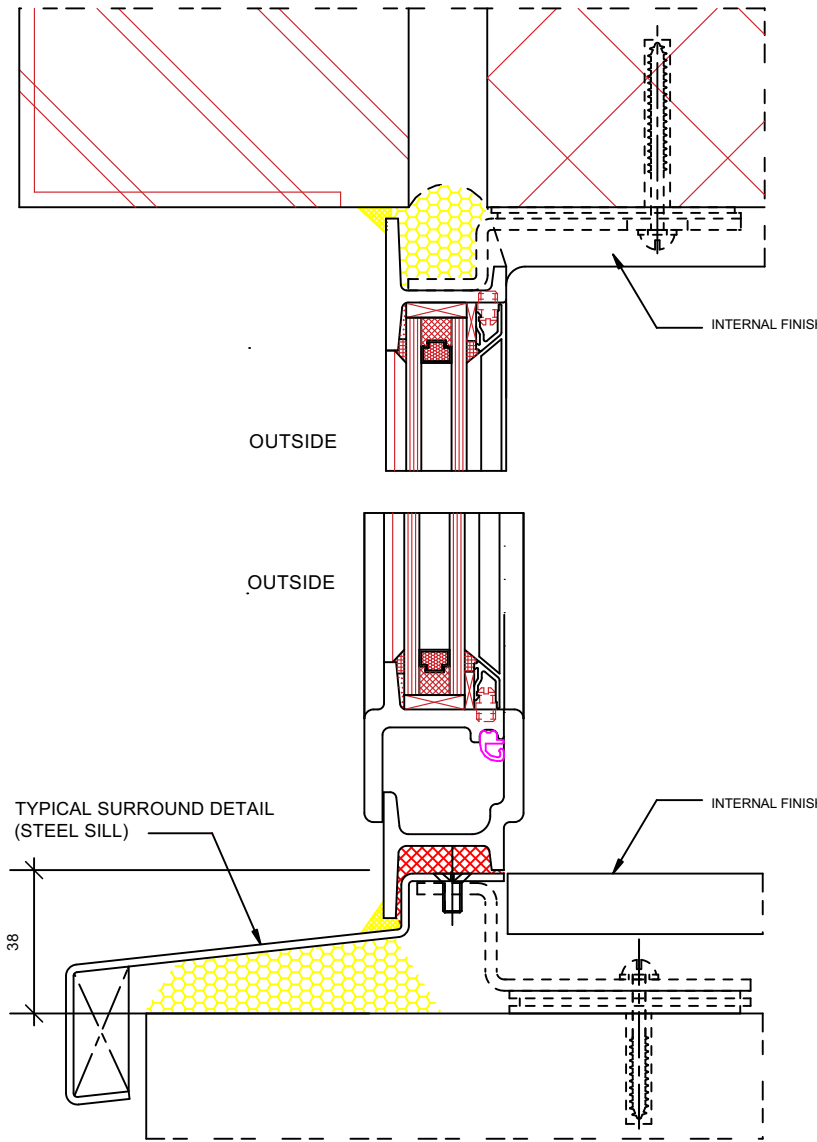
Coupling Detail 1:2



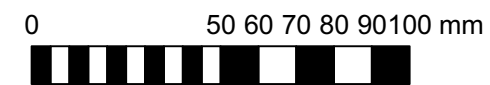
Glazing Bar Detail 1:2



Sectional Window Detail:
Equal Long Leg 1:2



Typical Surround Detail 1:2



Site Measurements not to be taken from drawings.
 Contractor to confirm all dimensions.
 HHD not liable for seeking relevant planning authority permissions (including LBC) unless specifically directed by the client

-	11.07.22	First Issue	CMD
No.	Date	Revisions / Submissions	Revised by



Design Firm
HamburyHird Design Ltd.
 50-52 Wellsway
 Bath
 BA2 4SA
 Telephone: 01225 336004

Stage
PLANNING

Project Title
Shropshire House
 11-20 Capper Street
 London.WC1E 6JA

Drawing Title
 Typical External Glazing Details

Project Manager	RH	Project ID	253
Drawn By	CMD	CAD File Name	253.100.01 Proposed External Elevations- Shropshire House.vwx
Reviewed By	RH	Drawing No.	253.406
Date			
Scale	1:2 @ A3		

Typical External Glazing Details
 Shropshire House
 1:2 @ A3