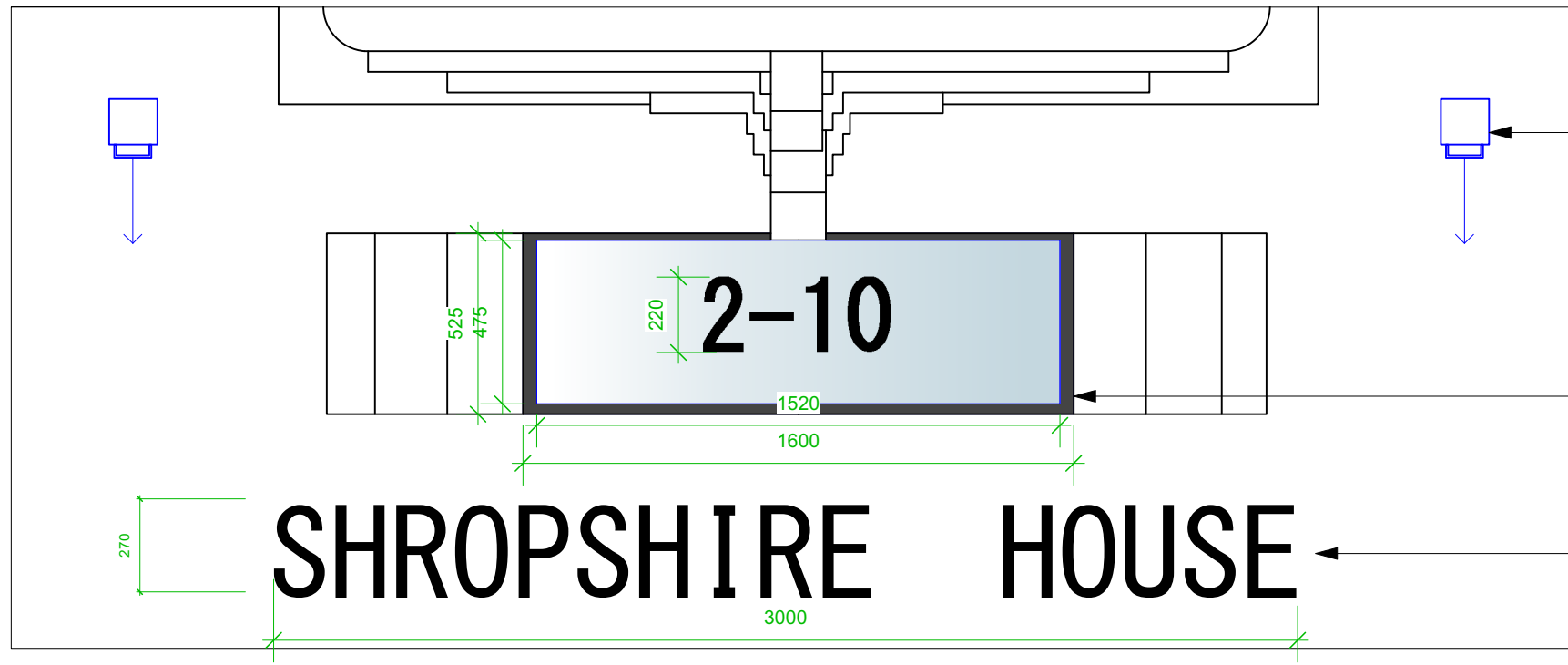


Site Measurements not to be taken from drawings.  
Contractor to confirm all dimensions.  
HHD not liable for seeking relevant planning authority permissions (including LBC) unless specifically directed by the client



2no. faced fixed wall washing external light fittings ref DL1:  
Iguzzini 1-PRO BX03  
170mm H x 140mm D x 132mm H  
White finish to fitting

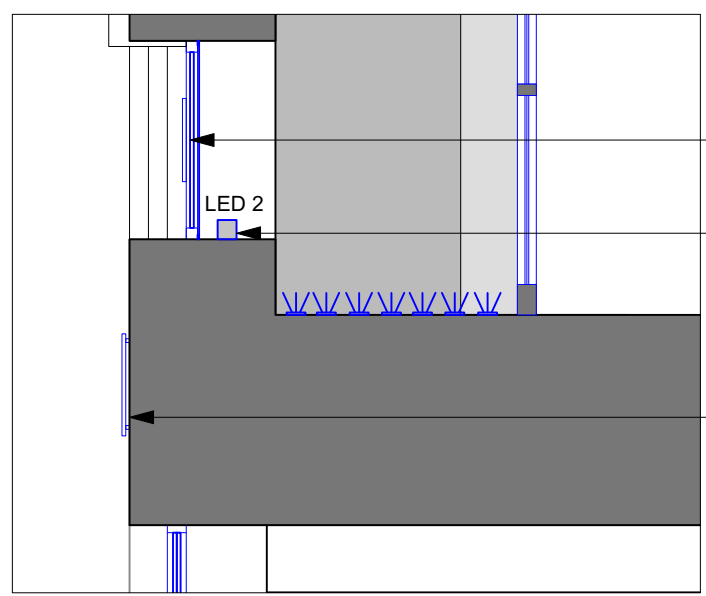
Existing grill to be replaced with toughened opaque glass panel (rear illuminated with light fitting ref LED 2) with black 'crittall style' frame.  
Frame front fixed with recessed screw heads (black) for removal/ access to light fitting at rear  
Existing building number signage to be replaced with fret cut stainless steel building numbers powder coated (RAL 9017) applied direct to glass panel. HHD to approve manufacturing drawings prior to production.  
**Font style: MS Gothic or similar**

New 'Shropshire House' signage, existing building signage to be replaced with fret cut stainless steel letters powder coated (RAL 9017) to be pinned from face of elevation.  
HHD to approve manufacturing drawings prior to production.  
**Font style: MS Gothic or similar**

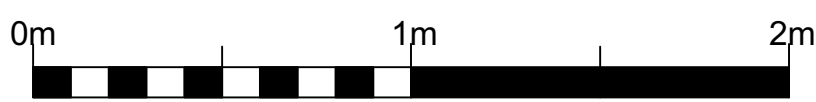
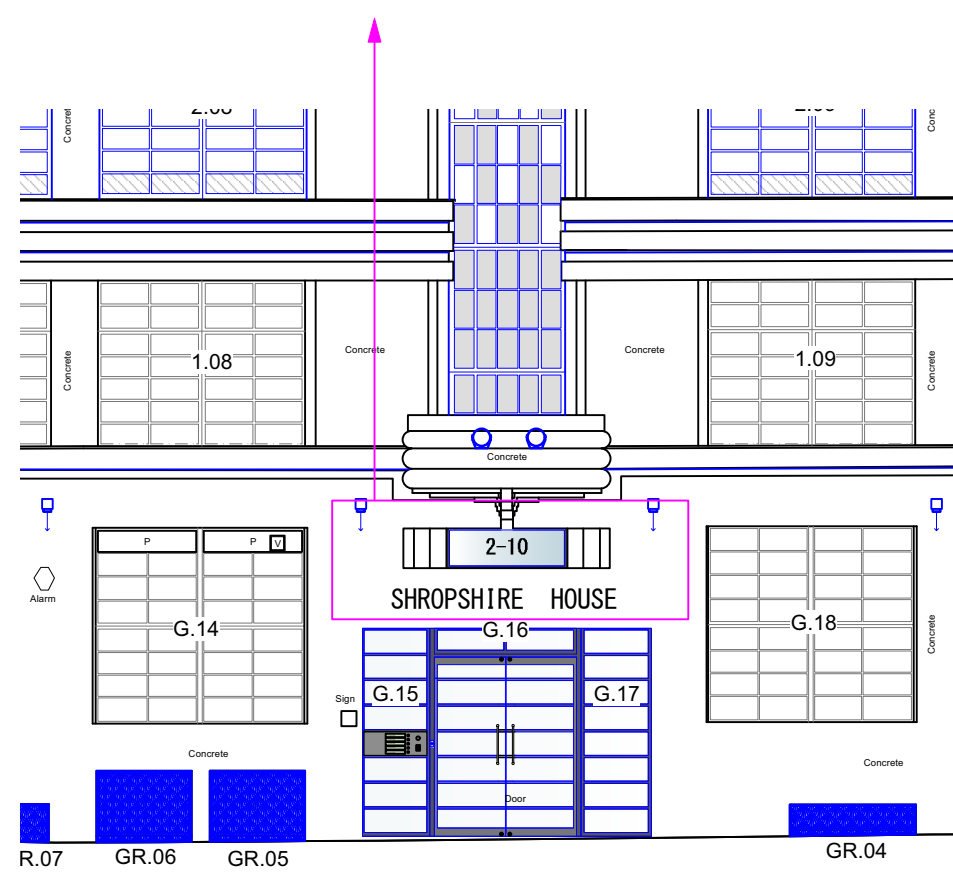
Existing grill to be replaced with toughened opaque glass panel (rear illuminated with light fitting ref LED 2) with black 'crittall style' frame.  
Frame front fixed with recessed screw heads (black) for removal/ access to light fitting at rear  
Existing building number signage to be replaced with fret cut stainless steel building numbers powder coated (RAL 9017) applied direct to glass panel. HHD to approve manufacturing drawings prior to production.  
**Font style: MS Gothic or similar**

New LED Fittings (ref LED2- Varoiled Flex Hydra) fixed to area behind opaque glass panel

New 'Shropshire House' signage, existing building signage to be replaced with fret cut stainless steel letters powder coated (RAL 9017) to be pinned from face of elevation.  
HHD to approve manufacturing drawings prior to production.  
**Font style: MS Gothic or similar**



Section 1 - 1:20



**Proposed Front Elevation Lettering Detail - West**  
Shropshire House  
1:20 @ A3

-	xx.06.22	First Issue	CMD
No.	Date	Revisions / Submissions	Revised by



Design Firm  
**HamburyHird Design Ltd.**  
50-52 Wellsway  
Bath  
BA2 4SA  
Telephone: 01225 336004

Stage  
**PLANNING**

Project Title  
**Shropshire House**  
11-20 Capper Street  
London.WC1E 6JA

Drawing Title  
**Proposed Front Elevation Lettering Detail - West**

Project Manager	RH	Project ID	253
Drawn By	CMD	CAD File Name	253.100.01 Proposed External Elevations- Shropshire House.vwx
Reviewed By	RH	Drawing No.	<b>253.400.02</b>
Date			
Scale	1:20 @ A3		