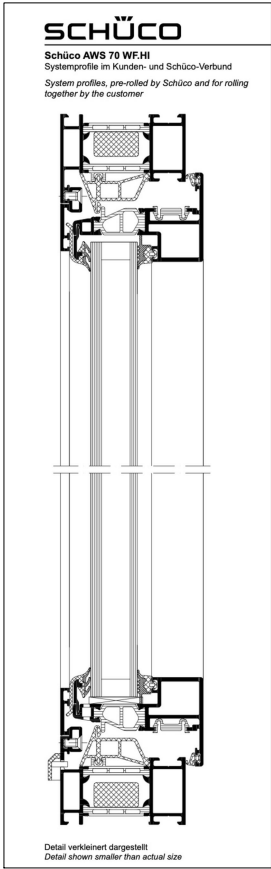


1. Plan detail - sequential  
Scale:1/5



4. Window data



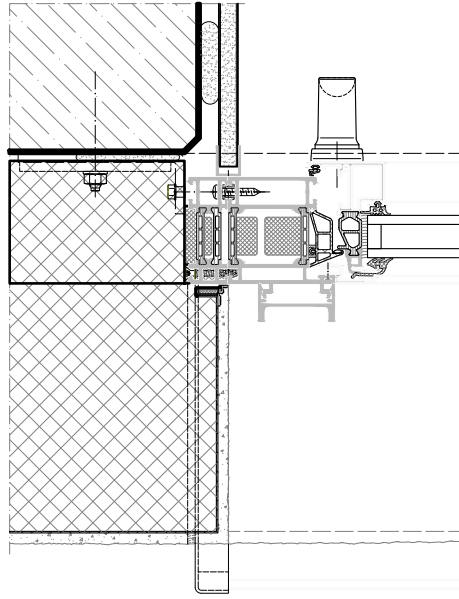
- Features and benefits**
- Window façade with narrow external face width of 50 mm
  - Concealed block windows
  - Also available with flush-fitted vents
  - Graduated mullion, transom and outer frame options in Residential Line look
  - Large span widths due to an extensive range of structural mullions
  - Wide range of design options due to an extensive range of profiles and cover caps
  - Efficient solution for ribbon windows
  - Benefit of utilised frame fabrication compared with façade units
  - Profiles available in a variety of colours
  - Concealed drainage
  - Drainage at the lowest profile point
  - Concealed Schüco AvanTec system fittings up to 160 kg

Prüfungen und Normen** Tests and standards**	
Wärmedämmung nach DIN EN ISO 1077-2 Thermal insulation in accordance with DIN EN ISO 1077-2	U <sub>i</sub> = 1.9 - 2.2 W/(m²K)
Schalldämmung nach DIN EN ISO 140-3 Sound insulation in accordance with DIN EN ISO 140-3	bis/to R <sub>w</sub> 45 dB
Einbruchhemmung nach DIN V ENV 1627 (DIN EN 1627) Burglar resistance in accordance with DIN V ENV 1627 (DIN EN 1627)	Klasse/ Class WK1 (RC 1)
Luftdurchlässigkeit nach DIN EN 12207 Air permeability in accordance with DIN EN 12207	Klasse/ Class 4
Schlagregendichtheit nach DIN EN 12208 Watertightness in accordance with DIN EN 12208	Klasse/ Class 9a
Windlastwiderstand nach DIN EN 12210* Wind load resistance in accordance with DIN EN 12210*	Klasse/ Class C2/B3
Mechanische Beanspruchung nach DIN EN 13115 Mechanical loading in accordance with DIN EN 13115	Klasse/ Class 4
Dauerfunktion nach DIN EN 12400 Long term functionality in accordance with DIN EN 12400	Klasse/ Class 3

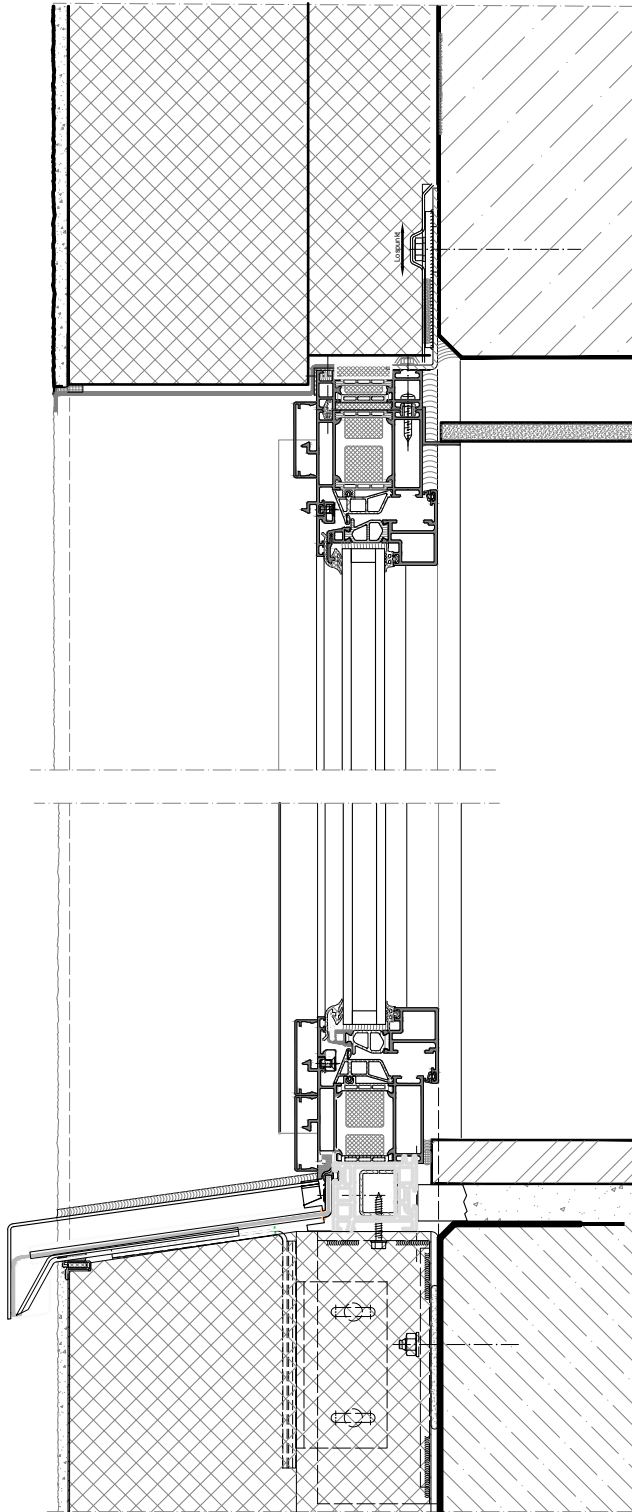
\* Durchbiegungsverhalten profilabhängig  
\* The amount of deflection will depend on the profile

\*\* Die Angaben beschreiben die Bestwerte des Gesamtsystems.  
Die Eigenschaften einer jeweils gewählten Ausführungsvariante oder Elementkombination sind im Einzelfall anhand der ausführlichen Prüfdokumentation zu bestimmen.

\*\* The information describes the optimum values of the entire system.  
The properties of a selected design option or unit combination have to be determined individually based on the comprehensive test documentation.



2. Plan detail  
Scale:1/5



3. Sectional detail  
Scale:1/5

mail@stamosyeoharchitects	Drawing Title:	Note:	Date	Rev.	Stamos Yeoh architects	
1st Floor, Old Town Hall 354 Mare Street London, E8 1HR tel +44(0)2089861280	SCHUCO Window (AWS70WFHI) manufacturer's details	-			Date:	07/03/2022
	Project:				Check by:	Scale: 1:5 @ A3
	30 Lincoln's Inn Fields	Client: The Honorable Society of Lincoln's Inn Fields			Drawing No:	1409/06/001