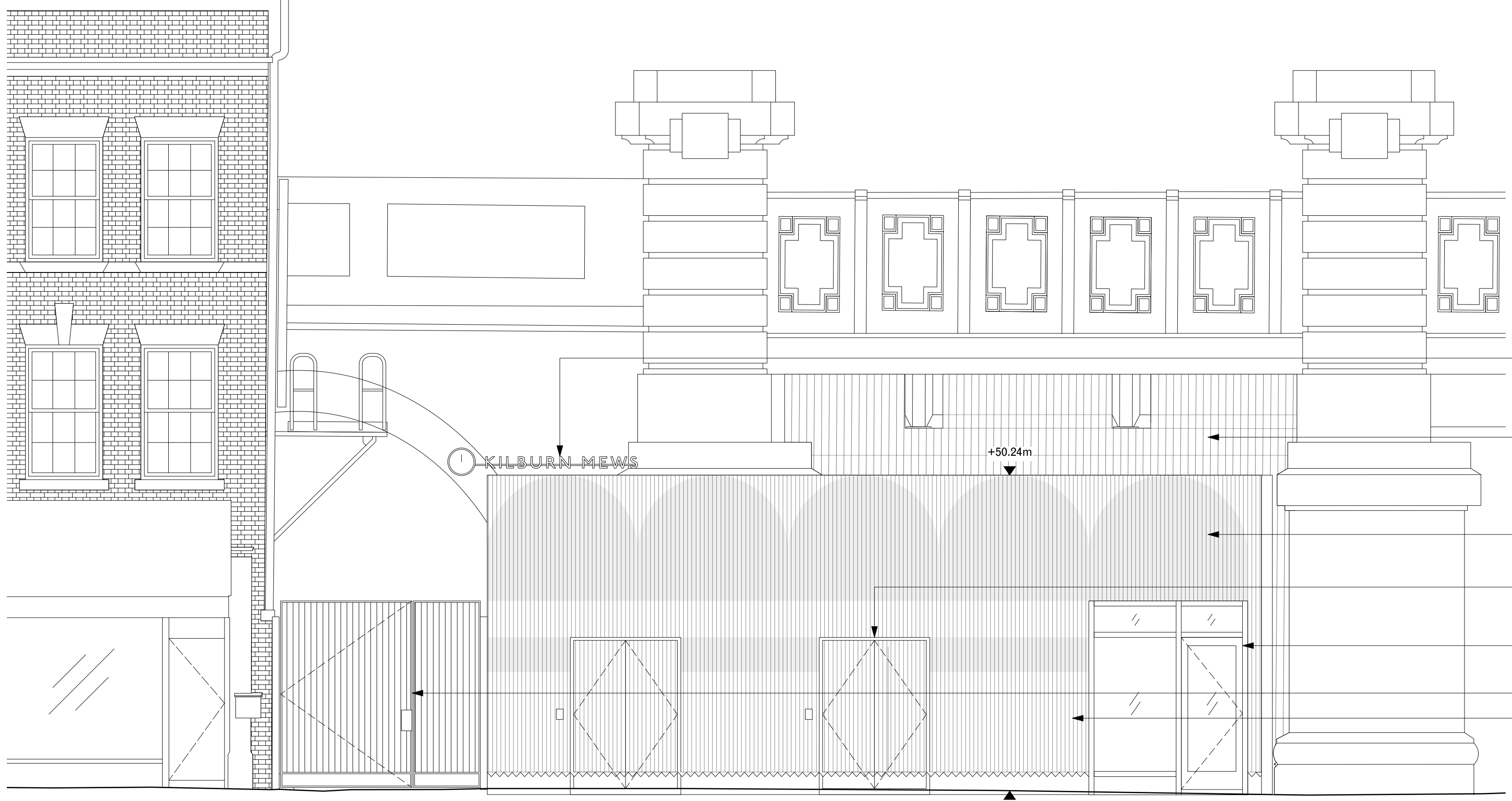
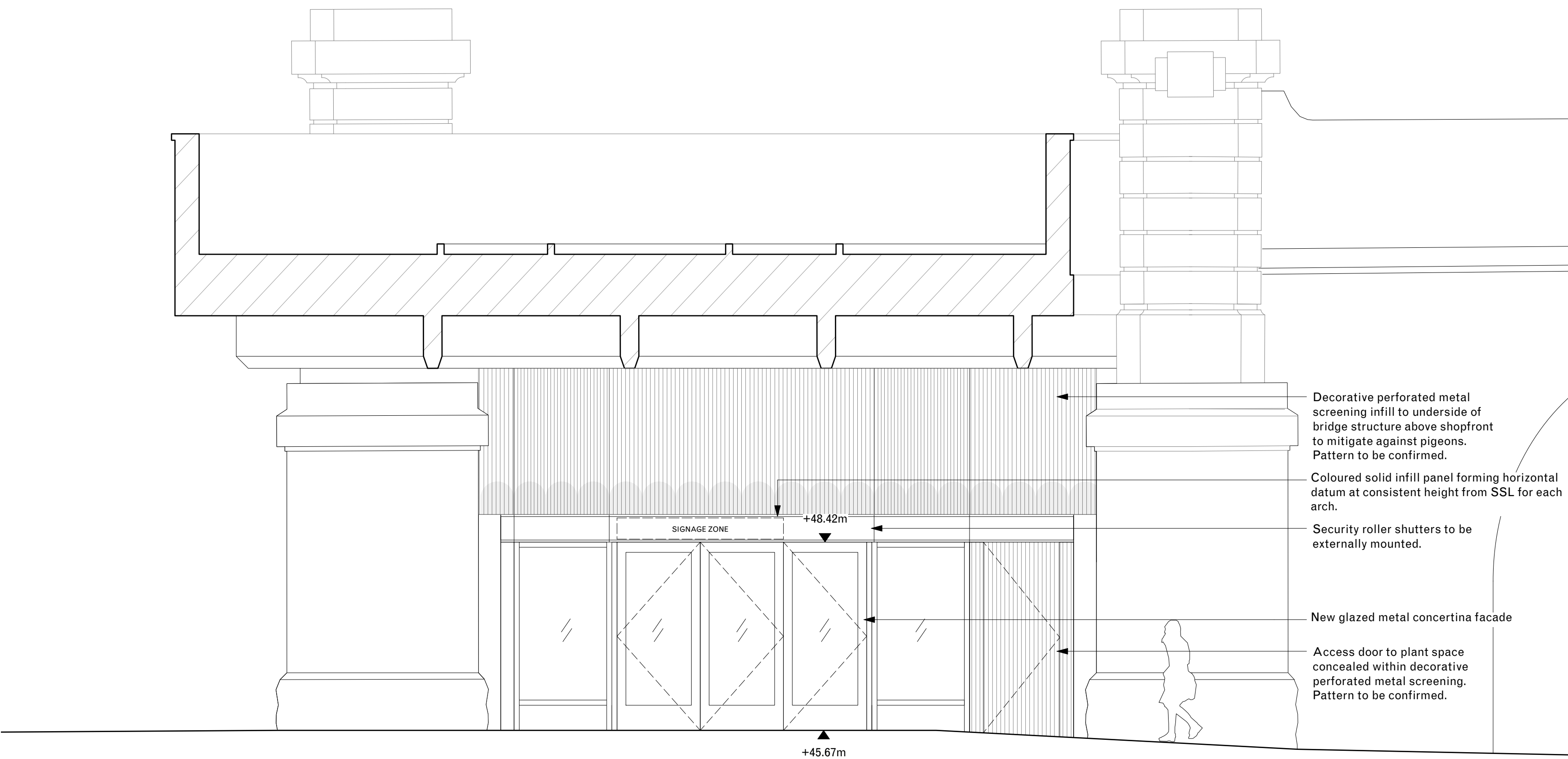


1 North East Elevation



2 North Elevation from Maygrove Road

- Indicative location of high level signage and clock above entrance from Maygrove Road.
- Decorative perforated metal screening infill to underside of bridge structure beyond.
- Decorative perforated metal screening to ASHP compound behind at 1FL.
- Double doors with key pad access control.
- Metal curtain glazed shopfront widow and access to unit 1 from Maygrove Road.
- Access gate to Kilburn Mews.
- Decorative perforated metal screening to refuse store. Pattern to be confirmed.



3 West Elevation from Kilburn High Road

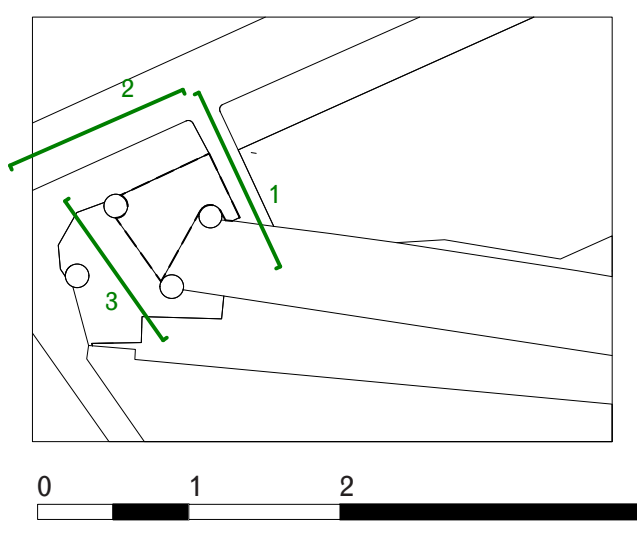
- Decorative perforated metal screening infill to underside of bridge structure above shopfront to mitigate against pigeons. Pattern to be confirmed.
- Coloured solid infill panel forming horizontal datum at consistent height from SSL for each arch.
- Security roller shutters to be externally mounted.
- New glazed metal concertina facade
- Access door to plant space concealed within decorative perforated metal screening. Pattern to be confirmed.

DK-CM

TELEPHONE +44 (0) 207 729 4140
 ADDRESS Unit 12, 5 Durham Yard
 Teesdale Street London, E2 6QF
 EMAIL studio@dk-cm.com
 WEBSITE www.dk-cm.com

PROJECT Kilburn Arches
 CLIENT Transport for London
 DRAWING TITLE Retail Unit 1 / Refuse Store
 DRAWING NUMBER 2108-S3-620--
 DRAWN/CHECKED EP / CM
 SCALE 1:50@A1 1:100@A3
 STATUS Stage 3
 CREATION DATE 07.07.2022

NOTES
 1. All co-ordinates, levels, dimensions and discrepancies are to be reported to the architect immediately.
 2. This drawing is to be read in conjunction with all other Engineers' drawings, details and specification.
 3. For site information and dimensions please refer to commissioned measured survey.
 4. All drawings to be read in conjunction with architectural specification.
 5. Do not scale from these drawings. Use figured dimensions only.
 6. All dimensions in mm.



Revision		
DR1	Draft Planning Set	08/07/2022
DR2	Draft Planning Set	15/07/2022
DR3	Planning draft updates	05/08/2022
-	PLANNING	19/08/2022