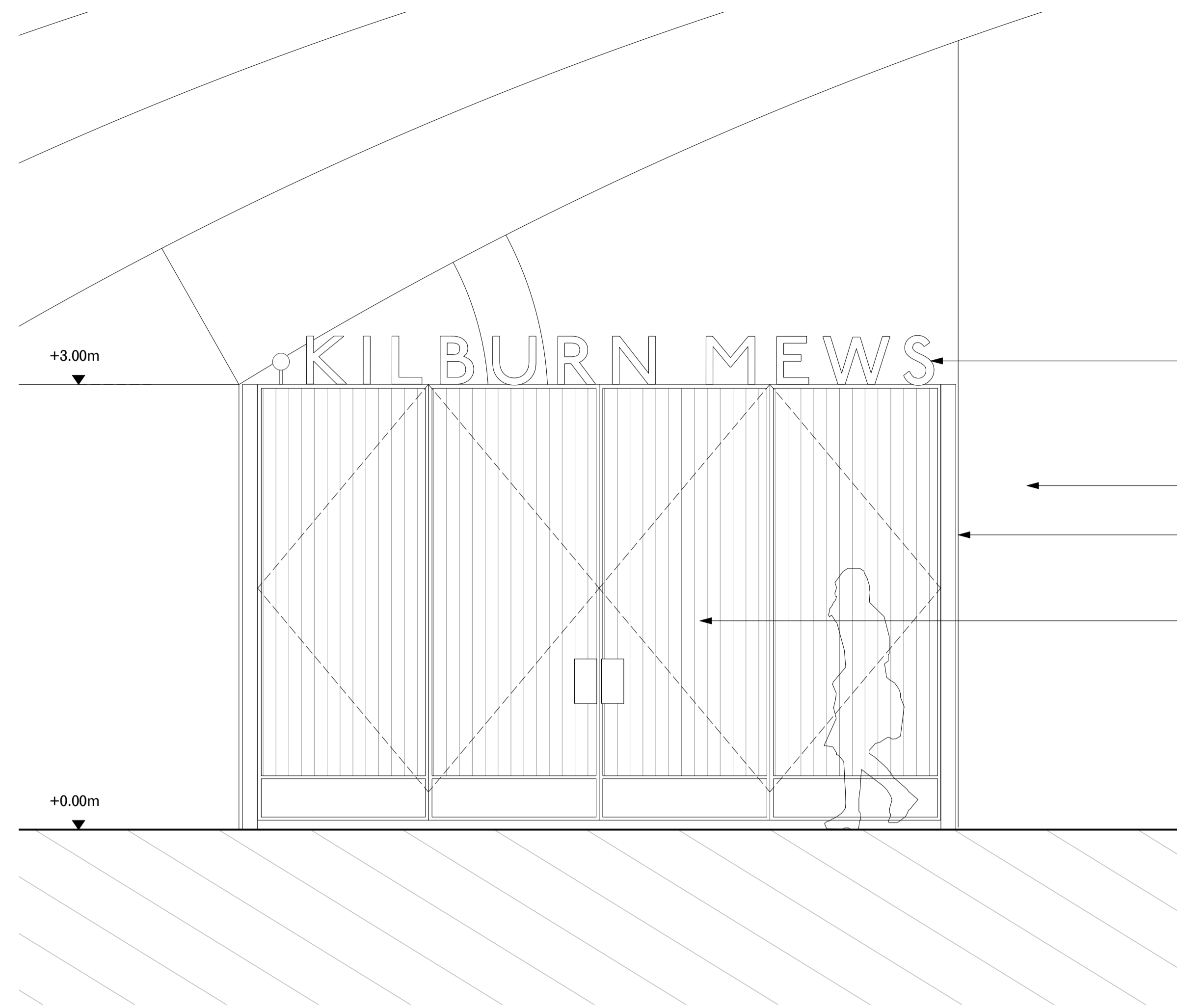


NOTES

1. All co-ordinates, levels, dimensions and discrepancies are to be reported to the architect immediately.
2. This drawing is to be read in conjunction with all other Engineers' drawings, details and specification.
3. For site information and dimensions please refer to commissioned measured survey.
4. All drawings to be read in conjunction with architectural specification.
5. Do not scale from these drawings. Use figured dimensions only.
6. All dimensions in mm.

KEY



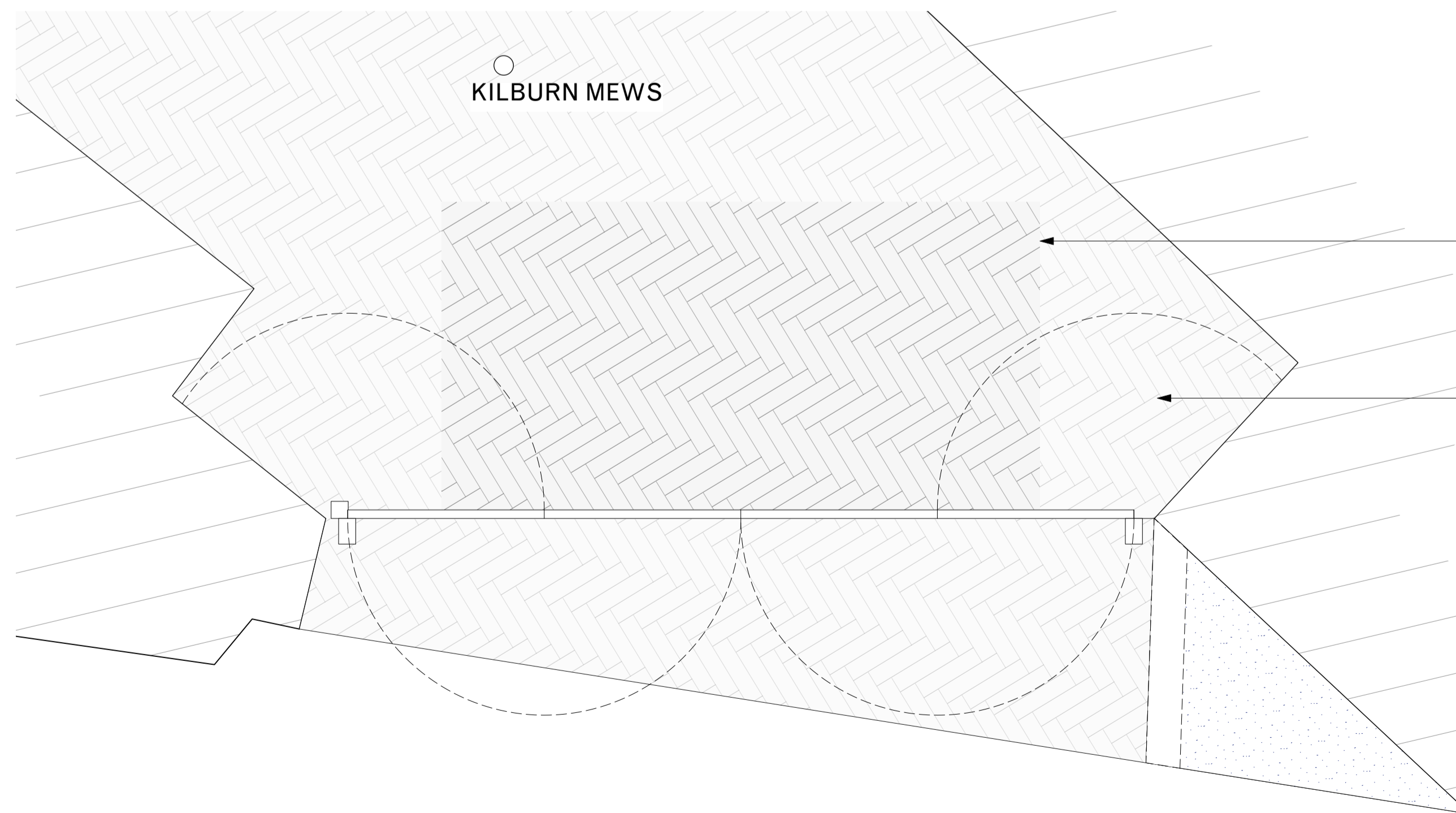
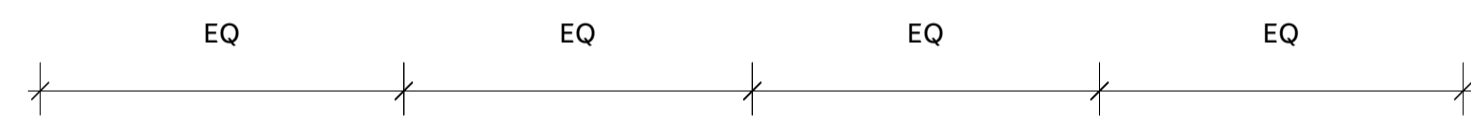
High level signage at entrance to Kilburn Mews.

Existing railway viaduct adjacent to Arch 17.

Steel frame provides support to gate ensuring no structural loading applied to railway viaduct.

Decorative perforated metal screen gates fold to either side when open. Pattern to be confirmed.

1 Elevation
1:25

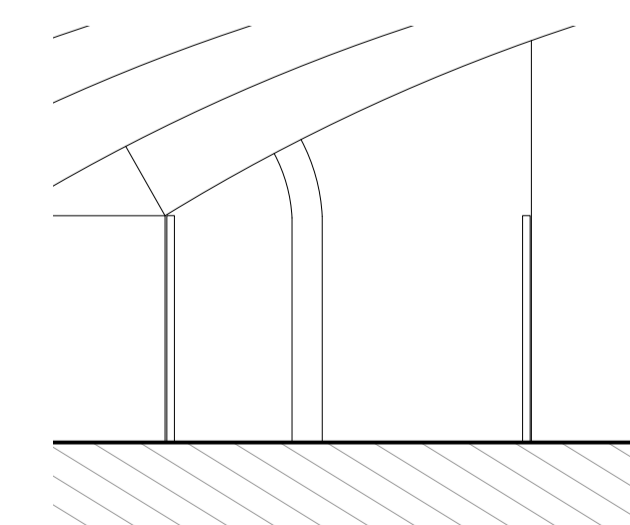


'Entrance mats' constructed in paving with varying colour and pattern to delineate the entrances to the mews. Pattern to be confirmed.

Gates fold into recesses to either side.

4 Plan
1:25

LOVERIDGE ROAD



3 Elevation: Gate in Open Configuration
1:100

Revision

DR1	Draft Planning Set	15/07/2022
DR2	Planning draft updates	05/08/2022
-	PLANNING	18/08/2022