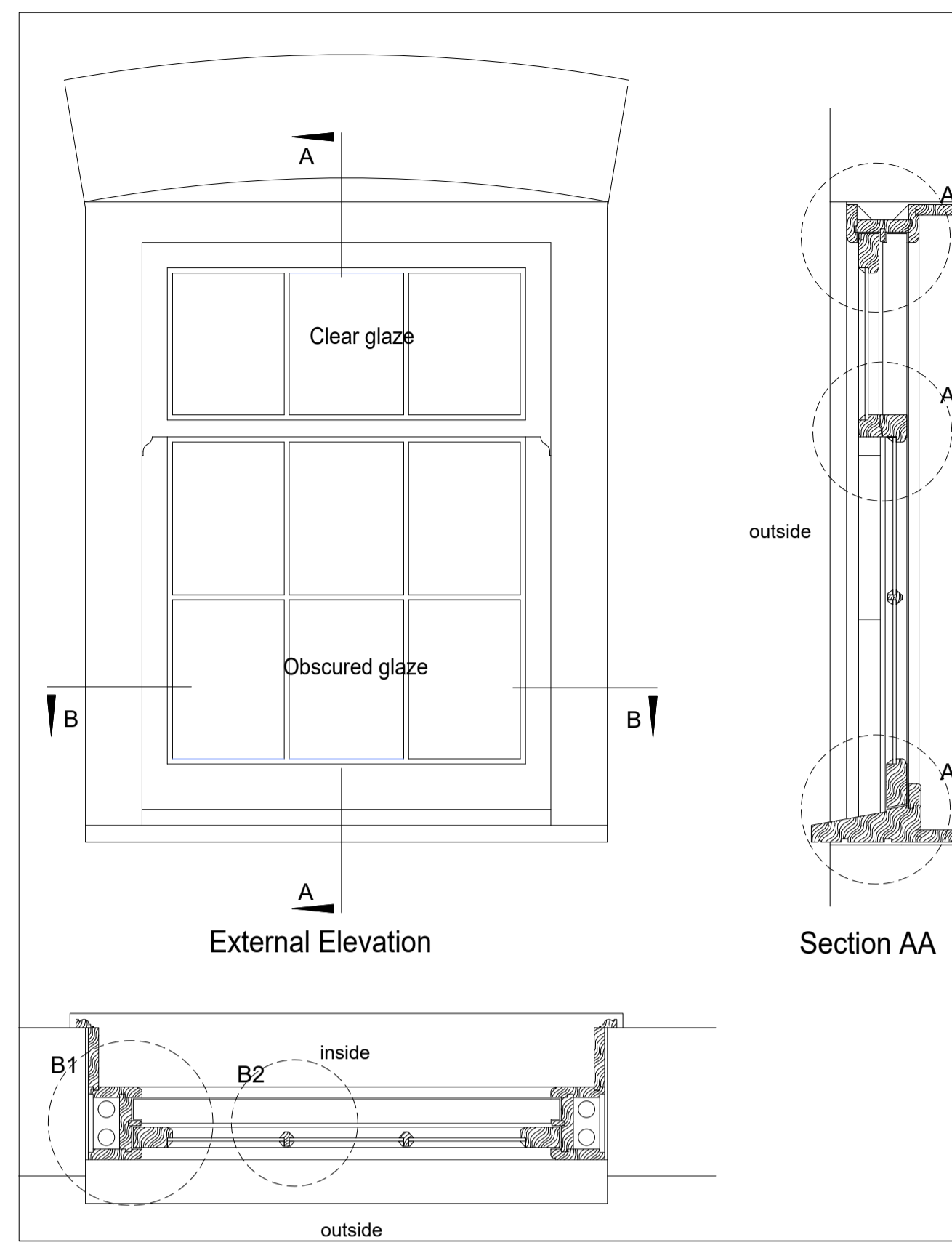
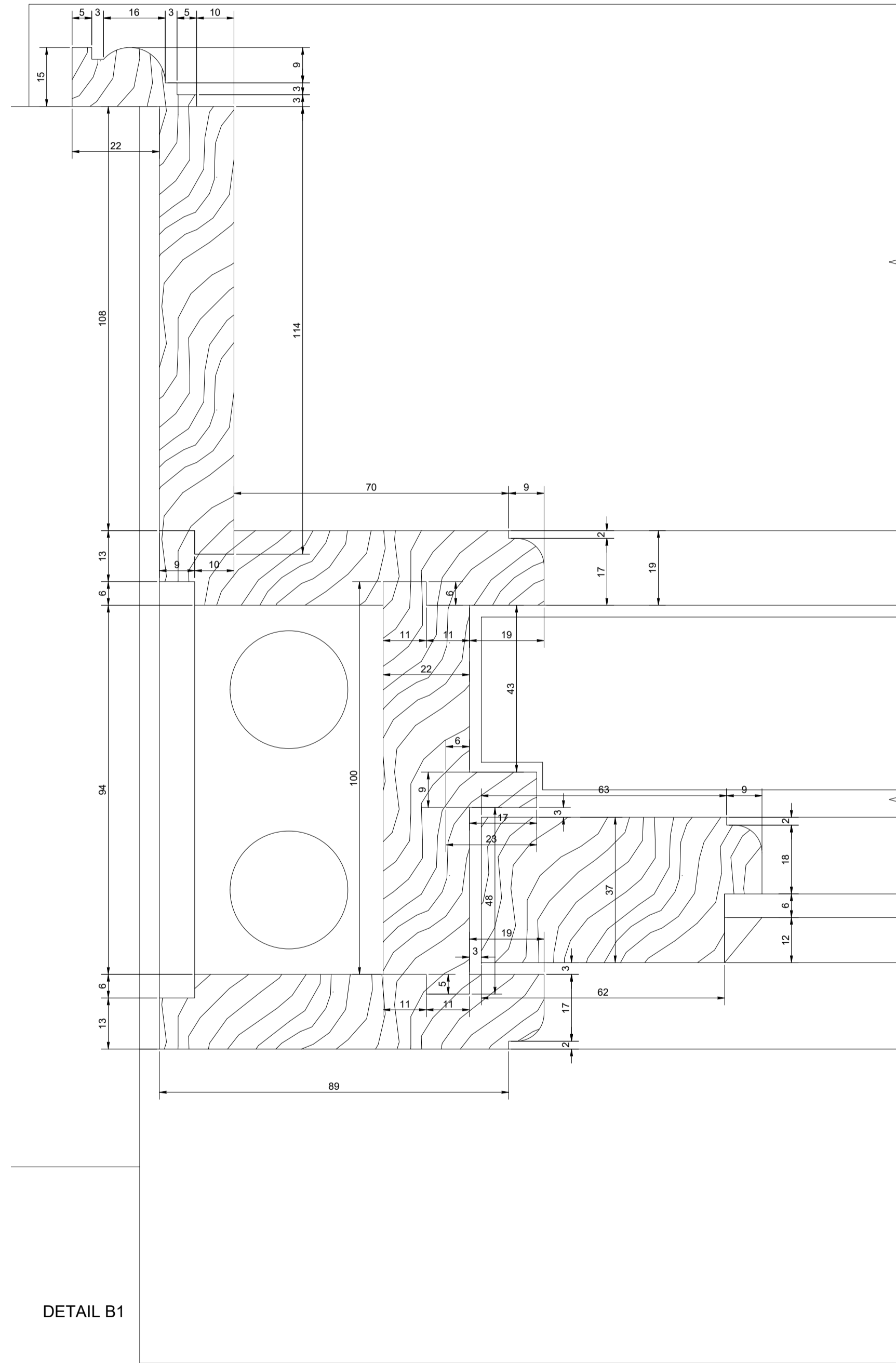
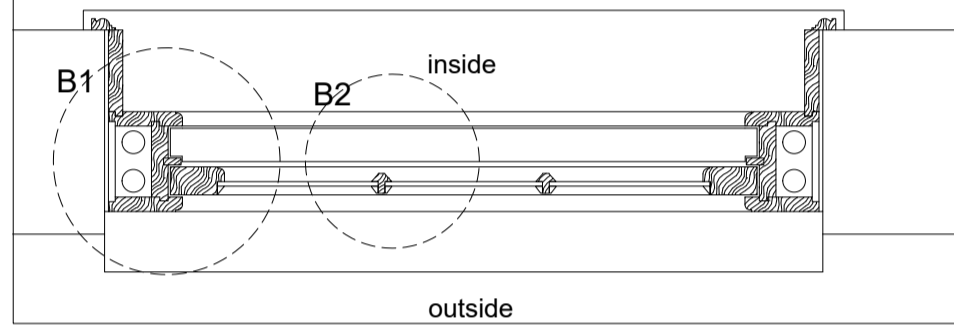


NOTES:

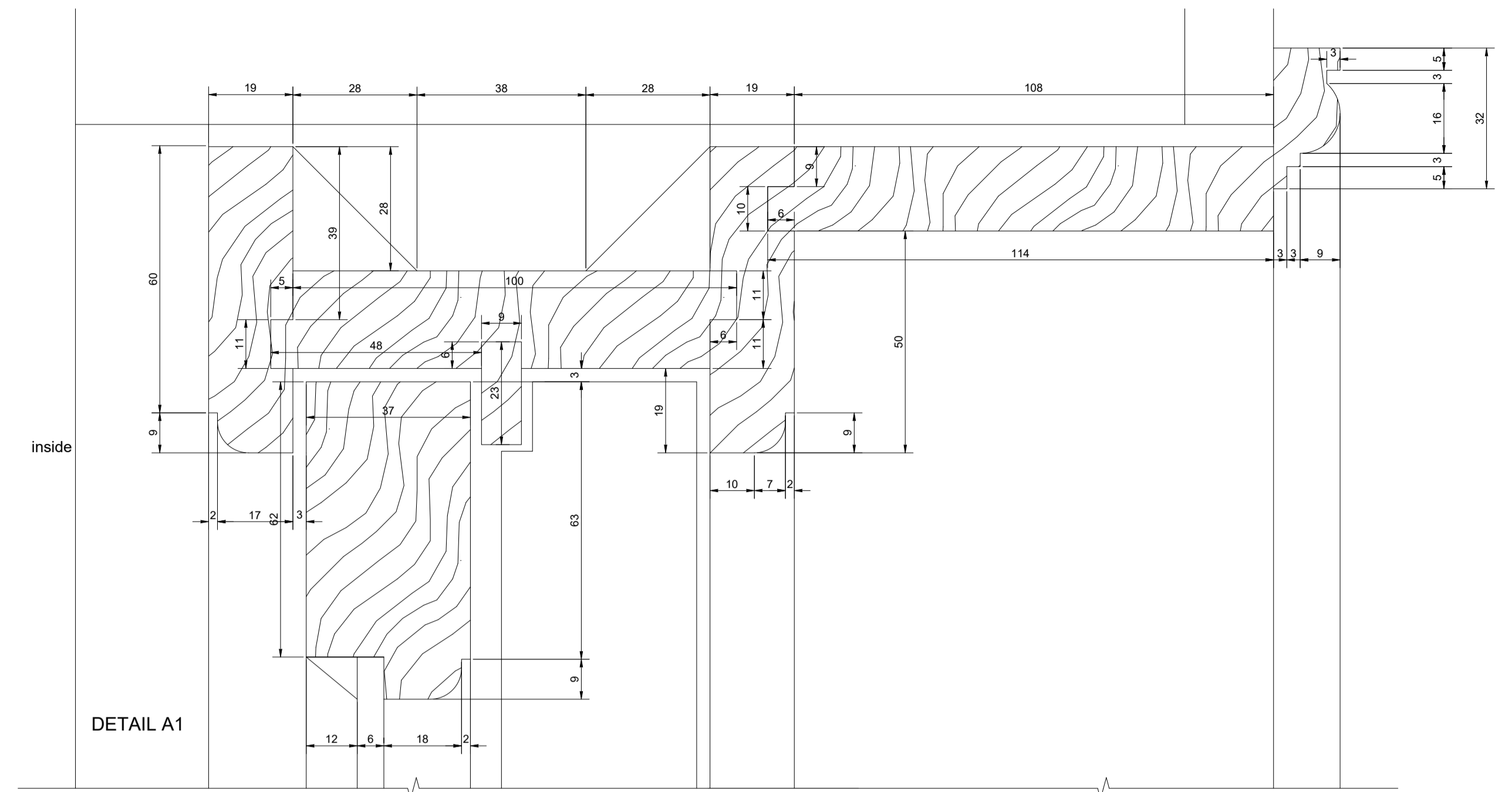
1. Glass to match the existing in weight and thickness.
2. Unless otherwise stated, joinery is to be in hardwood from a sustainable source.
3. All opening casements to be weatherstopped.
4. All dimensions to be checked on site prior to fabrication.
5. Cills to have min 30mm overhang unless agreed otherwise.



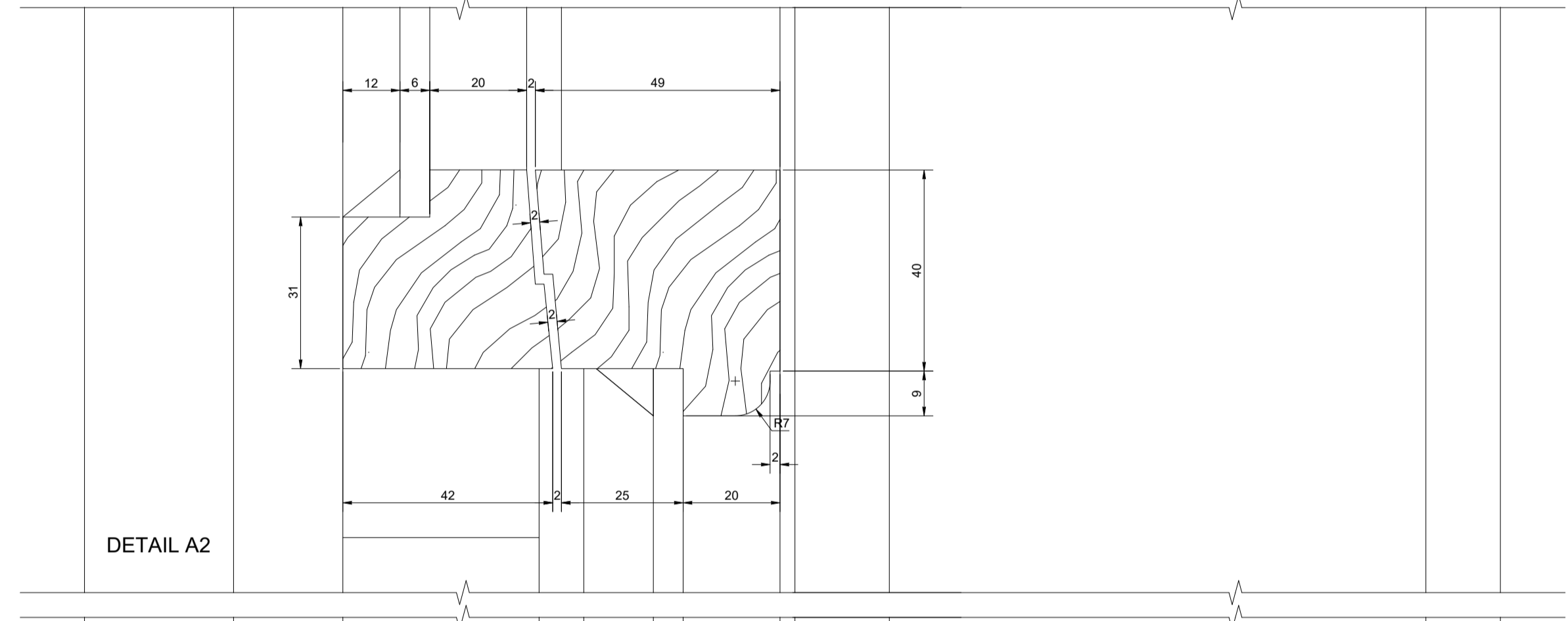
Section BB
KEY DRAWING - scale 1:10



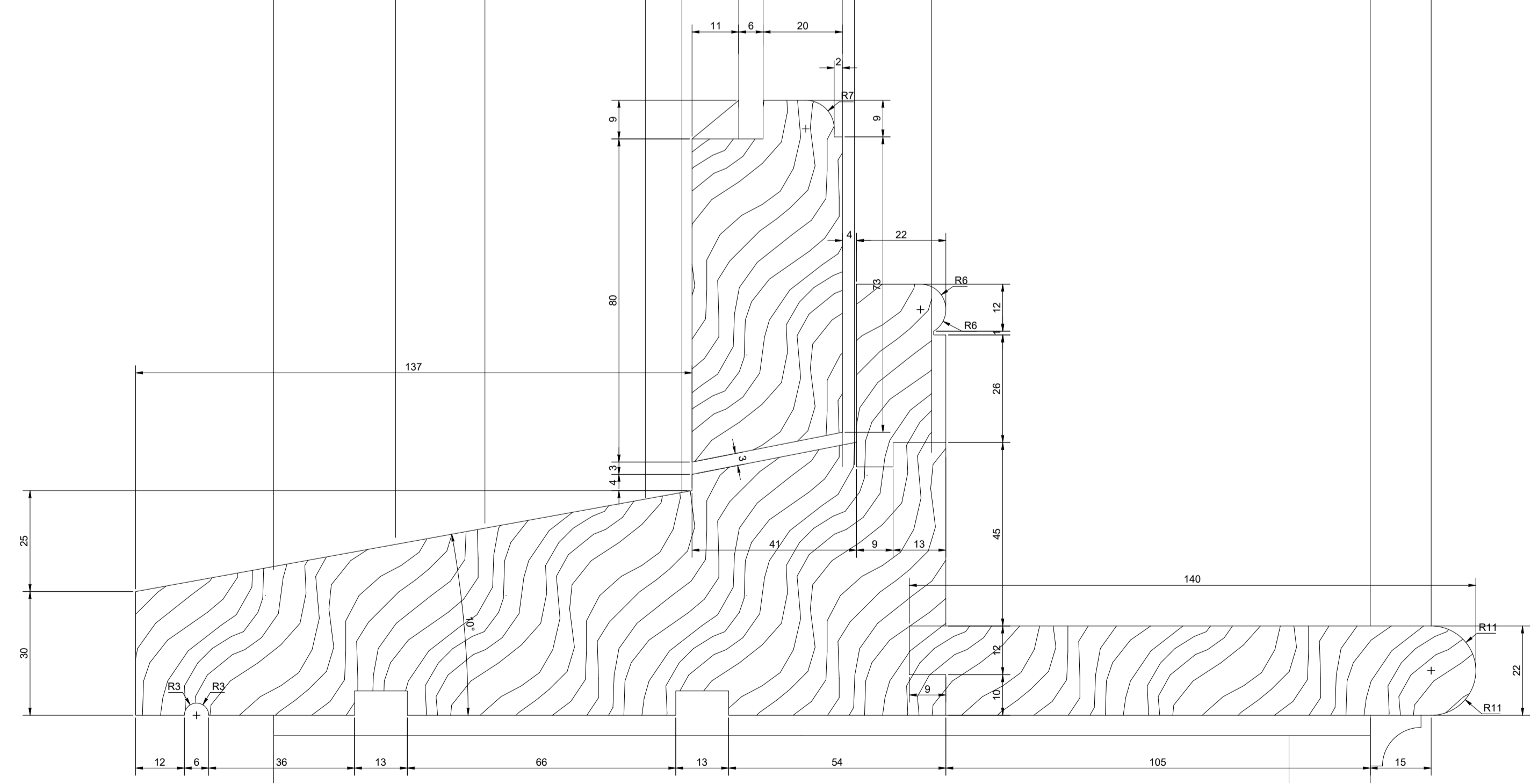
HORIZONTAL SECTION DETAILS (full size)



DETAIL A1

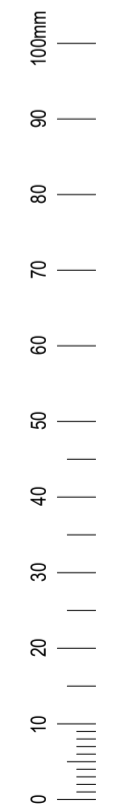


DETAIL A2



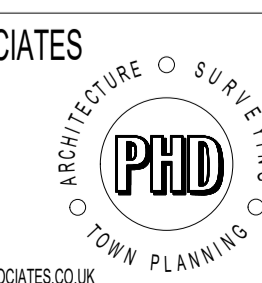
DETAIL A3

VERTICAL SECTION DETAILS (full size)



REV	BRIEF DETAILS	DATE
-	initial issued	

P.H.D. ASSOCIATES
BRAEMAR HOUSE
WATER LANE
STANSTED, ESSEX
CM24 8BJ
TEL: 01279 817342
EMAIL: INFO@PHDASSOCIATES.CO.UK



Project
Oxford House Hostel,
Tavistock Place, London
WC1H 9RE
Drawing
New sash window W-1/07 & 08
Joinery Details

Date
18/08/2022
Drawn By
VM/ADC/SHD
Scale
1:1@A1
Drawing Number
2105/BC/J/102