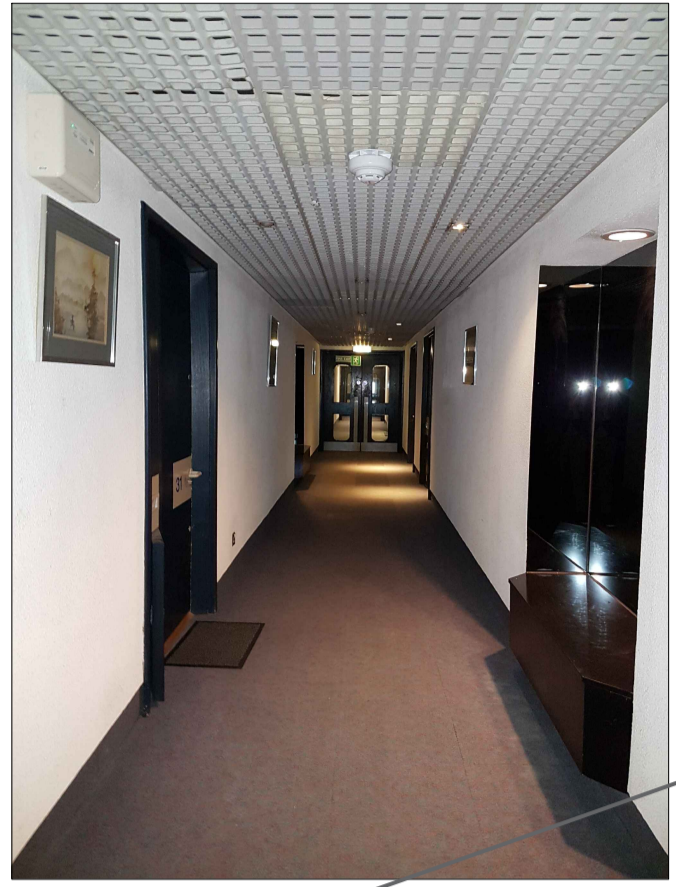
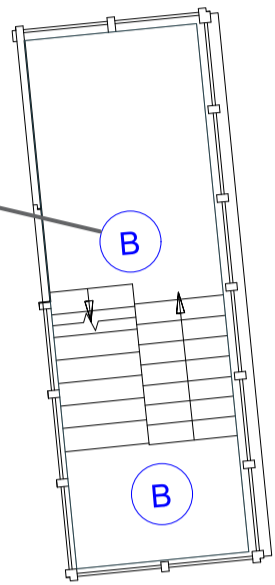


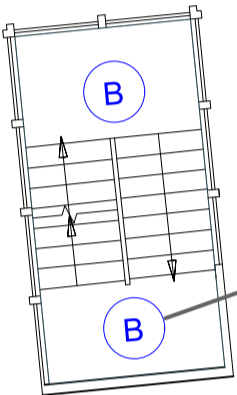
Existing Light Fittings Type (A)
Basic spotlight-style fittings located on existing suspended ceilings throughout corridor and lift lobby.



Existing Light Fittings Type (B)
Basic 2D circular bulkhead light fittings surface mounted to ceilings throughout staircases.



6th & 8th Floor Level



6th & 8th Floor Level

22.7.2022: Additional notes added.
24.2.2022: Revision 1.

CONTRACTOR

Strongbow Consulting Engineers

SITE ADDRESS

Centre Point House
15a St. Giles High Street
London, WC2H 8LW

PROJECT NAME

Lighting & Small Power - Existing Communal Lights
Centre Point House

DRAWN BY

IFPL

CHECKED BY

T. BELL

DRAWING NAME

Seventh Floor

DATE

7.2022

SCALE

1:100@A1

DRAWING NUMBER

SB-CPH-E-7-EL