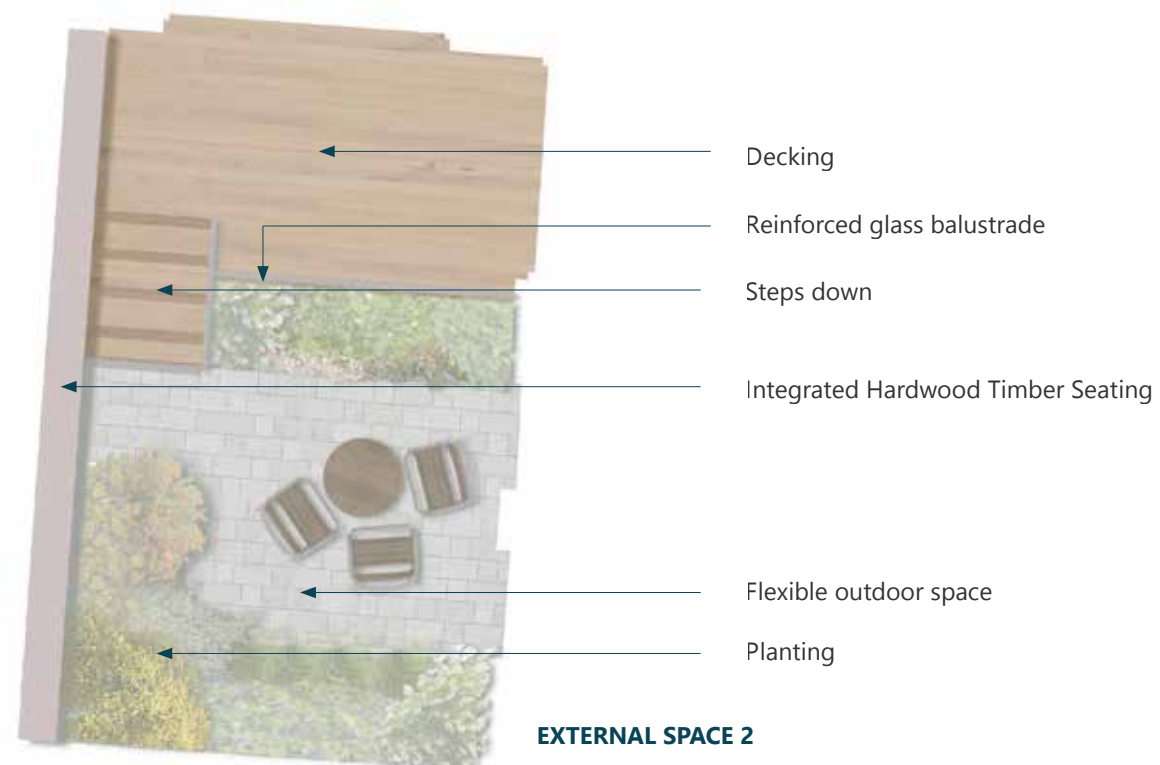
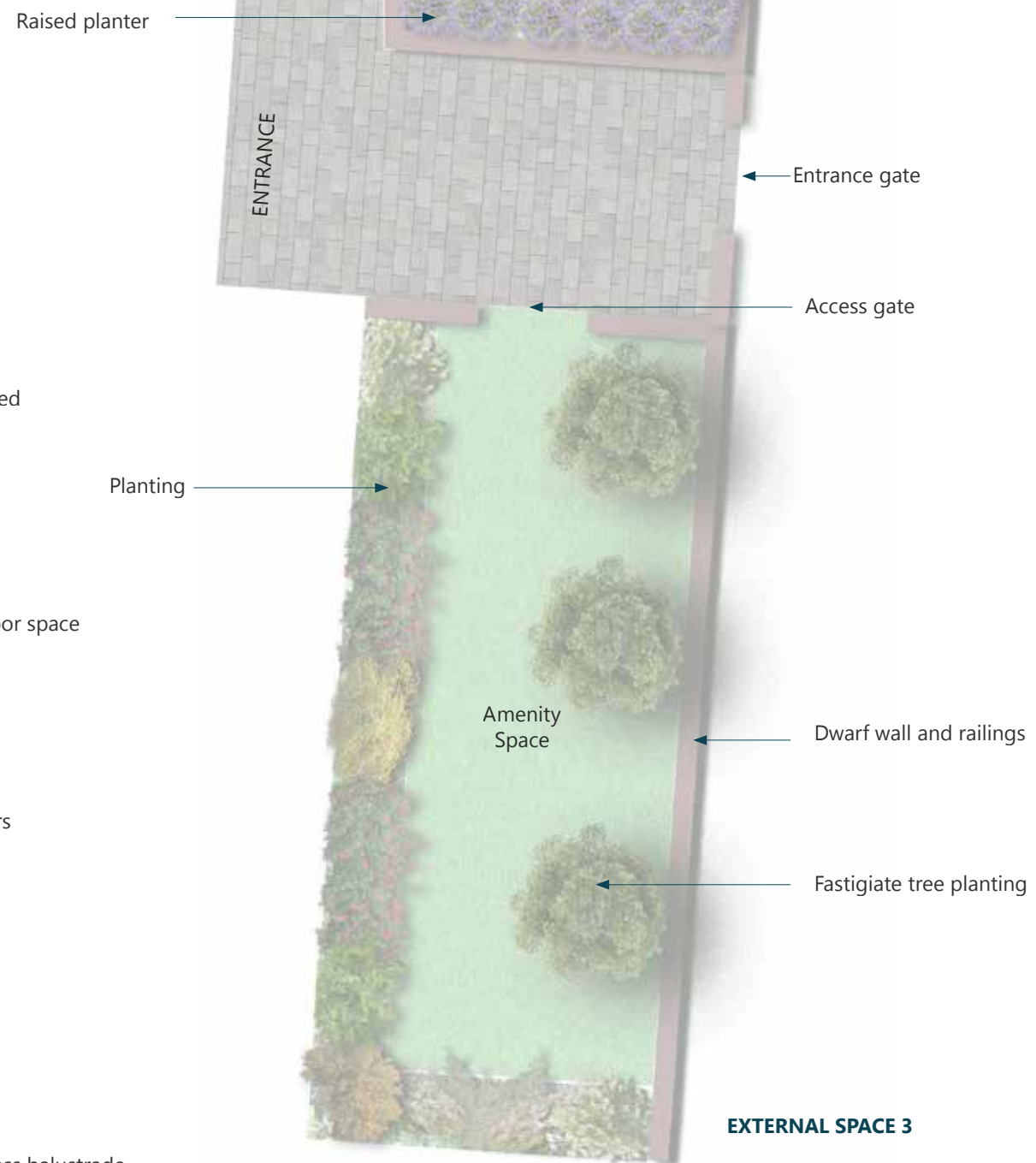


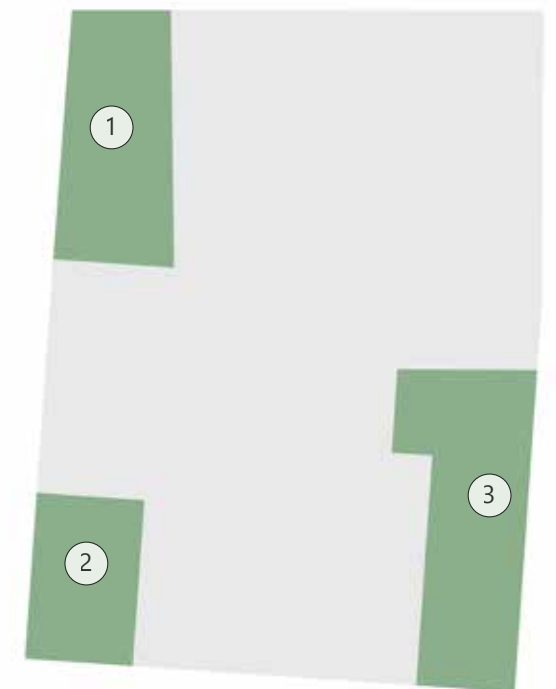
EXTERNAL SPACE 1



EXTERNAL SPACE 2



EXTERNAL SPACE 3



KEY PLAN

Concept

The ground floor dwelling units H.01 and G.01 have each been provided with an external private garden area.

The gardens are directly accessible from the units and therefore provides the opportunity for an external living environment.

A residents amenity space is provided adjacent to the main entrance and fronting the Kilburn Vale Estate. The amenity space is laid to lawn, with defensive shrub planting protecting ground floor windows and 3no. fastigate flowering cherry trees.

BIRD IN THE HAND Ground Floor Externals Spaces Concept Plan

SUN

Heuchera



Lavendula



Libertia



Nepeta



Erysimum



SEMI-SHADE

Geranium



Pesicaria



Astrantia



Milium



Tiarella



SHADE

Alchemilla



Geranium



Polypodium



Mahonia



Sarcococca



PLANTING PALETTE

Planting Philosophy

Planting softens built form, humanises space, mitigates the microclimate and provides a seasonal sense of place.

Ground Floor Gardens

The vegetation is proposed to be planted within a stepped planting bed to create additional form and interest. The gardens will be enclosed by the existing boundaries, made good where necessary. Low level planters with shrubs and herbaceous planting are proposed, with taller vertical elements where space allows.

Given the intimate size of the gardens, the aspect and the boundary features the planting proposals will be designed to reflect the micro climates within each separate space.

BIRD IN THE HAND
Planting Palette

STUDIO
413

landscape
architecture

PV Seed Mix

The Bauder Flora 3 seed mix has all the components required to improve the germination and the successful establishment of vegetation for a variety of rooftop conditions: light and shade; exposed and sheltered.

Species are selected that do not exceed 40cm in height to avoid problems with shading of solar panels. Shade tolerant ground cover plants are specified that will occupy the semi-shade microclimates under the panels.

Key Specification Features

- Very broad spectrum of species ensuring a broad diversity of created habitats.
- Lengthy flowering season – April to October.
- High number of annuals to give excellent colour in the first year.
- Shade tolerant species to give coverage in less sunny locations.
- Low growing plants with good wind tolerance suited to exposed locations.

Mix Details - UK Native British Provenance Seed Mix

- 49 Species
 - 31 species of which eight are annuals
 - 8 Grasses/Sedge
 - 2 Sedum species
- 35 of the wildflowers are classed as RHS Perfect for Pollinators
- 12 Butterfly and moth larval food plants.
- Shade tolerant species.
- Low growing to medium height.
- Mix percentages; 65% perennial wildflowers, 20% annuals 15% grasses.



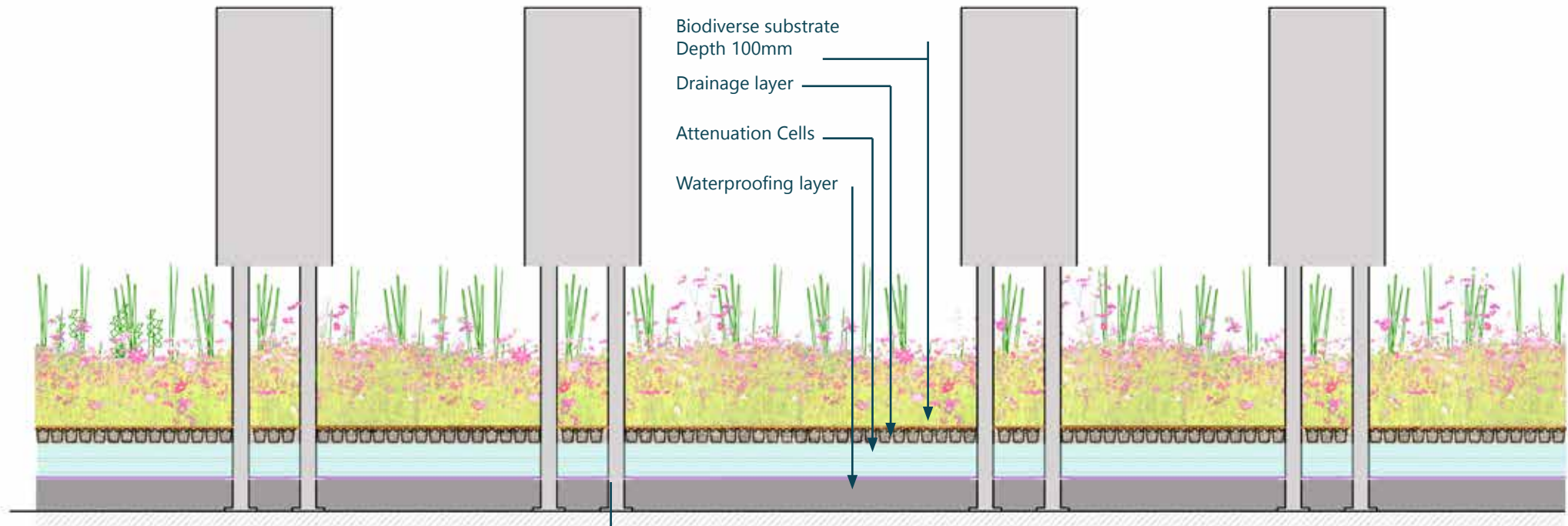
Roof Vegetation



Growing Medium & irrigation

Extensive roof growing medium to consist of Bauder Biodiverse Substrate (or similar) min. 100mm deep laid over filter fleece.

Irrigation to consist of Perma-drip Pro drip line irrigation system (or similar) with anti-syphon design, fed from grey water recycled source, to engineers details.



Typical Section ASHP & Green/Blue Roof

Supporting brackets to M&E Engineers details and fixed to roof structure to specialist roofing supplier design

Irrigation to consist of Perma-drip Pro drip line irrigation system (or similar) with anti-syphon design, fed from grey water recycled source, to engineers details.

BIRD IN THE HAND
Green/Blue Roof