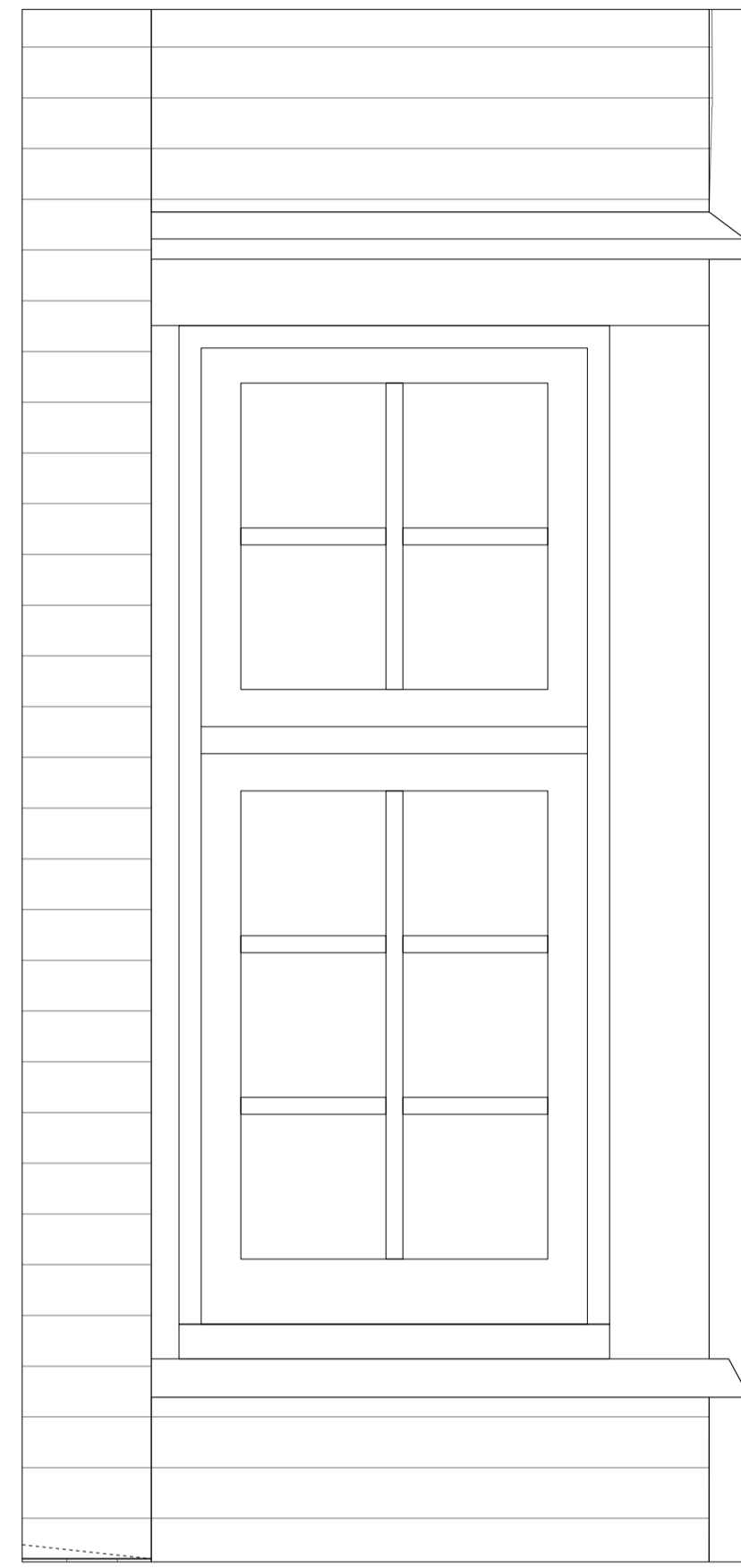
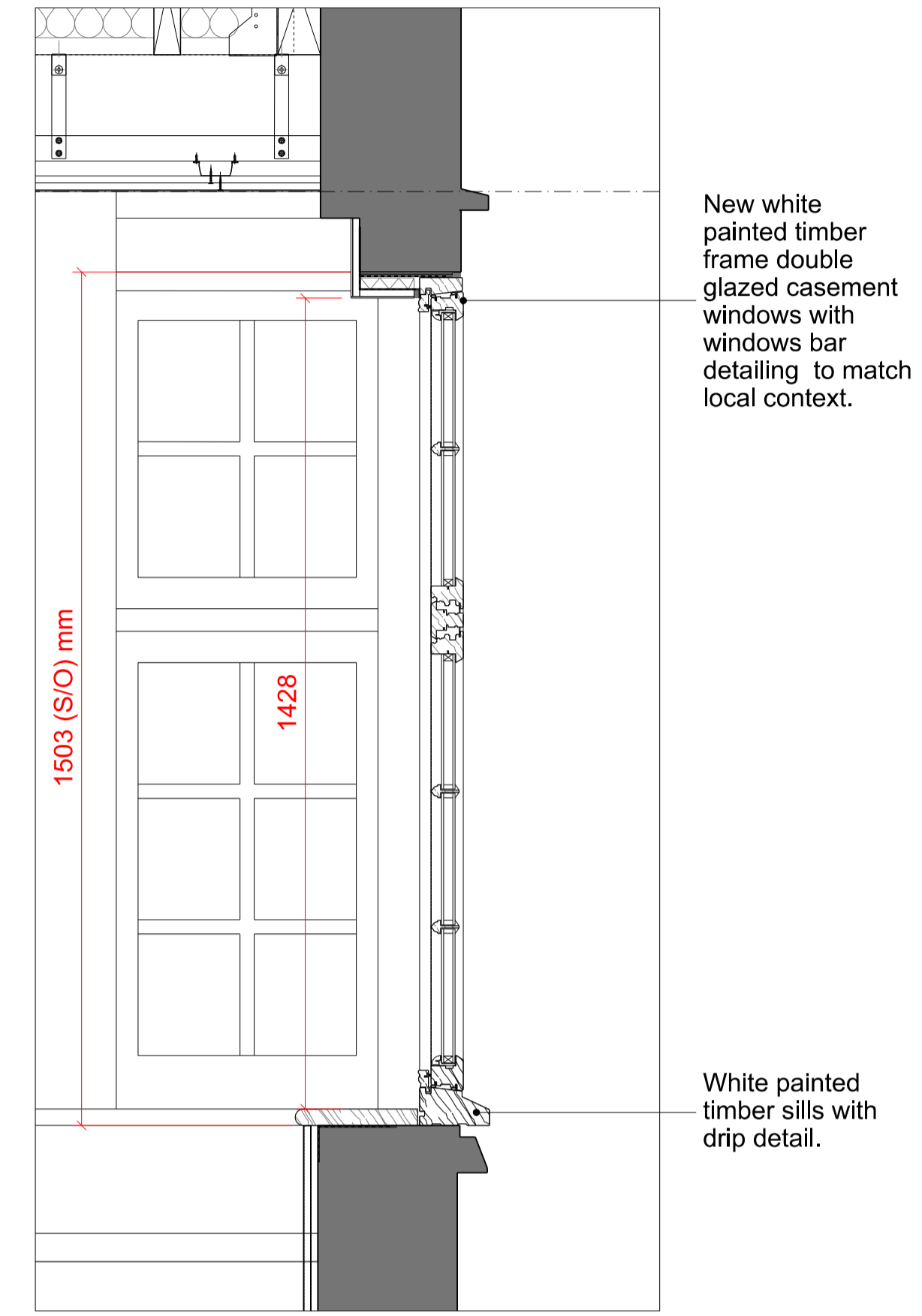


02 - Typical Casement Window Elevation  
1:10



03 - Typical Casement Window Section  
1:10



04 - Typical Casement Window Section  
1:10

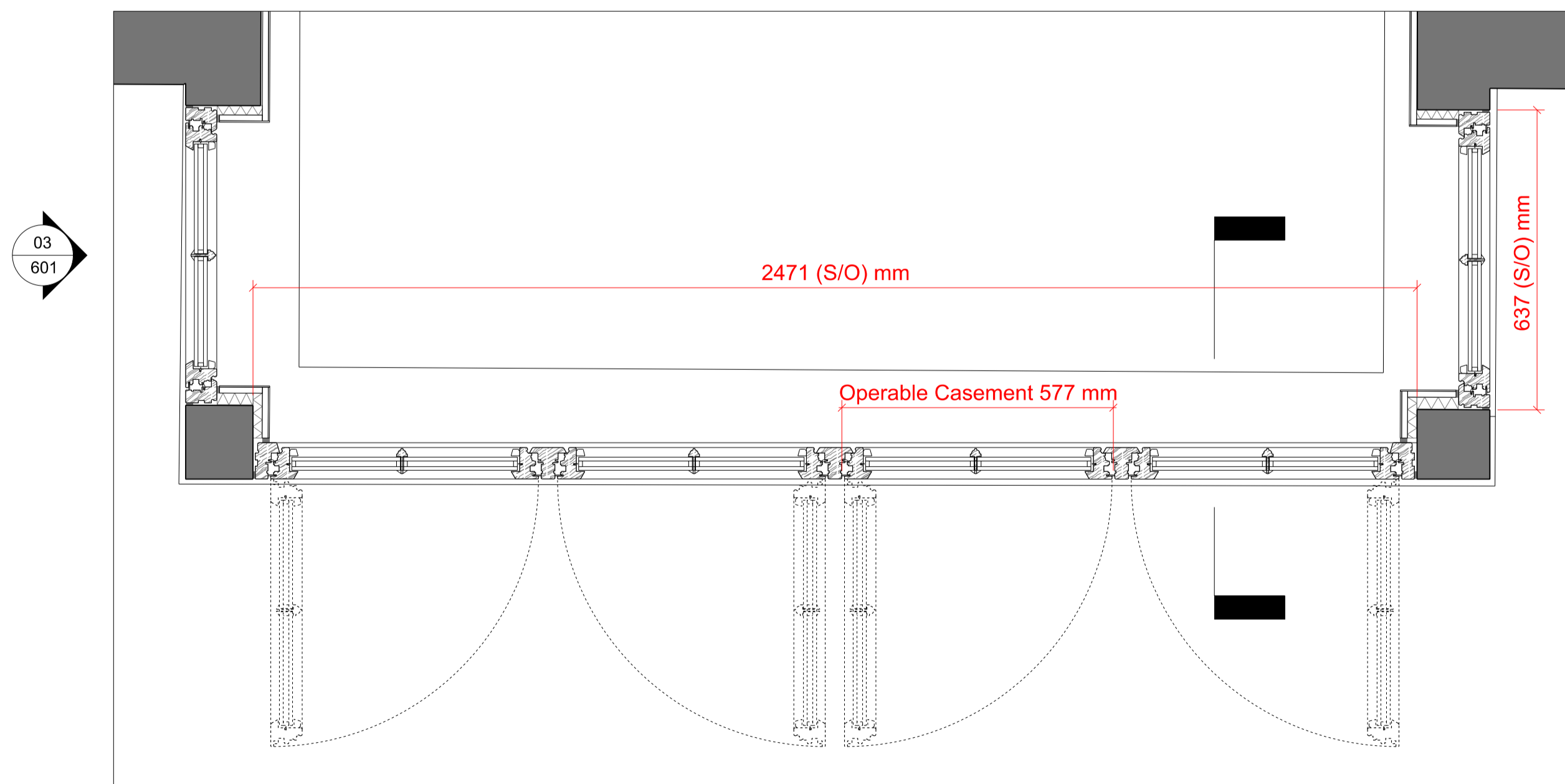
New white painted timber frame double glazed casement windows with windows bar detailing to match local context.

White painted timber sills with drip detail.

Drawing Key

- - - Site Boundary
- Existing / Retained
- Proposed Structure

**\*\*NB\*\*** Please liaise with architect if unclear regarding any aspect of the proposed works.



01 - Typical Casement Window Plan  
1:10

Proposed Windows - **W.G.03, W.G.04, W.G.05, W.G.07, W.1.03, W.1.06 & W.1.07**

Specification: Double glazed casement window

Refer to drawings 20\_300, 20\_310, 30\_320 & 20\_330 for window reference tags

Rev	Date	Reason For Issue	Chk
A	31/08/22	Planning Condition Discharge	ED

Project  
**76 Lawn Road**  
**NW3 2XB**

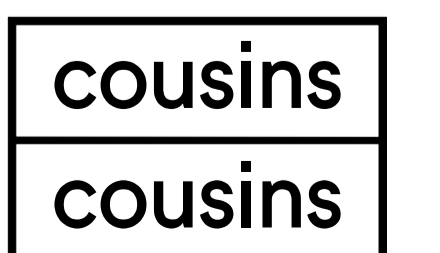
Client  
**Private**

Title  
**Typical Side Hung Casement Window with Fixed Panel**

Status  
**PLANNING**

Project Number	Date	Scale @ ISO A1
20007	31/08/2022	1:10

Revision	Drawn By	Approved By	Drawing Number
A	CM	ED	31_601



Bedford House  
 125-133 Camden High Street  
 London  
 NW1 7JR

Info@cousinsandcousins.com  
 www.cousinsandcousins.com