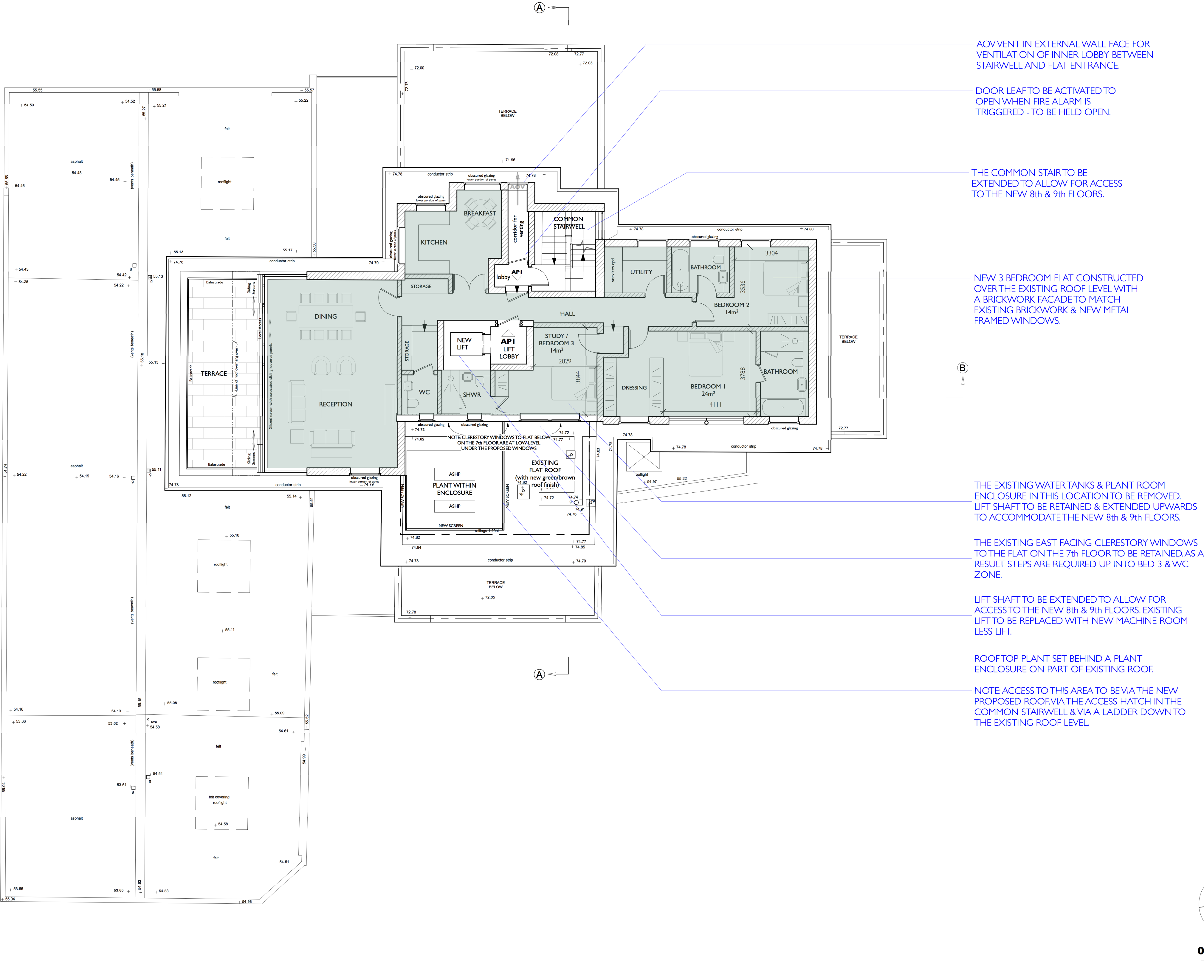


PROPOSED EIGHTH FLOOR PLAN

- Apartment I
- New Walls
- New Terrace



Unit 25, BASEPOINT
EVESHAM
WORCESTERSHIRE
WR11 1GP
t : 020 7328 2576
Email: info@hubarchitects.co.uk

All dimensions are to be checked on site before commencement of works.
All sizes and dimensions to any structural elements are indicative only. See structural engineer's drawings for actual sizes/dimensions.
Sizes of and dimensions to any service elements are indicative only. See service engineer's drawings for actual sizes/dimensions.
This drawing to be read in conjunction with all relevant Architect's drawings, specifications and other consultants' information.

Rev.	Date	Description
A	2201-26	General drawing update.
B	2203-15	General drawing update, lobby & vents added.
C	2204-19	General drawing update, lobby vent to external wall.
D	2204-26	General drawing update to notes.
E	2205-04	General drawing update, plant area.
F	2208-10	General drawing update, plant area.
G	2208-11	General drawing update.

PERMITTED DEVELOPMENT	
Project: 95 Avenue Road, London, NW8 6HY	Drawing: Proposed Eighth Floor Plan
Scale: 1:100 @ A1 & 1:200 @ A3	DWG: 1289 - PD - 112
Date: Jan 2021	Revision: G